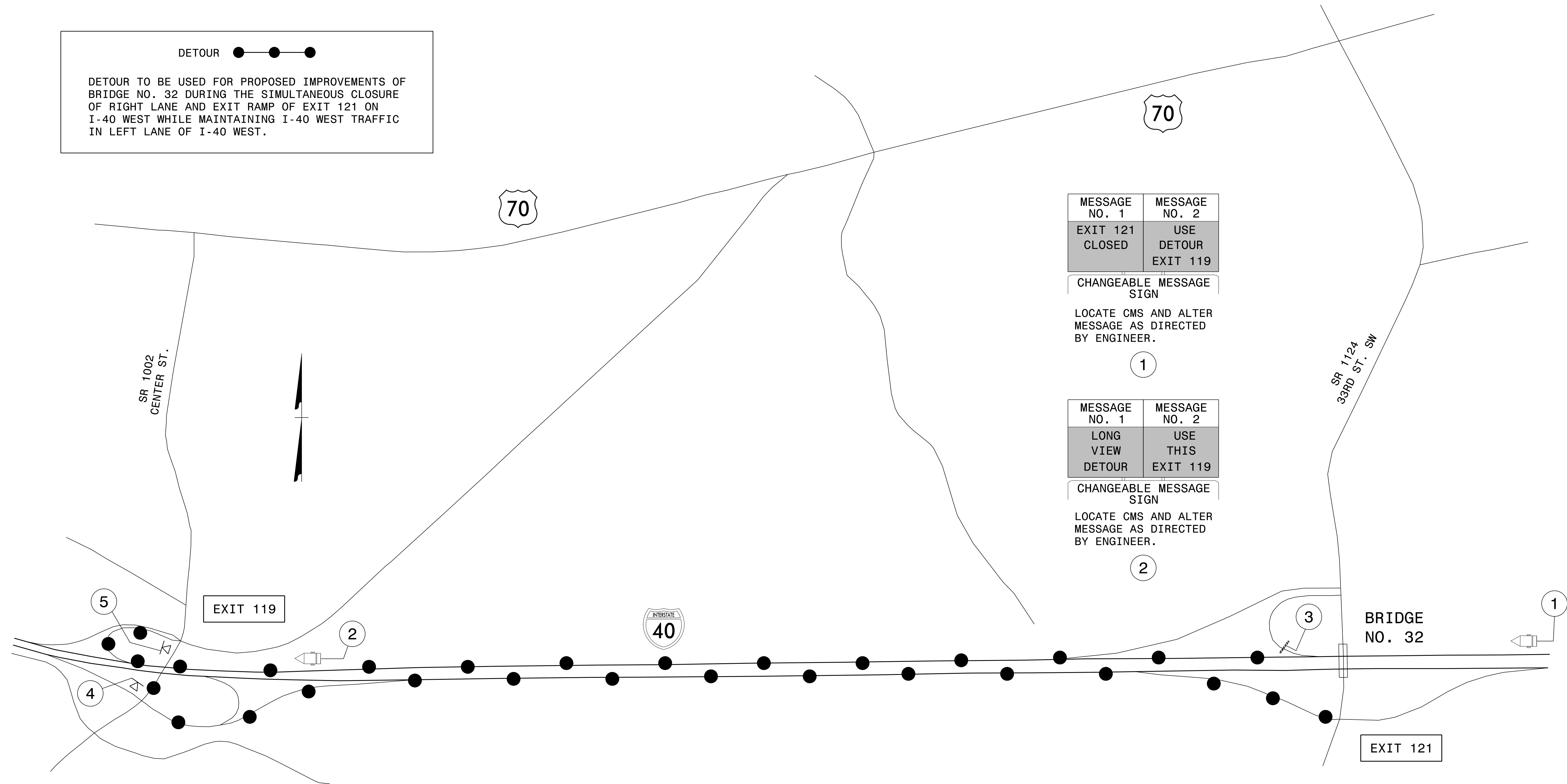


DETOUR ●—●—●

DETOUR TO BE USED FOR PROPOSED IMPROVEMENTS OF BRIDGE NO. 32 DURING THE SIMULTANEOUS CLOSURE OF RIGHT LANE AND EXIT RAMP OF EXIT 121 ON I-40 WEST WHILE MAINTAINING I-40 WEST TRAFFIC IN LEFT LANE OF I-40 WEST.



MESSAGE NO. 1	MESSAGE NO. 2
EXIT 121 CLOSED	USE DETOUR EXIT 119

CHANGEABLE MESSAGE SIGN

LOCATE CMS AND ALTER MESSAGE AS DIRECTED BY ENGINEER.

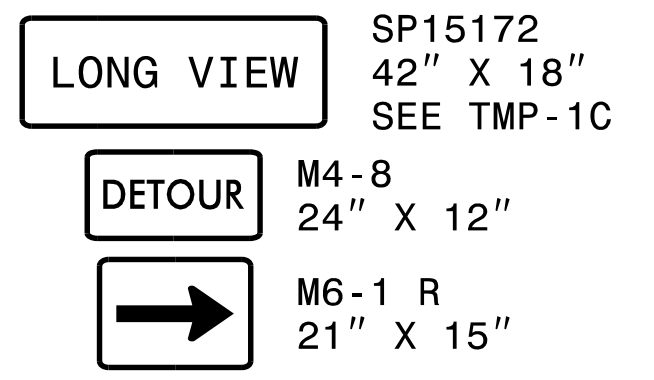
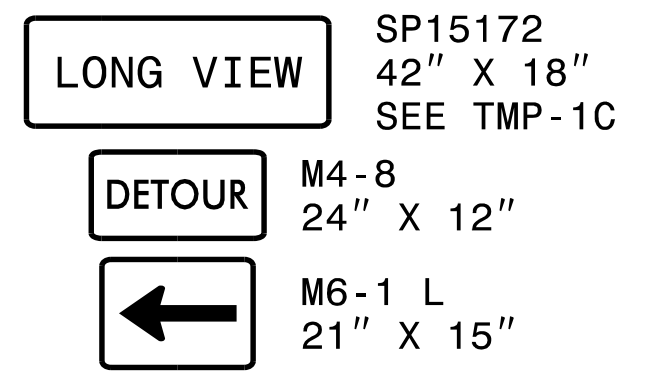
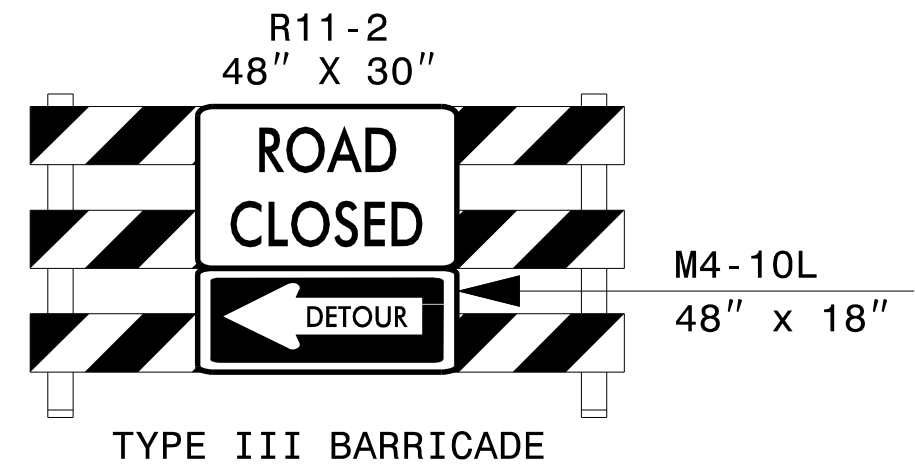
1

MESSAGE NO. 1	MESSAGE NO. 2
LONG VIEW DETOUR	USE THIS EXIT 119

CHANGEABLE MESSAGE SIGN

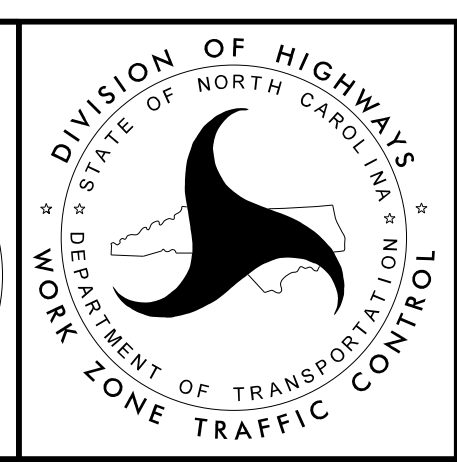
LOCATE CMS AND ALTER MESSAGE AS DIRECTED BY ENGINEER.

2



APPROVED: *Lori Stouchka*
DATE: 8/17/2015

PROFESSIONAL SEAL
034437
ENGINEER
LORI D. STOUCHKA



BRIDGE NO. 32
DETOUR FOR CLOSURE
OF I-40 W EXIT RAMP
AT EXIT 121 TO
SR 1124 (33RD ST SW)

8/17/2015 P:\TIP\Projects-BP\BP5500E\TrafficControl\TCP\BP-5500E_TC_TMP-03\Bridge 32 Detour.dgn User:ldstouchka