

MESSAGE NO. 1	MESSAGE NO. 2
US 321 S USE EXIT 44	US 321 S THIS EXIT

CHANGEABLE MESSAGE SIGN
LOCATE CMS AND ALTER MESSAGE AS DIRECTED BY ENGINEER.

1

MESSAGE NO. 1	MESSAGE NO. 2
US 321 S DETOUR	KEEP RIGHT

CHANGEABLE MESSAGE SIGN
LOCATE CMS AND ALTER MESSAGE AS DIRECTED BY ENGINEER.

2

MESSAGE NO. 1	MESSAGE NO. 2
I 40 E DETOUR	KEEP RIGHT

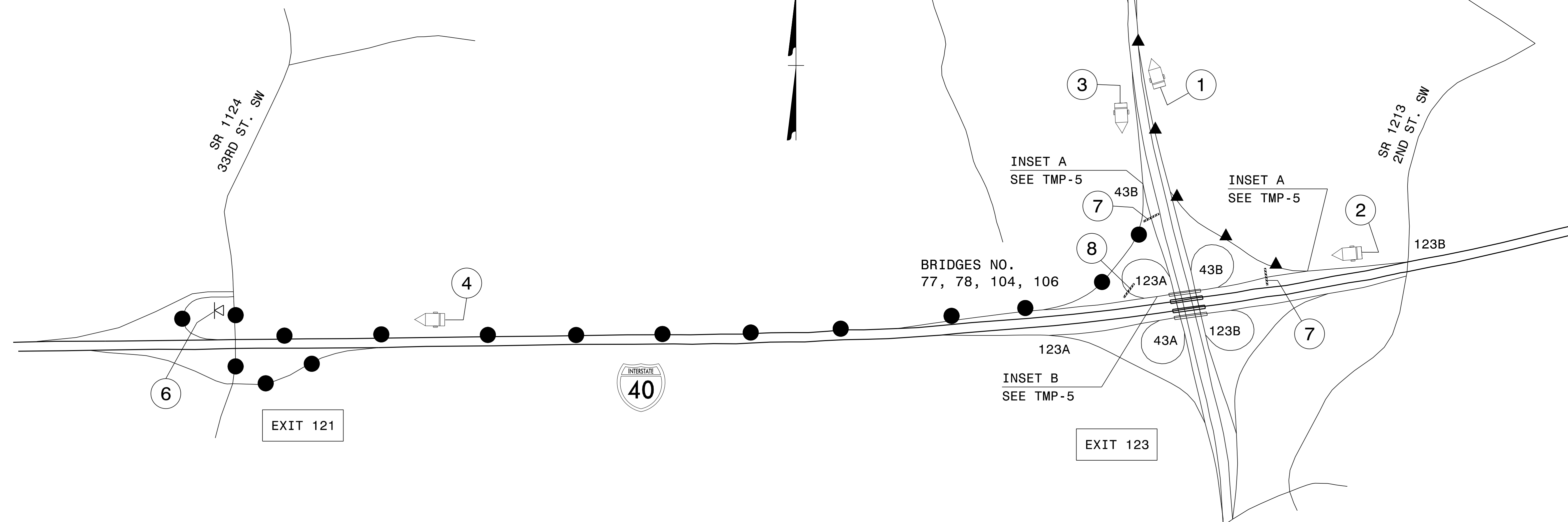
CHANGEABLE MESSAGE SIGN
LOCATE CMS AND ALTER MESSAGE AS DIRECTED BY ENGINEER.

3

MESSAGE NO. 1	MESSAGE NO. 2
I 40 E USE EXIT 121	I 40 E THIS EXIT

CHANGEABLE MESSAGE SIGN
LOCATE CMS AND ALTER MESSAGE AS DIRECTED BY ENGINEER.

4

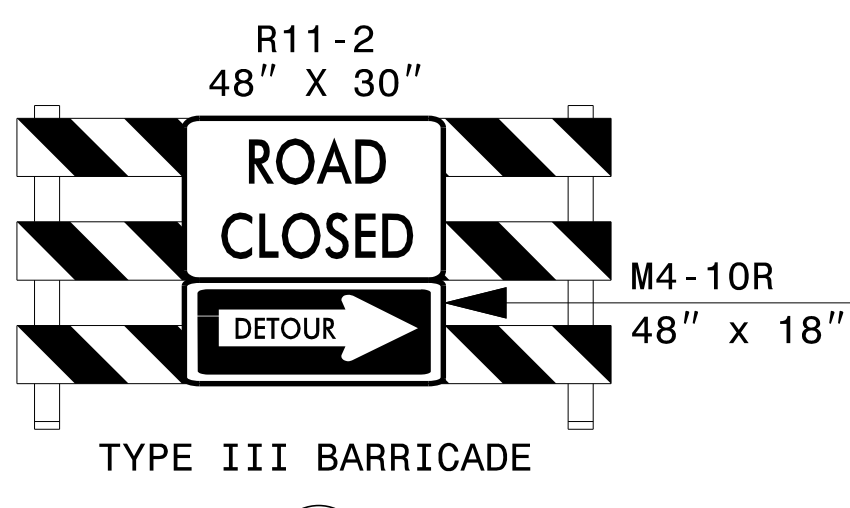


DETOUR	M4-8 24" X 12"
SOUTH	M3-3 24" X 12"
321	M1-4
←	M6-1 L 21" X 15"

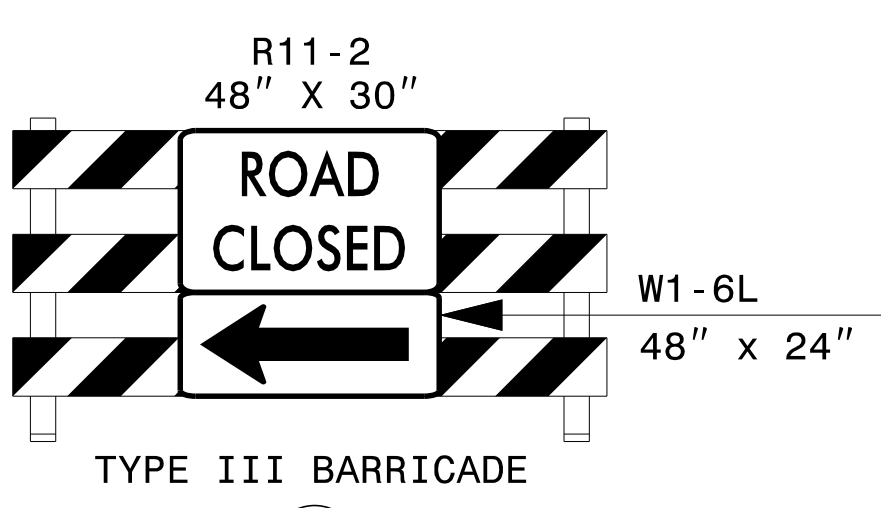
5

DETOUR	M4-8 24" X 12"
EAST	M3-2 24" X 12"
40	M1-1
→	M6-1 R 21" X 15"

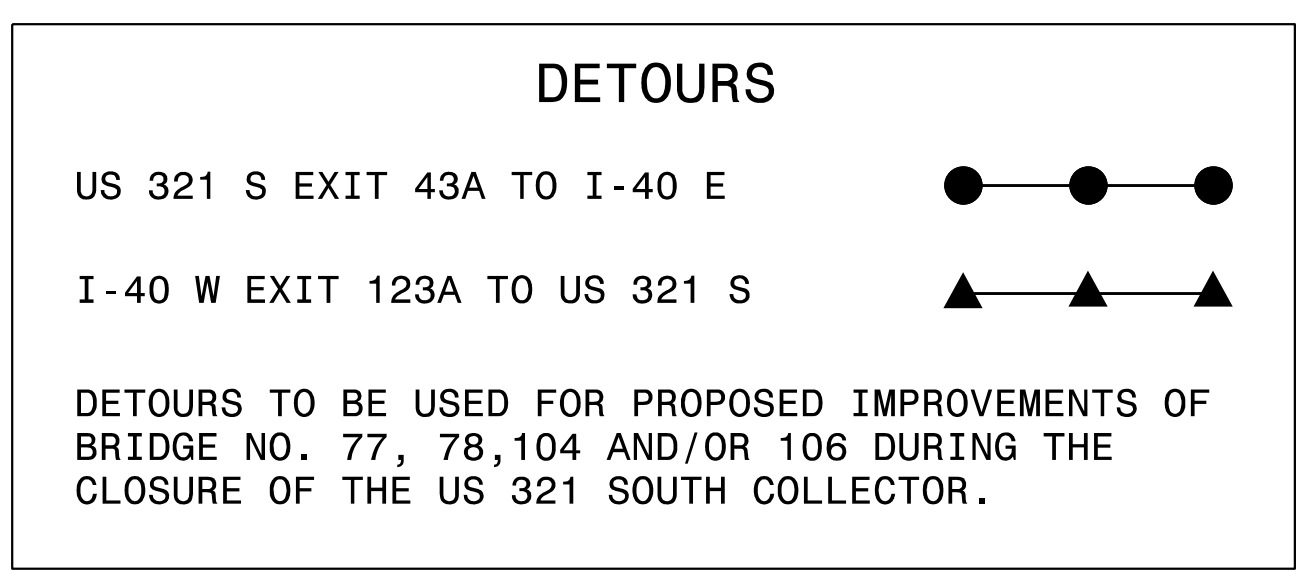
6



7

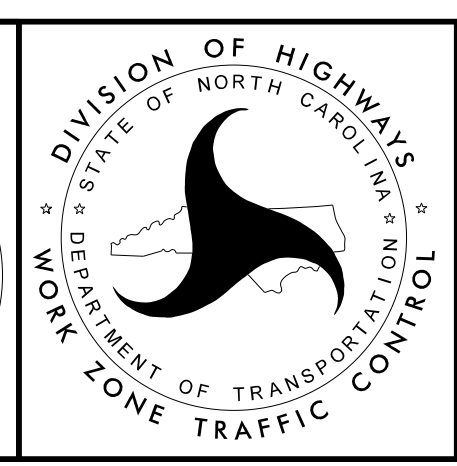


8



APPROVED: *Lori Stouchka*
DATE: 8/17/2015

PROFESSIONAL SEAL
034437
ENGINEER
LORI D. STOUCHKA



BRIDGES NO. 77, 78,
104 & 106
DETOURS OF US 321 S
EXIT 43A & I-40 W
EXIT 123A

8/17/2015 P:\TIP\Projects-BP\BP5500D\TrafficControl\TCP\BP-5500D_TC_TMP-04_bridg 77 detour US 321 S.dgn User:idsfouchko