

MESSAGE NO. 1	MESSAGE NO. 2
US 321 N USE EXIT 42	US 321 N THIS EXIT

CHANGEABLE MESSAGE SIGN
LOCATE CMS AND ALTER MESSAGE AS DIRECTED BY ENGINEER.

1

MESSAGE NO. 1	MESSAGE NO. 2
US 321 N DETOUR	KEEP RIGHT

CHANGEABLE MESSAGE SIGN
LOCATE CMS AND ALTER MESSAGE AS DIRECTED BY ENGINEER.

2

MESSAGE NO. 1	MESSAGE NO. 2
I 40 W DETOUR	KEEP RIGHT

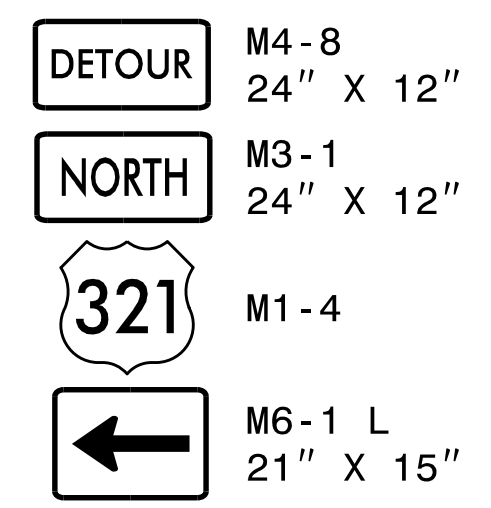
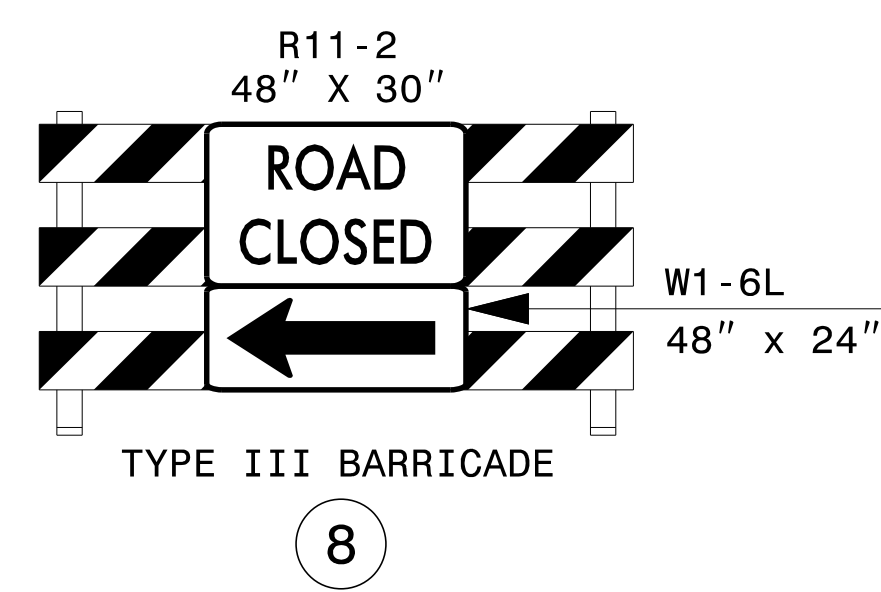
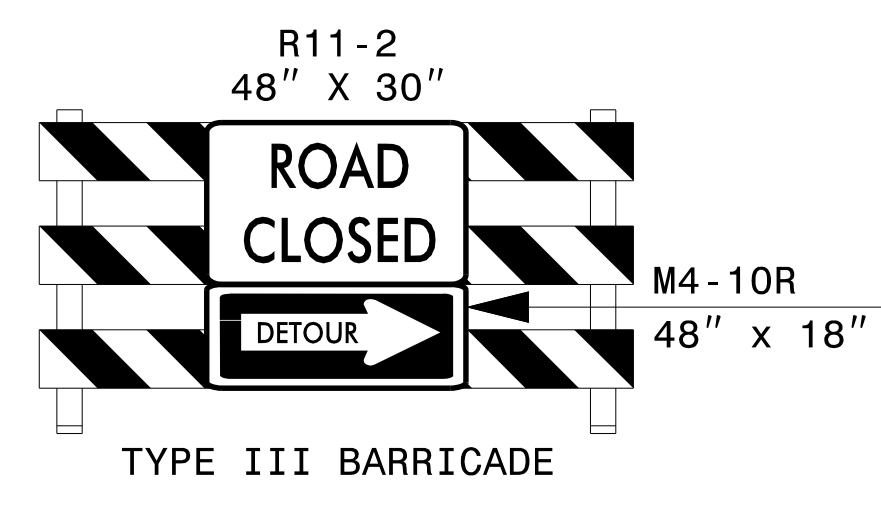
CHANGEABLE MESSAGE SIGN
LOCATE CMS AND ALTER MESSAGE AS DIRECTED BY ENGINEER.

3

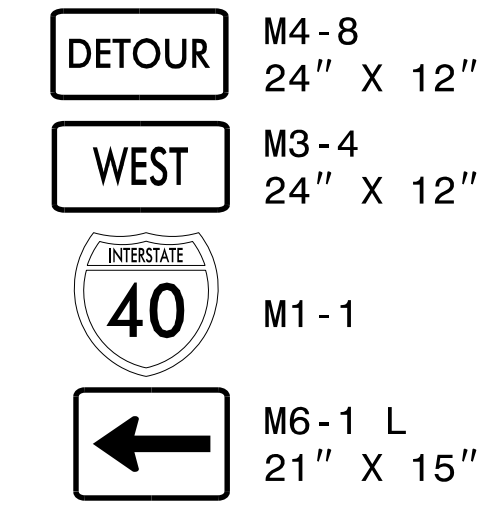
MESSAGE NO. 1	MESSAGE NO. 2
I 40 W USE EXIT 125	I 40 W THIS EXIT

CHANGEABLE MESSAGE SIGN
LOCATE CMS AND ALTER MESSAGE AS DIRECTED BY ENGINEER.

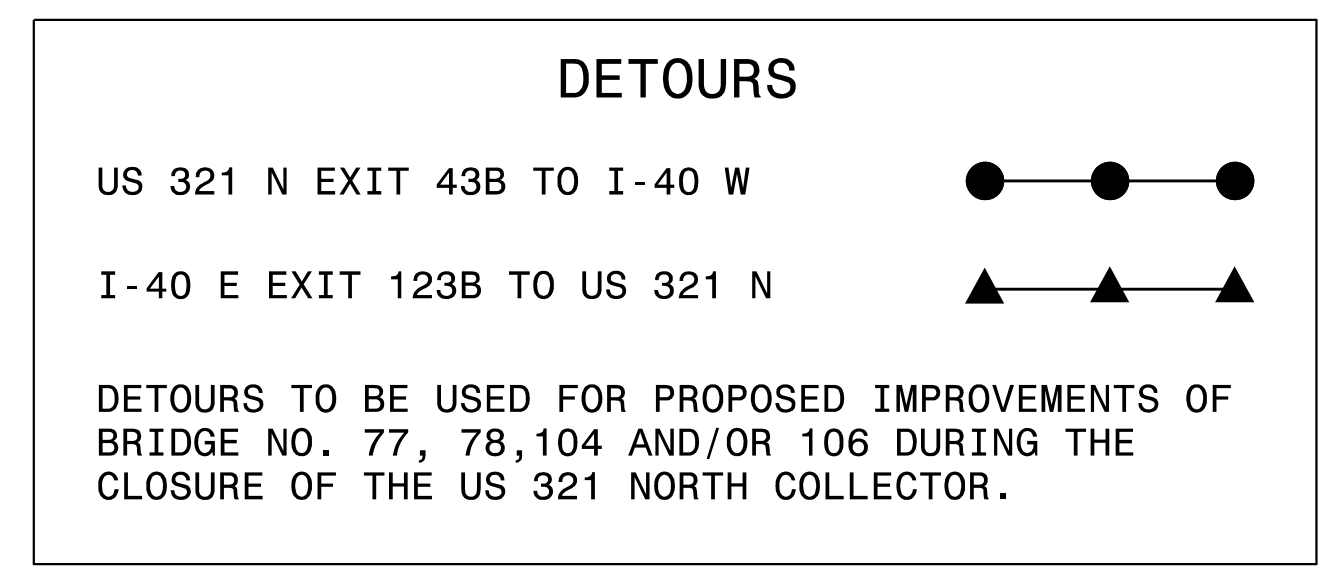
4



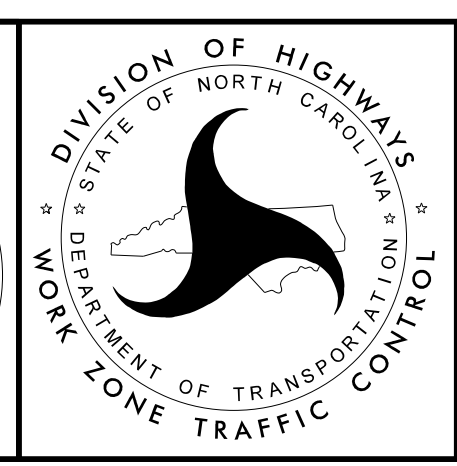
5



6



APPROVED: *Lori Stouchka*
DATE: 8/17/2015



**BRIDGES NO. 77, 78,
104 & 106
DETOURS OF US 321 N
EXIT 43B & I-40 E
EXIT 123B**

8/17/2015 P:\TIP\Projects-BP\BP5500D\TrafficControl\TCP\BP-5500D_TC_TMP-03_bridg 77 detour US 321N.dgn User:ldstouchko