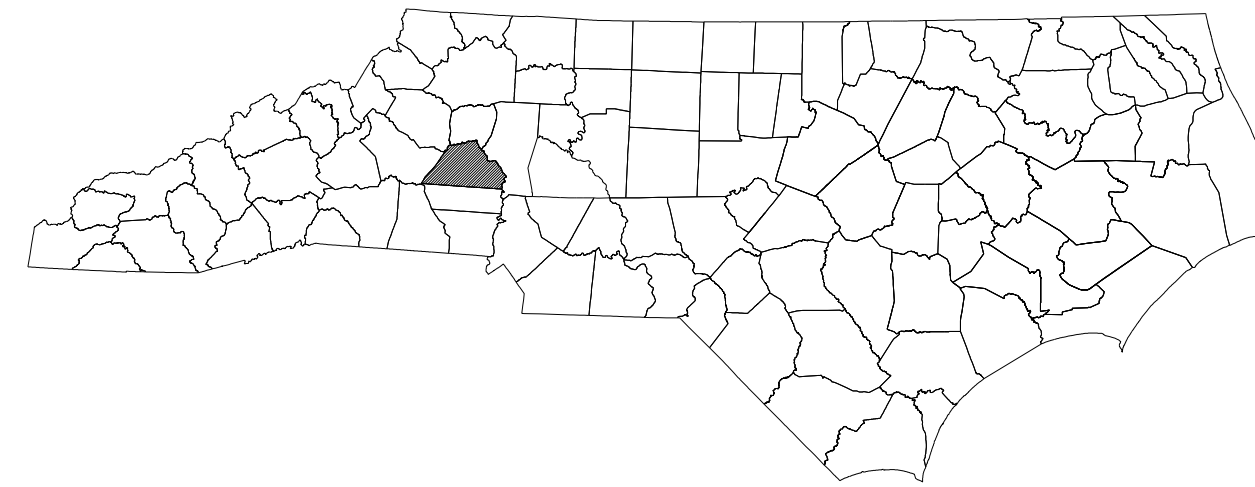


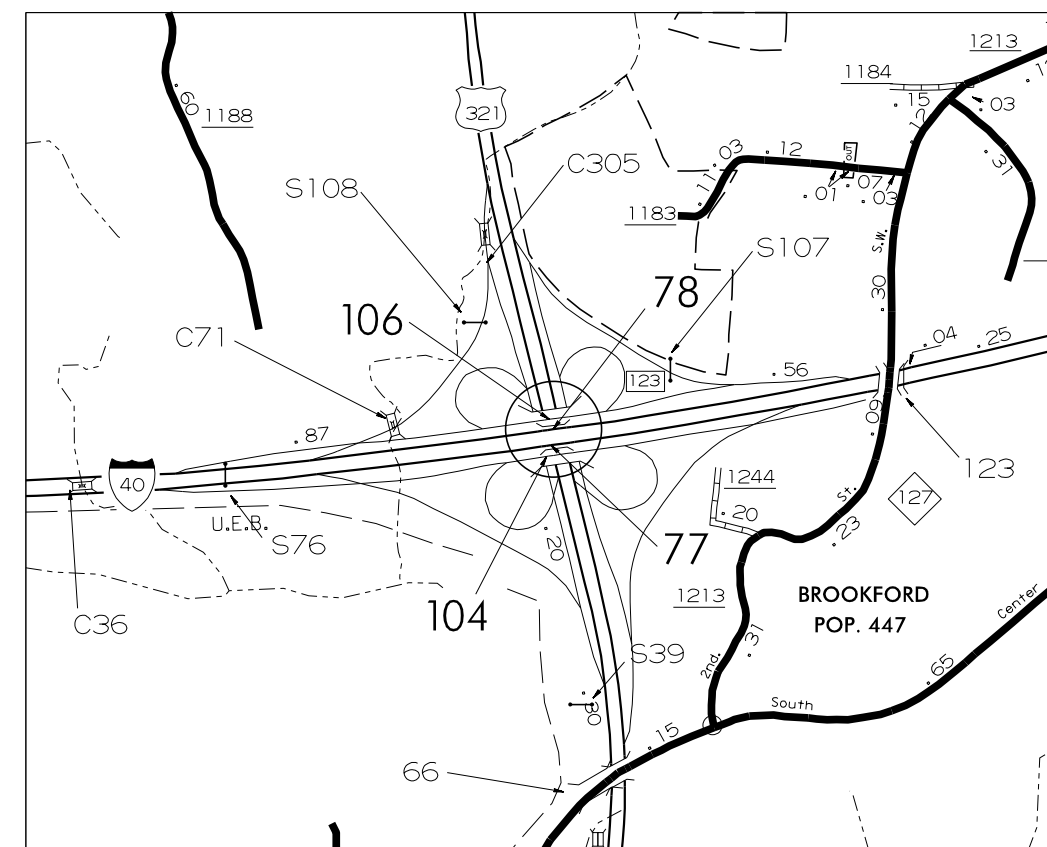
STATE OF NORTH CAROLINA
DIVISION OF HIGHWAYS

TRANSPORTATION MANAGEMENT PLAN

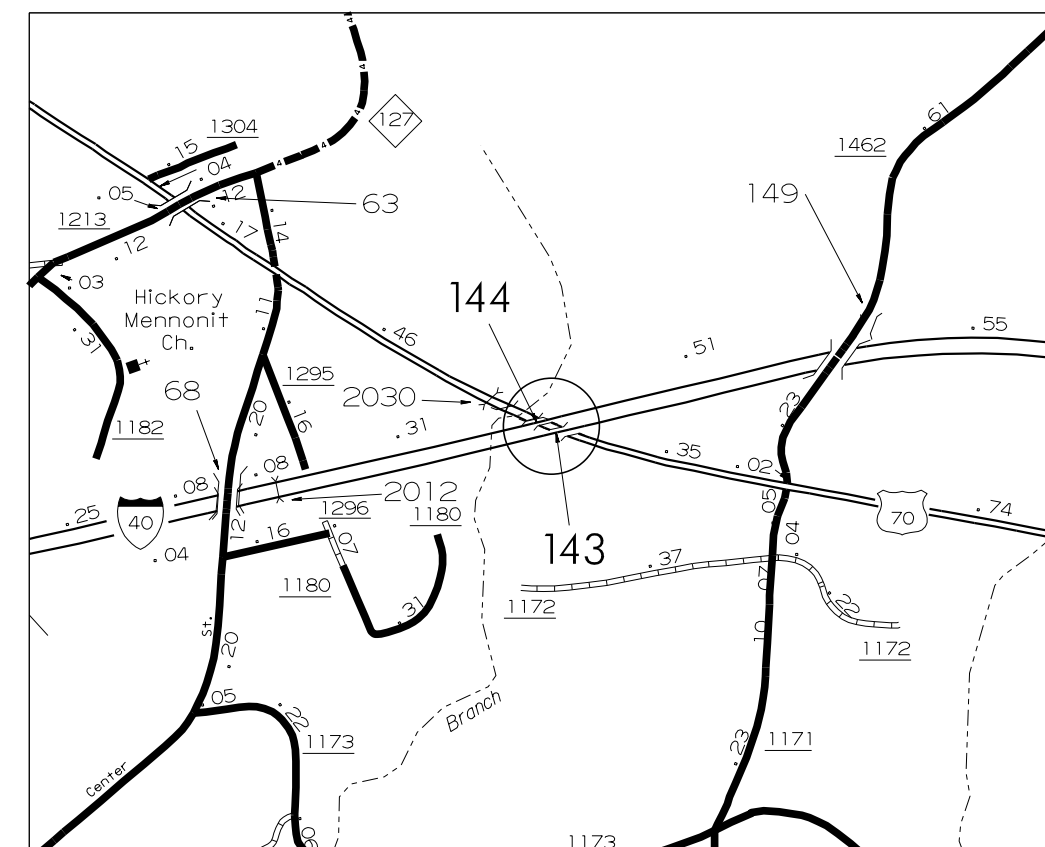
CATAWBA COUNTY



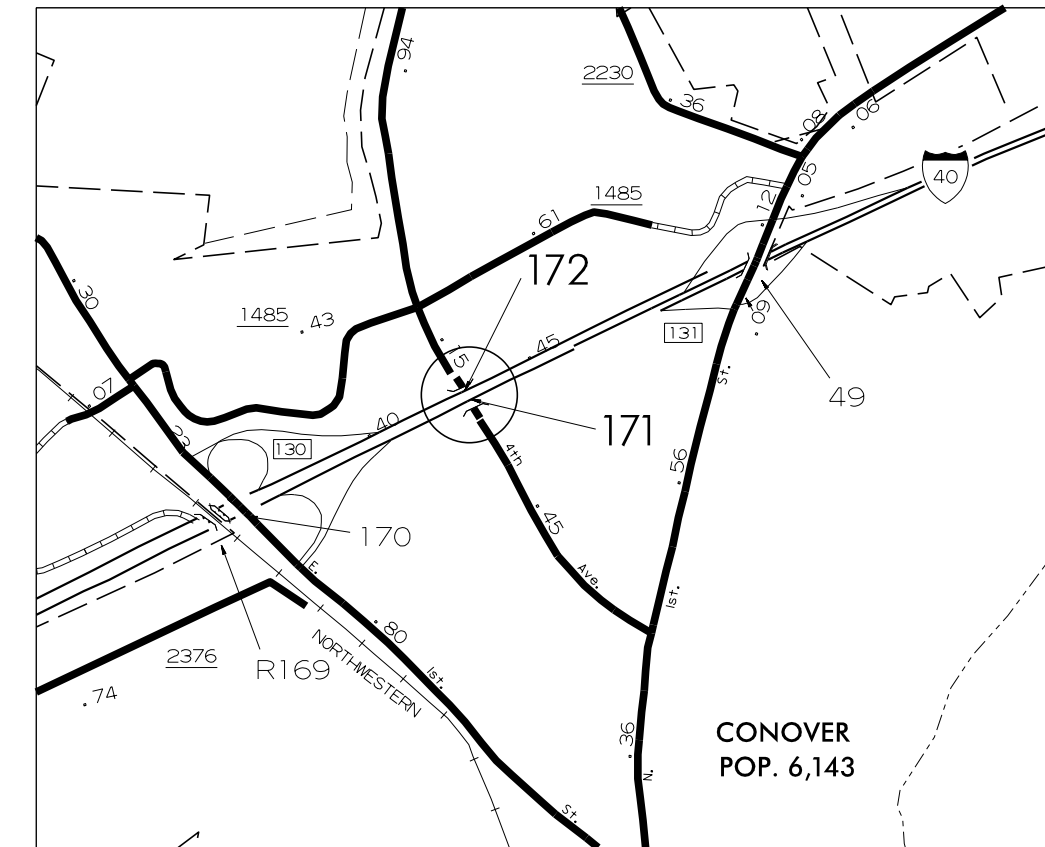
LOCATION: CATAWBA COUNTY:
BRIDGE #77 ON INTERSTATE 40 EAST BOUND OVER US 321
BRIDGE #78 ON INTERSTATE 40 WEST BOUND OVER US 321
BRIDGE #104 ON INTERSTATE 40 EAST BOUND COLLECTOR OVER US 321
BRIDGE #106 ON INTERSTATE 40 WEST BOUND COLLECTOR OVER US 321
BRIDGE #143 ON INTERSTATE 40 EAST BOUND OVER US 70
BRIDGE #144 ON INTERSTATE 40 WEST BOUND OVER US 70
BRIDGE #171 ON INTERSTATE 40 EAST BOUND OVER SR 1484 (COUNTY HOME ROAD)
BRIDGE #172 ON INTERSTATE 40 WEST BOUND OVER SR 1484 (COUNTY HOME ROAD)



VICINITY MAP - CATAWBA CO.



VICINITY MAP - CATAWBA CO.



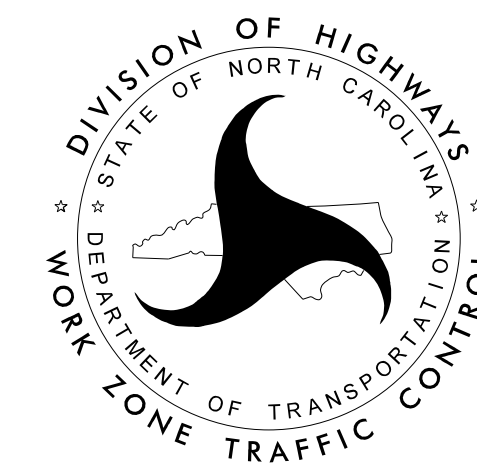
VICINITY MAP - CATAWBA CO.

SHEET NO.	TITLE
TMP-1	TITLE SHEET, VICINITY MAP AND INDEX OF SHEETS
TMP-1A	LIST OF APPLICABLE ROADWAY STANDARD DRAWINGS, LEGEND AND TEMPORARY TRAFFIC CONTROL PHASING
TMP-1B	TRANSPORTATION OPERATIONS PLAN: (MANAGEMENT STRATEGIES, GENERAL NOTES AND LOCAL NOTES)
TMP-2	PROJECT OVERVIEW
TMP-3	BRIDGES NO. 77, 78, 104 & 106 AT US 321 - DETOURS FOR THE CLOSURE OF US 321 NORTH COLLECTOR
TMP-4	BRIDGES NO. 77, 78, 104 & 106 AT US 321 - DETOURS FOR THE CLOSURE OF US 321 SOUTH COLLECTOR
TMP-5	DETOUR RAMP CLOSURE INSETS
TMP-6	TEMPORARY SHOULDER CLOSURES
TMP-7	TEMPORARY LANE CLOSURE - 2-LANE, 2-WAY ROADWAY - 1 LANE CLOSED
TMP-8	TEMPORARY LANE CLOSURE - UNDIVIDED MULTI-LANE ROADWAY - CENTER LANES CLOSED
TMP-9	TEMPORARY LANE CLOSURE - UNDIVIDED MULTI-LANE ROADWAY - OUTSIDE LANES CLOSED
TMP-10	TEMPORARY LANE CLOSURE - DIVIDED MULTI-LANE ROADWAY - 1 LANE CLOSED



N.C.D.O.T. WORK ZONE TRAFFIC CONTROL
 1561 MAIL SERVICE CENTER (MSC) RALEIGH, NC 27699-1561
 750 N. GREENFIELD PARKWAY, GARNER, NC 27529 (DELIVERY)
 PHONE: (919) 773-2800 FAX: (919) 771-2745

J. S. BOURNE, P.E. STATE TRAFFIC MANAGEMENT ENGINEER
 J. W. WOOLARD, P.E. TRAFFIC CONTROL PROJECT ENGINEER
 L. D. STOUCHKO, P.E. TRAFFIC CONTROL PROJECT DESIGN ENGINEER
 TRAFFIC CONTROL DESIGN ENGINEER



APPROVED: *Lori Stouchko*
 DATE: 8/17/2015

SEAL

8/17/2015 P:\TIP\Projects-BP\BP5500D\TrafficControl\TCP\BP-5500D_TC_TMP_01 Title.dgn User:ldstouchko