

**This electronic collection of documents is provided
for the convenience of the user
and is Not a Certified Document –**

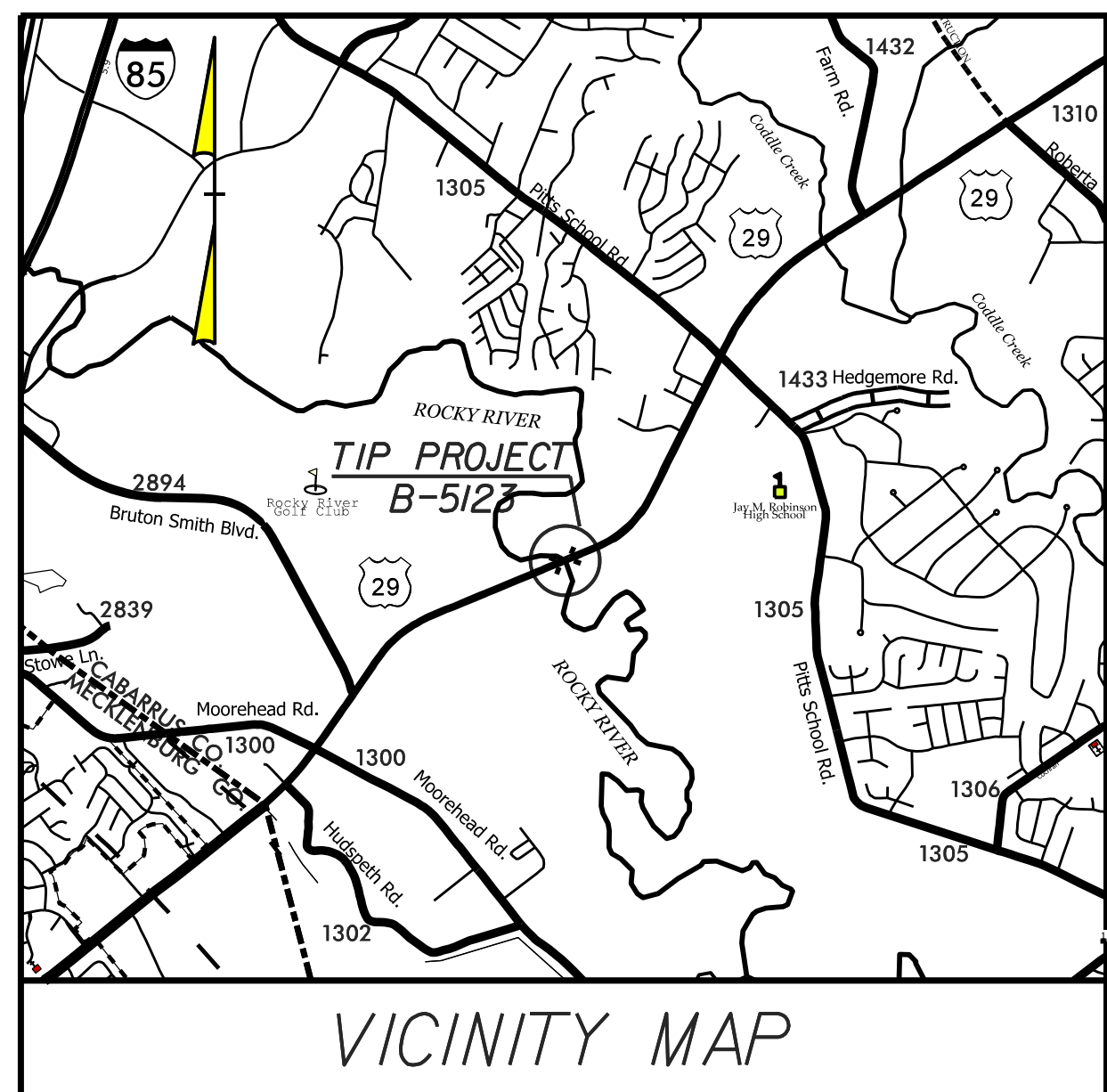
**The documents contained herein were originally issued
and sealed by the individuals whose names and license
numbers appear on each page, on the dates appearing
with their signature on that page.**

**This file or an individual page
shall not be considered a certified document.**

09.08/99

See Sheet 1-A For Index of Sheets

T.I.P. NO.	SHEET NO.
B-5123	UO-1



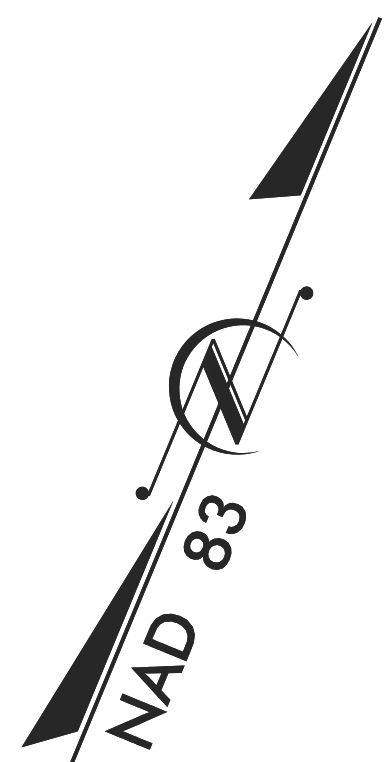
VICINITY MAP

STATE OF NORTH CAROLINA
DIVISION OF HIGHWAYS

UTILITIES BY OTHERS CABARRUS COUNTY

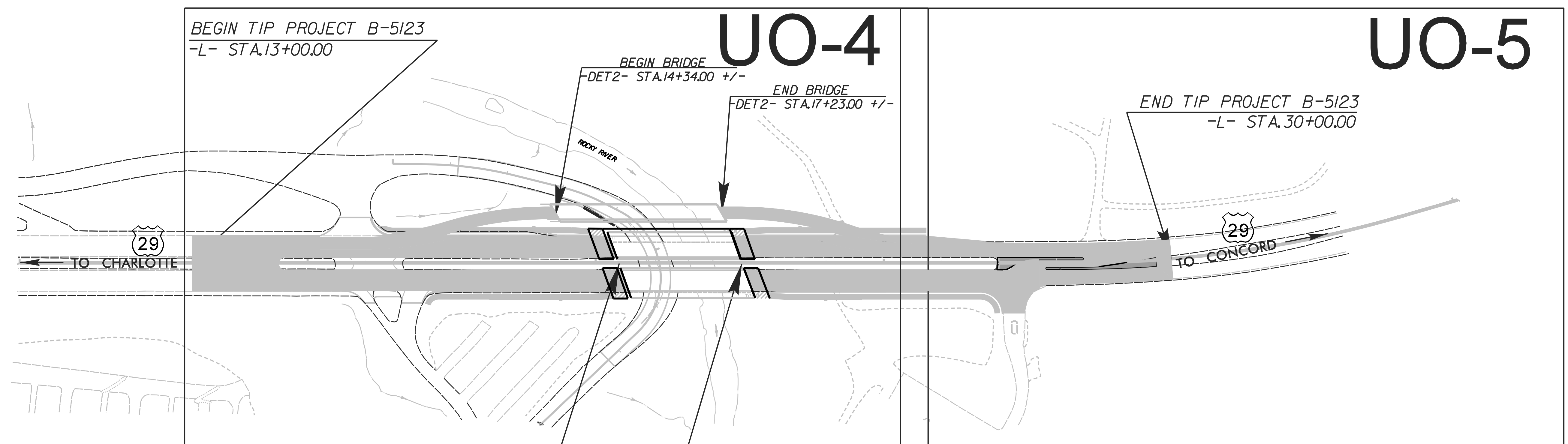
LOCATION: BRIDGES #14 AND #19 ON US 29 OVER ROCKY RIVER AND ACCESS RD.

**TYPE OF WORK: OVERHEAD AND UNDERGROUND
POWER & TELECOMMUNICATIONS RELOCATION**



TIP PROJECT: B-5123

CONTRACT:



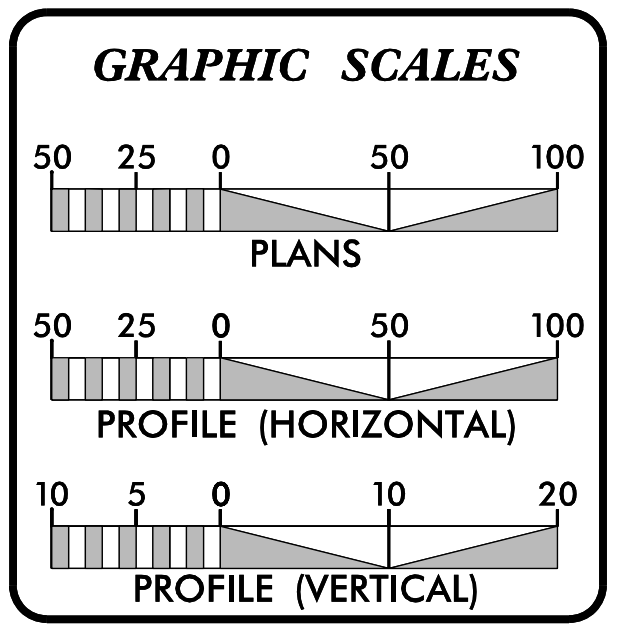
USE CLEARING METHOD NO.

KCI
ASSOCIATES OF N.C.

CIVIL ENGINEERS
ENVIRONMENTAL - CEI
LAND SURVEYING
SUBSURFACE UTILITY
ENGINEERING

SUITE 220, LANDMARK CENTER II,
4601 SIX FORKS ROAD
RALEIGH, NORTH CAROLINA 27609
(919) 783-9214
WWW.KCI.COM

FINAL PLANS
NOVEMBER 3, 2015



INDEX OF SHEETS

SHEET NO.	DESCRIPTION
UO-1	TITLE SHEET
UO-2	GENERAL NOTES
UO-3	CONVENTIONAL PLAN SHEET SYMBOLS
UO-4 THRU UO-5	UTILITIES BY OTHERS PLAN SHEETS

UTILITY OWNERS ON PROJECT

(A)	DUKE - POWER (DISTRIBUTION)
(B)	CITY OF CONCORD - POWER (DISTRIBUTION)
(C)	MCI - (COMMUNICATIONS)
(D)	WINDSTREAM - (COMMUNICATIONS)
(E)	TIME WARNER COMMUNICATIONS - (COMMUNICATIONS)
(F)	PSNC - GAS (GAS DISTRIBUTION)

PREPARED IN THE OFFICE OF:
**DIVISION OF HIGHWAYS
UTILITIES UNIT
UTILITIES ENGINEERING SECTION**

1555 MAIL SERVICES CENTER
RALEIGH, NC 27699-1555
PHONE (919) 707-6690
FAX (919) 250-4119

Roger Worthington, P.E. UTILITIES SECTION ENGINEER
Carl Barclay, P.E. UTILITIES SQUAD LEADER PROJECT ENGINEER
Bo Hemphill, P.E. UTILITIES PROJECT DESIGNER

8:21:19 AM
290_001_B5123_ut-1-sh_u001_psh.dgn
Joshua Barbour - Division: P007 Utility Services Emp

Note: Not to Scale

*S.U.E. = Subsurface Utility Engineering

STATE OF NORTH CAROLINA
DIVISION OF HIGHWAYS

CONVENTIONAL PLAN SHEET SYMBOLS

BOUNDARIES AND PROPERTY:

State Line	-----
County Line	-----
Township Line	-----
City Line	-----
Reservation Line	-----
Property Line	-----
Existing Iron Pin	○ EP
Property Corner	-----
Property Monument	□ ECM
Parcel/Sequence Number	⑩③
Existing Fence Line	-x-x-x-
Proposed Woven Wire Fence	○
Proposed Chain Link Fence	□
Proposed Barbed Wire Fence	◇
Existing Wetland Boundary	-WLB-
Proposed Wetland Boundary	-WLB-
Existing Endangered Animal Boundary	-EAB-
Existing Endangered Plant Boundary	-EPB-

BUILDINGS AND OTHER CULTURE:

Gas Pump Vent or U/G Tank Cap	○
Sign	○ S
Well	○ W
Small Mine	⋈
Foundation	□
Area Outline	□
Cemetery	□ †
Building	□
School	□
Church	□
Dam	□

HYDROLOGY:

Stream or Body of Water	-----
Hydro, Pool or Reservoir	□
Jurisdictional Stream	----- JS
Buffer Zone 1	----- BZ 1
Buffer Zone 2	----- BZ 2
Flow Arrow	←
Disappearing Stream	-----
Spring	○
Wetland	-----
Proposed Lateral, Tail, Head Ditch	-----
False Sump	-----

RAILROADS:

Standard Gauge	-----
RR Signal Milepost	○
Switch	□ SWITCH
RR Abandoned	-----
RR Dismantled	-----

RIGHT OF WAY:

Baseline Control Point	◆
Existing Right of Way Marker	△
Existing Right of Way Line	-----
Proposed Right of Way Line	-----
Proposed Right of Way Line with Iron Pin and Cap Marker	-----
Proposed Right of Way Line with Concrete or Granite Marker	-----
Existing Control of Access	○
Proposed Control of Access	○
Existing Easement Line	----- E
Proposed Temporary Construction Easement	----- E
Proposed Temporary Drainage Easement	----- TDE
Proposed Permanent Drainage Easement	----- PDE
Proposed Permanent Drainage / Utility Easement	----- DUE
Proposed Permanent Utility Easement	----- PUE
Proposed Temporary Utility Easement	----- TUE
Proposed Permanent Easement with Iron Pin and Cap Marker	-----

ROADS AND RELATED FEATURES:

Existing Edge of Pavement	-----
Existing Curb	-----
Proposed Slope Stakes Cut	----- C
Proposed Slope Stakes Fill	----- F
Proposed Wheel Chair Ramp	○ WCR
Existing Metal Guardrail	-----
Proposed Guardrail	-----
Existing Cable Guiderail	-----
Proposed Cable Guiderail	-----
Equality Symbol	⊕
Pavement Removal	XXXX

VEGETATION:

Single Tree	○
Single Shrub	○
Hedge	-----
Woods Line	-----
Orchard	-----
Vineyard	-----

EXISTING STRUCTURES:

MAJOR:	
Bridge, Tunnel or Box Culvert	----- CONC
Bridge Wing Wall, Head Wall and End Wall	----- CONC WW
MINOR:	
Head and End Wall	----- CONC HW
Pipe Culvert	-----
Footbridge	-----
Drainage Box: Catch Basin, DI or JB	□ CB
Paved Ditch Gutter	-----
Storm Sewer Manhole	○ S
Storm Sewer	----- S

UTILITIES:

POWER:	
Existing Power Pole	●
Proposed Power Pole	○
Existing Joint Use Pole	●
Proposed Joint Use Pole	○
Power Manhole	⊕
Power Line Tower	⊗
Power Transformer	⊗
U/G Power Cable Hand Hole	□ PH
H-Frame Pole	●
Recorded U/G Power Line	----- P
Designated U/G Power Line (S.U.E.*)	----- P

TELEPHONE:

Existing Telephone Pole	●
Proposed Telephone Pole	○
Telephone Manhole	⊕
Telephone Booth	□
Telephone Pedestal	□
Telephone Cell Tower	⊗
U/G Telephone Cable Hand Hole	□ PH
Recorded U/G Telephone Cable	----- T
Designated U/G Telephone Cable (S.U.E.*)	----- T
Recorded U/G Telephone Conduit	----- TC
Designated U/G Telephone Conduit (S.U.E.*)	----- TC
Recorded U/G Fiber Optics Cable	----- T FO
Designated U/G Fiber Optics Cable (S.U.E.*)	----- T FO

WATER:

Water Manhole	⊕
Water Meter	○
Water Valve	⊗
Water Hydrant	⊕
Recorded U/G Water Line	-----
Designated U/G Water Line (S.U.E.*)	-----
Above Ground Water Line	----- A/G Water

TV:

TV Satellite Dish	⊗
TV Pedestal	□
TV Tower	⊗
U/G TV Cable Hand Hole	□ PH
Recorded U/G TV Cable	----- TV
Designated U/G TV Cable (S.U.E.*)	----- TV
Recorded U/G Fiber Optic Cable	----- TV FO
Designated U/G Fiber Optic Cable (S.U.E.*)	----- TV FO

GAS:

Gas Valve	◇
Gas Meter	⊕
Recorded U/G Gas Line	----- G
Designated U/G Gas Line (S.U.E.*)	----- G
Above Ground Gas Line	----- A/G Gas

SANITARY SEWER:

Sanitary Sewer Manhole	⊕
Sanitary Sewer Cleanout	⊕
U/G Sanitary Sewer Line	----- SS
Above Ground Sanitary Sewer	----- A/G Sanitary Sewer
Recorded SS Forced Main Line	----- FSS
Designated SS Forced Main Line (S.U.E.*)	----- FSS

MISCELLANEOUS:

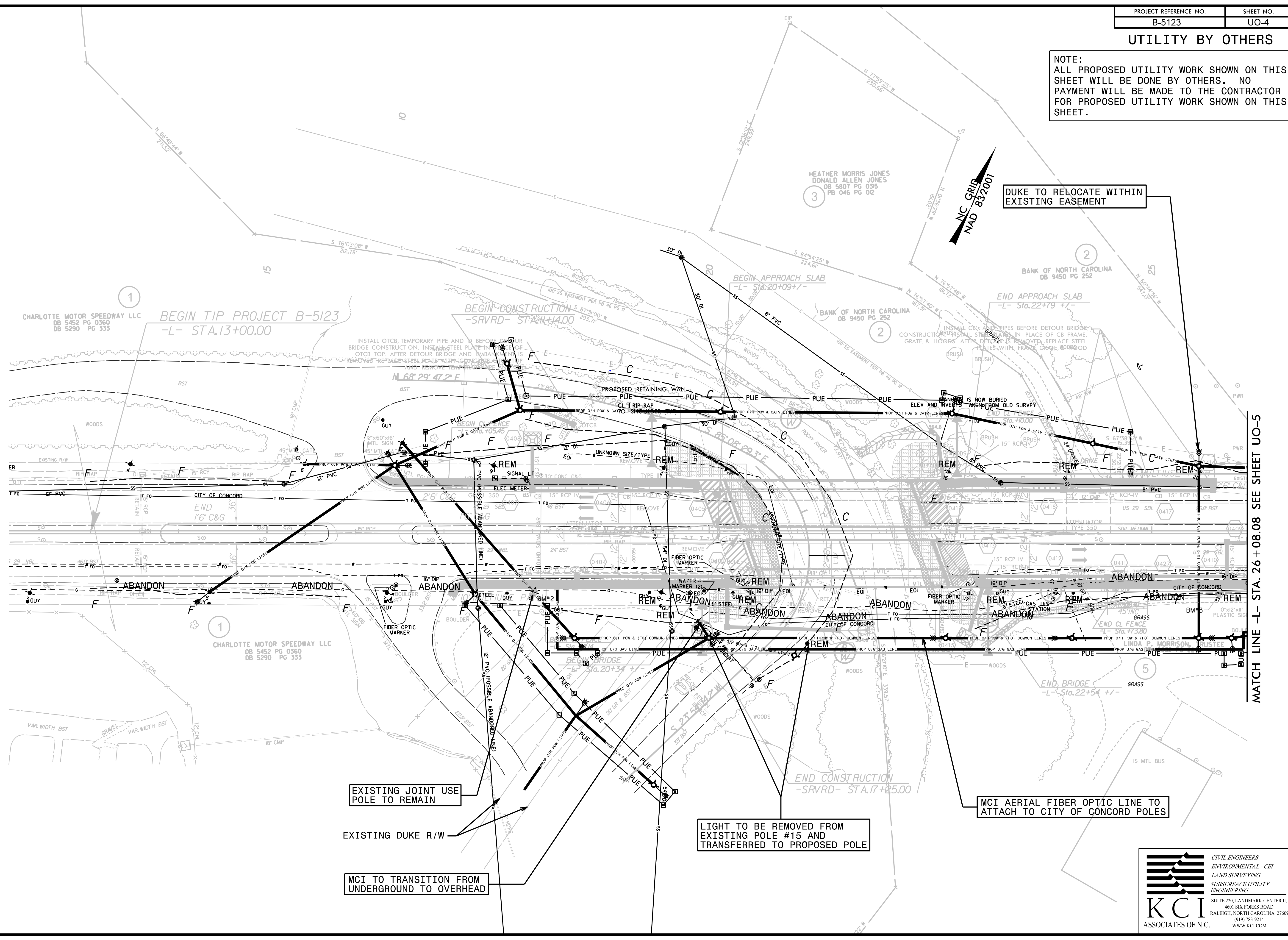
Utility Pole	●
Utility Pole with Base	□
Utility Located Object	○
Utility Traffic Signal Box	□
Utility Unknown U/G Line	----- UNL
U/G Tank; Water, Gas, Oil	□
A/G Tank; Water, Gas, Oil	□
U/G Test Hole (S.U.E.*)	⊕
Abandoned According to Utility Records	AATUR
End of Information	E.O.I.

UTILITY BY OTHERS

NOTE:
ALL PROPOSED UTILITY WORK SHOWN ON THIS SHEET WILL BE DONE BY OTHERS. NO PAYMENT WILL BE MADE TO THE CONTRACTOR FOR PROPOSED UTILITY WORK SHOWN ON THIS SHEET.

DUKE TO RELOCATE WITHIN EXISTING EASEMENT

NC GRID
NAD 83/2007



EXISTING JOINT USE POLE TO REMAIN

EXISTING DUKE R/W

MCI TO TRANSITION FROM UNDERGROUND TO OVERHEAD

LIGHT TO BE REMOVED FROM EXISTING POLE #15 AND TRANSFERRED TO PROPOSED POLE

MCI AERIAL FIBER OPTIC LINE TO ATTACH TO CITY OF CONCORD POLES

REVISIONS

MATCH LINE -L- STA. 26 + 08.08 SEE SHEET UO-5

KCI ASSOCIATES OF N.C.

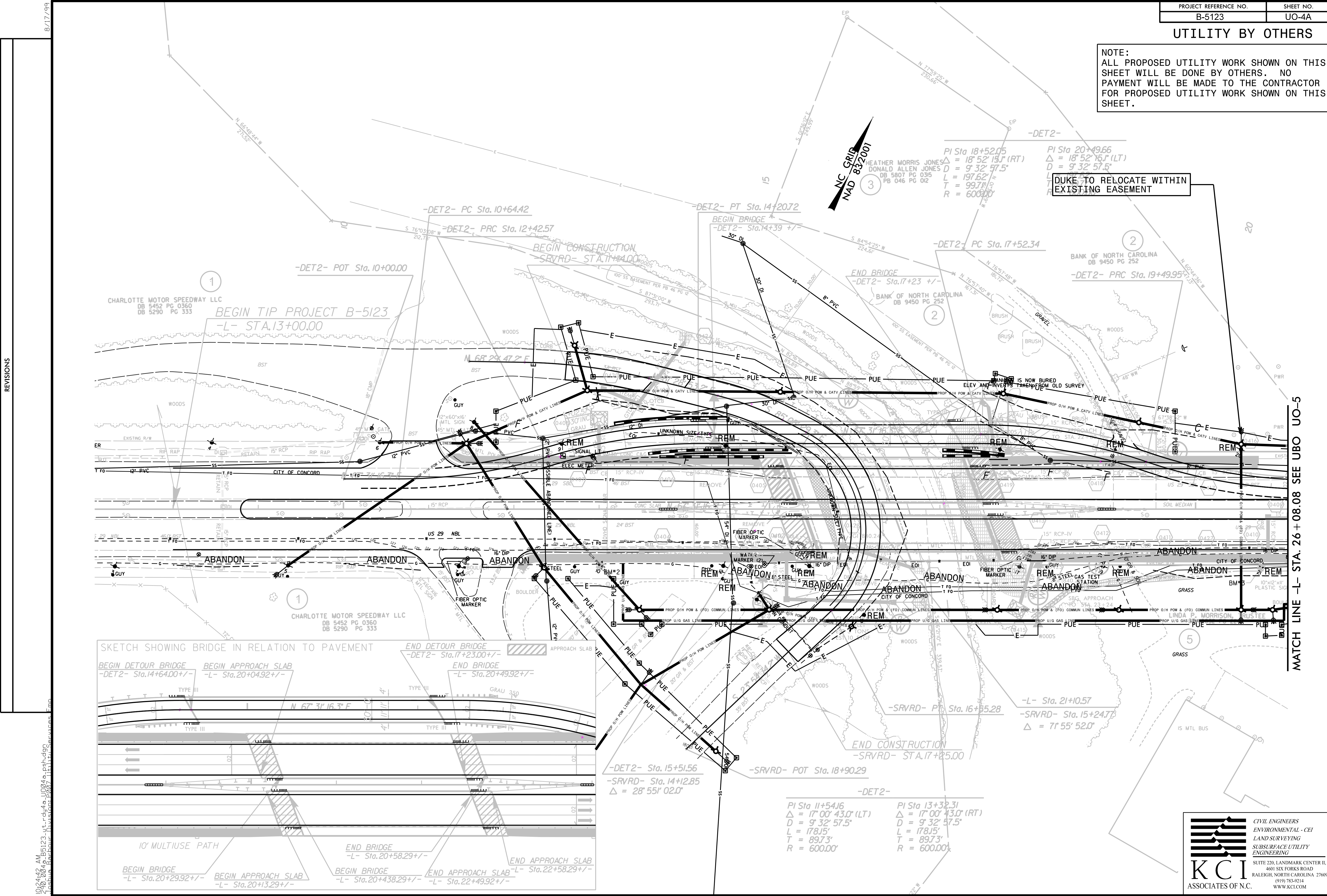
CIVIL ENGINEERS
ENVIRONMENTAL - CEI
LAND SURVEYING
SUBSURFACE UTILITY ENGINEERING

SUITE 220, LANDMARK CENTER II,
401 SIX FORKS ROAD
RALEIGH, NORTH CAROLINA 27609
(919) 783-9214
WWW.KCI.COM

8/17/99
 10:20:39 AM
 290.004_B5123-utility4_U004.dgn
 Joshua_Bailey - Division: 2007 - Utilities - Services - Inc

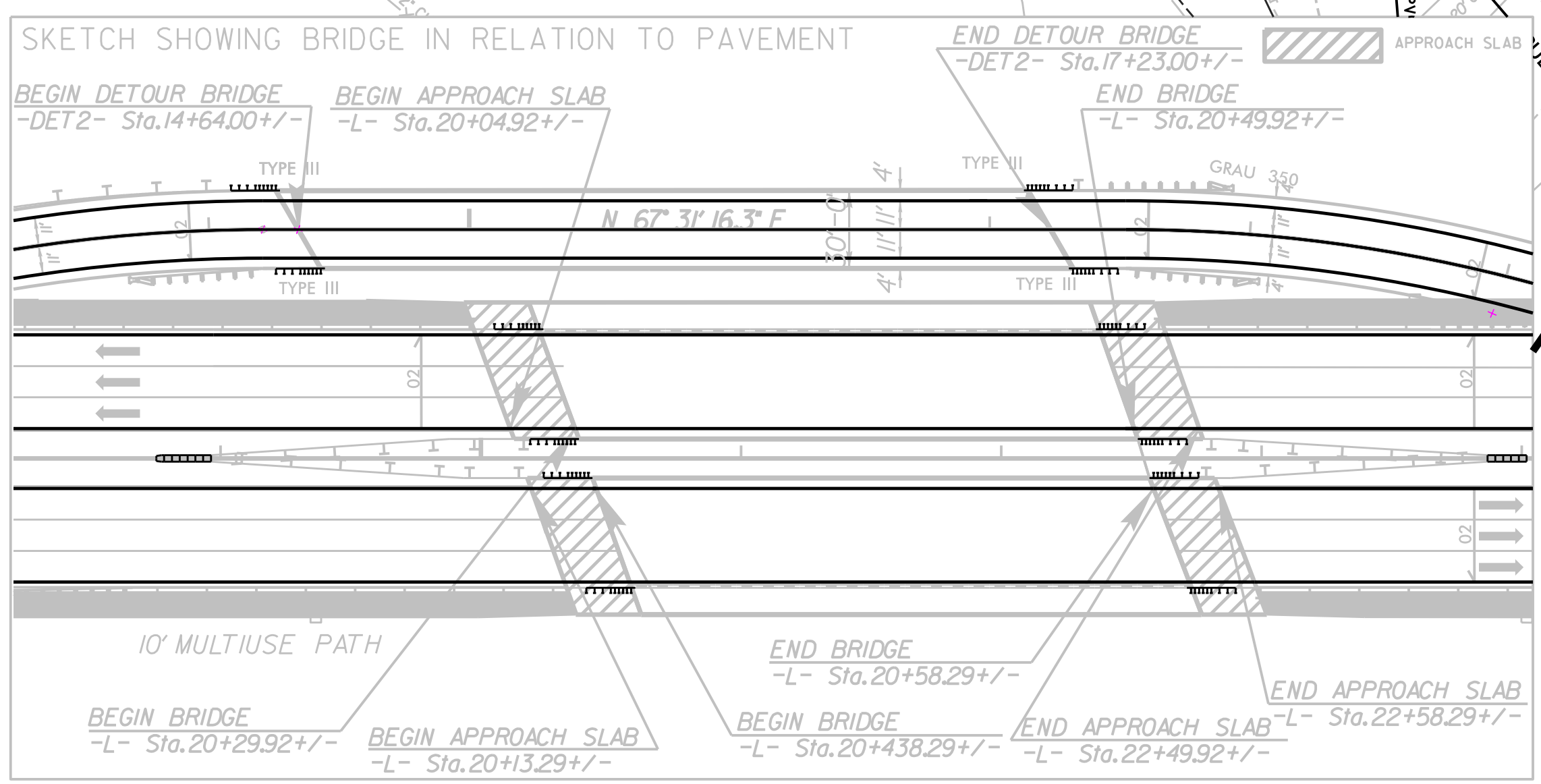
UTILITY BY OTHERS

NOTE:
ALL PROPOSED UTILITY WORK SHOWN ON THIS SHEET WILL BE DONE BY OTHERS. NO PAYMENT WILL BE MADE TO THE CONTRACTOR FOR PROPOSED UTILITY WORK SHOWN ON THIS SHEET.



REVISIONS

MATCH LINE -L- STA. 26+08.08 SEE UBO UO-5

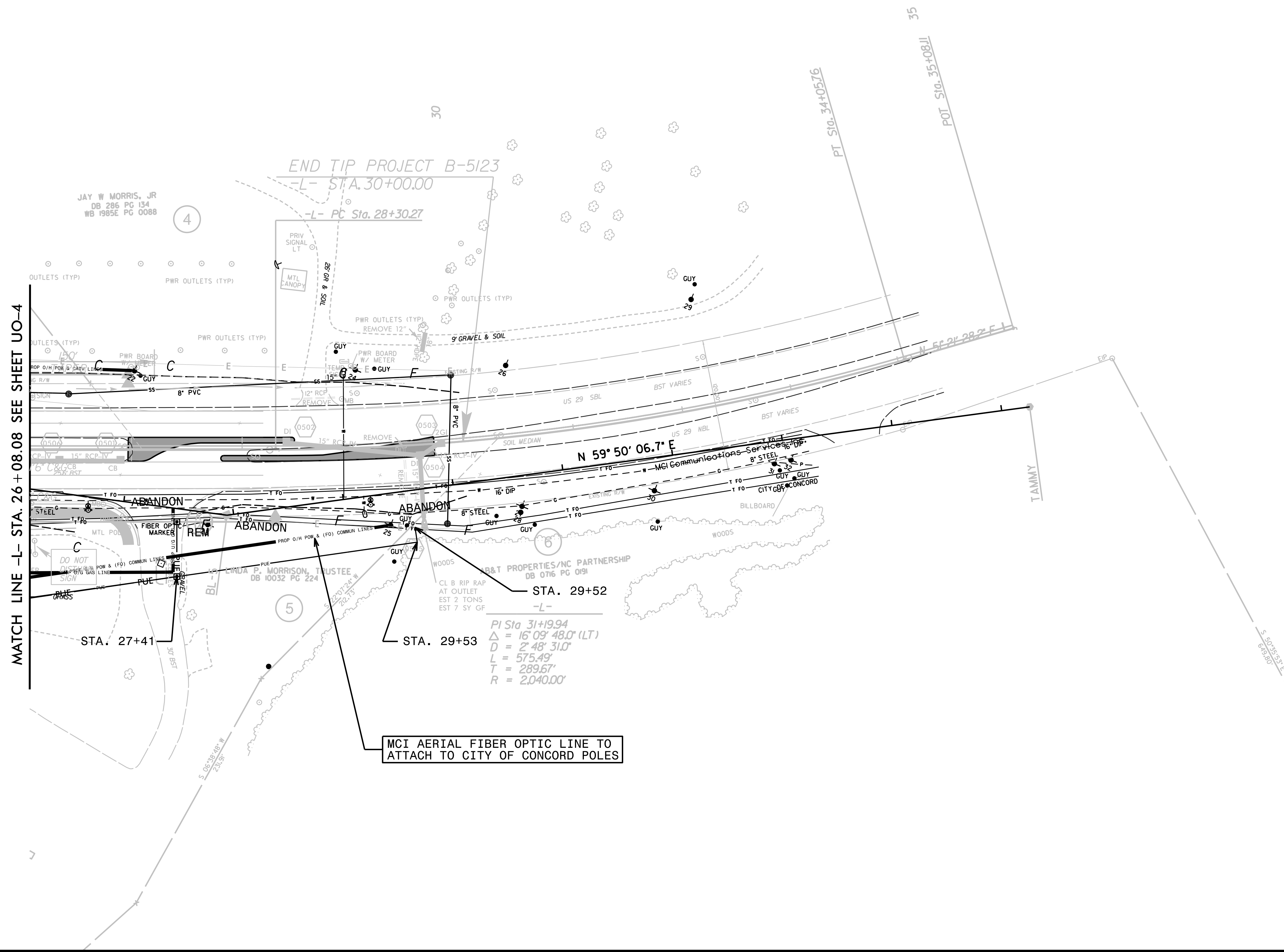


10:24:42 AM
 290_004_e_b5123_u_rdy4_a_u004_psh.dwg
 8/17/99
 Lashin, B. - Four Division - 2007

UTILITY BY OTHERS

NOTE:
 ALL PROPOSED UTILITY WORK SHOWN ON THIS SHEET WILL BE DONE BY OTHERS. NO PAYMENT WILL BE MADE TO THE CONTRACTOR FOR PROPOSED UTILITY WORK SHOWN ON THIS SHEET.

REVISIONS
 10/26/19 AM 2:40:06 PM B:\5123\utility\UO05_gsh.dgn
 Joshua_Baughman - Division: 1207 - Utilities Services, Inc.



MATCH LINE -L- STA. 26 + 08.08 SEE SHEET UO-4

MCI AERIAL FIBER OPTIC LINE TO ATTACH TO CITY OF CONCORD POLES

STA. 29+52
 -L-
 PI Sta 31+19.94
 $\Delta = 16' 09' 48.0''$ (LT)
 $D = 2' 48' 31.0''$
 $L = 575.49'$
 $T = 289.67'$
 $R = 2,040.00'$