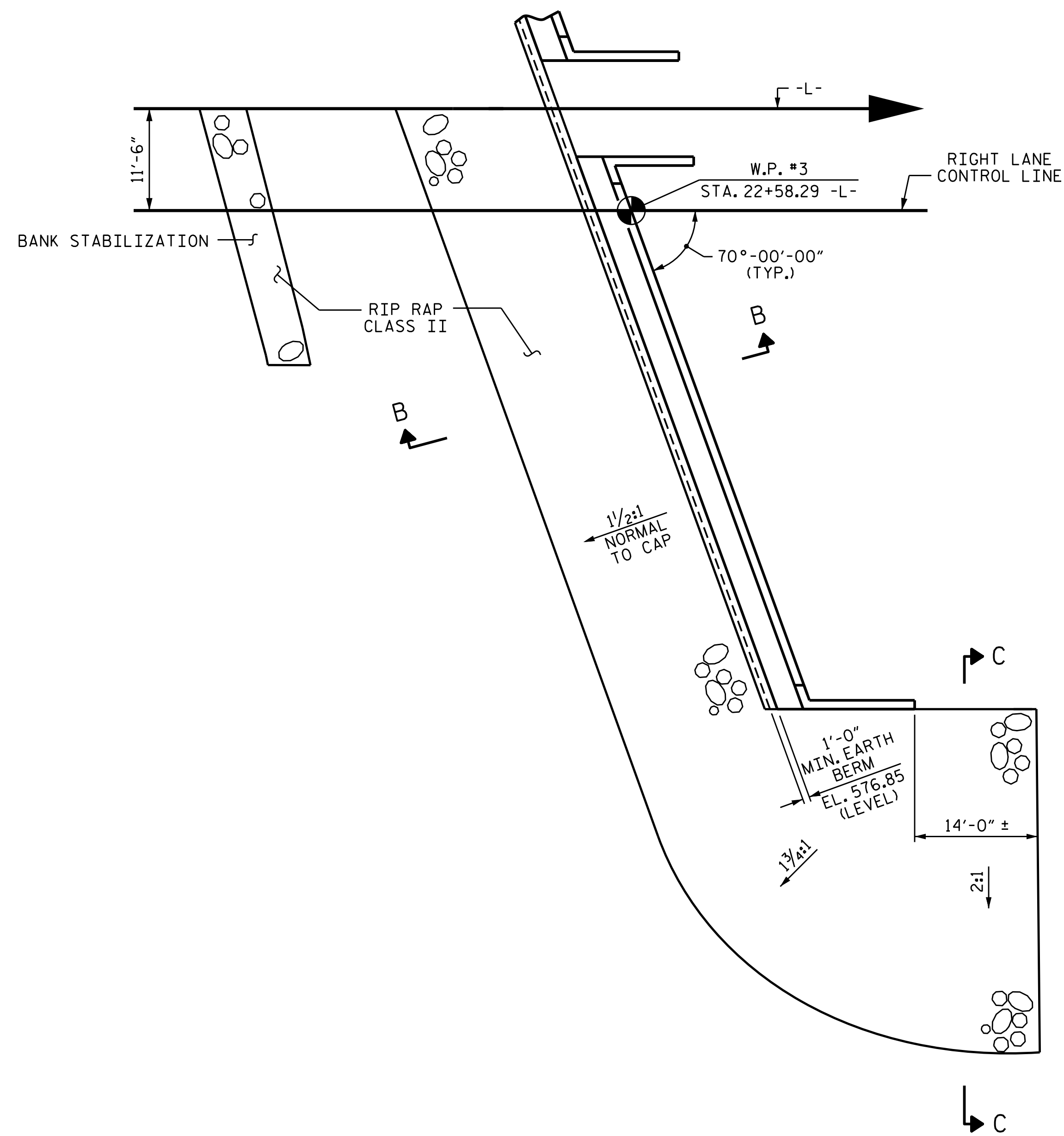
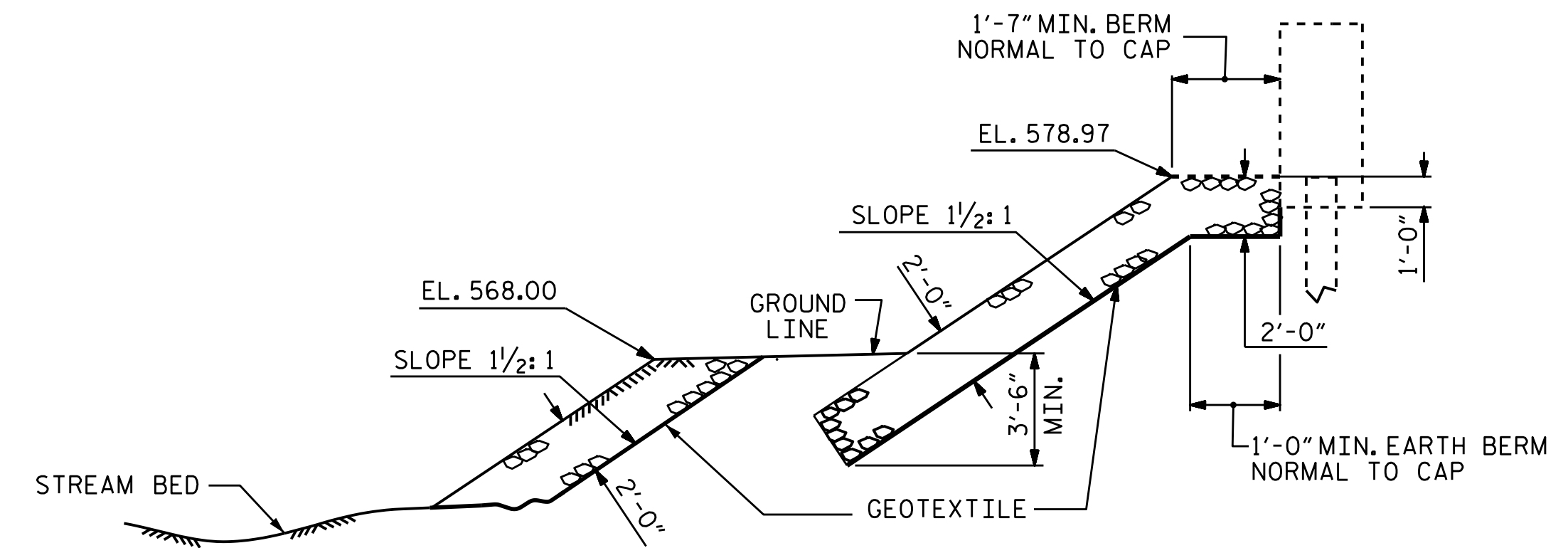


ESTIMATED QUANTITIES

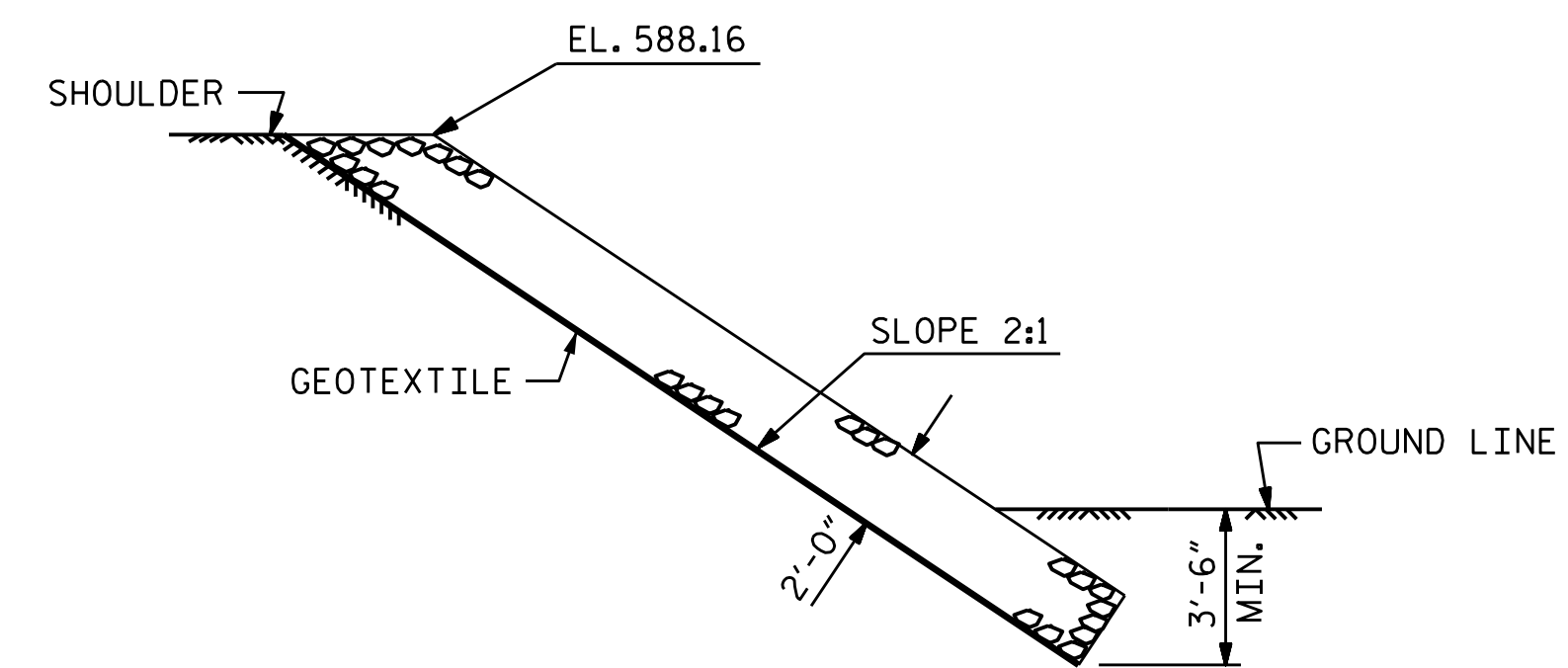
BRIDGE @ STA. 21+44.10 -L-	RIP RAP CLASS II (2'-0" THICK)	GEOTEXTILE FOR DRAINAGE
	TONS	SQUARE YARDS
BANK STABILIZATION NEAR END BENT 2	50	55
END BENT 2	475	530
TOTAL	525	585



PLAN OF RIP RAP

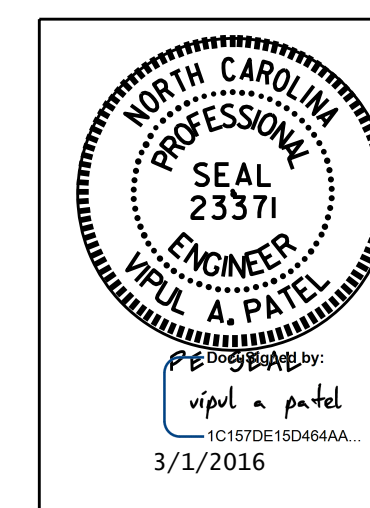


SECTION B-B



SECTION C-C

PROJECT NO. B-5123
IREDELL COUNTY
 STATION: 21+44.10 -L-



STATE OF NORTH CAROLINA
 DEPARTMENT OF TRANSPORTATION
 RALEIGH

RIP RAP DETAILS

(RIGHT LANE)

REVISIONS

NO.	BY:	DATE:	NO.	BY:	DATE:	SHEET NO.
1			3			S-71
2			4			TOTAL SHEETS 74

DOCUMENT NOT CONSIDERED
 FINAL UNLESS ALL
 SIGNATURES COMPLETED

ASSEMBLED BY: N.D. AIUTO DATE: 11/12/15
 CHECKED BY: K.D. LAYNE DATE: 11/17/15
 DESIGN ENGINEER OF RECORD: T.H. CARROLL DATE: 12/7/15