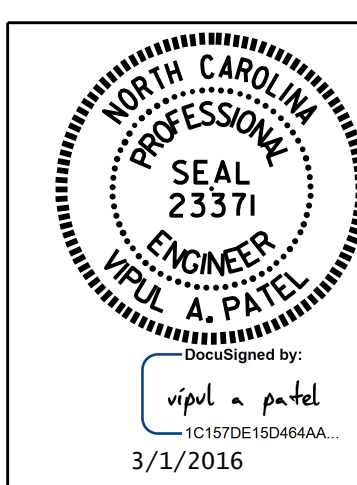


PLAN OF SPAN A

INTERMEDIATE STEEL DIAPHRAGMS NOT SHOWN FOR CLARITY. FOR DETAILS, SEE "INTERMEDIATE STEEL DIAPHRAGMS FOR MODIFIED BULB TEE PRESTRESSED CONCRETE GIRDERS" SHEET
 SEE "PLAN OF SPAN DETAILS" FOR ADDITIONAL REINFORCING STEEL IN WINGS
 SEE SHEET 2 OF 4 FOR TRANSVERSE CONSTRUCTION JOINT DETAIL

PROJECT NO. B-5123
CABARRUS COUNTY
 STATION: 21+44.10 -L-

SHEET 1 OF 4



STATE OF NORTH CAROLINA
 DEPARTMENT OF TRANSPORTATION
 RALEIGH
 SUPERSTRUCTURE
PLAN OF SPAN A
 (RIGHT LANE)

DRAWN BY: N.D. AIUTO DATE: 11/9/15
 CHECKED BY: K.D. LAYNE DATE: 11/13/15
 DESIGN ENGINEER OF RECORD: I.H. CARROLL DATE: 12/7/15

DOCUMENT NOT CONSIDERED FINAL UNLESS ALL SIGNATURES COMPLETED

REVISIONS						SHEET NO. S-44 TOTAL SHEETS 74
NO.	BY:	DATE:	NO.	BY:	DATE:	
1			3			STR. #2
2			4			