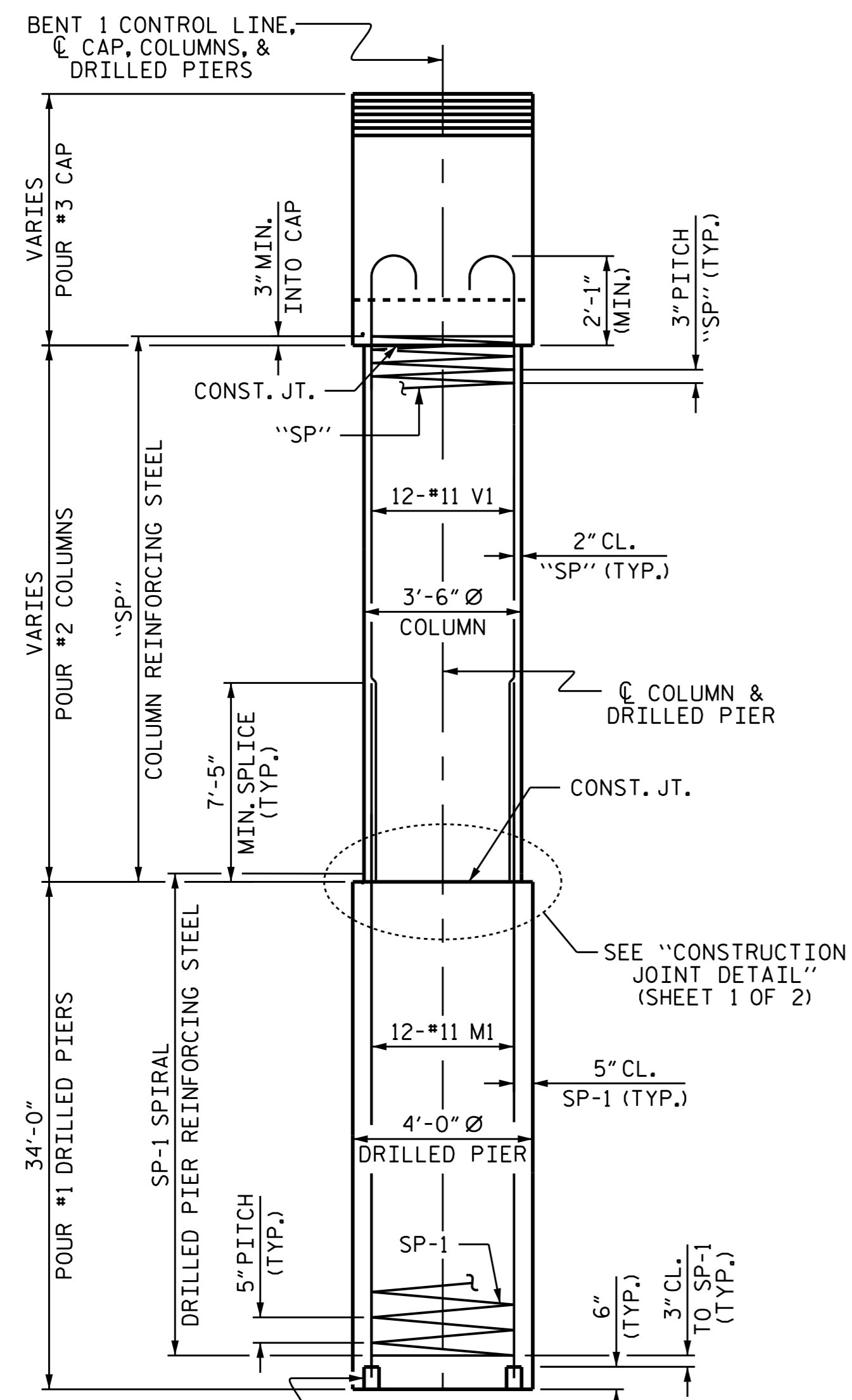
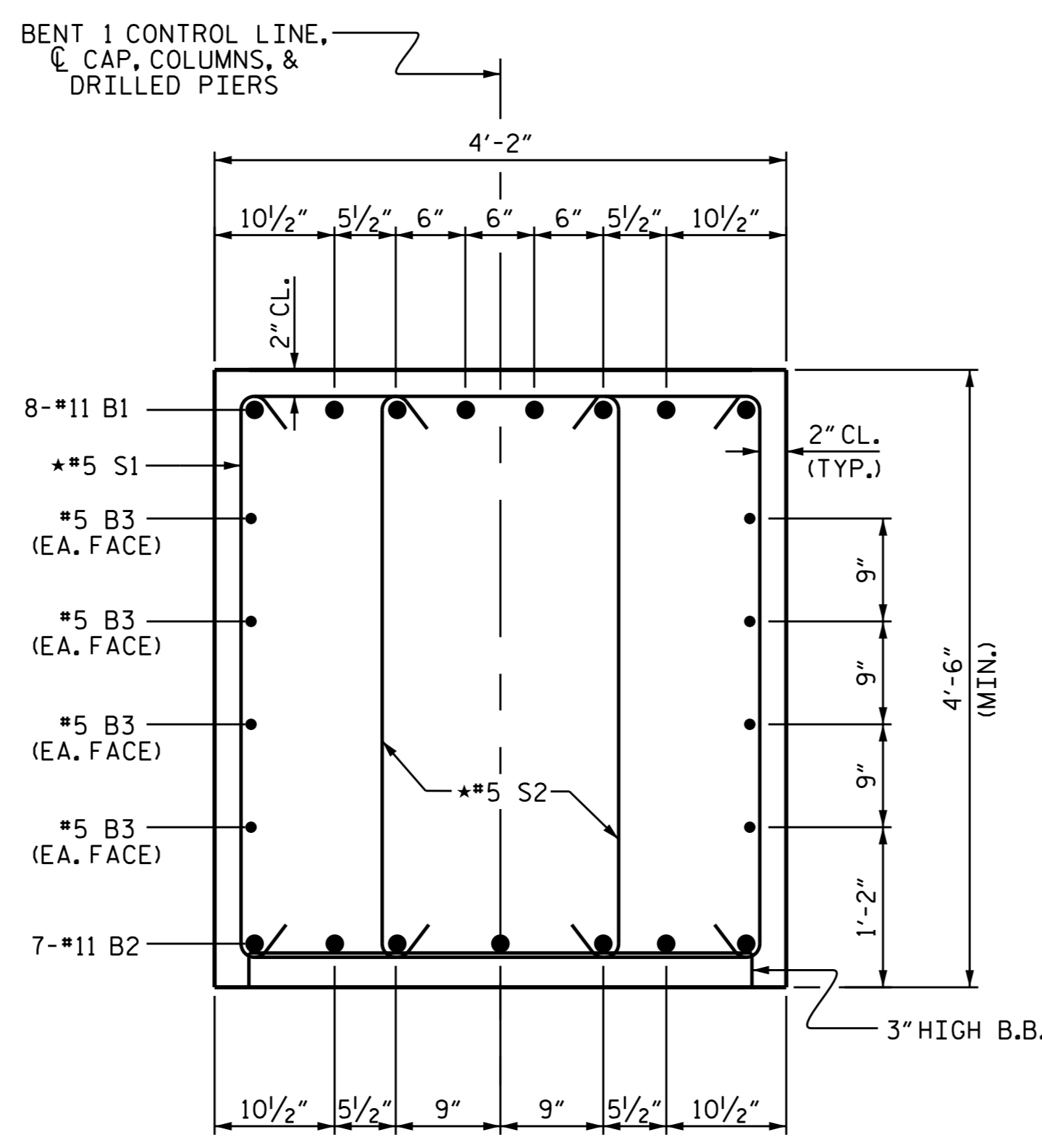


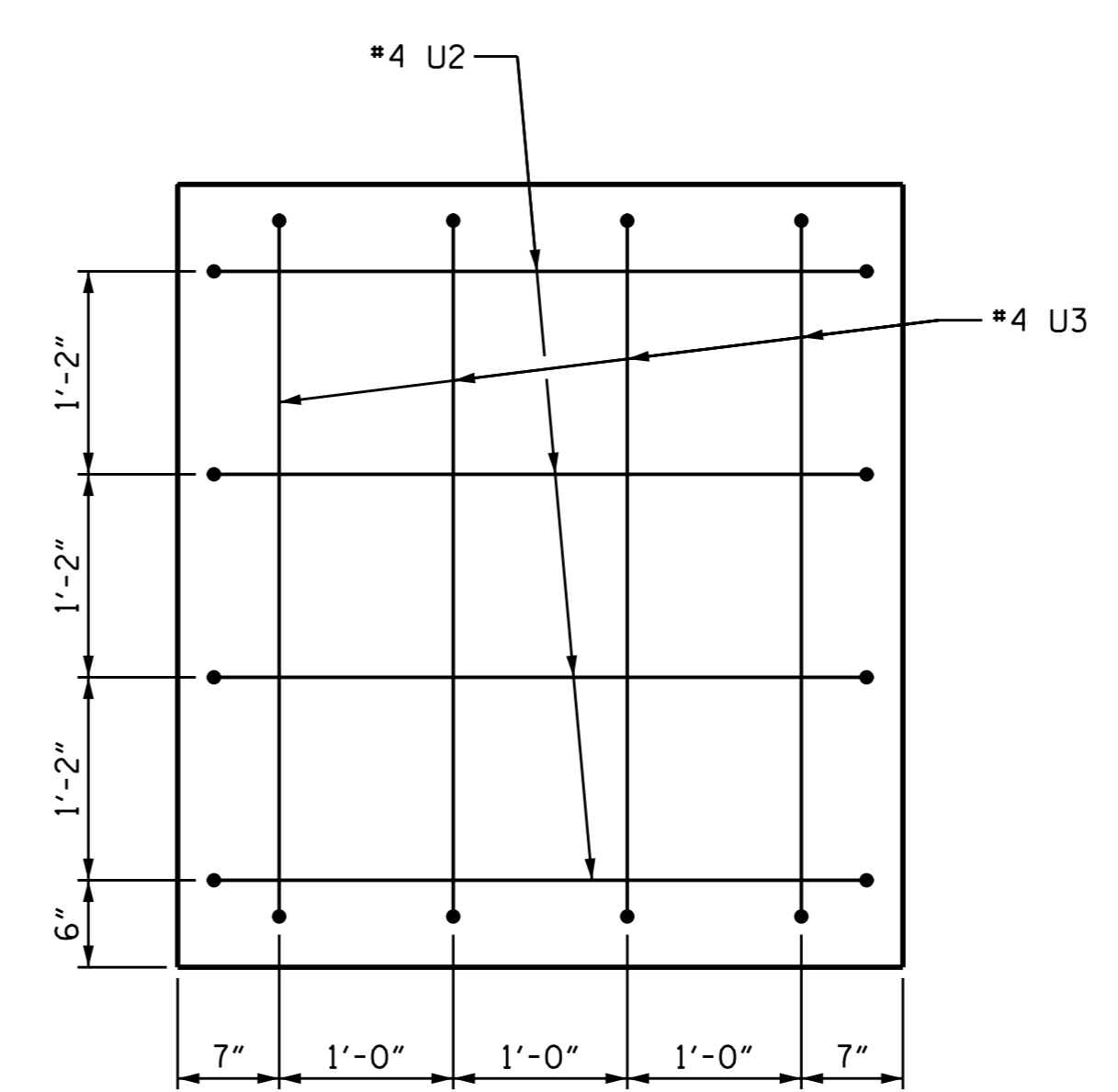
PLAN OF COLUMNS & DRILLED PIERS



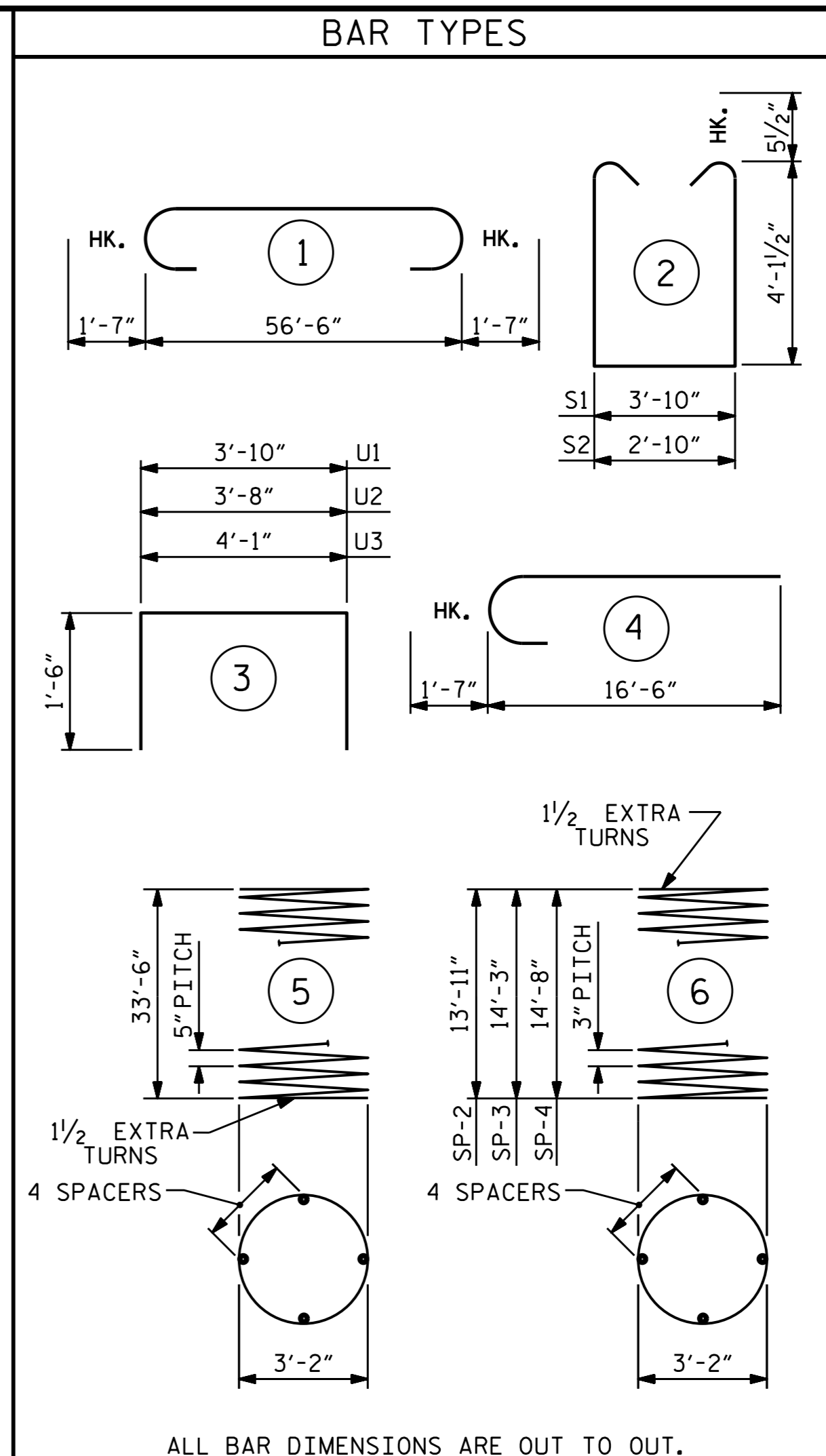
LEFT END ELEVATION



SECTION A-A
*INVERT ALTERNATE STIRRUPS



END VIEW
(TYP. EACH END)



ALL BAR DIMENSIONS ARE OUT TO OUT.

BILL OF MATERIAL					
BAR NO.	SIZE	TYPE	LENGTH	WEIGHT	
B1	#11	1	59'-8"	2536	
B2	#11	STR	56'-8"	2107	
B3	#5	STR	56'-8"	473	
M1	#11	STR	44'-2"	8448	
S1	#5	2	13'-0"	732	
S2	#5	2	12'-0"	350	
U1	#4	3	6'-10"	288	
U2	#4	3	6'-8"	36	
U3	#4	3	7'-1"	38	
V1	#11	4	18'-1"	3,459	
REINFORCING STEEL			LBS.	18,467	
SP-1	3	**	5	803'-1"	2513
SP-2	1	*	6	562'-3"	376
SP-3	1	*	6	574'-7"	384
SP-4	1	*	6	591'-9"	395
SPIRAL COLUMN REINFORCING STEEL			LBS.	3,668	
** THE SP-1 SPIRAL REINFORCING STEEL SHALL BE W31 OR D-31 COLD DRAWN WIRE OR #5 PLAIN OR DEFORMED BAR.					
* THE SP-2, SP-3, & SP-4 SPIRAL REINFORCING STEEL SHALL BE W20 OR D-20 COLD DRAWN WIRE OR #4 PLAIN OR DEFORMED BAR.					
CLASS A CONCRETE			C.Y.	40.4	
POUR #3 (CAP)			C.Y.	15.0	
POUR #2 (COLUMNS)			C.Y.	55.4	
TOTAL CLASS A CONCRETE			C.Y.	55.4	
DRILLED PIER QUANTITIES					
DRILLED PIER CONCRETE			C.Y.	47.5	
POUR #1 (DRILLED PIERS)			C.Y.	47.5	
4'-0" Ø DRILLED PIERS IN SOIL			LIN. FT.	69.00	
4'-0" Ø DRILLED PIERS NOT IN SOIL			LIN. FT.	33.00	
PERMANENT STEEL CASING FOR 4'-0" Ø DRILLED PIER			LIN. FT.	69.00	
SID INSPECTIONS			EA.	1	
SPT TESTING			EA.	1	
CSL TESTING			EA.	1	
CSL TUBES			LIN. FT.	426	

PROJECT NO. B-5123
CABARRUS COUNTY
 STATION: 21+44.10 -L-

SHEET 2 OF 2



STATE OF NORTH CAROLINA
 DEPARTMENT OF TRANSPORTATION
 RALEIGH

SUBSTRUCTURE
BENT 1
 (LEFT LANE)

REVISIONS			SHEET NO.
NO.	BY:	DATE:	S-30
1			TOTAL SHEETS
2			74

DOCUMENT NOT CONSIDERED FINAL UNLESS ALL SIGNATURES COMPLETED

DRAWN BY: J.K. BOWLES DATE: 8/7/15
 CHECKED BY: N.D'AIUTO DATE: 8/20/15
 DESIGN ENGINEER OF RECORD: T.H. CARROLL DATE: 12/7/15