

PLAN

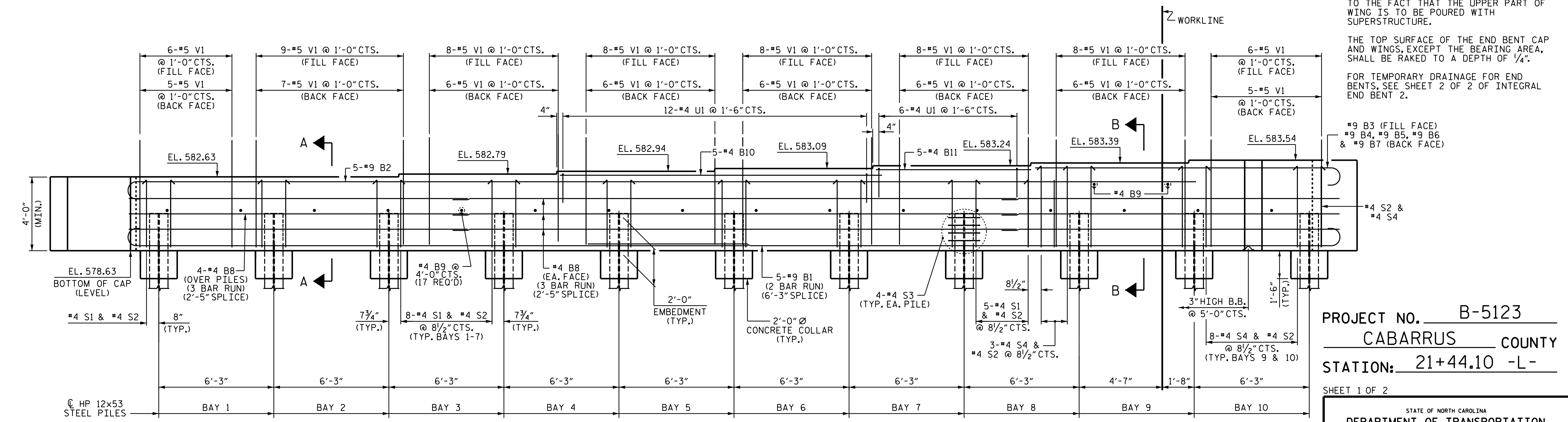
NOTES

SEE SUPERSTRUCTURE SHEETS FOR UPPER PART OF INTEGRAL END BENT DETAILS.

THE CONTRACTOR'S ATTENTION IS CALLED TO THE FACT THAT THE UPPER PART OF WING IS TO BE POURED WITH SUPERSTRUCTURE.

THE TOP SURFACE OF THE END BENT CAP AND WINGS, EXCEPT THE BEARING AREA, SHALL BE RAKED TO A DEPTH OF 1/4".

FOR TEMPORARY DRAINAGE FOR END BENTS, SEE SHEET 2 OF 2 OF INTEGRAL END BENT 2.



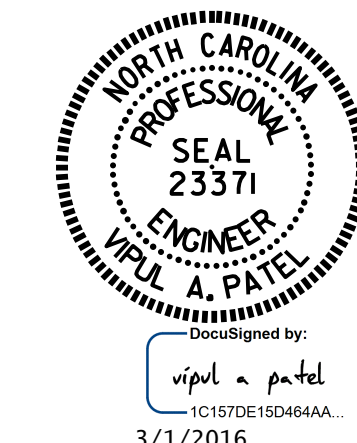
ELEVATION

PROJECT NO. B-5123

CABARRUS COUNTY

STATION: 21+44.10 -L-

SHEET 1 OF 2



STATE OF NORTH CAROLINA
 DEPARTMENT OF TRANSPORTATION
 RALEIGH
 SUBSTRUCTURE
 INTEGRAL END BENT 1
 (LEFT LANE)

DRAWN BY: N.D. AIUTO DATE: 8/5/15
 CHECKED BY: K.D. LAYNE DATE: 8/24/15
 DESIGN ENGINEER OF RECORD: T.H. CARROLL DATE: 12/7/15

DOCUMENT NOT CONSIDERED FINAL UNLESS ALL SIGNATURES COMPLETED

REVISIONS			SHEET NO.		
NO.	BY:	DATE:	NO.	BY:	DATE:
1			3		
2			4		
					TOTAL SHEETS
					74