

PROJECT REFERENCE NO. B-5123	SHEET NO. EC-9/CONST.5
RW SHEET NO.	
ROADWAY DESIGN ENGINEER	HYDRAULICS ENGINEER



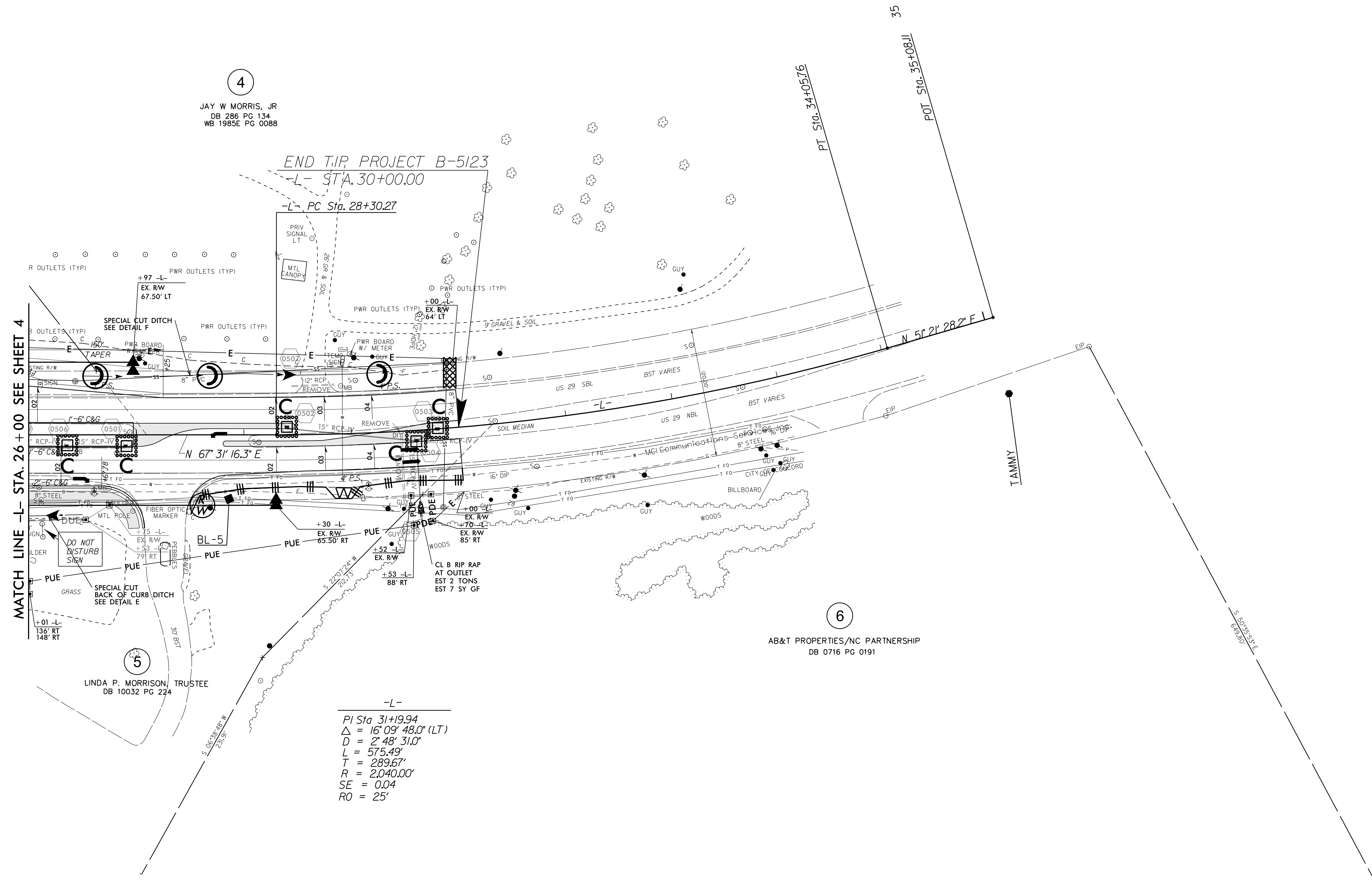
4  
JAY W MORRIS, JR  
DB 286 PG 134  
WB 1985E PG 0088

END TIP PROJECT B-5123

-L- STA. 30+00.00

-L- PC Sta. 28+30.27

MATCH LINE -L- STA. 26+00 SEE SHEET 4



5  
LINDA P. MORRISON, TRUSTEE  
DB 10032 PG 224

6  
AB&T PROPERTIES/NC PARTNERSHIP  
DB 0716 PG 0191

-L-  
PI Sta 31+19.94  
 $\Delta = 16^{\circ} 09' 48.0''$  (LT)  
 $D = 2^{\circ} 48' 31.0''$   
 $L = 575.49'$   
 $T = 289.67'$   
 $R = 2,040.00'$   
 $SE = 0.04$   
 $RO = 25'$

8/17/99

29 DEC 2015 11:25  
R:\Projects\B-5123\Design\B-5123-EC-psh5.dgn  
TAMMY-269783