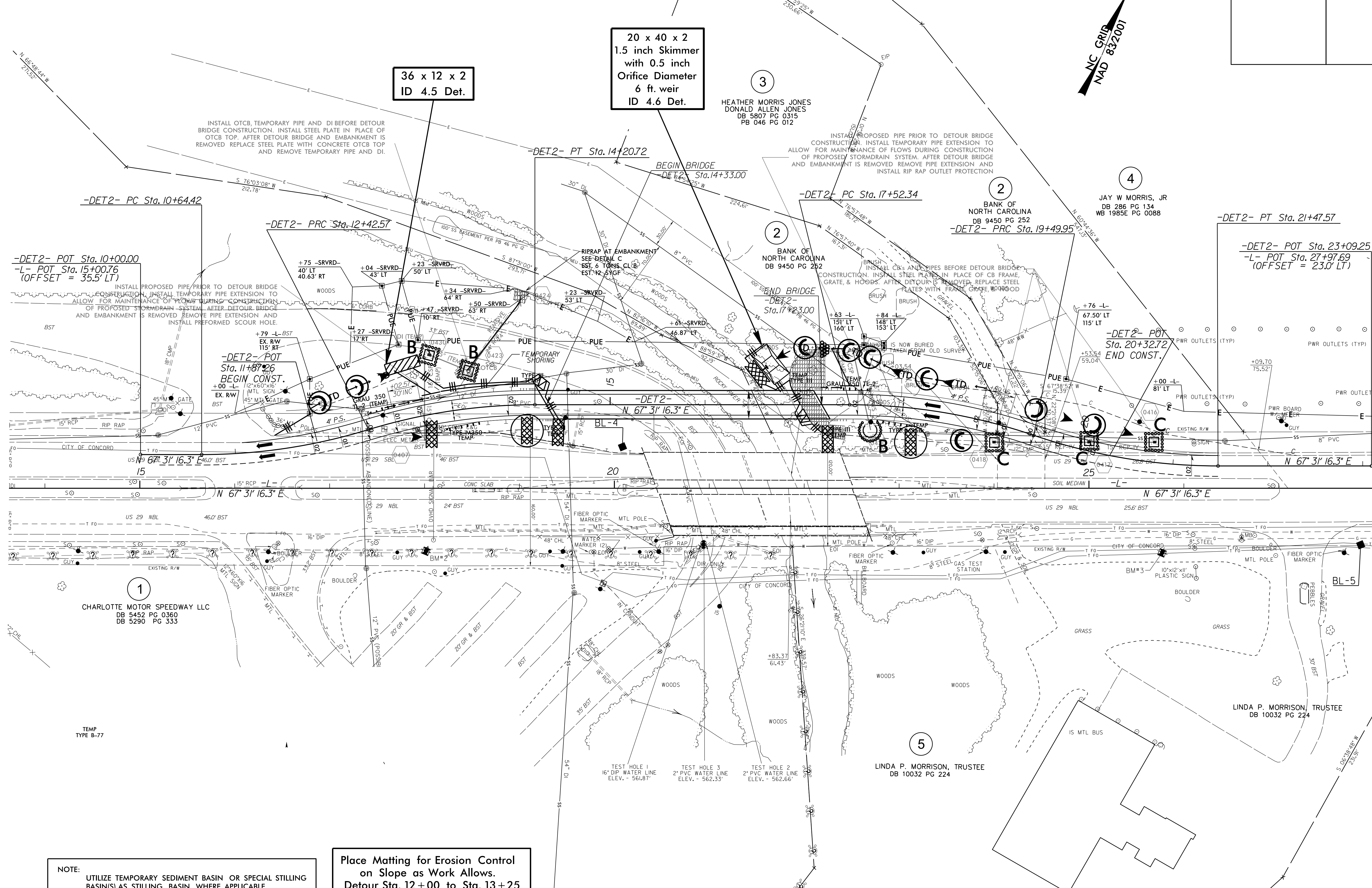
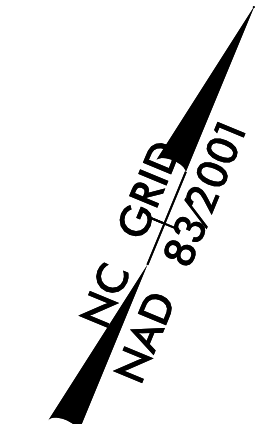


PROJECT REFERENCE NO. B-5123	SHEET NO. EC-B/CONST.4A
RW SHEET NO.	
ROADWAY DESIGN ENGINEER	HYDRAULICS ENGINEER

DETOUR DESIGN SPEED = 45 MPH



NOTE:
UTILIZE TEMPORARY SEDIMENT BASIN OR SPECIAL STILLING BASIN(S) AS STILLING BASIN WHERE APPLICABLE.

Place Matting for Erosion Control on Slope as Work Allows.
Detour Sta. 12+00 to Sta. 13+25 and Det. Sta. 17+45 to 18+00

8/17/99
29 DEC 2015 10:54
C:\Program Files\Autodesk\AutoCAD 2015\Projects\B-5123-EC-psrh4.dgn
User: psrh4