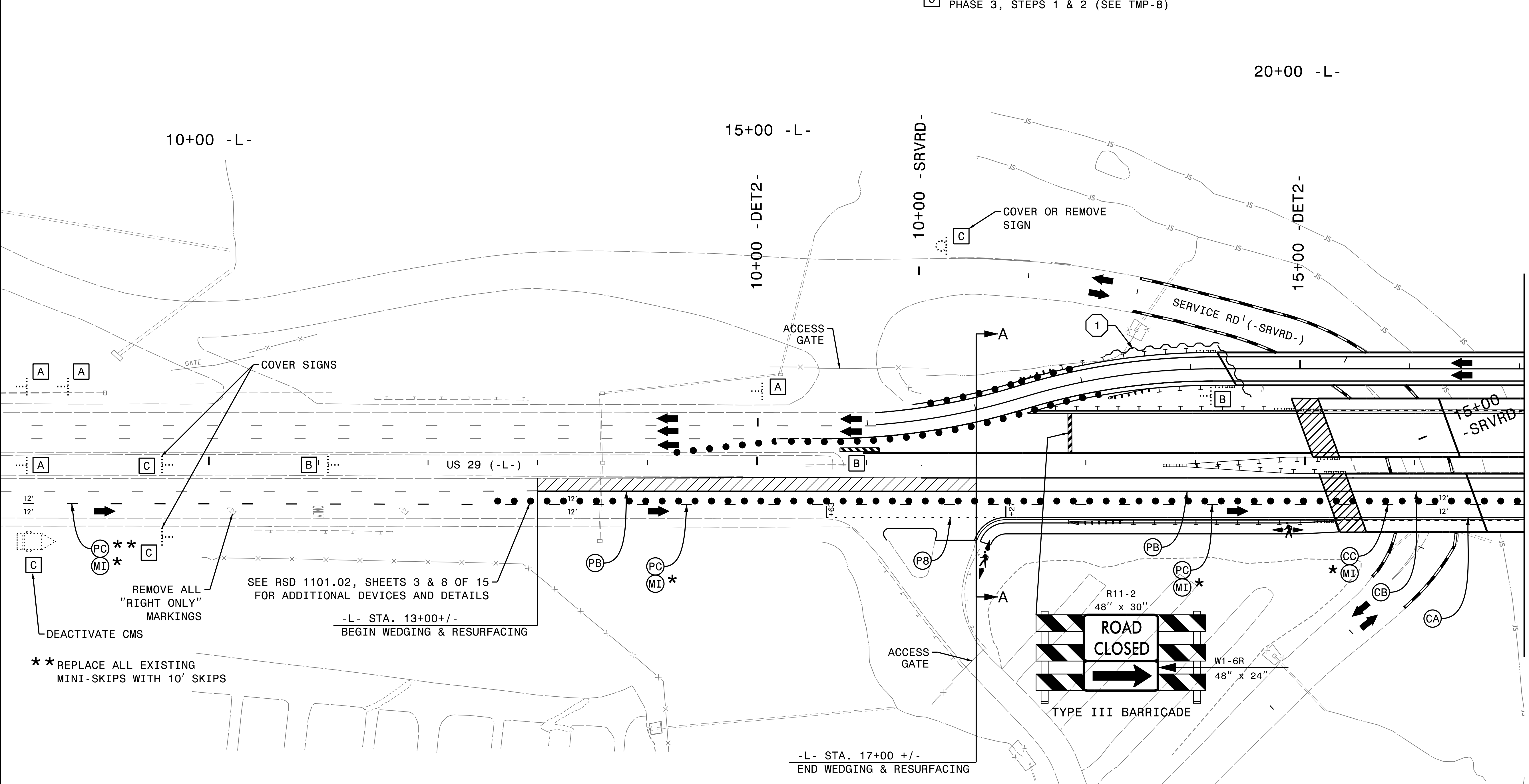


- ① TEMPORARY SHORING TO REMAIN FROM PHASE 1 (SEE TMP-4)
- SEE SHEET TMP-2A FOR TEMPORARY SHORING INFORMATION.
- A SIGNS TO REMAIN FROM PHASE 1 (SEE TMP-4)
- B SIGNS AND DEVICES TO REMAIN FROM PHASE 2 (SEE TMP-6)
- C SIGNS AND DEVICES TO REMAIN FROM PHASE 3, STEPS 1 & 2 (SEE TMP-8)

PROJ. REFERENCE NO. B-5123	SHEET NO. TMP-12
HDR Engineering, Inc. of the Carolinas 555 Fayetteville St, Suite 900 Raleigh, N.C. 27601 N.C.B.E.L.S. License Number: F-0116	

PLOT DRIVER: NCDOT_pdf_color_eng_50.pht
 USER: CHARNDEN
 DATE: 1/29/2016
 FILE: p:\WPAPP\TPA01\SouthEast\Tampa\Documents\000166\CON0079159\CON0104476\00000000272555\6.0.CAD\BIM\6.2.Work_In_Progress\TrafficControl\TCP\B-5123_TC_TMP-12-Phase4-1.dgn



** REPLACE ALL EXISTING MINI-SKIPS WITH 10' SKIPS
 * PLACE CRYSTAL/RED TEMPORARY RAISED MARKERS (MI) @ 40' SPACING ALONG THE LANE LINE BETWEEN 10' SKIPS

SEE RSD 1101.02, SHEETS 3 & 8 OF 15 FOR ADDITIONAL DEVICES AND DETAILS
 -L- STA. 13+00 +/-
 BEGIN WEDGING & RESURFACING

-L- STA. 17+00 +/-
 END WEDGING & RESURFACING

MATCHLINE -L- STA. 22+00, SEE TMP-13

APPROVED: *Ben Schoenbauer*
 DATE: 1/29/2016



PHASE 4
 STEP 1

DOCUMENT NOT CONSIDERED FINAL UNLESS ALL SIGNATURES COMPLETED