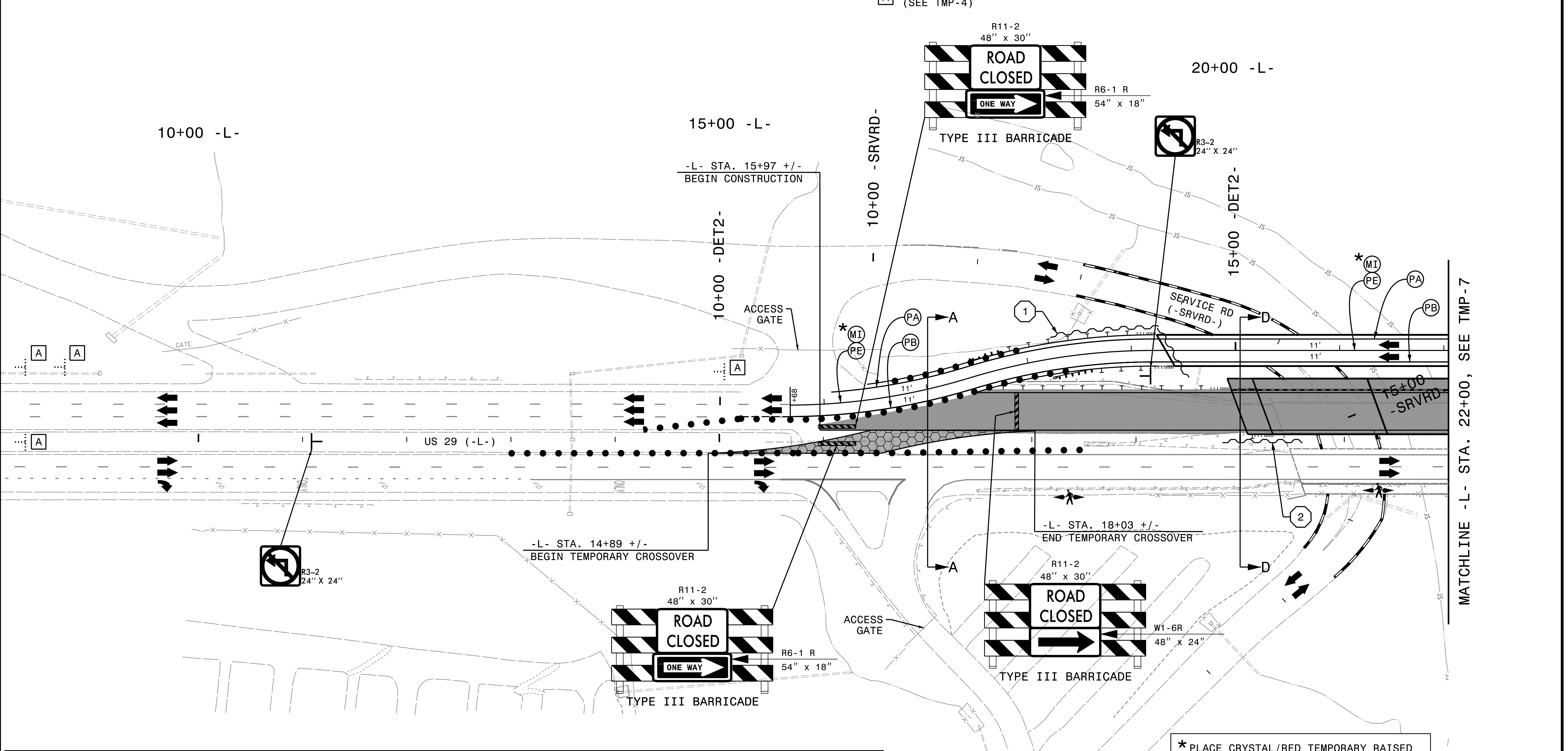
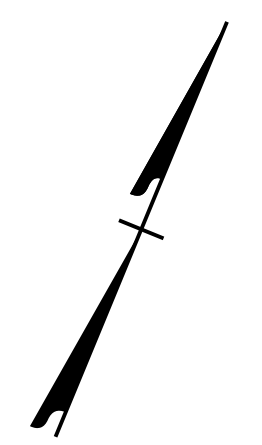
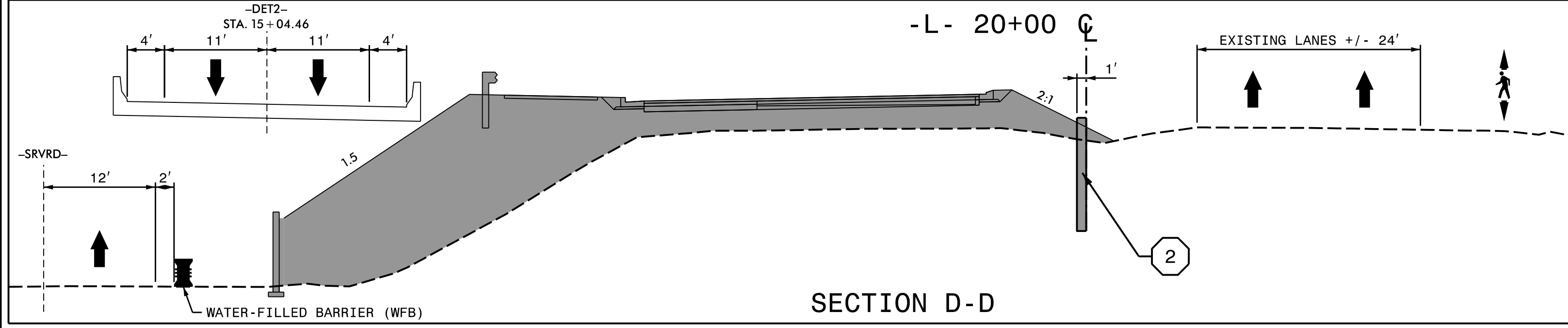


- ① TEMPORARY SHORING TO REMAIN FROM PHASE 1 (SEE TMP-4)
- ② TEMPORARY SHORING No.2  
QUANTITY = 732 SQ. FT.  
FROM -L- STA. 19+38 +/-, 1' LT  
TO -L- STA. 20+60 +/-, 1' LT
- SEE SHEET TMP-2A FOR TEMPORARY SHORING INFORMATION.
- A SIGNS TO REMAIN FROM PHASE 1 (SEE TMP-4)

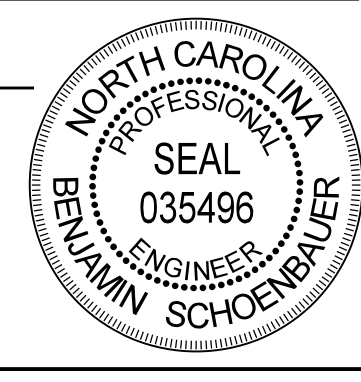


MATCHLINE -L- STA. 22+00, SEE TMP-7



\* PLACE CRYSTAL/RED TEMPORARY RAISED MARKERS (MI) @ 20' SPACING ALONG THE CENTER LINE OF THE DETOUR ALIGNMENT

APPROVED: *Ben Schoenbauer*  
 DATE: 1/29/2016



**DOCUMENT NOT CONSIDERED FINAL UNLESS ALL SIGNATURES COMPLETED**



PHASE 2

PLOT DRIVER: NCDOT\_pdf\_color\_eng\_50.pht  
 USER: CHARNDEN  
 DATE: 1/29/2016  
 TIME: 9:42:51 AM  
 FILE: D:\V\WPAPP\TPO1\SouthEast\Tampa\Documents\000166\CON0079159\CON0104476\00000000272555\6.0.CAD\BIM\6.2.Work\_In\_Progress\TrafficControl\TCP\B-5123\_TC\_TMP\_06-Phase2-1.dgn