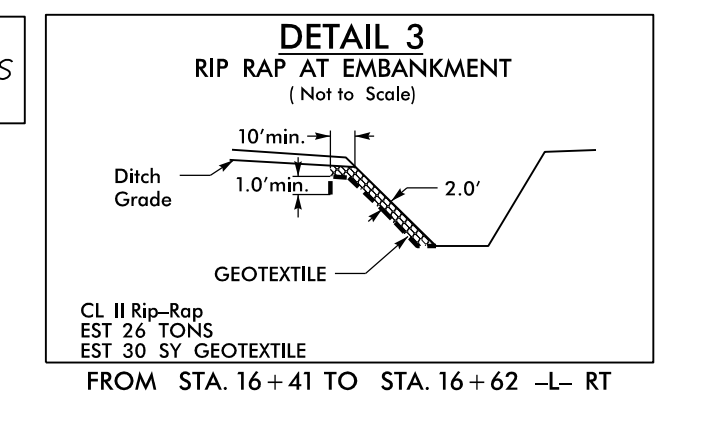
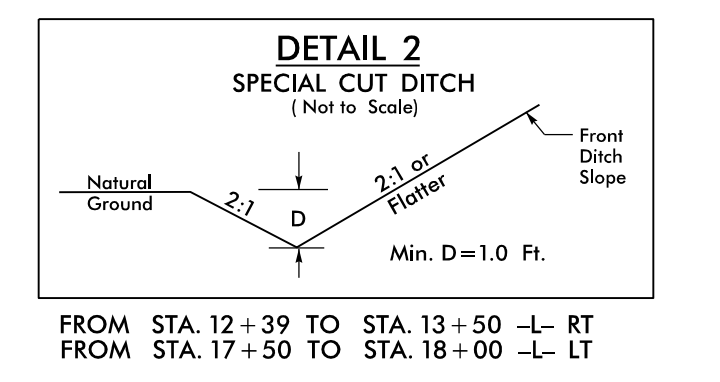
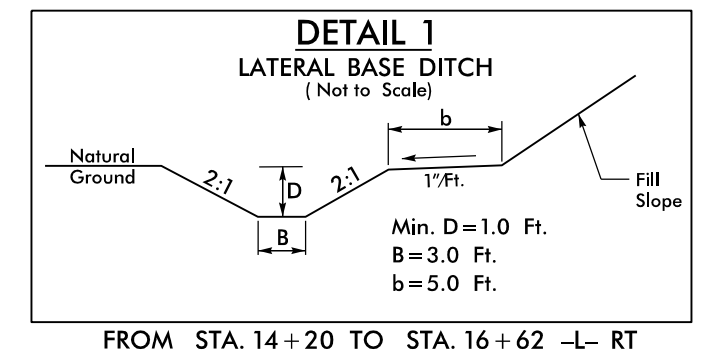
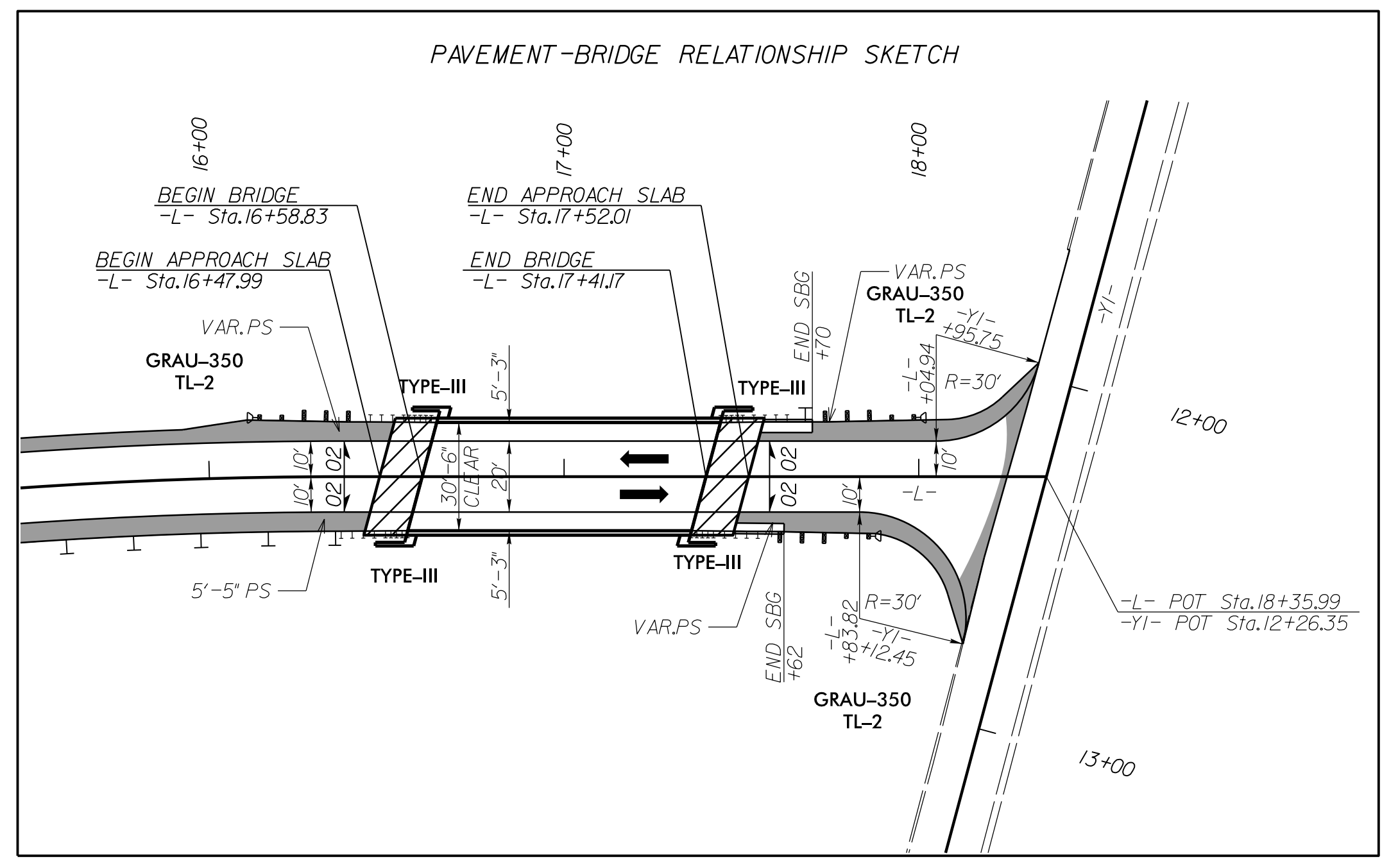
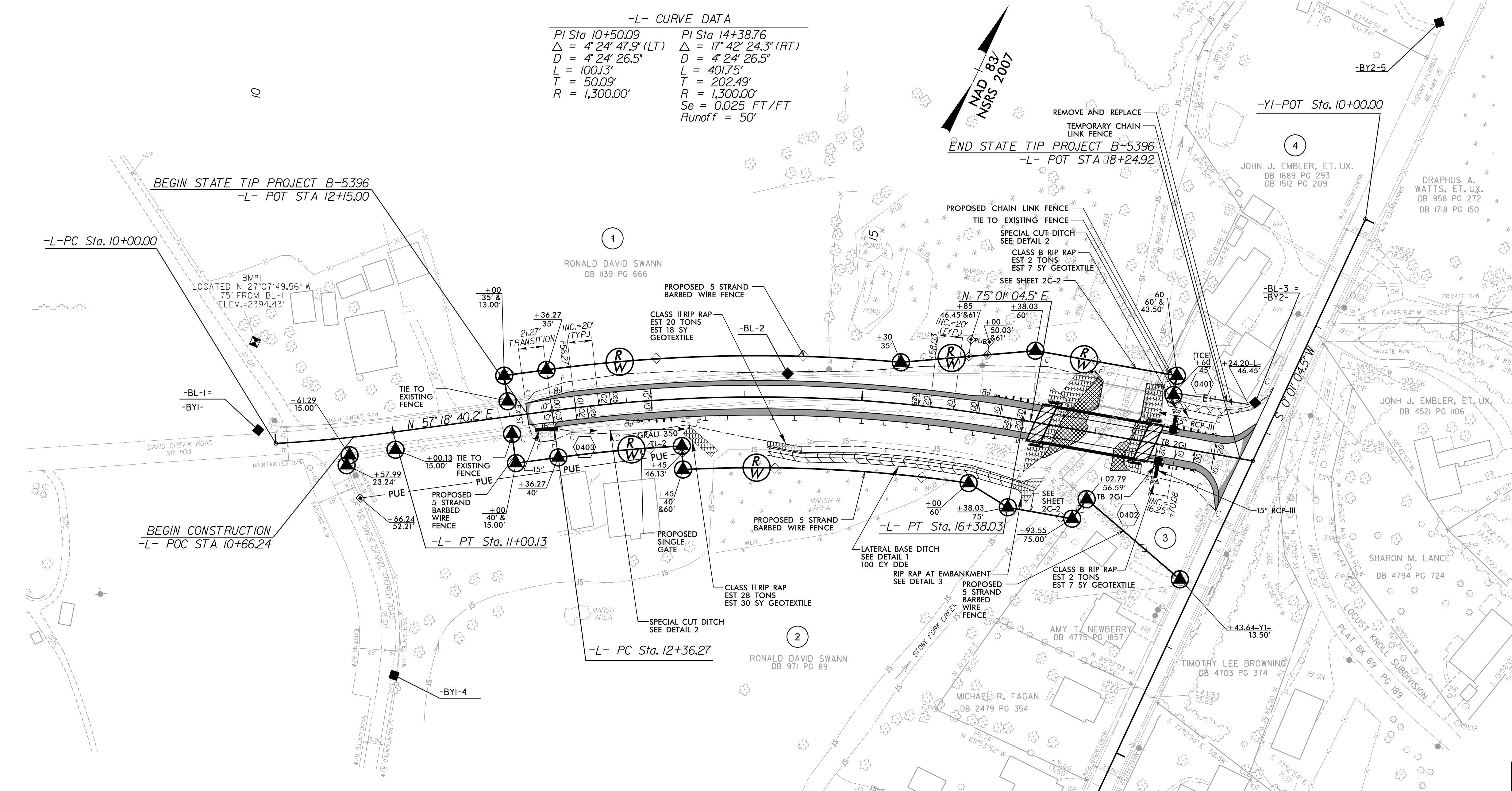


PROJECT REFERENCE NO. B-5396		SHEET NO. 4	
ROADWAY DESIGN ENGINEER		HYDRAULICS ENGINEER	
Bryan Douglas Saylor		Frank F. Fleming	
STEWART		ECOLOGICAL ENGINEERING	
DOCUMENT NOT CONSIDERED FINAL UNLESS ALL SIGNATURES COMPLETED			

-L- CURVE DATA

PI Sta 10+50.09	PI Sta 14+38.76
$\Delta = 4^{\circ}24'47.9"$ (LT)	$\Delta = 17^{\circ}42'24.3"$ (RT)
$D = 4^{\circ}24'26.5"$	$D = 4^{\circ}24'26.5"$
$L = 100.13'$	$L = 401.75'$
$T = 50.09'$	$T = 202.49'$
$R = 1,300.00'$	$R = 1,300.00'$
	$Se = 0.025$ FT/FT
	Runoff = 50'



END BENT EXCAVATION SEE STRUCTURE PLANS (STRUCTURE PAY ITEM)

3 RONALD DAVID SWANN DB 1276 PG 307

FOR -L- PROFILE, SEE SHEET 5

FOR STRUCTURE PLANS, SEE SHEET S-1 THRU S-18

REVISIONS

2/25/2016 B5396_P04_PSH_04.dgn