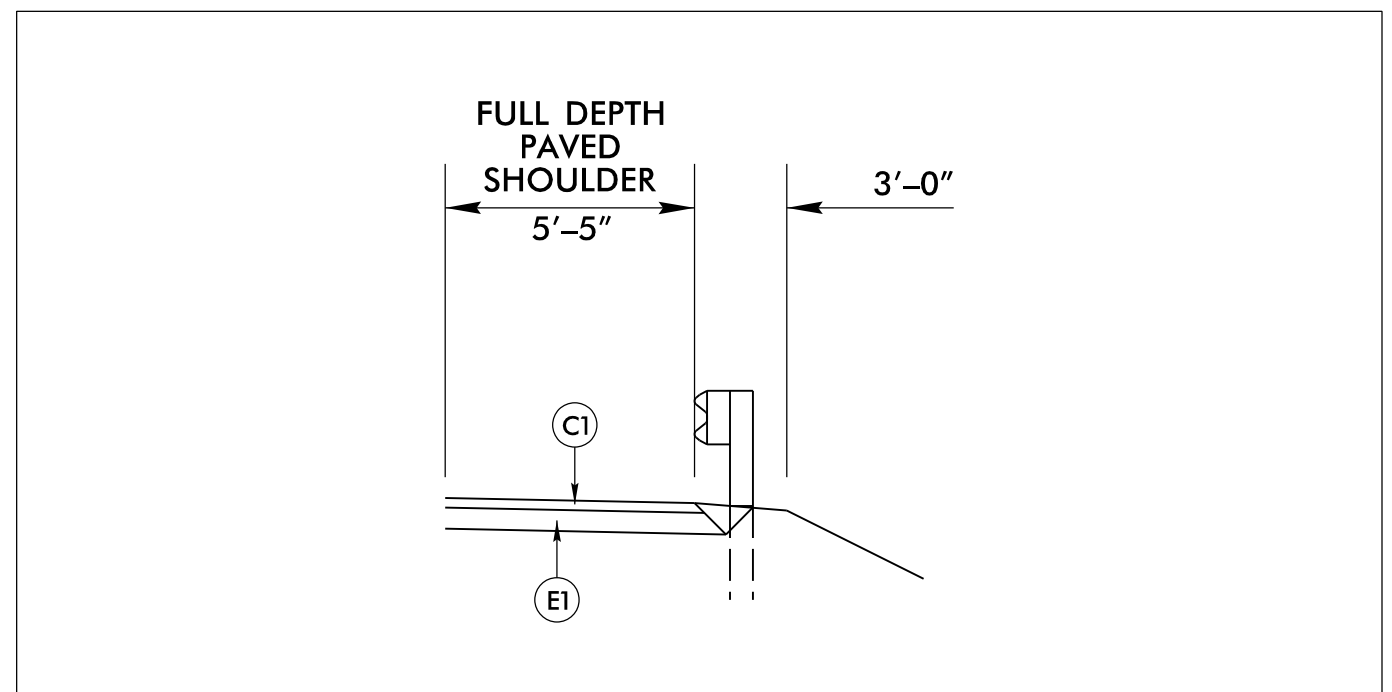
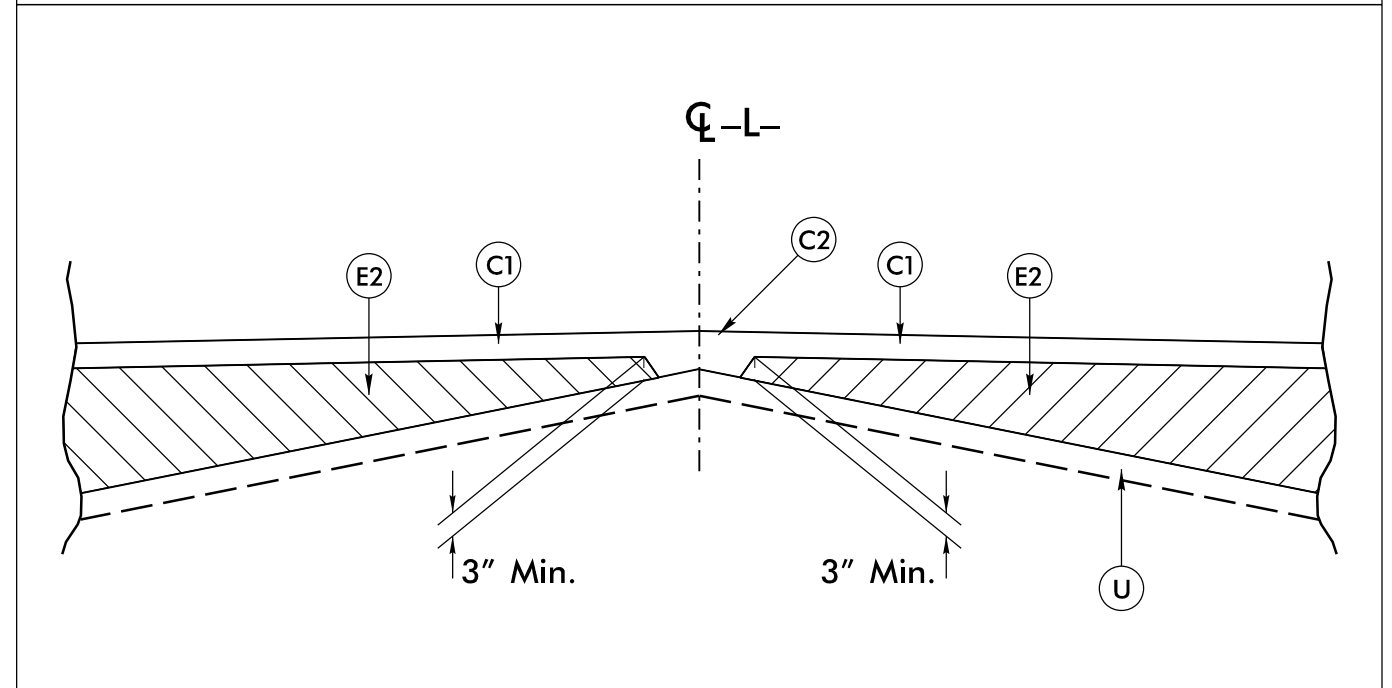


FINAL PAVEMENT SCHEDULE	
C1	PROP. APPROX. 3.0" ASPHALT CONCRETE SURFACE COURSE, TYPE SF9.5A, AT AN AVERAGE RATE OF 165 LBS. PER SQ. YD. IN EACH OF TWO LAYERS.
C2	PROP. VAR. DEPTH ASPHALT CONCRETE SURFACE COURSE, TYPE SF9.5A, AT AN AVERAGE RATE OF 110 LBS. PER SQ. YD. PER 1" DEPTH. TO BE PLACED IN LAYERS NOT TO EXCEED 1½" IN DEPTH.
E1	PROP. APPROX. 5.5" ASPHALT CONCRETE BASE COURSE, TYPE B25.0B, AT AN AVERAGE RATE OF 627 LBS. PER SQ. YD.
E2	PROP. VAR. DEPTH ASPHALT CONCRETE BASE COURSE, TYPE B25.0B, AT AN AVERAGE RATE OF 114 LBS. PER SQ. YD. PER 1" DEPTH. TO BE PLACED IN LAYERS NOT LESS THAN 3" IN DEPTH OR GREATER THAN 5½" IN DEPTH.
J1	PROP. VAR. DEPTH AGGREGATE BASE COURSE.
R	SHOULDER BERM GUTTER
T	EARTH MATERIAL
U	EXISTING PAVEMENT
W	ASPHALT WEDGING (SEE DETAIL)

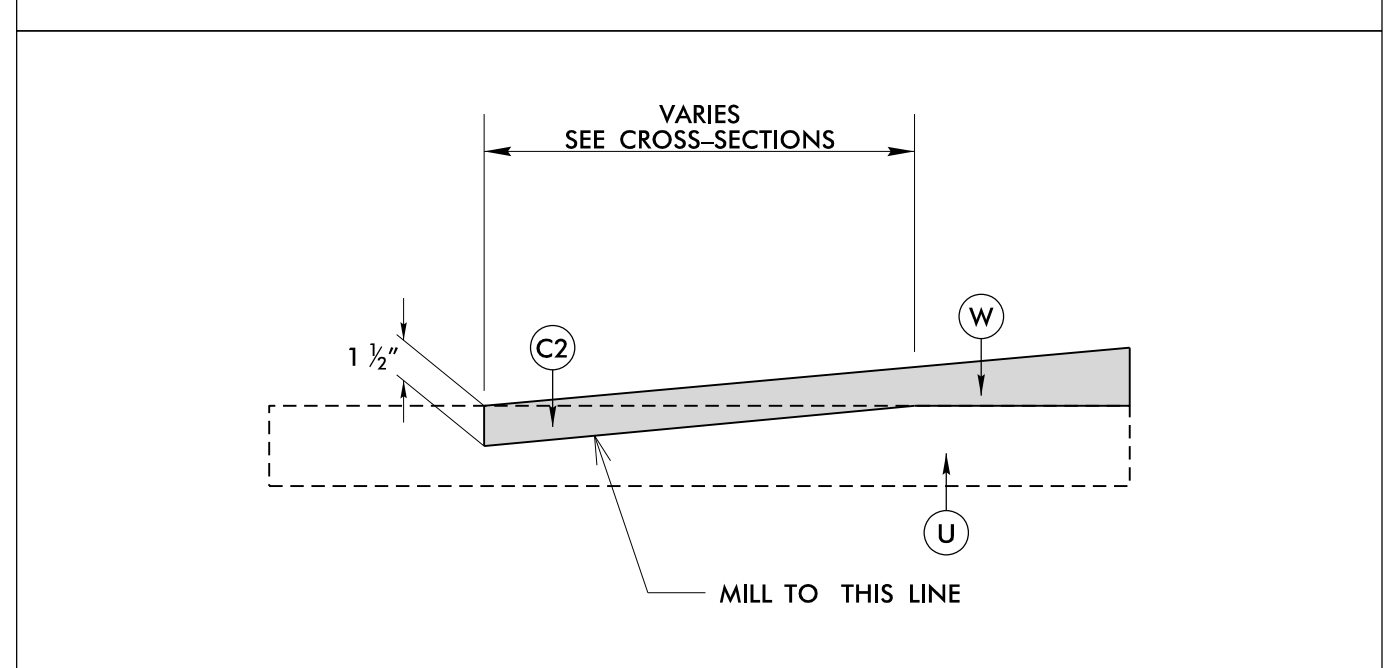
NOTE: PAVEMENT EDGE SLOPES ARE 1:1, UNLESS SHOWN OTHERWISE



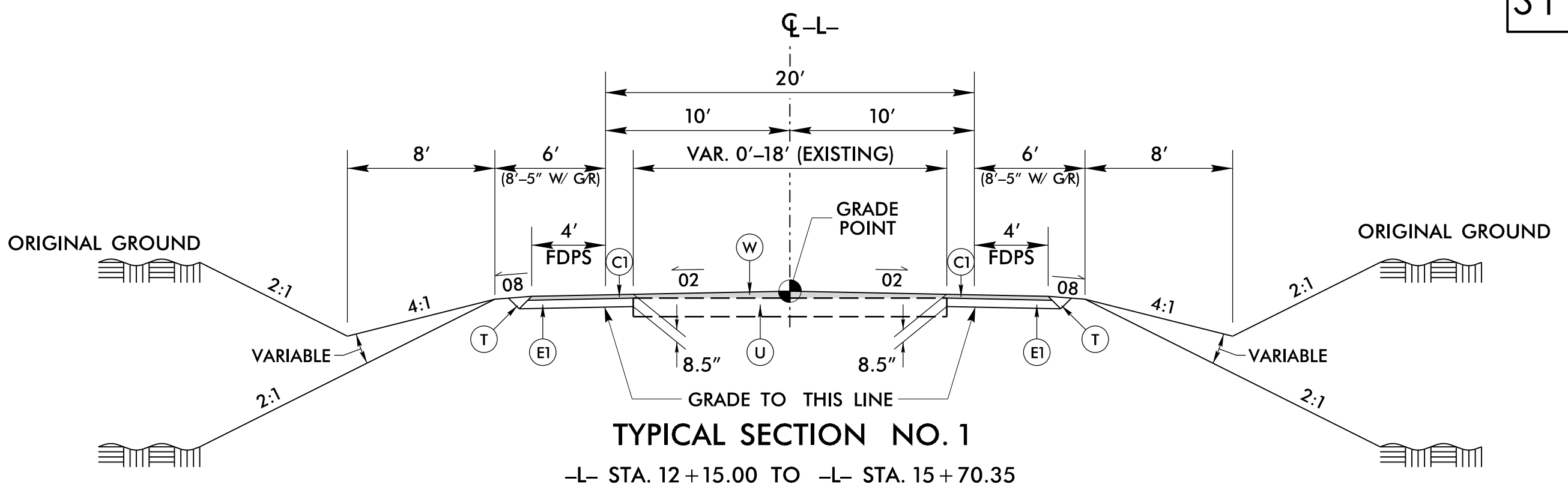
DETAIL SHOWING PAVING TO THE FACE OF GUARDRAIL



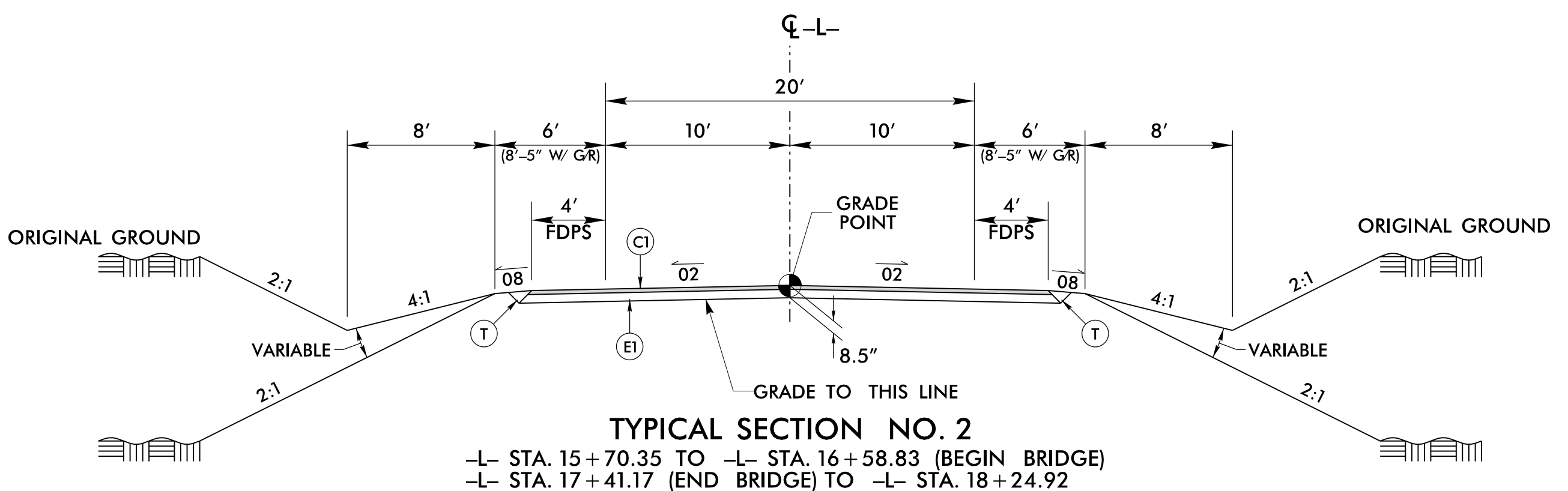
DETAIL SHOWING METHOD OF WEDGING



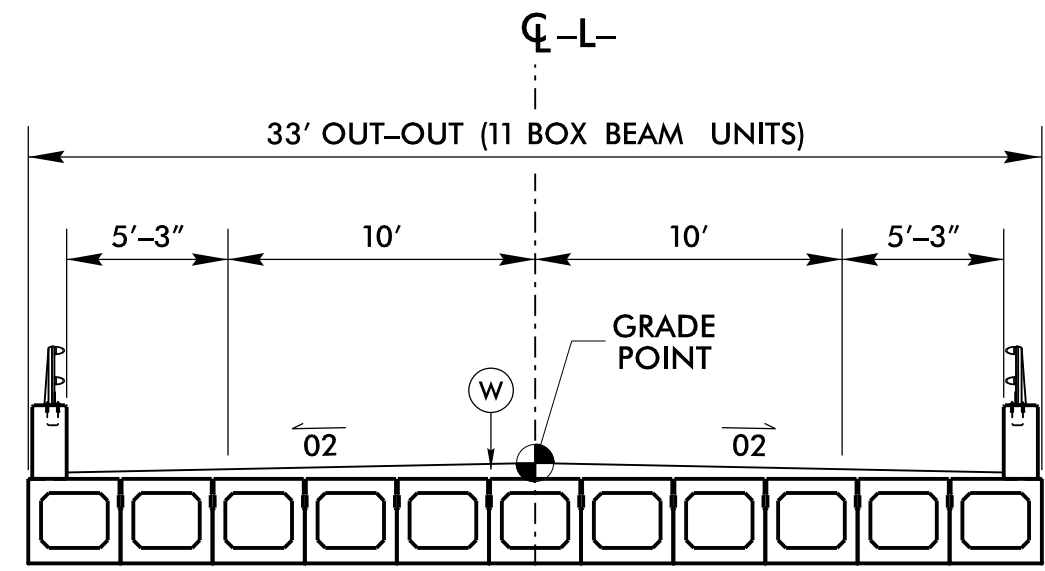
DETAIL SHOWING MILLED PAVEMENT TIE-IN



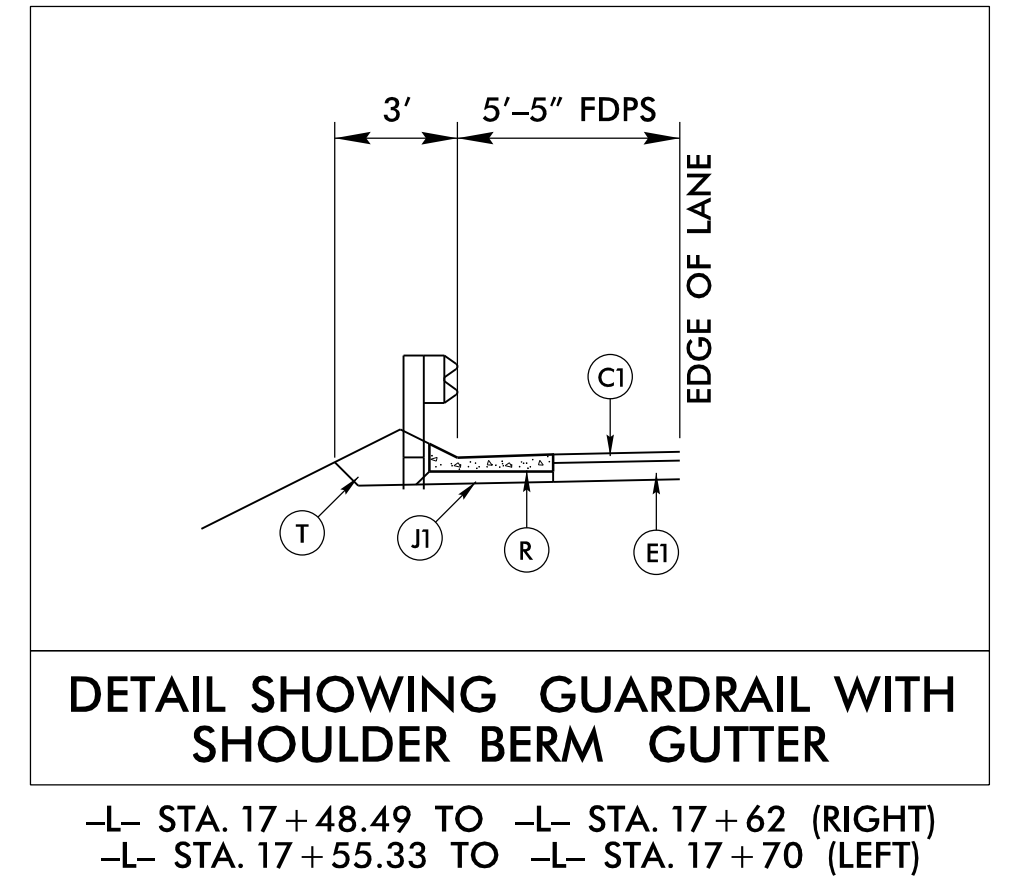
TYPICAL SECTION NO. 1
-L- STA. 12+15.00 TO -L- STA. 15+70.35



TYPICAL SECTION NO. 2
-L- STA. 15+70.35 TO -L- STA. 16+58.83 (BEGIN BRIDGE)
-L- STA. 17+41.17 (END BRIDGE) TO -L- STA. 18+24.92

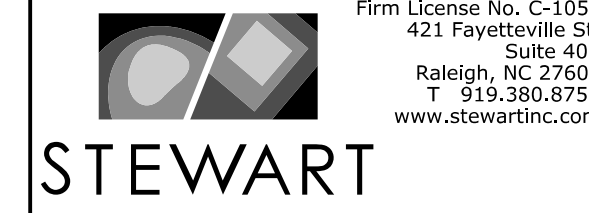


TYPICAL SECTION ON STRUCTURE
-L- STA. 16+58.83 TO -L- STA. 17+41.17



DETAIL SHOWING GUARDRAIL WITH SHOULDER BERM GUTTER

-L- STA. 17+48.49 TO -L- STA. 17+62 (RIGHT)
-L- STA. 17+55.33 TO -L- STA. 17+70 (LEFT)



Firm License No. C-1051
421 Fayetteville St.
Suite 400
Raleigh, NC 27601
T 919.380.8750
www.stewartinc.com

PROJECT REFERENCE NO. B-5396	SHEET NO. 2A-1
ROADWAY DESIGN ENGINEER Bryan Douglas Saylor	PAVEMENT DESIGN ENGINEER Clark Morrison
PROFESSIONAL SEAL SEAL 030984 BRYAN DOUGLAS SAYLOR 2/29/2016	PROFESSIONAL SEAL SEAL 22896 CLARK MORRISON 2/29/2016
DOCUMENT NOT CONSIDERED FINAL UNLESS ALL SIGNATURES COMPLETED	