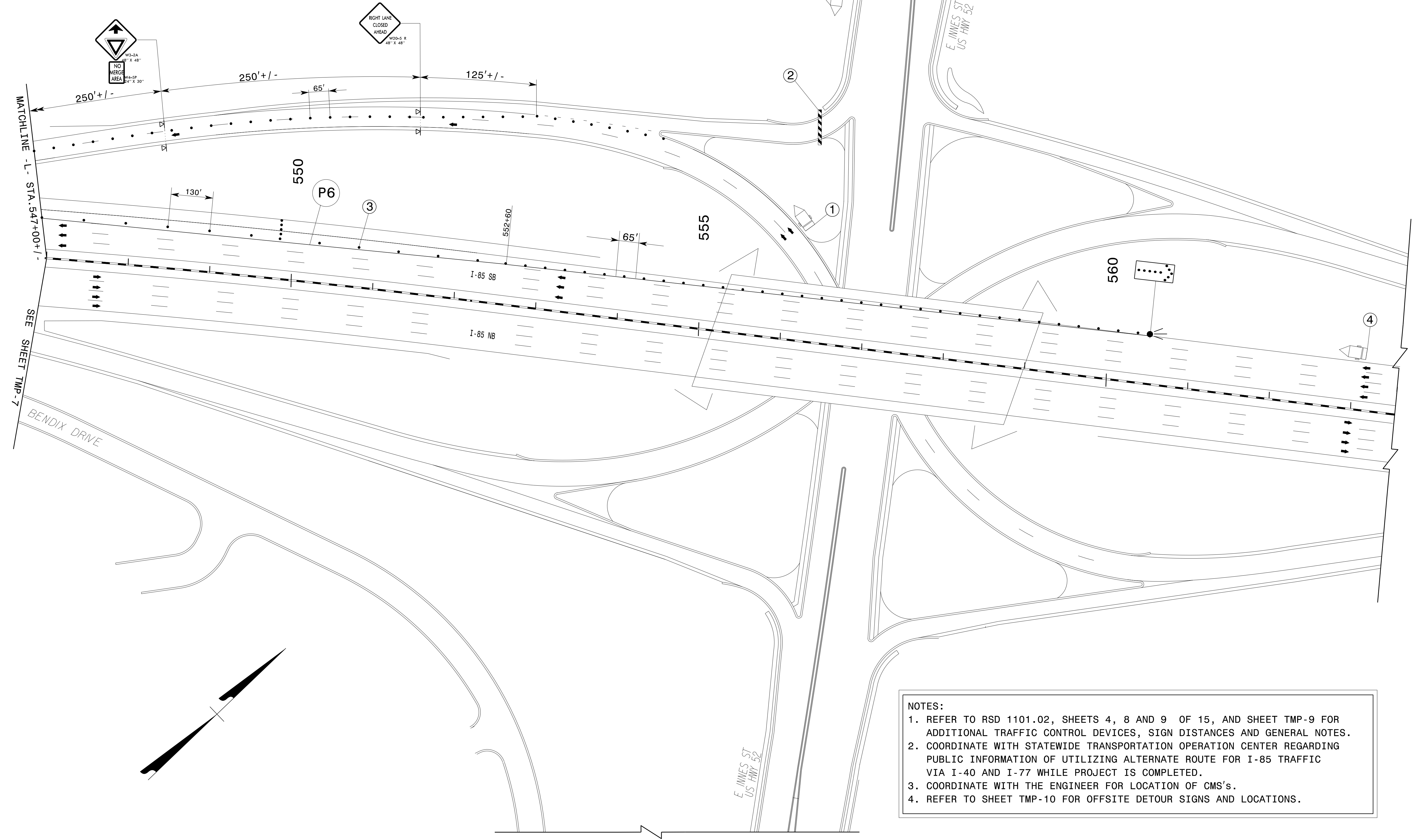


REFER TO SHEET TMP-10
FOR CMS LOCATION

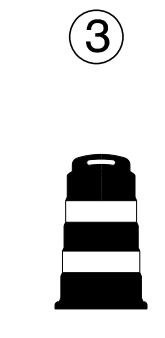
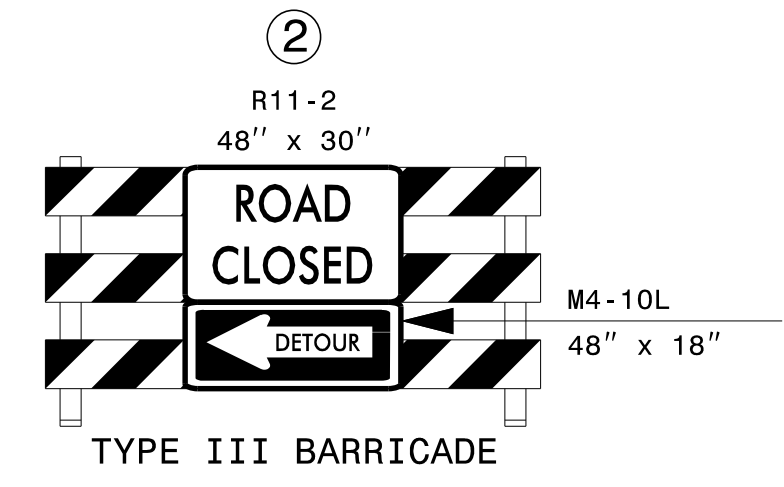


- NOTES:
1. REFER TO RSD 1101.02, SHEETS 4, 8 AND 9 OF 15, AND SHEET TMP-9 FOR ADDITIONAL TRAFFIC CONTROL DEVICES, SIGN DISTANCES AND GENERAL NOTES.
 2. COORDINATE WITH STATEWIDE TRANSPORTATION OPERATION CENTER REGARDING PUBLIC INFORMATION OF UTILIZING ALTERNATE ROUTE FOR I-85 TRAFFIC VIA I-40 AND I-77 WHILE PROJECT IS COMPLETED.
 3. COORDINATE WITH THE ENGINEER FOR LOCATION OF CMS's.
 4. REFER TO SHEET TMP-10 FOR OFFSITE DETOUR SIGNS AND LOCATIONS.

①

MESSAGE NO. 1	MESSAGE NO. 2
RIGHT LANE CLOSED	MERGE LEFT

CHANGEABLE MESSAGE SIGN



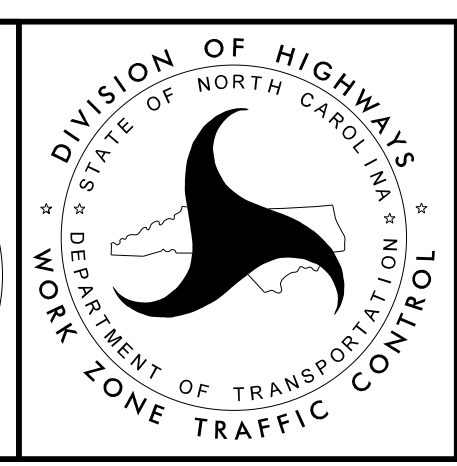
④

MESSAGE NO. 1	MESSAGE NO. 2
TRAFFIC MERGING FROM RT	XX FT AHEAD

CHANGEABLE MESSAGE SIGN

APPROVED: *David Bisette*

DATE: 12/17/2015



I-85 SB
TRIPLE LANE CLOSURES
DETAIL 3

12/16/2015
 P:\Projects\I-85\TrafficControl\TCN\5505_10_TMP_8.dgn
 User:slvudm1