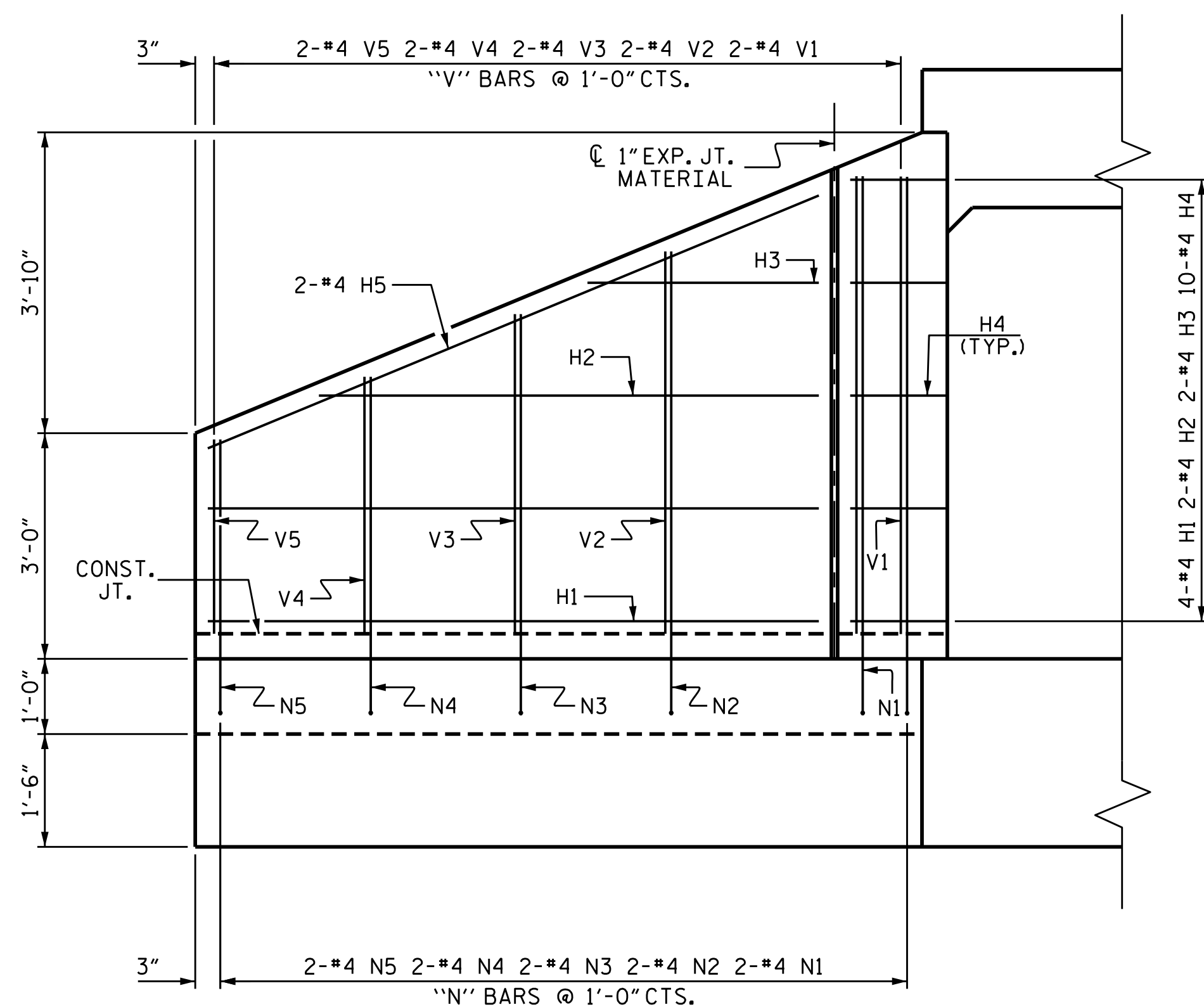


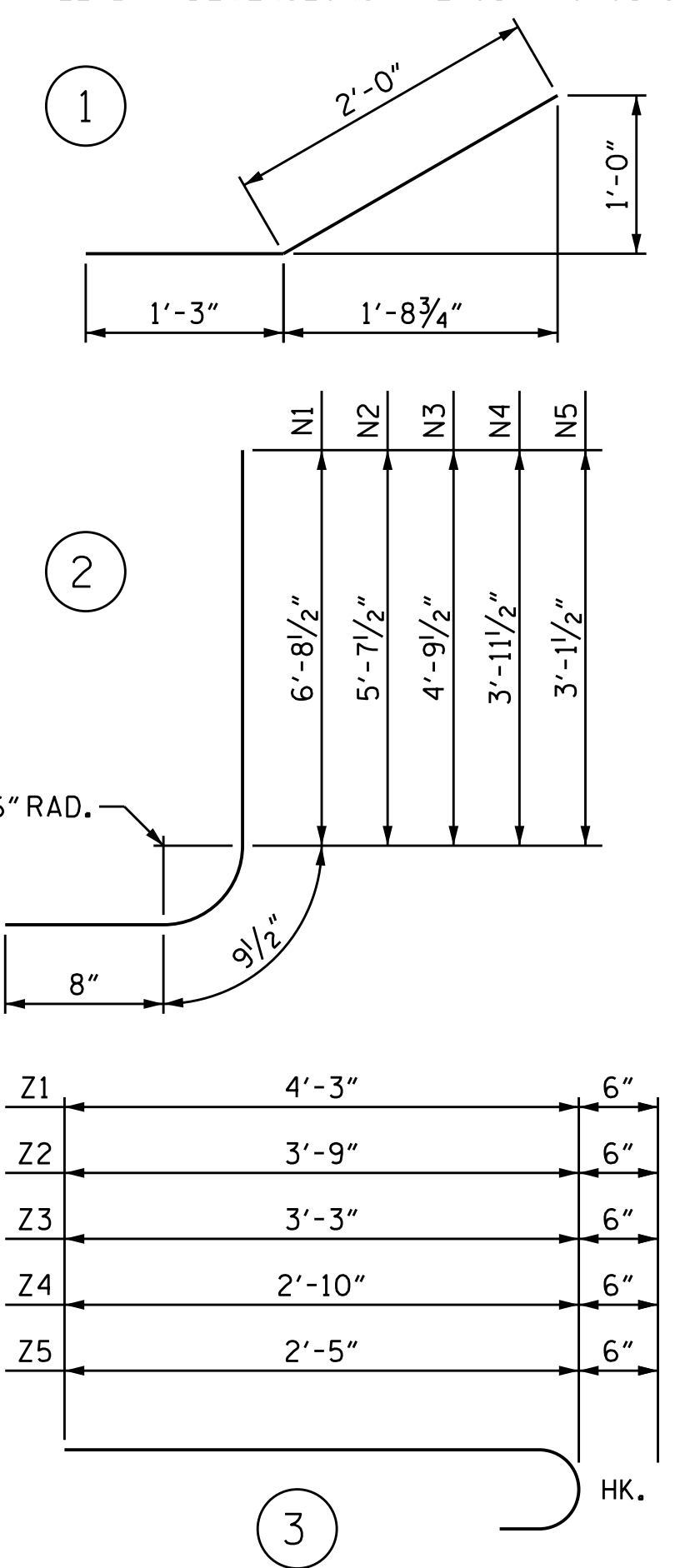
PLAN



ELEVATION

BAR TYPES

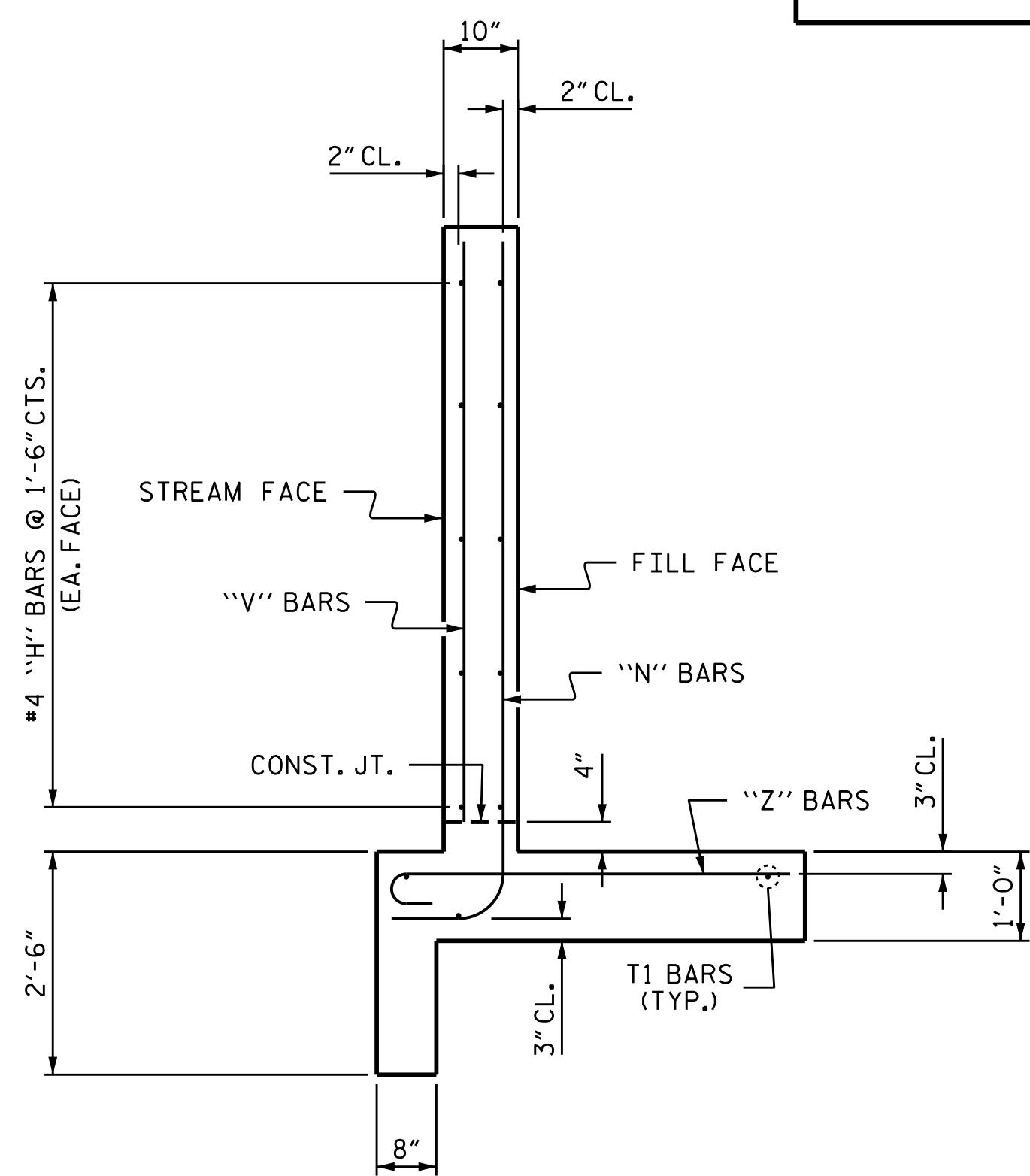
ALL BAR DIMENSIONS ARE OUT TO OUT.



BILL OF MATERIAL

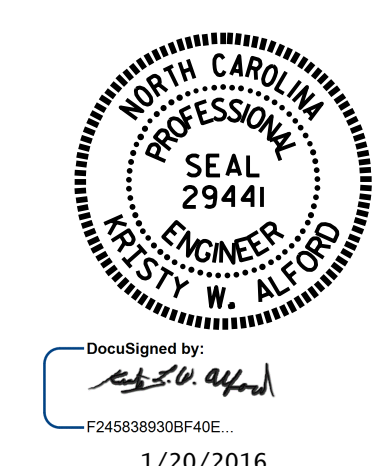
BAR	NO.	SIZE	TYPE	LENGTH	WEIGHT
H1	16	#4	STR	8'-1"	86
H2	8	#4	STR	6'-8"	36
H3	8	#4	STR	3'-1"	16
H4	40	#4	1	3'-3"	87
H5	8	#4	STR	8'-9"	47
N1	8	#4	2	8'-2"	44
N2	8	#4	2	7'-1"	38
N3	8	#4	2	6'-3"	33
N4	8	#4	2	5'-5"	29
N5	8	#4	2	4'-7"	24
T1	12	#5	STR	10'-0"	125
V1	8	#4	STR	6'-1"	33
V2	8	#4	STR	5'-1"	27
V3	8	#4	STR	4'-3"	23
V4	8	#4	STR	3'-5"	18
V5	8	#4	STR	2'-7"	14
Z1	8	#4	3	4'-9"	25
Z2	12	#4	3	4'-3"	34
Z3	8	#4	3	3'-9"	20
Z4	8	#4	3	3'-4"	18
Z5	8	#4	3	2'-11"	16

REINFORCING STEEL FOR 4 WINGS	793	LBS
CLASS A CONCRETE		
4 WINGS	13.8	CY
2 HEADWALLS	1.5	CY
END CURTAIN WALLS	1.7	CY
TOTAL	17.0	CY



TYPICAL WING SECTION

PROJECT NO. B-5128
 RANDOLPH COUNTY
 STATION: 13+78.00 -L-



STATE OF NORTH CAROLINA
 DEPARTMENT OF TRANSPORTATION
 RALEIGH
STANDARD WINGS FOR CONCRETE BOX CULVERT
 H = 6'-0" SLOPE = 2:1
 90° SKEW

ASSEMBLED BY: *William F. Parker* DATE: 10/20/14
 CHECKED BY: T.L. AVERETTE DATE: 1/20/15
 DRAWN BY: CCJ 10/99
 CHECKED BY: RWW 03/00

DOCUMENT NOT CONSIDERED FINAL UNLESS ALL SIGNATURES COMPLETED

REVISIONS						SHEET NO.
NO.	BY:	DATE:	NO.	BY:	DATE:	C-3
1			3			TOTAL SHEETS 4
2			4			