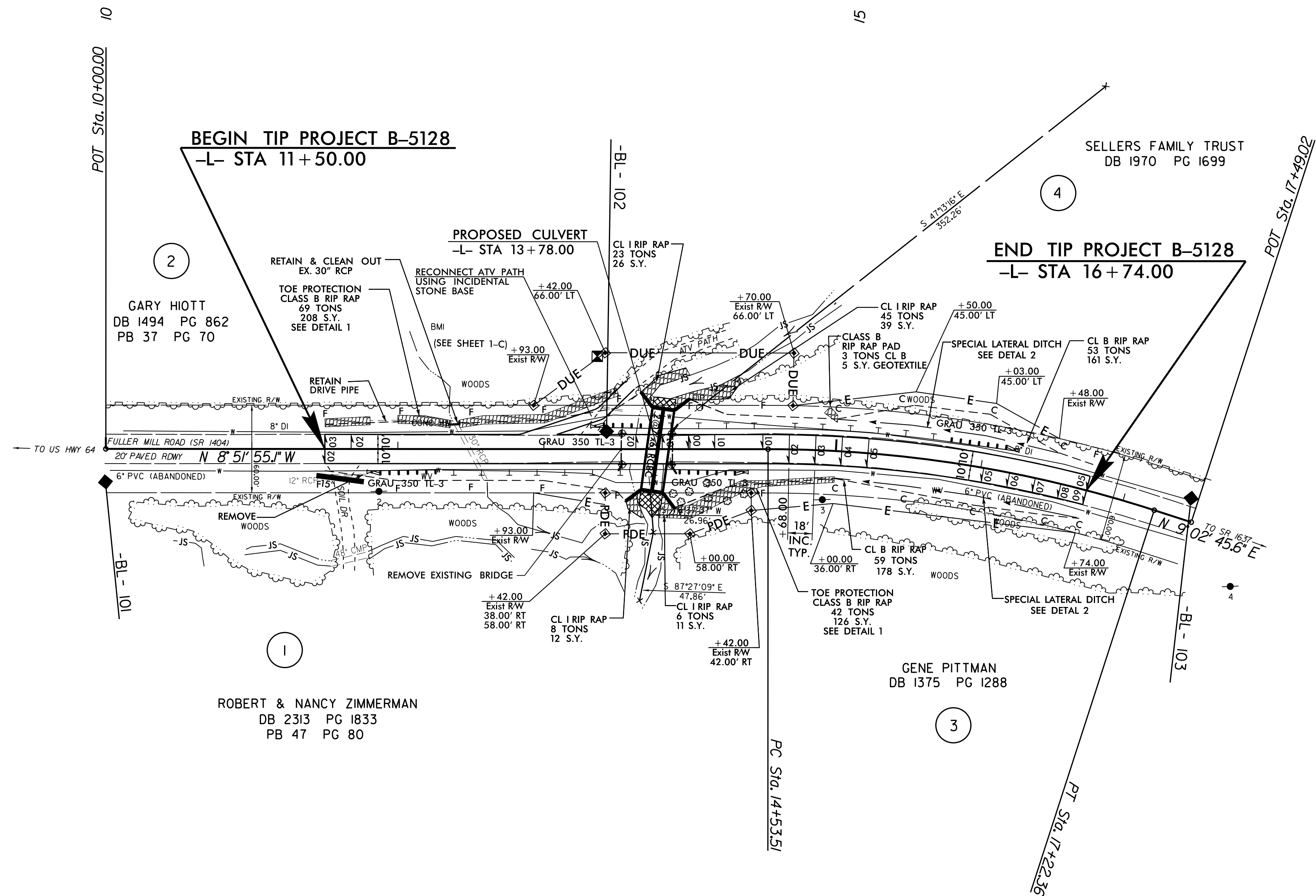
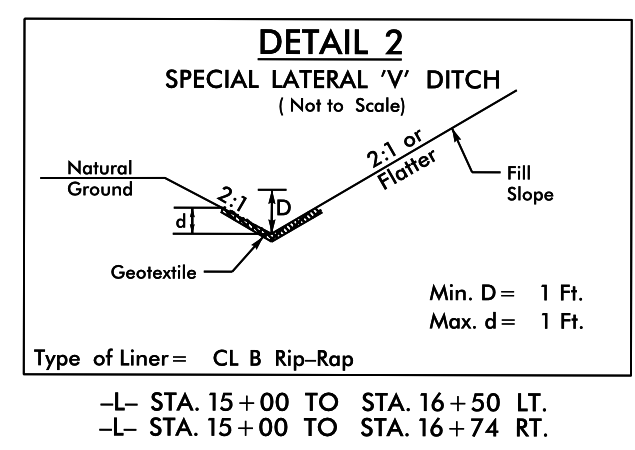
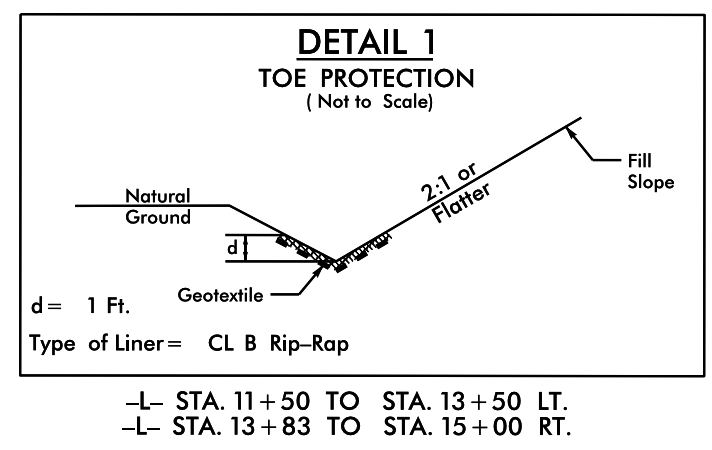


NAD 83 / CORS 96



REVISIONS

-L-
 PI Sta 15+89.04
 $\Delta = 17^{\circ} 54' 40.7''$ (RT)
 D = 6' 39" 44.3"
 L = 268.85'
 T = 135.53'
 R = 860.00'
 SE = 05
 RO = 90.00'

NOTE: SEE SHEET NO. 5 FOR -L- PROFILE
 NOTE: SEE SHEET C-1 THRU C-4 FOR CULVERT PLANS

8/17/99
 10 DEC 2015 14:36 \\s\p\B5128_Rdy.pst-4.dgn
 3:38:50 PM
 3:38:50 PM