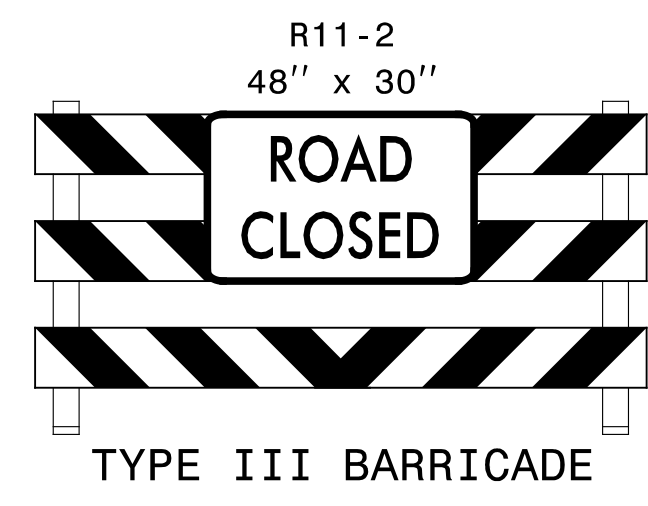


\*USE LAW ENFORCEMENT TO ENSURE TRAFFIC QUEUE DOES NOT DEVELOP ON OFF-RAMP



(A)

| MESSAGE NO. 1       | MESSAGE NO. 2      |
|---------------------|--------------------|
| I-95 NB RAMP CLOSED | DETOUR USE I-95 SB |

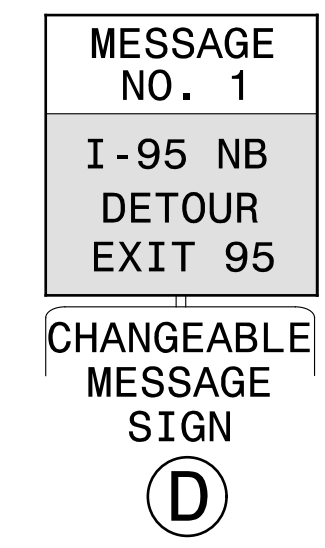
CHANGEABLE MESSAGE SIGN

(B)

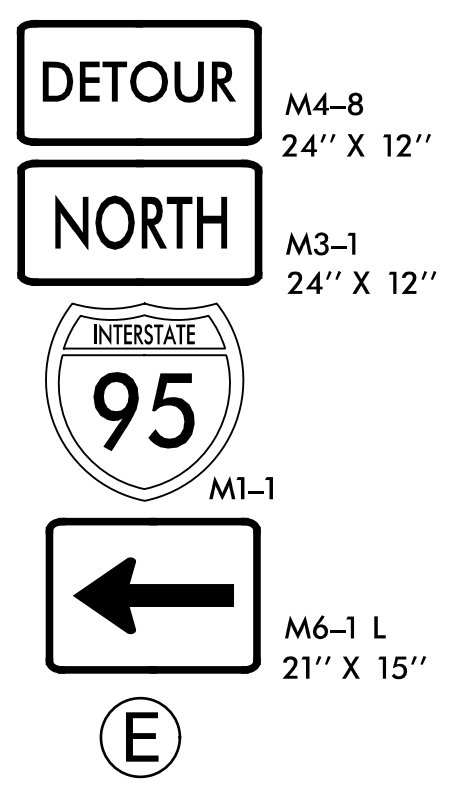
| MESSAGE NO. 1       | MESSAGE NO. 2          |
|---------------------|------------------------|
| I-95 NB RAMP CLOSED | I-95 NB DETOUR NEXT RT |

CHANGEABLE MESSAGE SIGN

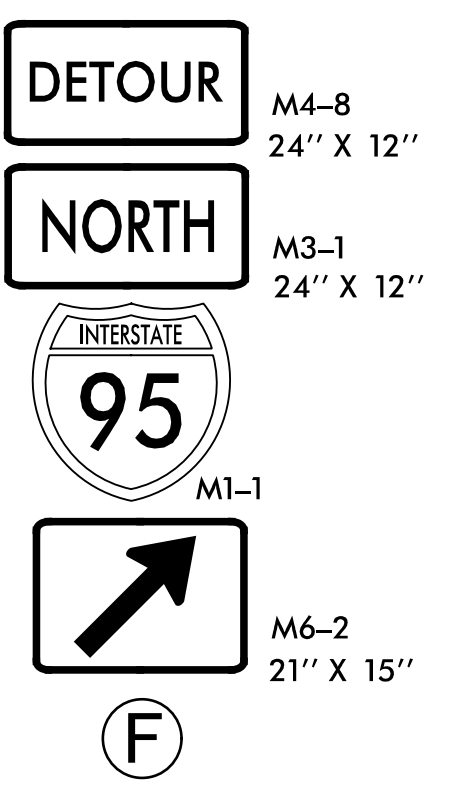
(C)



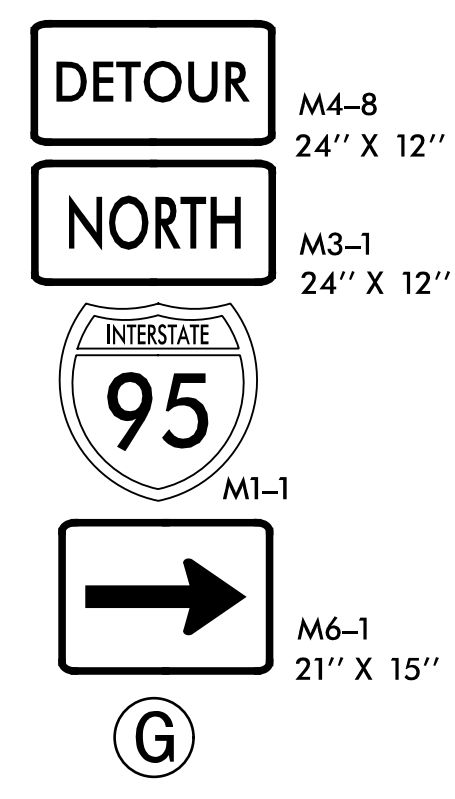
(D)



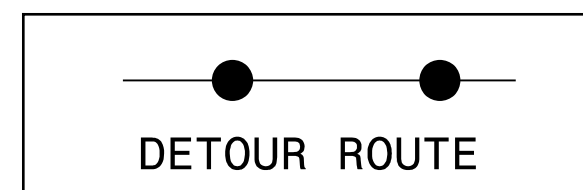
(E)



(F)



(G)



DETOUR ROUTE

USE IN CONJUNCTION WITH RSD 1101.02, SHEET 4 AND TMP-2A

DOCUMENT NOT CONSIDERED FINAL UNLESS ALL SIGNATURES COMPLETED

NOTE:  
 CLOSE EXIT 97 FROM US 70 TO I-95 NB USING DRUMS SPACED 10' ON CENTER. DETOUR TRAFFIC ALONG I-95 SB TO EXIT 95 E. MARKET ST (US 70 BUS), THEN BACK ON I-95 NB. COMPLETE MILLING, RESURFACING AND PAVEMENT MARKING ON RAMP AND REOPEN TO TRAFFIC.

APPROVED: *Michael T. Rzepka* DATE: 12/1/2015

SEAL:

DIVISION OF HIGHWAYS  
 STATE OF NORTH CAROLINA  
 DEPARTMENT OF TRANSPORTATION  
 WORK ZONE TRAFFIC CONTROL

DETOUR FOR EXIT 97  
 US 70 E TO I-95 NB

12/1/2015  
 R:\15784\_tmp\_det\_psh\_17.dgn  
 ICA Engineering