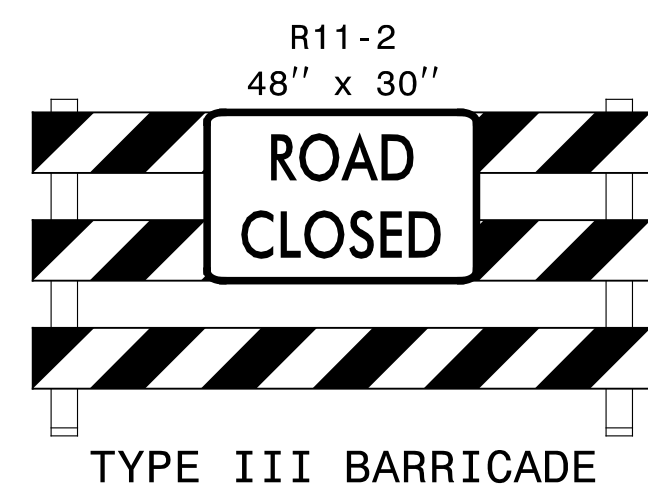
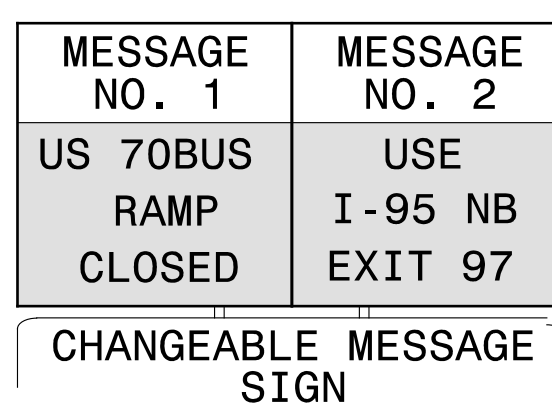


AS APPROPRIATE CLOSE MALLARD RD. ACCESS TO OFF-RAMP AND US 70BUS. DIRECT MALLARD RD. TRAFFIC ACROSS OFF-RAMP ONTO I-95 NB ON-RAMP TO FOLLOW SAME DETOUR.

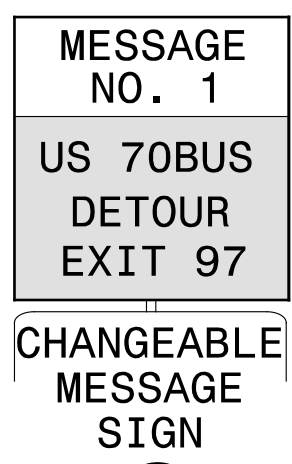
*USE LAW ENFORCEMENT TO ENSURE TRAFFIC QUEUE DOES NOT DEVELOP ON OFF-RAMP



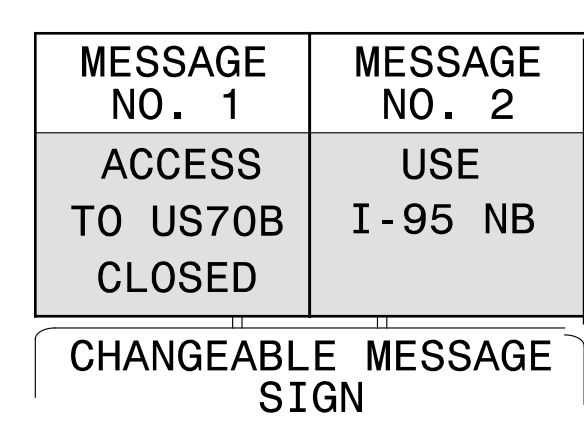
(A)



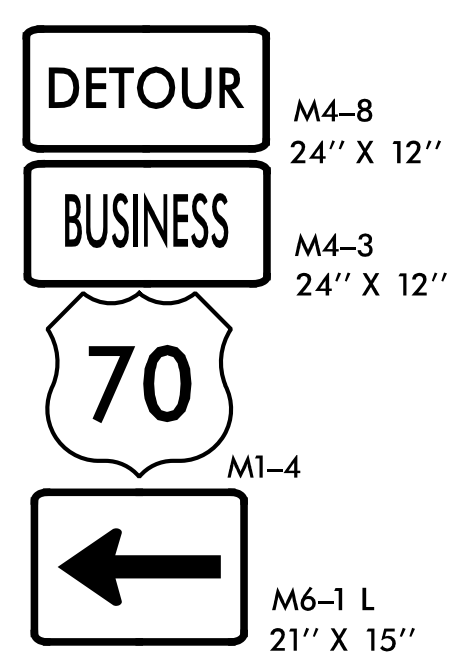
(B)



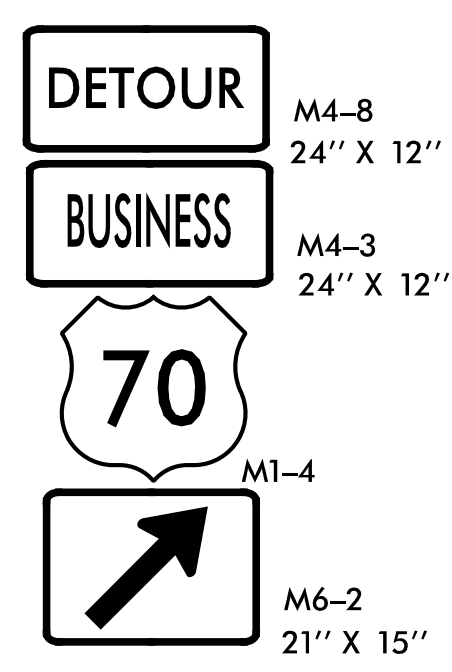
(C)



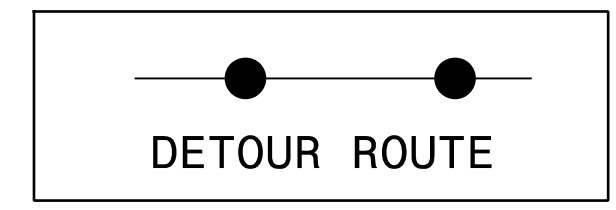
(D)



(E)



(F)



USE IN CONJUNCTION WITH RSD 1101.02, SHEET 4 AND TMP-2A

DOCUMENT NOT CONSIDERED FINAL UNLESS ALL SIGNATURES COMPLETED

NOTE:
 CLOSE EXIT 95 OFF-RAMP I-95 NB TO E. MARKET ST (US 70 BUS) USING DRUMS SPACED 10' ON CENTER. DETOUR TRAFFIC ALONG I-95 NB TO EXIT 97 US 70, THEN BACK ON I-95 SB TO EXIT 95. COMPLETE MILLING, RESURFACING AND PAVEMENT MARKING ON RAMP AND REOPEN TO TRAFFIC.

APPROVED: *Michael T. Ryopka* DATE: 12/1/2015

SEAL
 NORTH CAROLINA PROFESSIONAL ENGINEER
 SEAL 15876
 MICHAEL T. RYOPKA

DIVISION OF HIGHWAYS
 NORTH CAROLINA
 DEPARTMENT OF TRANSPORTATION
 WORK ZONE TRAFFIC CONTROL

DETOUR FOR EXIT 95
 I-95 NB TO
 E MARKET ST
 (US 70 BUS)