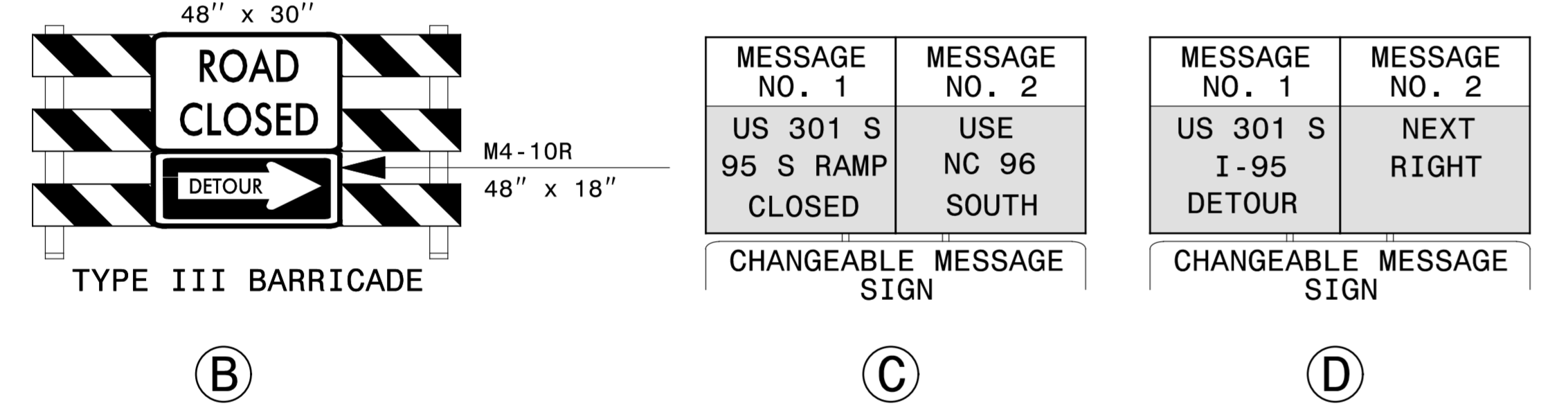
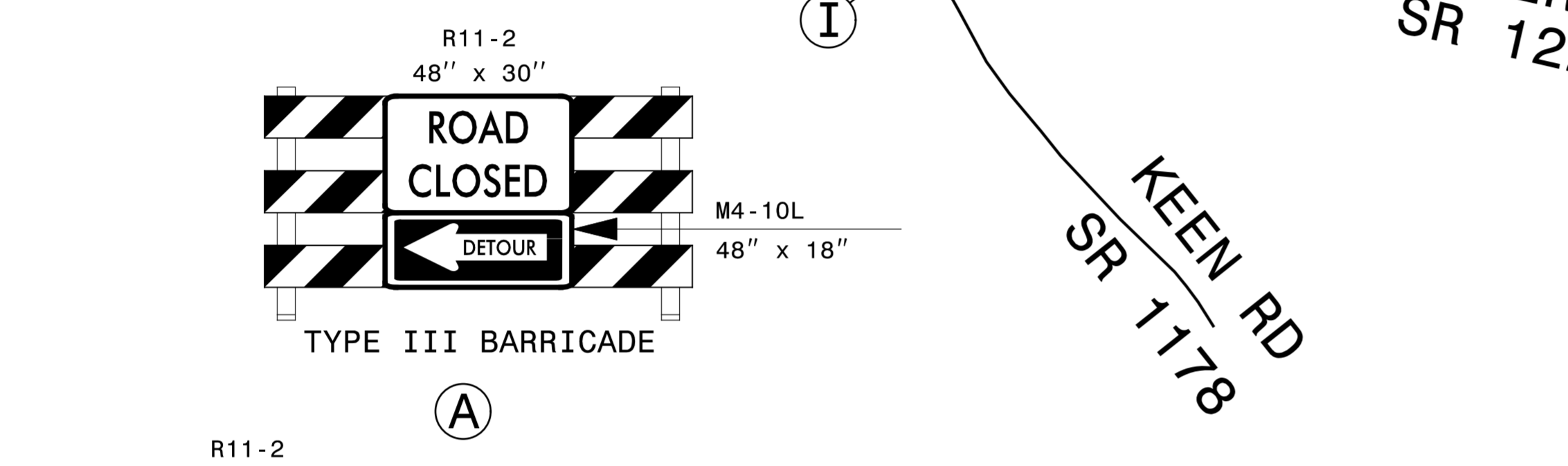
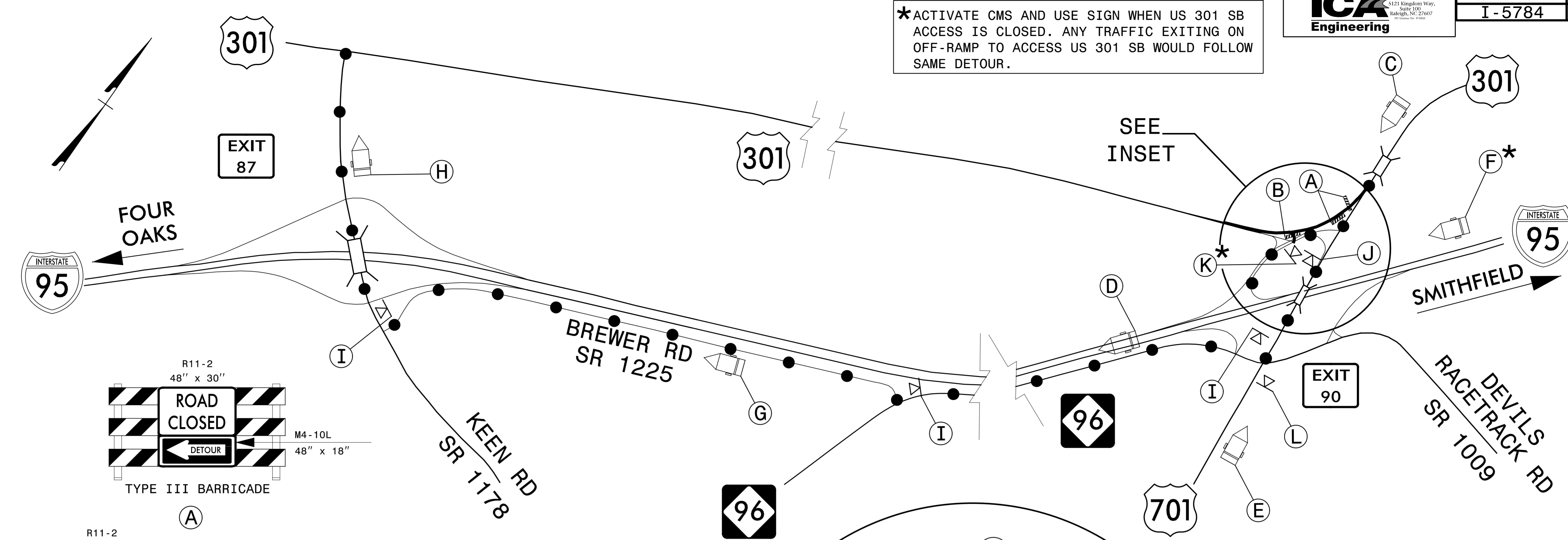
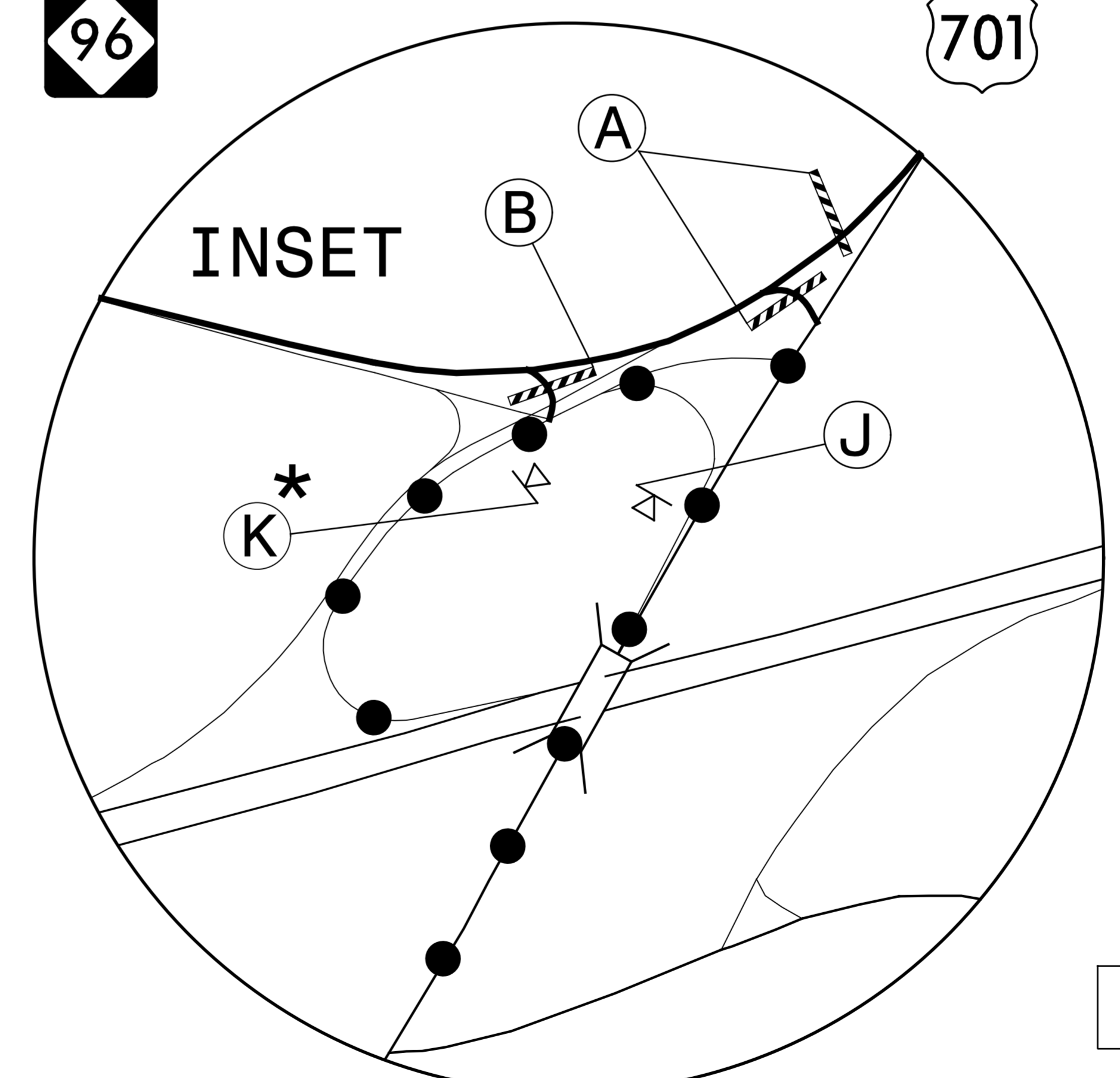
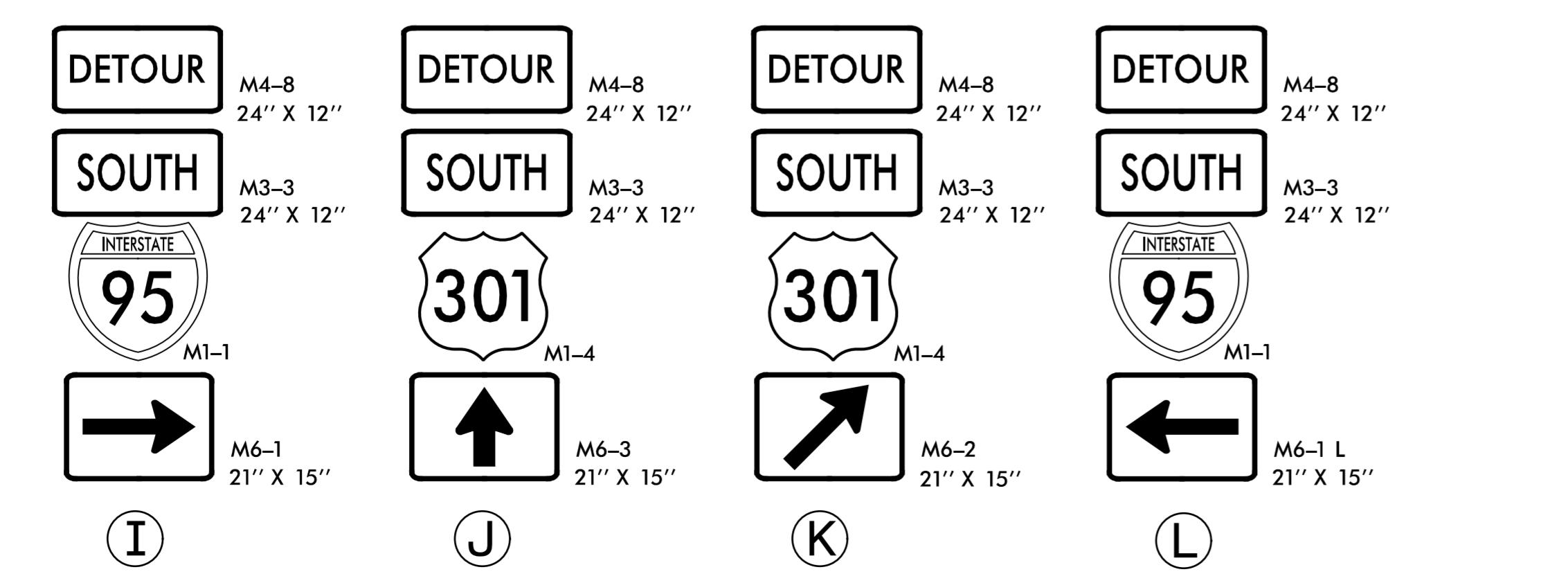


\*ACTIVATE CMS AND USE SIGN WHEN US 301 SB ACCESS IS CLOSED. ANY TRAFFIC EXITING ON OFF-RAMP TO ACCESS US 301 SB WOULD FOLLOW SAME DETOUR.



MESSAGE NO. 1 US 301 S 95 S RAMP CLOSED	MESSAGE NO. 2 USE NC 96 SOUTH	MESSAGE NO. 1 US 301 S I-95 NB DETOUR	MESSAGE NO. 2 NEXT RIGHT
CHANGEABLE MESSAGE SIGN		CHANGEABLE MESSAGE SIGN	

MESSAGE NO. 1 US 301 S 95 S RAMP CLOSED	MESSAGE NO. 2 USE NC 96 NXT LEFT	MESSAGE NO. 1 US 301 S ACCESS CLOSED	MESSAGE NO. 2 FOLLOW NC 96 S	MESSAGE NO. 1 US 301 S I-95 NB DETOUR	MESSAGE NO. 1 US 301 S DETOUR STRAIGHT
CHANGEABLE MESSAGE SIGN		CHANGEABLE MESSAGE SIGN		CHANGEABLE MESSAGE SIGN	



NOTE:  
 CLOSE US 301 SB USING DRUMS SPACED 10' ON CENTER. DETOUR TRAFFIC ALONG US 701 TO NC 96 THEN ONTO BREWER RD (SR 1225), THEN ON KEEN RD TO US 301. COMPLETE MILLING, RESURFACING AND PAVEMENT MARKING ON RAMP AND REOPEN TO TRAFFIC.

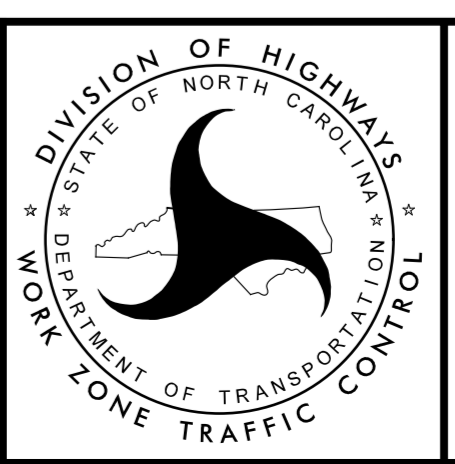
● — ● DETOUR ROUTE FOR US 301 SB & I-95 NB ON-RAMP

USE IN CONJUNCTION WITH RSD 1101.02, SHEET 4 AND TMP-2A

DOCUMENT NOT CONSIDERED FINAL UNLESS ALL SIGNATURES COMPLETED

APPROVED: *Michael T. Ryzko* DATE: 12/1/2015

SEAL  
 NORTH CAROLINA PROFESSIONAL ENGINEER  
 MICHAEL T. RYZKO  
 15876



DETOUR FOR US 301 SB & I-95 NB ON-RAMP