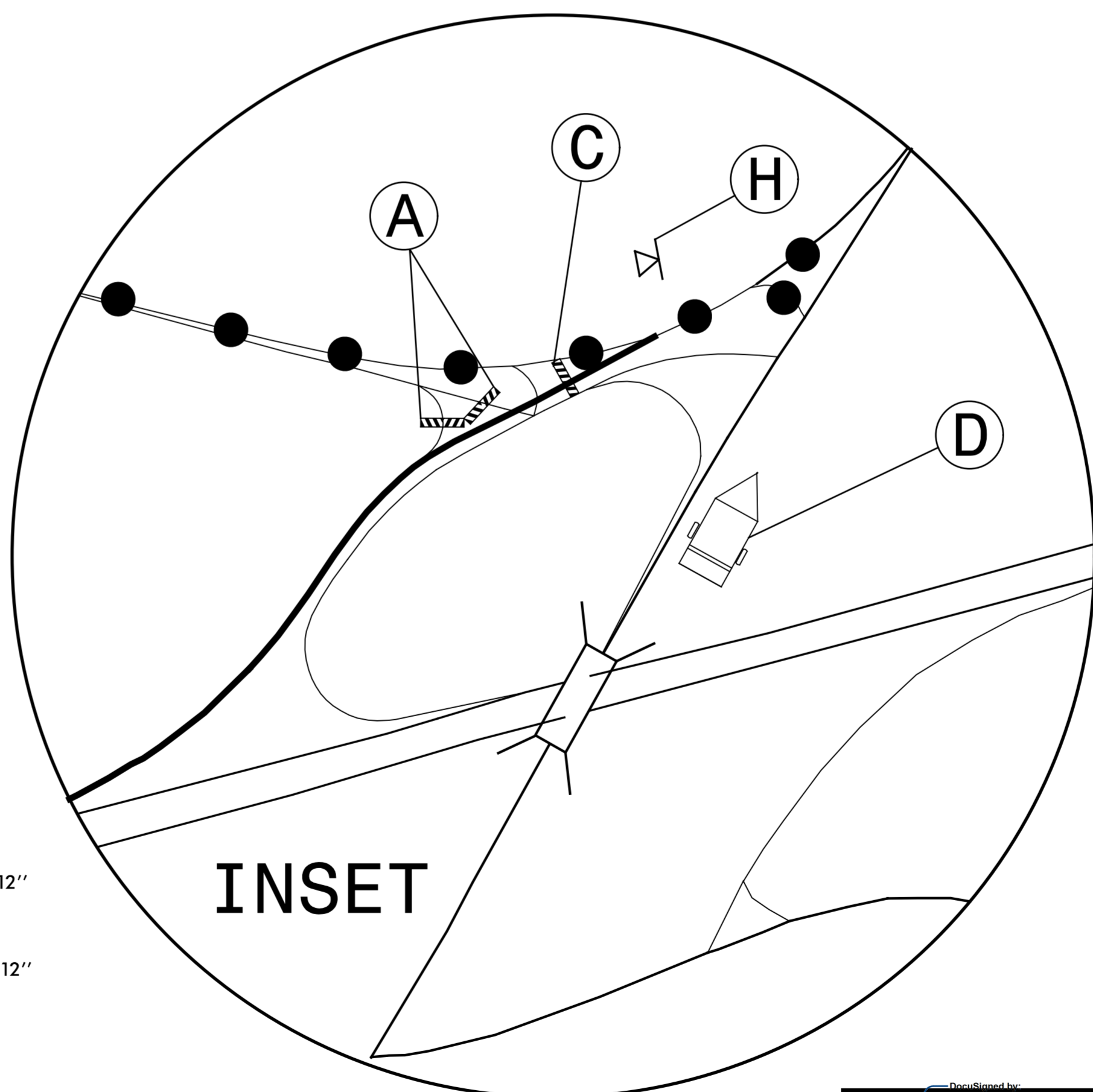
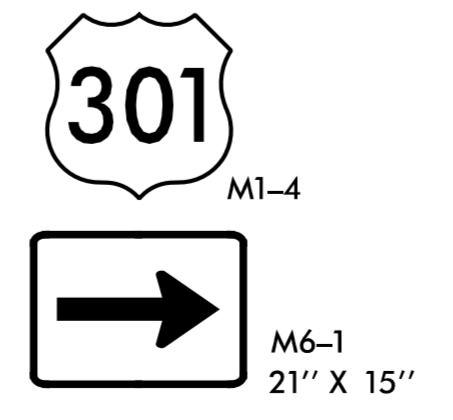
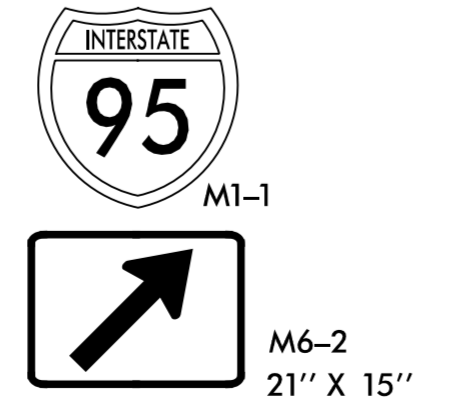
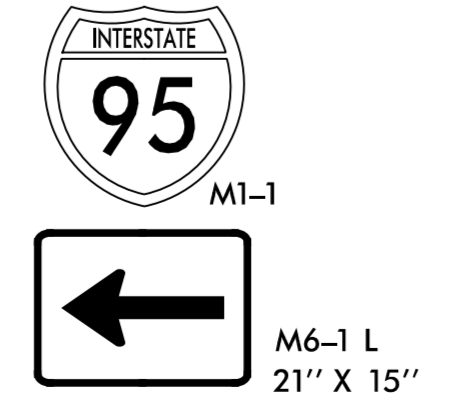
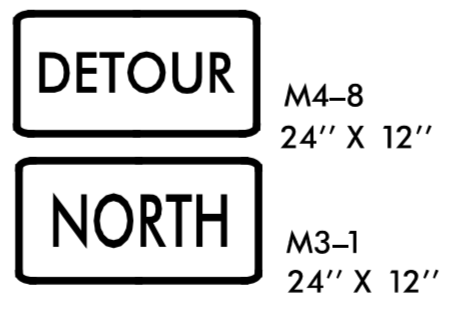
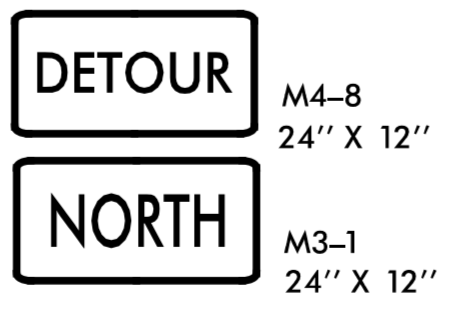
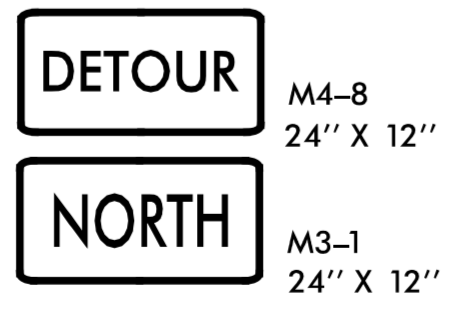
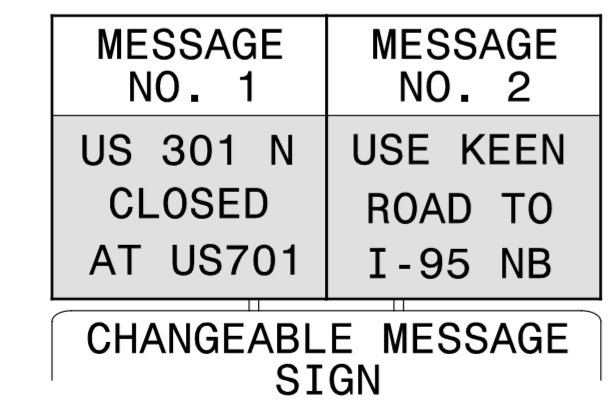
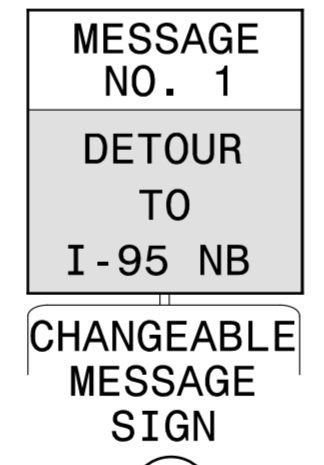
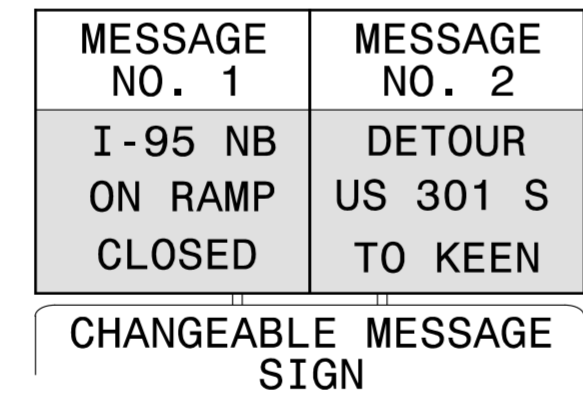
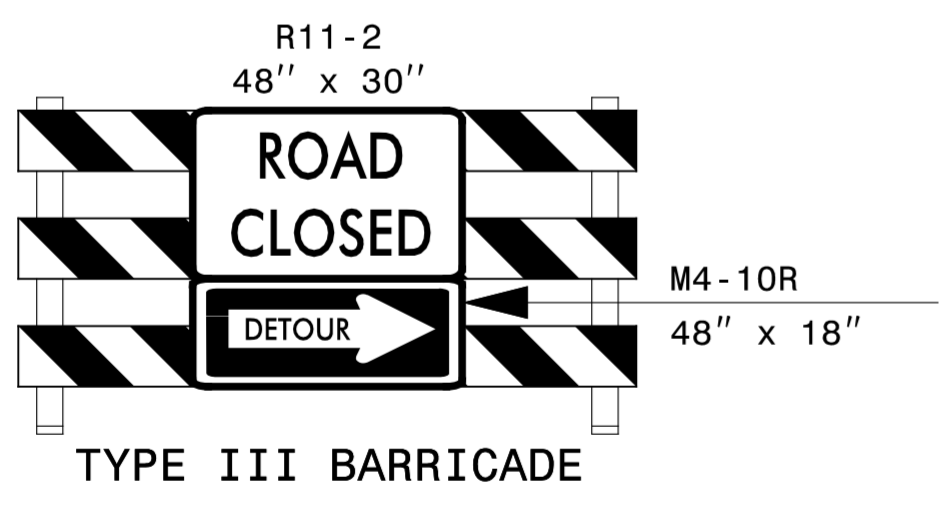
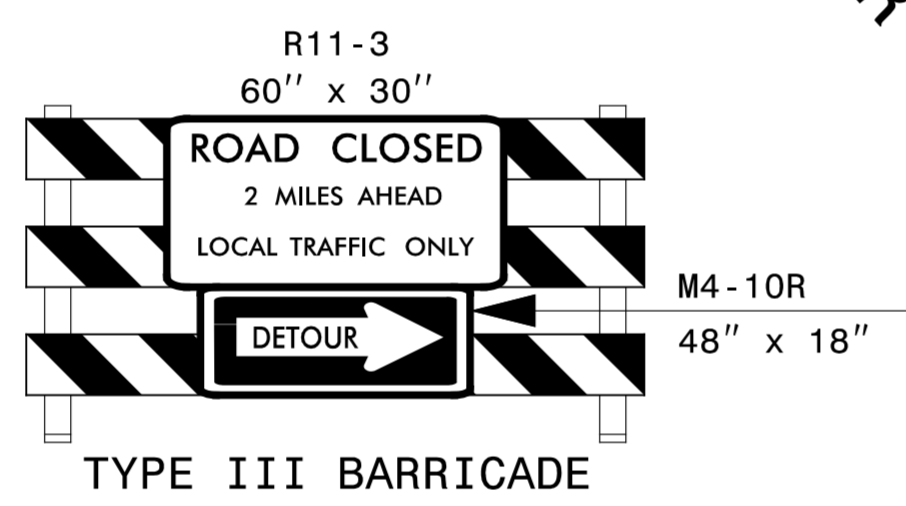
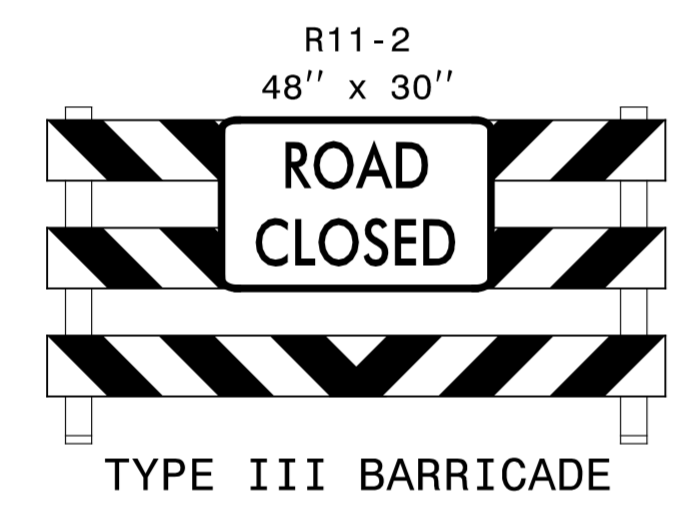
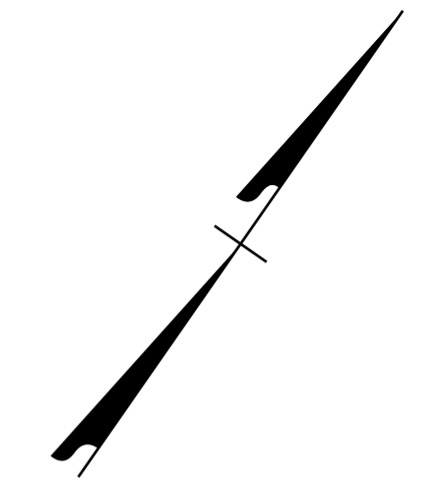
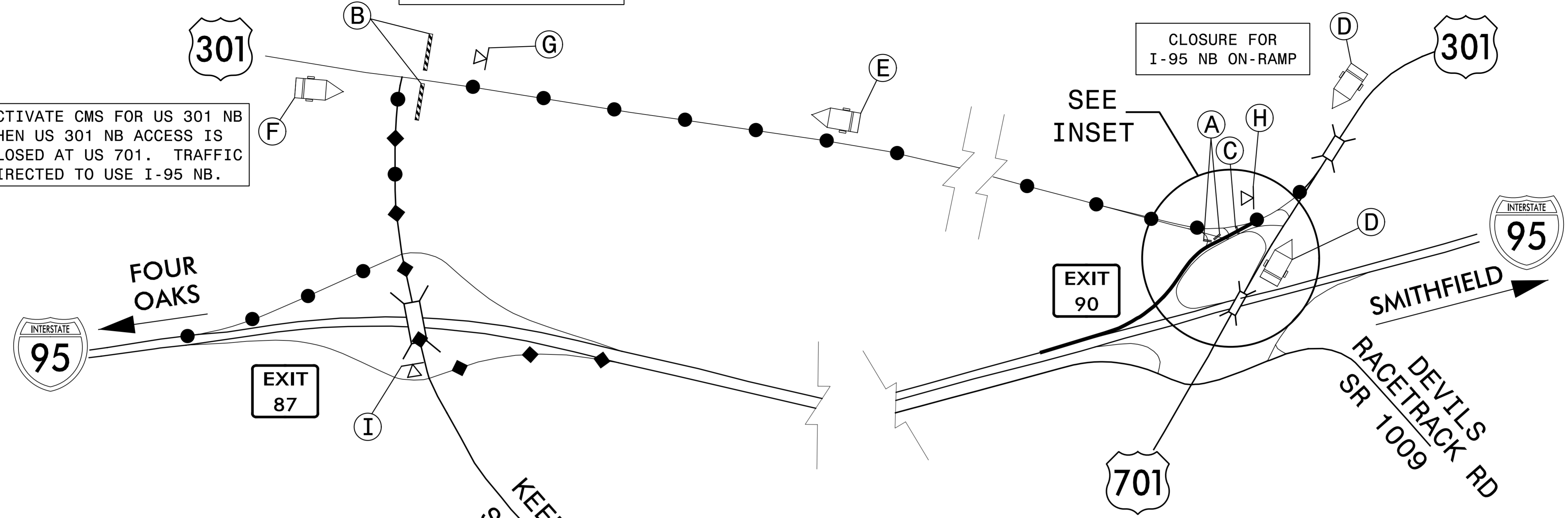


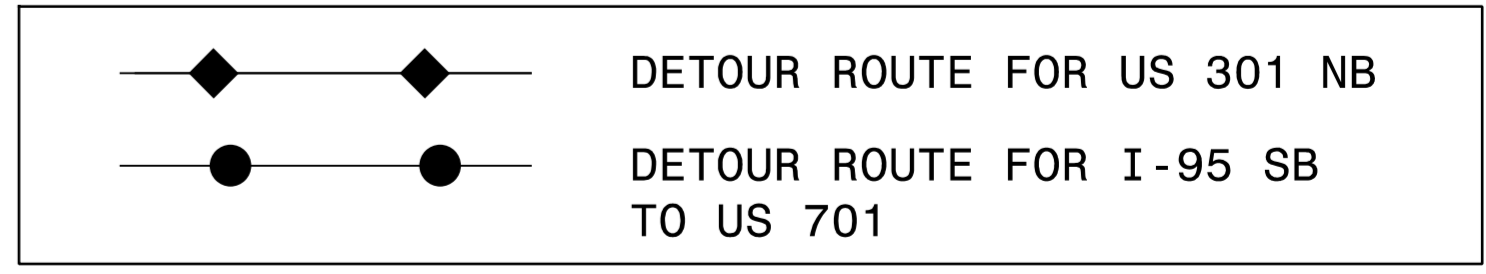
NOTE: USE RSD 1101.02, SHEET 1 OF 9 TO CLOSE US 301 NB AT US 701.

ACTIVATE CMS FOR US 301 NB WHEN US 301 NB ACCESS IS CLOSED AT US 701. TRAFFIC DIRECTED TO USE I-95 NB.

CLOSURE FOR I-95 NB ON-RAMP



NOTE: CLOSE EXIT 90 ON-RAMP US 701 TO I-95 SB USING DRUMS SPACED 10' ON CENTER. DETOUR TRAFFIC ALONG US 301 TO KEEN RD (1178), THEN BACK ON I-95 SB. COMPLETE MILLING, RESURFACING AND PAVEMENT MARKING ON RAMP AND REOPEN TO TRAFFIC.



USE IN CONJUNCTION WITH RSD 1101.02, SHEET 4 AND TMP-2A

DOCUMENT NOT CONSIDERED FINAL UNLESS ALL SIGNATURES COMPLETED

APPROVED: *Michael T. Rzepka* DATE: 12/1/2015

DETOUR FOR EXIT 90 (ON-RAMP) US 701 TO I-95 SB