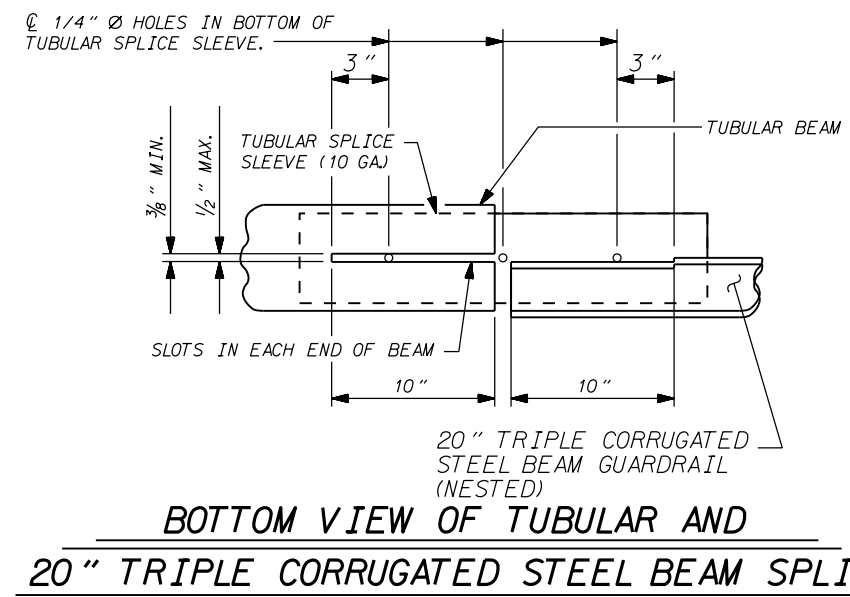
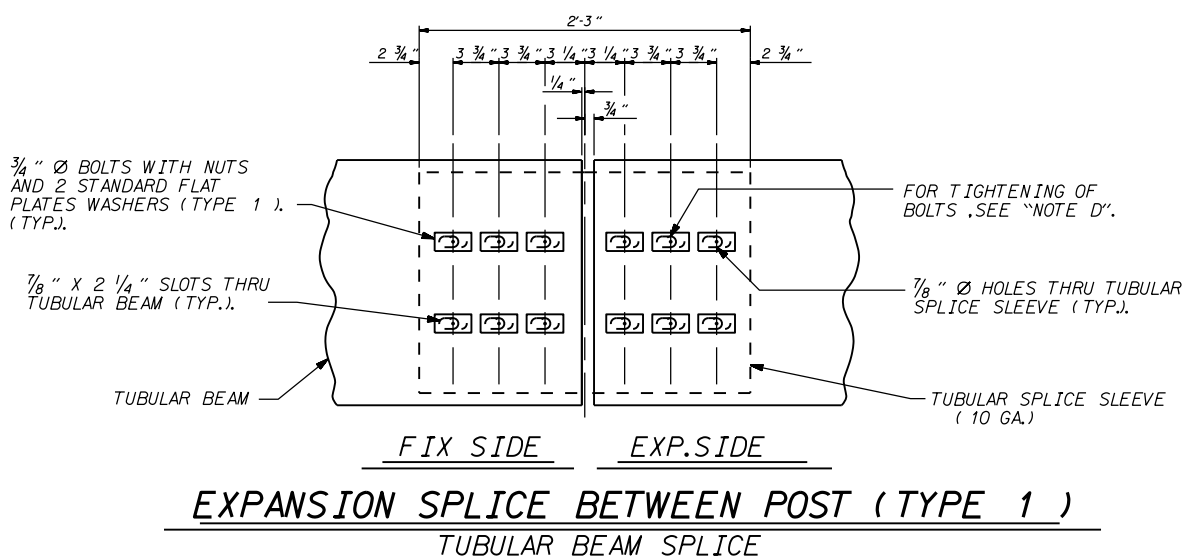
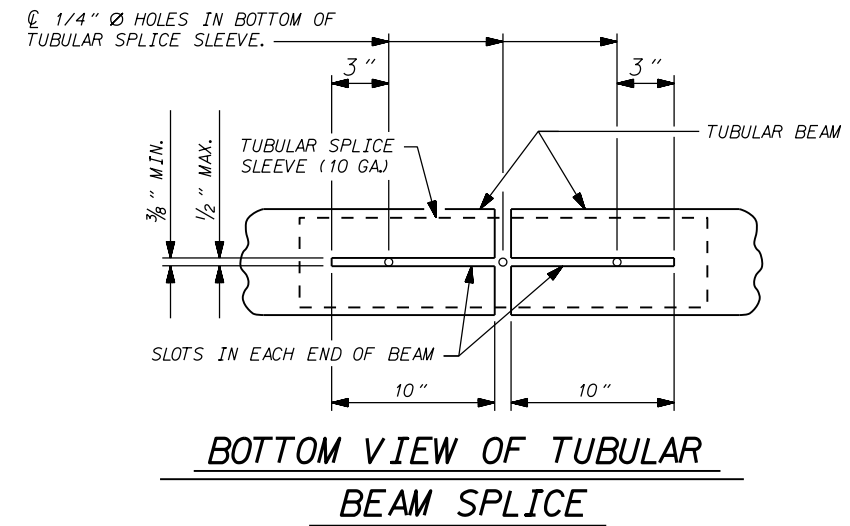
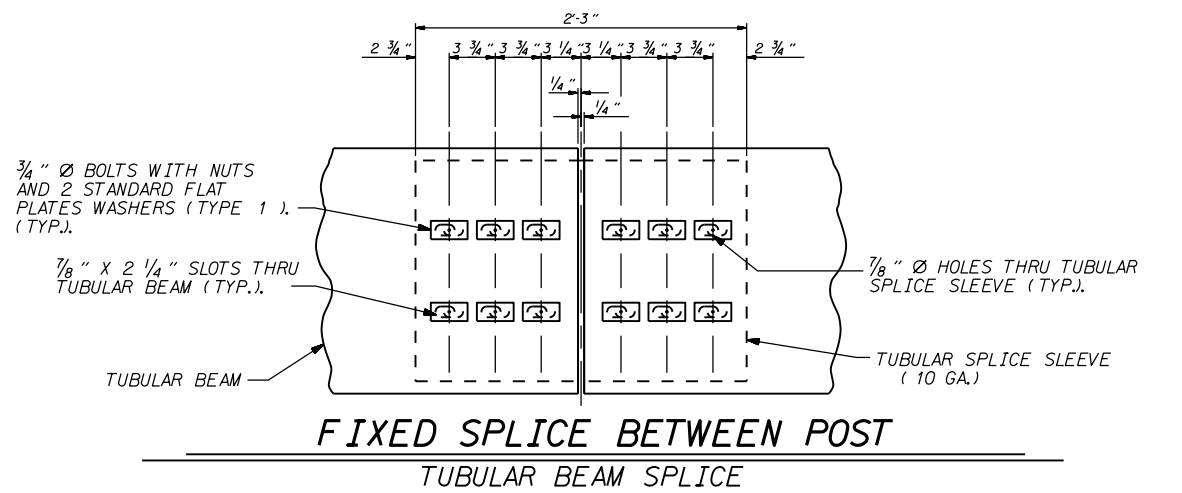
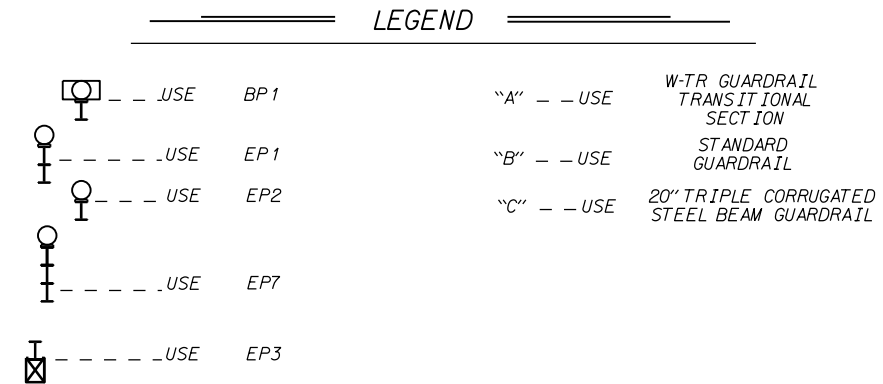


DETAIL "T"



**TABLE 2
FLAT PLATE WASHER DIMENSIONS**

| TYPE | DESCRIPTION | A | B |
|------|-----------------|----|--------|
| 1 | STANDARD WASHER | 3" | 1 1/2" |

FLAT PLATE WASHER - TYPE 6

"NOTE D": BOLTS ON EXPANSION SIDE OF TUBULAR BEAM SPLICE SHALL BE TIGHTENED FINGER TIGHT. DOUBLE NUTS SHALL BE USED AND TIGHTENED AGAINST EACH OTHER TO PREVENT THE NUTS FROM BECOMING LOOSE ON THE BOLT.

**CONTRACT STANDARDS
AND DEVELOPMENT UNIT**
 Office 919-707-6950 FAX 919-250-4119

**RETROFIT OF EXISTING
BRIDGE RAIL WITH
TUBULAR BEAM GUARDRAIL**

ORIGINAL BY: C.O. CUEVAS DATE: 9-1-98
 MODIFIED BY: DATE: _____
 CHECKED BY: DATE: _____
 FILE SPEC.: ds182:\usr\cesar\english\retrofit.dgn