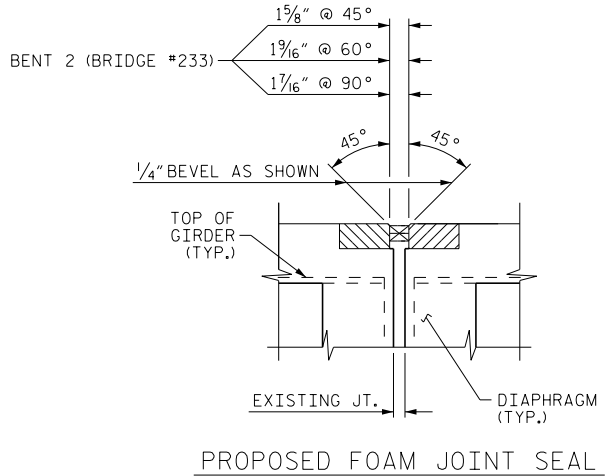
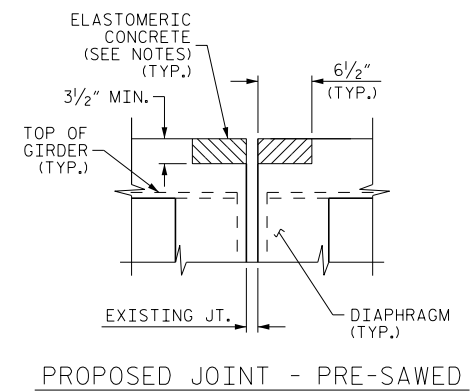
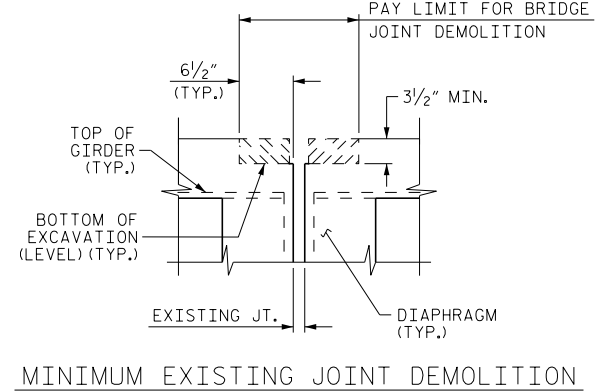
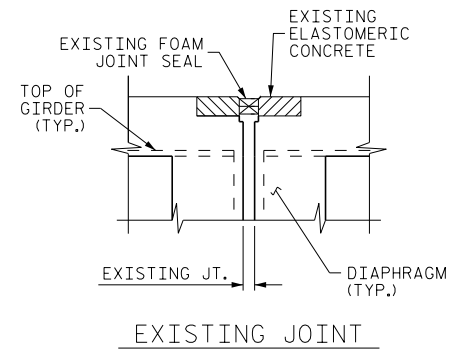


SECTION A-A

NOTE: RETAIN ALL EXISTING REINFORCING STEEL. CLEAN AND REPAIR AS REQ'D.



SECTION B-B

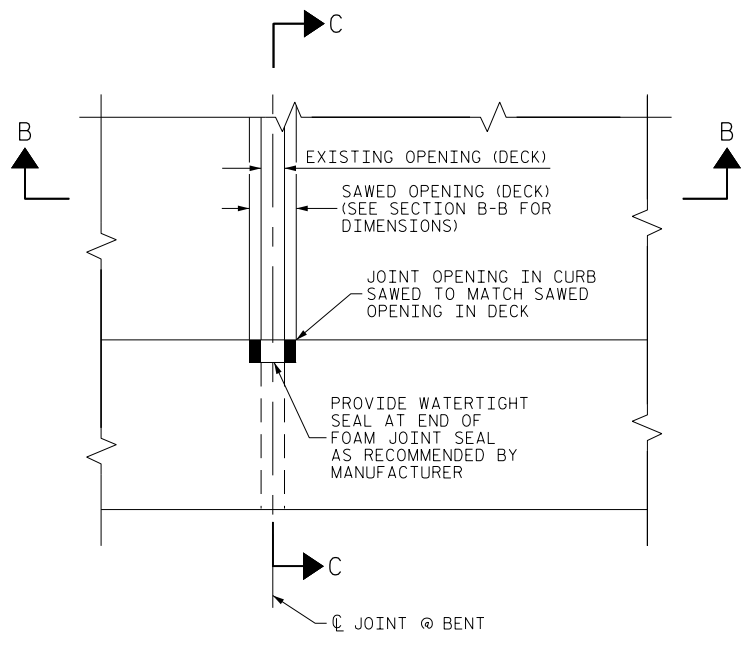
IF BRIDGE JOINT DEMOLITION EXCAVATION EXTENDS MORE THAN 2" BELOW THE BOTTOM OF THE PLANNED ELASTOMERIC CONCRETE HEADER, AS SHOWN, APPROVED REPAIR CONCRETE SHALL BE PLACED IN THE EXCAVATED AREA TO THE ELEVATION AT THE BOTTOM OF THE ELASTOMERIC CONCRETE.
DEMOLISH BRIDGE JOINT AREA TO THE NECESSARY DEPTH SUCH THAT ELASTOMERIC CONCRETE SHALL BE FOUNDED ON CONCRETE OR REPAIR CONCRETE SUBSTRATE.

BRIDGE NO.	LOCATION	ELASTOMERIC CONCRETE
		CU. FT.
228	END BENT 2	10.2
230	END BENT 2	12.4
233	END BENT 1	7.6
233	BENT 2	8.8
234	END BENT 1	7.6
* TOTAL		46.6

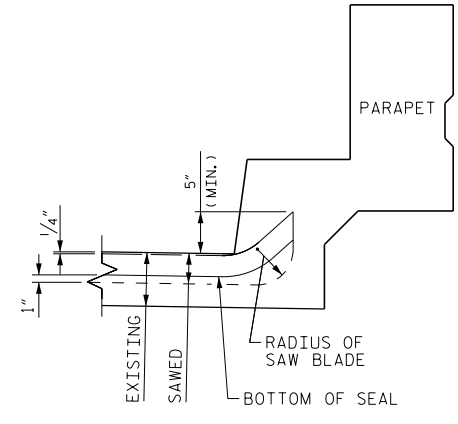
* BASED ON THE MINIMUM BLOCKOUT SHOWN.

NOTES

- THE LOCATIONS AND LIMITS OF WORK FOR BRIDGE JOINT DEMOLITION AND JOINT REPLACEMENT WILL BE DETERMINED IN THE FIELD BY THE ENGINEER.
- FOR BRIDGE JOINT DEMOLITION, SEE SPECIAL PROVISIONS.
- FOR ELASTOMERIC CONCRETE, SEE SPECIAL PROVISIONS.
- FOR FOAM JOINT SEALS, SEE SPECIAL PROVISIONS.
- THE INSTALLED FOAM JOINT SEALS SHALL BE WATERTIGHT.
- NOMINAL UNCOMPRESSED SEAL WIDTH OF FOAM JOINT SEAL SHALL BE 2" AT THE BENTS AND END BENTS.
- THE CONTRACTOR WILL NOT BE PERMITTED TO FORM THE JOINT FOR THE FOAM JOINT SEAL IN LIEU OF SAWING THE JOINT.
- TOP OF ELASTOMERIC CONCRETE SHALL MATCH THE TOP OF THE FINAL DECK RIDING SURFACE.



PLAN



SECTION C-C

FOAM JOINT SEAL SHALL BE FACTORY FORMED OR CUT, HEAT WELDED AND TURNED UP PARALLEL TO SLOPED FACE OF CURB.

PROJECT NO. I-5758
 HENDERSON COUNTY
 BRIDGE NO. 228, 230, 233 & 234

DocuSigned by:
 John A. Yannaccone
 PROFESSIONAL ENGINEER
 SEAL 32492
 JOHN A. YANNACCONE
 1/25/2016

STATE OF NORTH CAROLINA
 DEPARTMENT OF TRANSPORTATION
 RALEIGH
 JOINT DETAILS

REVISIONS						SHEET NO. S-6
NO.	BY:	DATE:	NO.	BY:	DATE:	
1			3			TOTAL SHEETS 6
2			4			

DOCUMENT NOT CONSIDERED FINAL UNLESS ALL SIGNATURES COMPLETED