

MESSAGE NO. 1	MESSAGE NO. 2
RAMP TO I-26 W CLOSED	DETOUR AHEAD

CHANGEABLE MESSAGE SIGN

(A)

MESSAGE NO. 1	MESSAGE NO. 2
DETOUR I-26 WEST	STRAIGHT ON US 25 NORTH

CHANGEABLE MESSAGE SIGN

(B)

MESSAGE NO. 1	MESSAGE NO. 2
RAMP TO I-26 W CLOSED	U-TURN AT NEXT SIGNAL

CHANGEABLE MESSAGE SIGN

(C)

MESSAGE NO. 1	MESSAGE NO. 2
DETOUR I-26 WEST	U-TURN AT SIGNAL

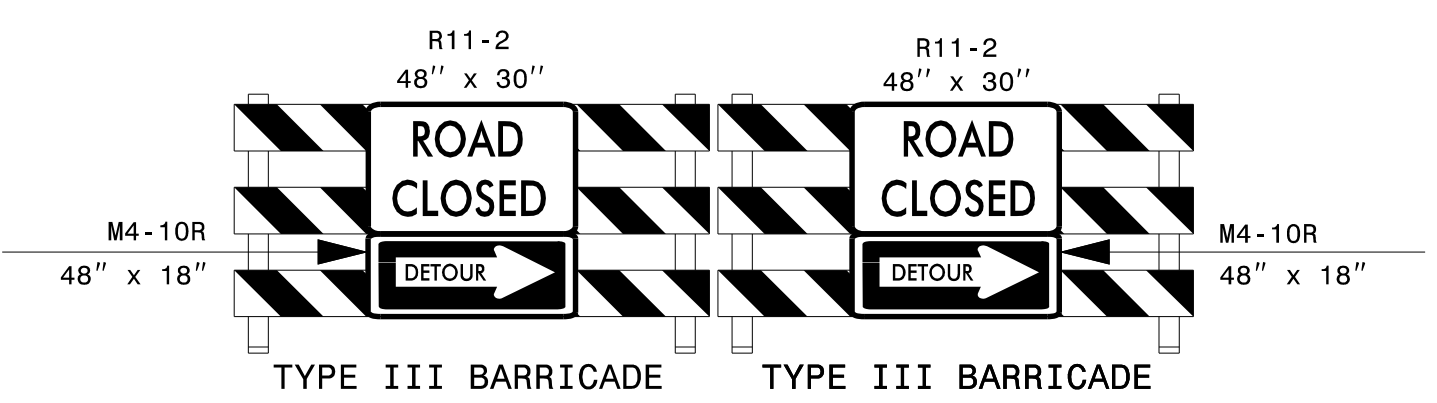
CHANGEABLE MESSAGE SIGN

(D)

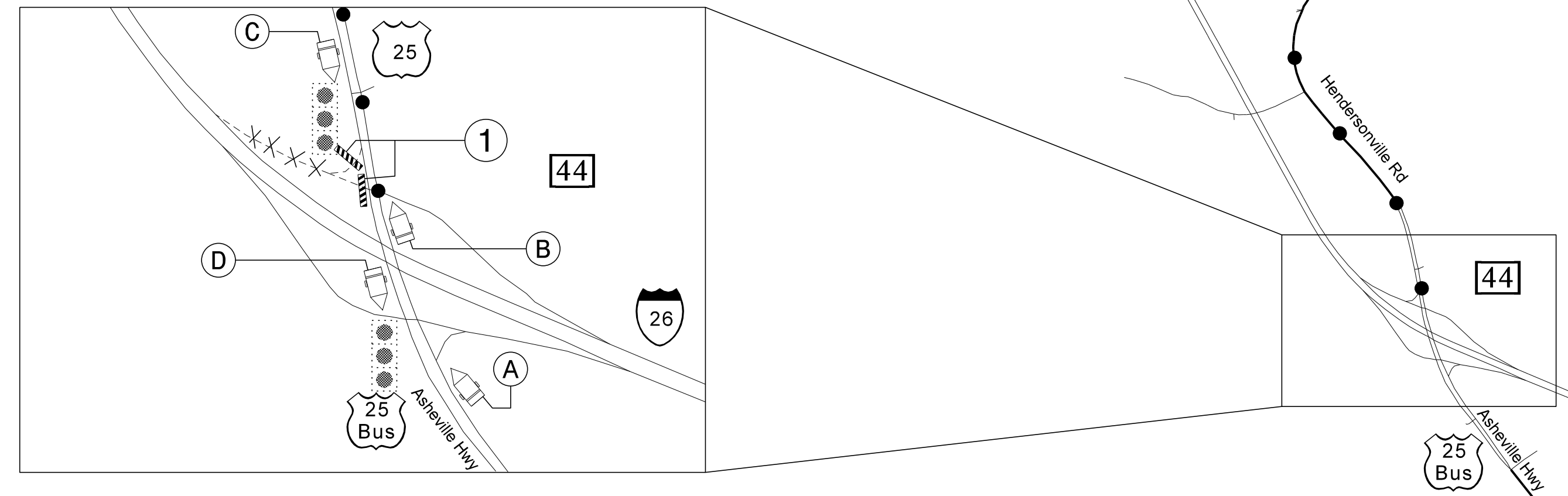
MESSAGE NO. 1	MESSAGE NO. 2
DETOUR I-26 WEST	LEFT AT SIGNAL

CHANGEABLE MESSAGE SIGN

(E)



(1)



1/19/2016 p:\tip\projects-1\5758\traffic\control\tp\I-5758\_TC\_TMP-1.dgn User:kbroadwell

APPROVED: *J. W. Woolard, Jr.*  
679C18E6AD8427

DATE: 1/19/2016

SEAL 019862  
 ENGINEER  
 J. W. WOOLARD, JR.

**DOCUMENT NOT CONSIDERED FINAL  
 UNLESS ALL SIGNATURES COMPLETED**



**I-26 WESTBOUND  
 EXIT 44  
 ENTRANCE RAMP  
 DETOUR**