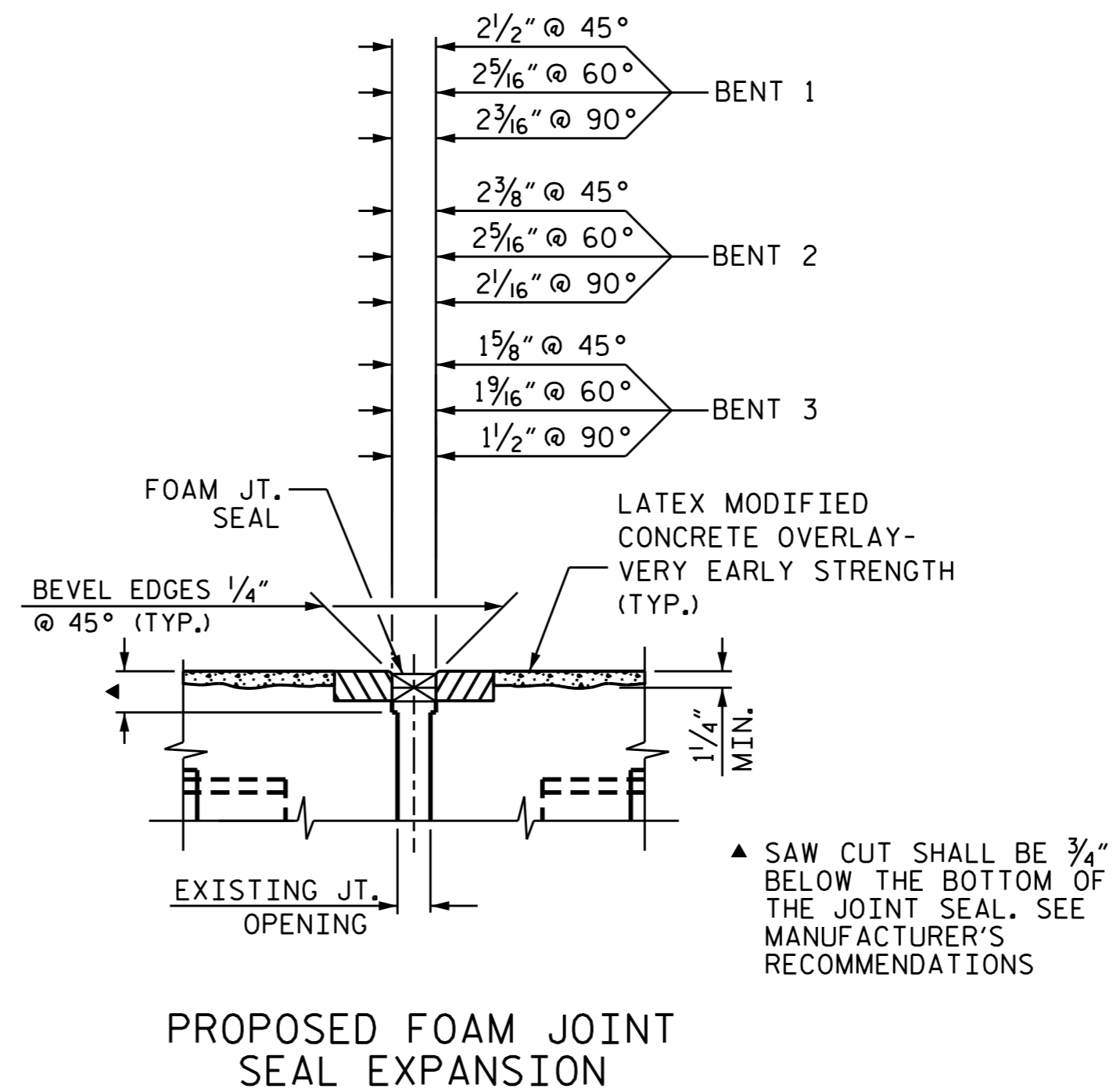


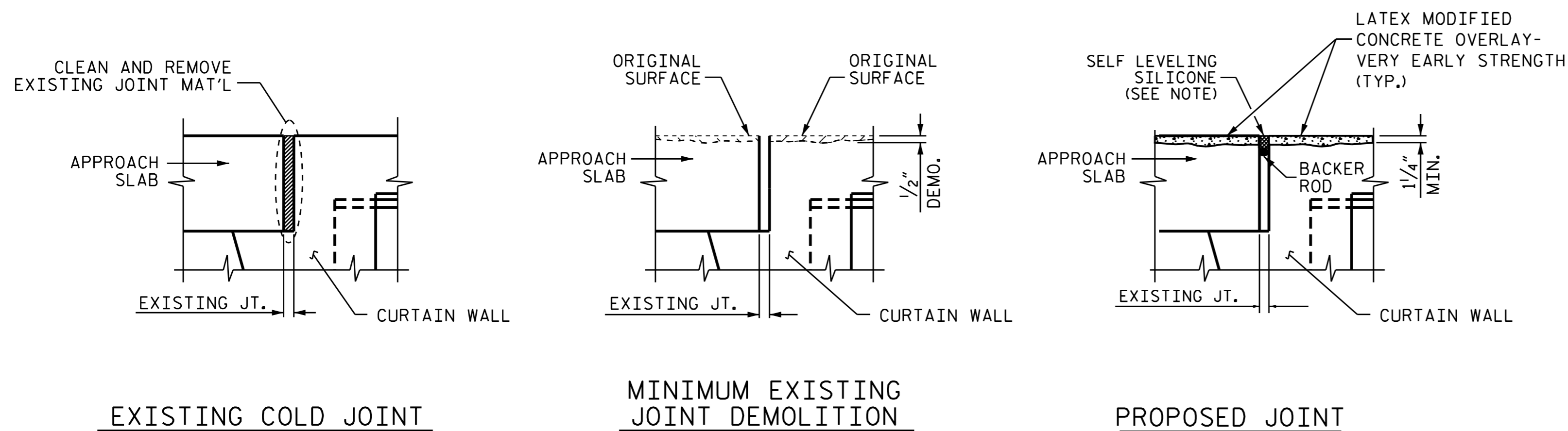
JOINT INSTALLATION SEQUENCE AT BENTS  
SECTION B-B



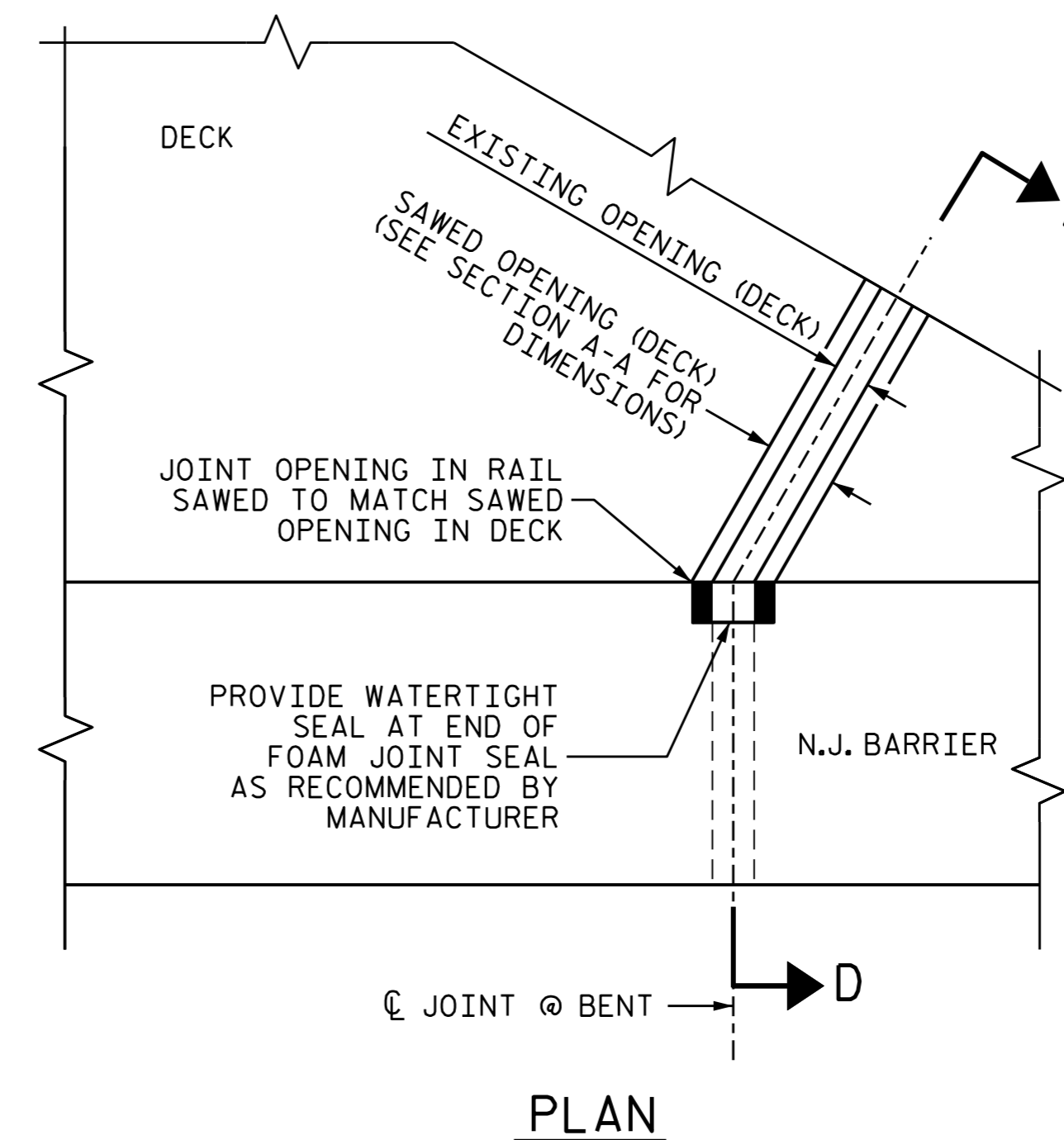
**NOTES:**  
 CONTRACTOR SHALL FIELD VERIFY THE EXISTING FORMED OPENING PRIOR TO OBTAINING JOINT MATERIAL.  
 IF THE EMBEDDED PORTION OF THE EXISTING PLASTIC WATERSTOP IS EXPOSED DURING REMOVAL OF UNSOUND CONCRETE OR IF UNSOUND CONCRETE IS REMOVED TO WITHIN 2" OF THE WATERSTOP, THE ENTIRE WATERSTOP SHALL BE REMOVED.  
 HYDRO-DEMOLITION OR EXCAVATION OF CONCRETE AT THE EXISTING JOINT SHALL RESULT IN THE BOTTOM OF THE EXCAVATION BEING REASONABLY FLAT, TO PROVIDE SUFFICIENT SUBSTRATE FOR PLACEMENT AND SUPPORT OF ELASTOMERIC CONCRETE.  
 THE CONTRACTOR SHALL REMOVE THE EXISTING JOINT MATERIAL AND CLEAN UP THE AREA. CONTAMINATED CONCRETE SHALL BE REMOVED TO THE DEPTH OF MINIMUM 2 3/4" OR SOUND CONCRETE. THE EXISTING ANCHOR BOLTS SHALL BE CUT FLASH PRIOR TO POURING OF THE ELASTOMERIC CONCRETE.  
 RETAIN ALL EXISTING REINFORCING STEEL. CLEAN AND REPAIR AS NEEDED.  
 FOR FOAM JOINT SEALS, SEE SPECIAL PROVISIONS.  
 FOR ELASTOMERIC CONCRETE, SEE SPECIAL PROVISIONS. THE WIDTH OF THE UNCOMPRESSED FOAM JOINT MATERIAL SHALL BE 2 3/4" FOR BENT 1 AND BENT 2, 2" FOR BENT 3.  
 THE SELF LEVELING SILICONE SHALL BE ON NCDOT APPROVED LIST OF PRODUCTS OR APPROVED EQUAL.

ELASTOMERIC CONCRETE		
	UNIT	BRIDGE 142
BENT 1	CU. FT.	13.4
BENT 2	CU. FT.	14.5
BENT 3	CU. FT.	16.3
* TOTAL	CU. FT.	44.2

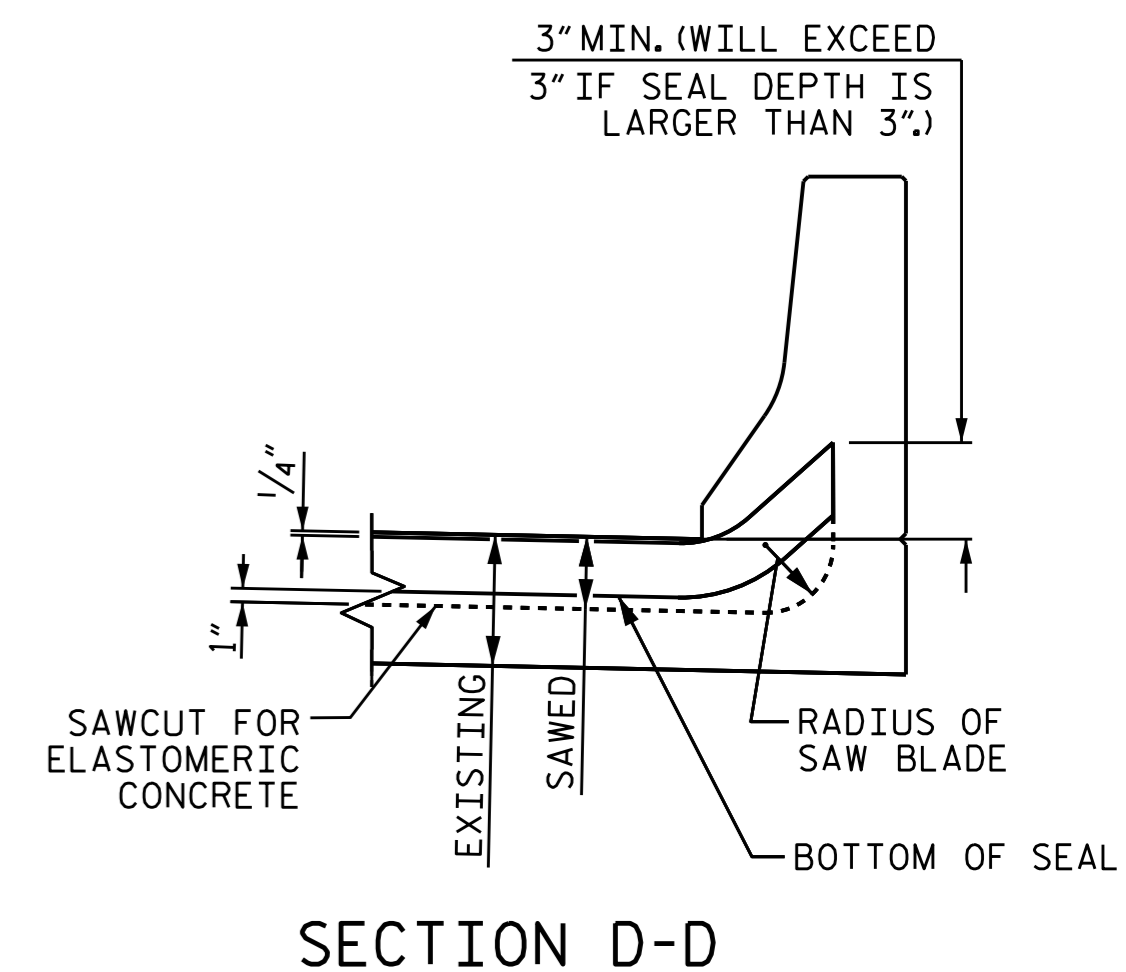
\* BASED ON THE MINIMUM BLOCKOUT SHOWN.



JOINT INSTALLATION SEQUENCE AT END BENTS  
SECTION A-A



JOINT SEAL DETAILS AT BENT



SECTION D-D

PROJECT NO. I-5788  
CUMBERLAND COUNTY  
 BRIDGE NO.: 142



DocuSigned by:  
 TING HSILNG FANG  
 E72088405971435  
 1/28/2016

STATE OF NORTH CAROLINA DEPARTMENT OF TRANSPORTATION RALEIGH						SHEET NO. S-8
SUPERSTRUCTURE JOINT DETAILS						
REVISIONS						TOTAL SHEETS 72
NO.	BY:	DATE:	NO.	BY:	DATE:	
1			3			
2			4			

DRAWN BY : T. H. FANG DATE : 11/6/15  
 CHECKED BY : E. I. OMILE DATE : 11/19/15