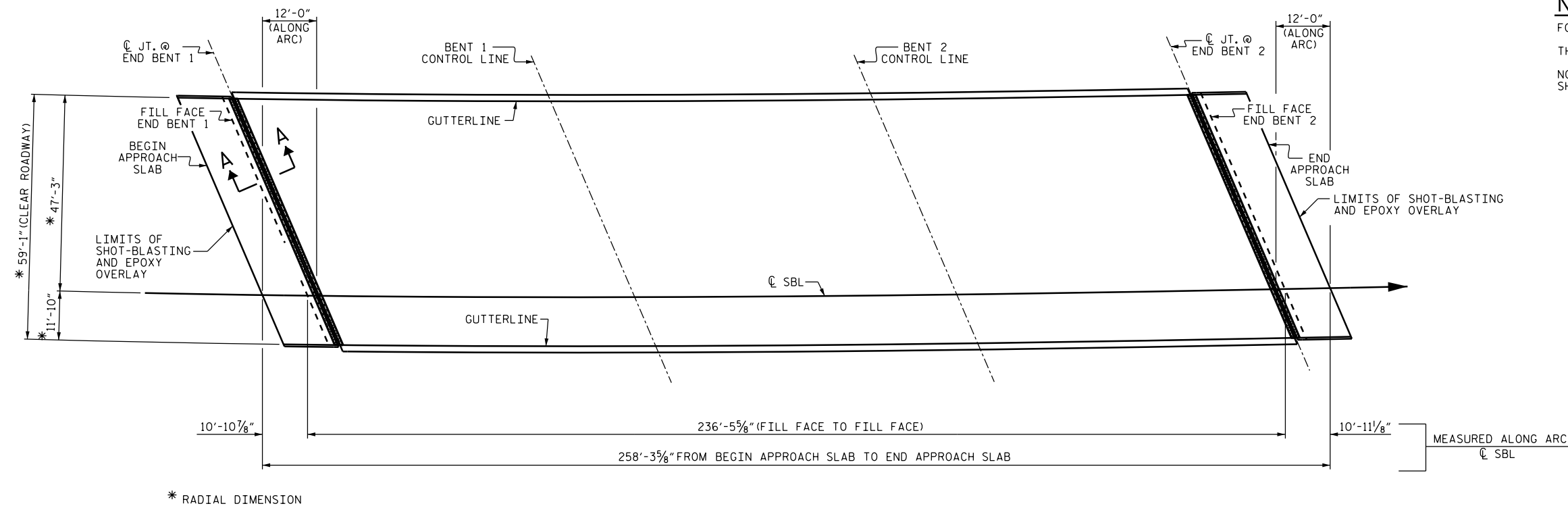


SUMMARY OF QUANTITIES

	ESTIMATE	ACTUAL
ELASTOMERIC CONCRETE	43.0 CU. FT.	
BRIDGE JOINT DEMOLITION	171.0 SQ. FT.	

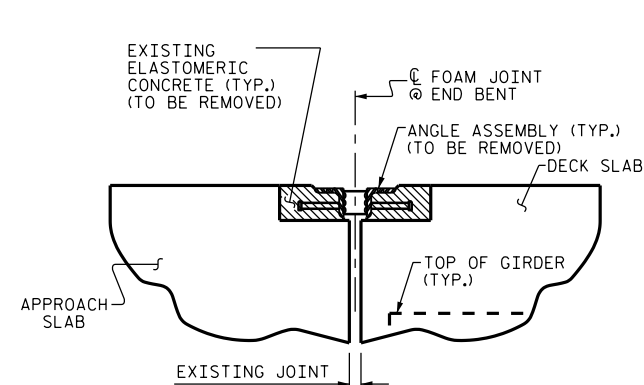
NOTES:

FOR FOAM JOINT SEALS SEE SPECIAL PROVISIONS.
 THE INSTALLED FOAM JOINT SEAL SHALL BE WATER TIGHT.
 NOMINAL UNCOMPRESSED SEAL WIDTH OF FOAM JOINT SEAL SHALL BE 2".

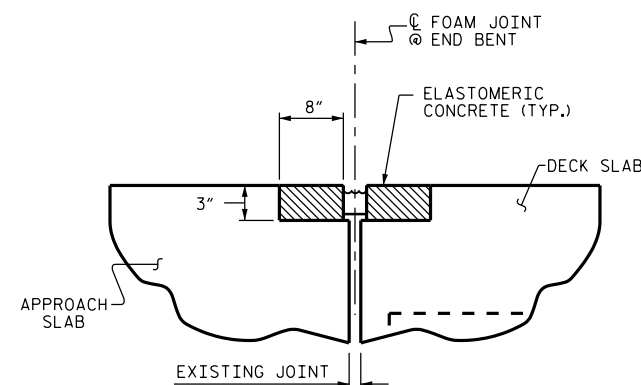


PLAN

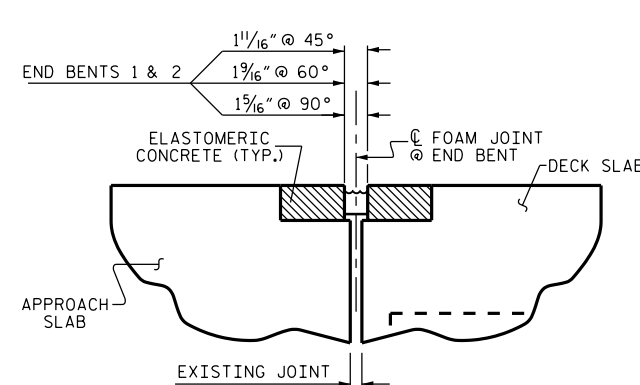
JOINT DEMOLITION



EXISTING



PROPOSED

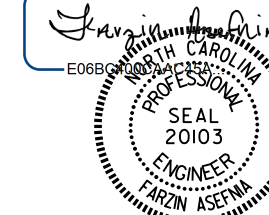


PROPOSED FOAM JOINT SEAL

JOINT SEAL DETAILS AT END BENT
SECTION A-A

PROJECT NO. I-5790
GUILFORD COUNTY
 BRIDGE NO. 791

DocuSigned by:



1/27/2016

REVISIONS						SHEET NO.
NO.	BY:	DATE:	NO.	BY:	DATE:	S-10
1			3			TOTAL SHEETS
2			4			10

DRAWN BY : M. WELDON DATE : 10/2015
 CHECKED BY : F. ASEFNIA DATE : 10/2015