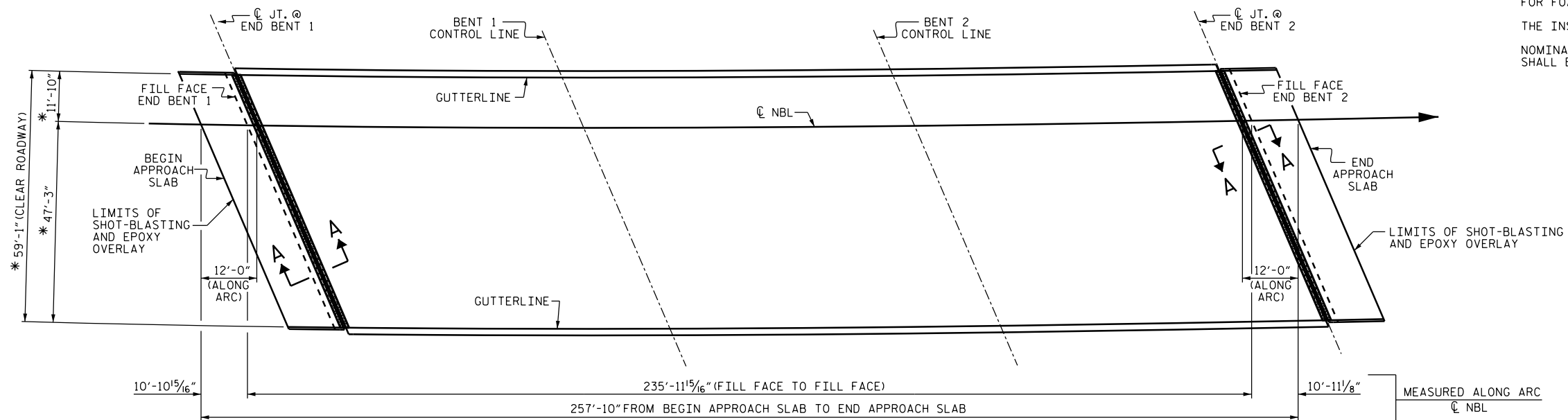


SUMMARY OF QUANTITIES

	ESTIMATE	ACTUAL
ELASTOMERIC CONCRETE	43.0 CU. FT.	
BRIDGE JOINT DEMOLITION	171.0 SQ. FT.	

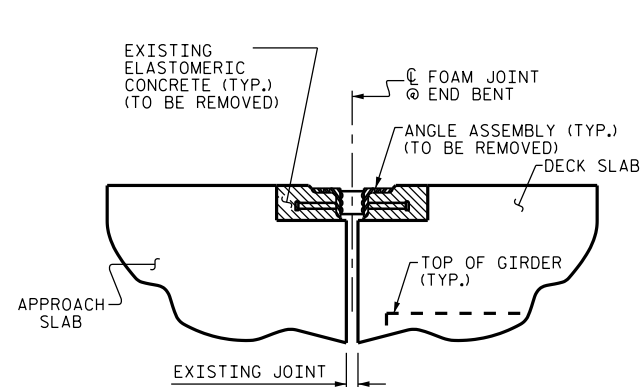
NOTES:

FOR FOAM JOINT SEALS SEE SPECIAL PROVISIONS.  
 THE INSTALLED FOAM JOINT SEAL SHALL BE WATER TIGHT.  
 NOMINAL UNCOMPRESSED SEAL WIDTH OF FOAM JOINT SEAL SHALL BE 2".

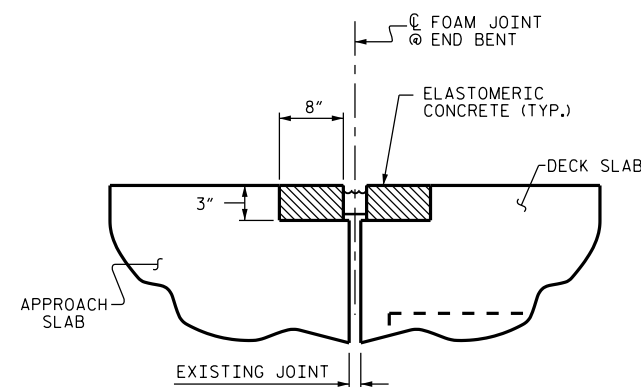


\* RADIAL DIMENSION

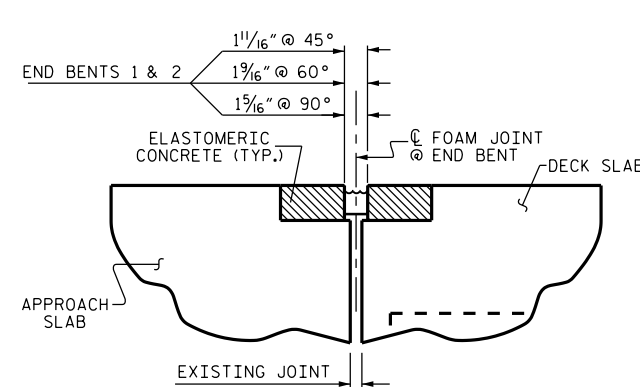
JOINT DEMOLITION



EXISTING



PROPOSED



PROPOSED FOAM JOINT SEAL

JOINT SEAL DETAILS AT END BENT  
SECTION A-A

PROJECT NO. I-5790  
GUILFORD COUNTY  
 BRIDGE NO. 790

STATE OF NORTH CAROLINA DEPARTMENT OF TRANSPORTATION RALEIGH						SHEET NO. S-9	
JOINT DEMOLITION DETAILS (NBL)						TOTAL SHEETS 10	
REVISIONS							
NO.	BY:	DATE:	NO.	BY:	DATE:		
1			3				
2			4				

DocuSigned by:  
  
 NORTH CAROLINA  
 PROFESSIONAL  
 SEAL  
 20103  
 ENGINEER  
 FARZIN ASEFMA

1/27/2016

DRAWN BY : M. WELDON DATE : 10/2015  
 CHECKED BY : F. ASEFNIA DATE : 10/2015