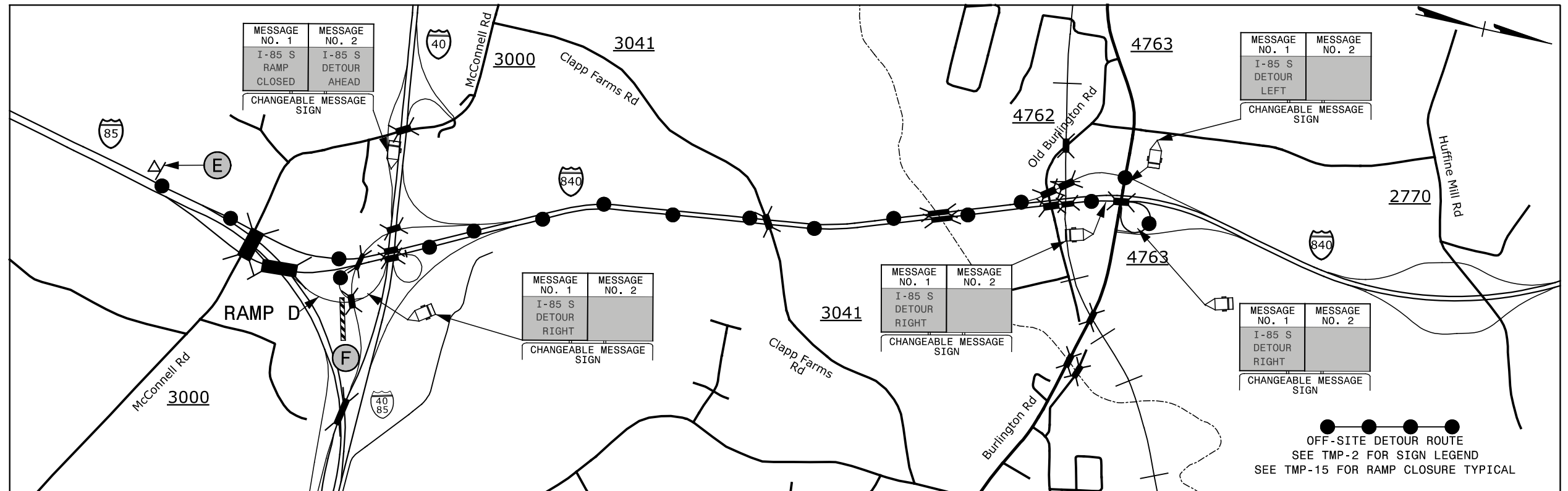


EXIT 44 RAMP TO I-85 - I-40



11/30/2015 10:51:15 AM G:\Traffic\I-5790\I-5855\TMP\I-5790-I-5855-TMP-12.dgn

SEPI
ENGINEERING & CONSTRUCTION

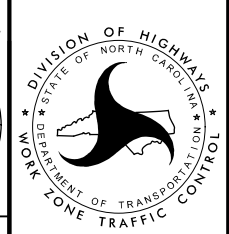
1025 Wade Avenue
Raleigh, NC 27605
Tel: 919-789-9977
Fax: 919-789-9591
License: C-2197

DocuSigned by:
Steve Miller

APPROVED: *Steve Miller*
DATE: 12/4/2015

SEAL

DOCUMENT NOT CONSIDERED FINAL
UNLESS ALL SIGNATURES COMPLETED



**EXIT 44
I-85
DETOUR**