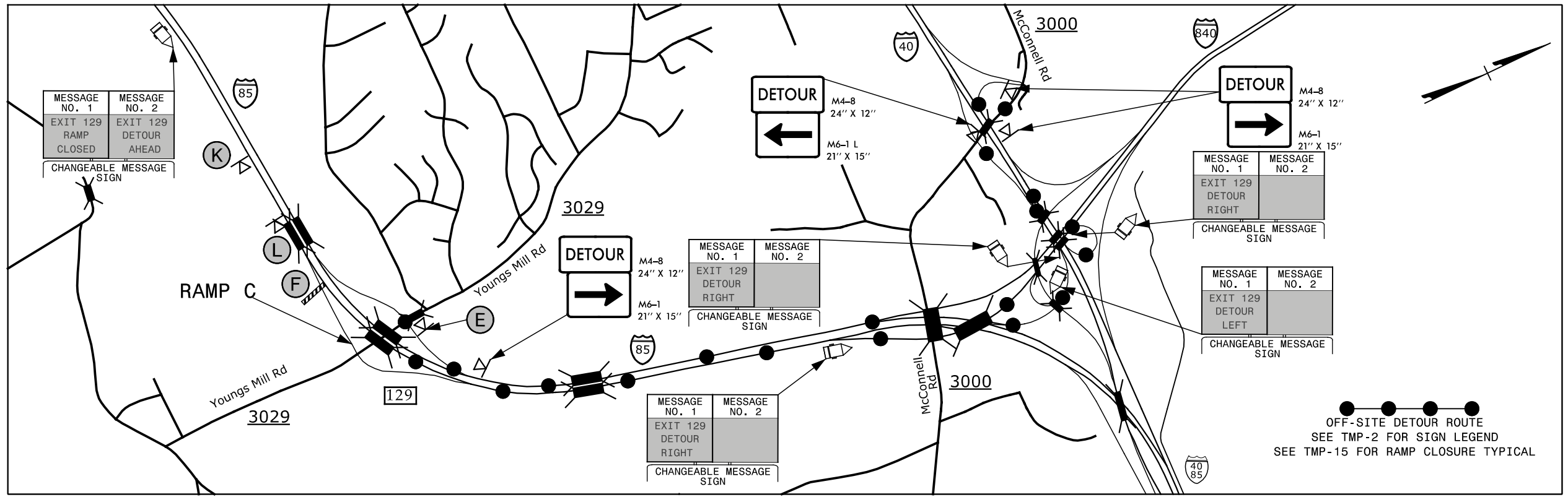
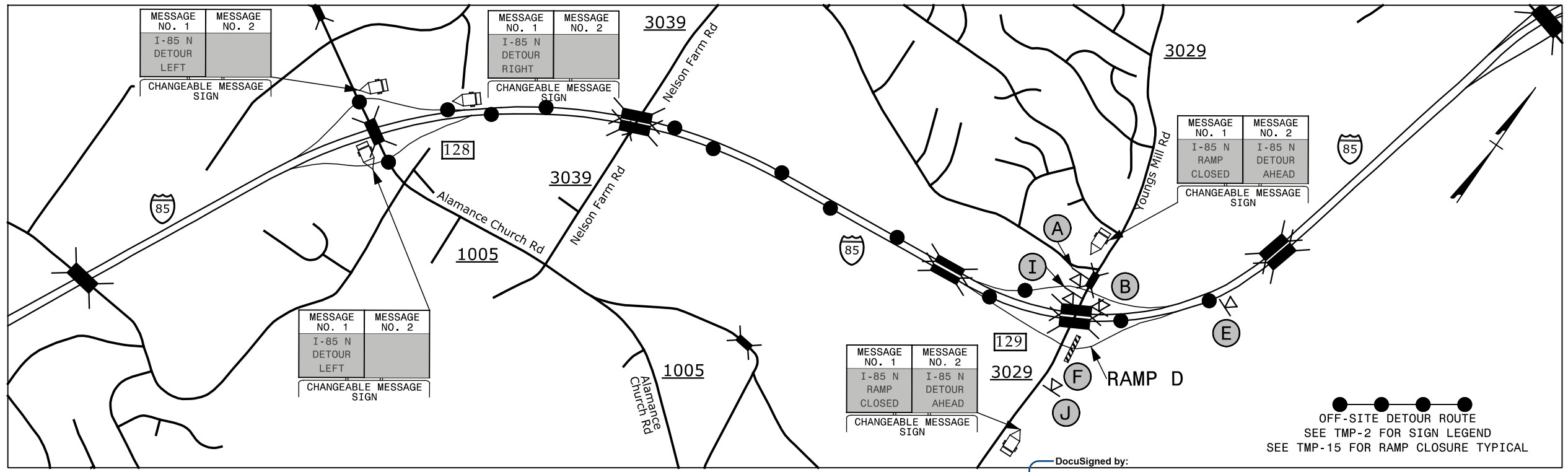


EXIT 129 RAMP C - I-85



EXIT 129 RAMP D - I-85



12/1/2015 10:11:00 AM G:\IT\aff\tr\I5.025.00 I-5790 & I-5855 TMP\TMP-I-5790-I-5855 TMP-11.dgn

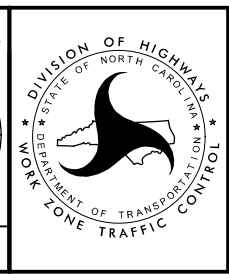
SEPI
ENGINEERING & CONSTRUCTION

1025 Wade Avenue
Raleigh, NC 27605
Tel: 919-789-9977
Fax: 919-789-9591
License: C-2197

APPROVED: *Steve Miller*
DATE: 12/4/2015

SEAL

DOCUMENT NOT CONSIDERED FINAL
UNLESS ALL SIGNATURES COMPLETED



EXIT 129
YOUNGS MILL RD
DETOUR