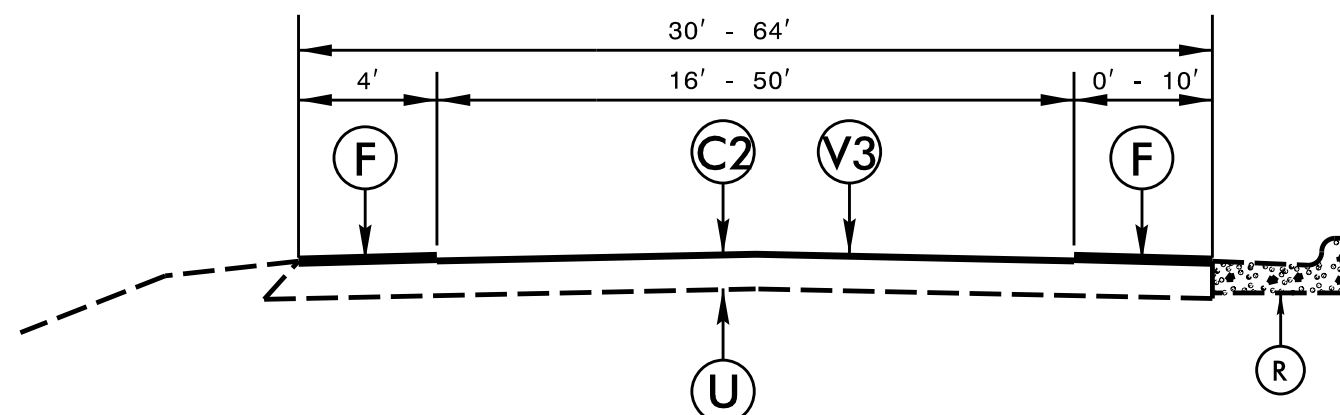


TYPICAL SECTION NO. 7

TO BE USED ON MAPS 12 THRU 17, 24, 27, 28

- MAP 13: STA. 17+22 TO STA. 32+42
- MAP 14: STA. 16+66 TO STA. 51+42
- MAP 15: STA. 10+00 TO STA. 10+85
- MAP 16: STA. 10+00 TO STA. 10+85
- MAP 17: STA. 19+30 TO STA. 20+14

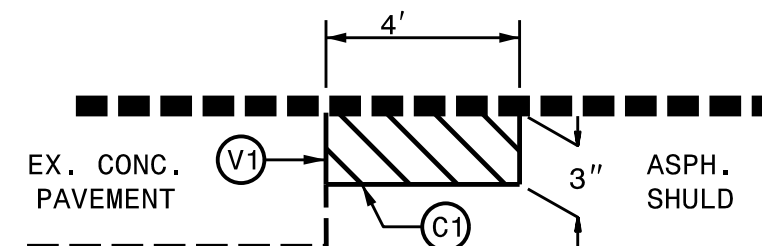


TYPICAL SECTION NO. 8

TO BE USED ON MAPS 13 THRU 17, 23, 25, 26

- MAP 13: STA. 10+00 TO STA. 17+22
- MAP 14: STA. 10+00 TO STA. 16+66
- MAP 15: STA. 10+85 TO STA. 21+70
- MAP 16: STA. 10+85 TO STA. 20+56
- MAP 17: STA. 10+00 TO STA. 19+30

3" MILLING FOR PATCHING DETAIL 1

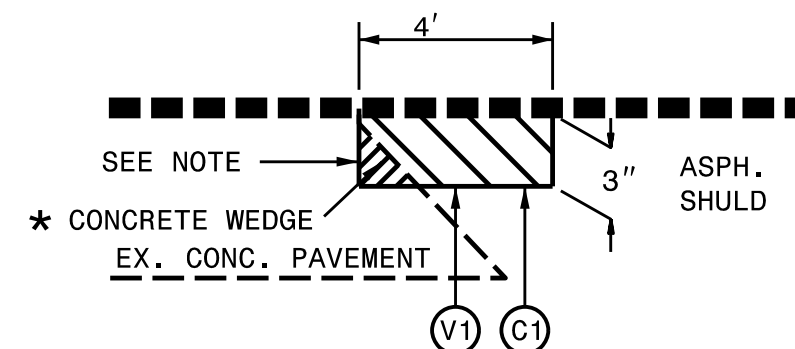


MILL EXISTING ASPHALT PAVEMENT 3" IN DEPTH AND FILL WITH SURFACE COURSE, TYPE S9.5B AT LOCATIONS AS DIRECTED BY THE ENGINEER.

TO BE USED IN CONJUNCTION WITH MAPS 1, 4, 6 AND 8

- MAP 1: 3" MILLING = 15851 SYD
SURFACE COURSE, TYPE S9.5B = 2663 TONS
- MAP 4: 3" MILLING = 2409 SYD
SURFACE COURSE, TYPE S9.5B = 405 TONS
- MAP 6: 3" MILLING = 15844 SYD
SURFACE COURSE, TYPE S9.5B = 2662 TONS
- MAP 8: 3" MILLING = 1570 SYD
SURFACE COURSE, TYPE S9.5B = 264 TONS

3" MILLING FOR PATCHING DETAIL 2



NOTE: CONTRACTOR SHALL SAW CUT 3" DEPTH PRIOR TO MILLING OPERATION. SAW CUT IS INCIDENTAL TO MILLING OPERATION

* CONCRETE WEDGE SHALL BE REMOVED

TO BE USED ON MAPS 11 AND 20

- MAP 11: STA. 25+41 TO STA. 244+74
- MAP 20: STA. 84+32 TO STA. 296+97

PAVEMENT SCHEDULE

C1	PROP. APPROX. 3" ASPHALT CONCRETE SURFACE COURSE, TYPE S9.5B, AT AN AVG. RATE OF 168 LBS PER SQ. YD. IN EACH OF TWO LAYERS	R	EXISTING CONCRETE STRUCTURE	V2	MILLED RUMBLE STRIP
C2	PROP. APPROX. 1½" S9.5C AT AN AVG. RATE OF 168 LBS PER SQ. YD.	U	EXISTING PAVEMENT	V3	MILLING ASPHALT PAVEMENT 1½" DEPTH
F	PROPOSED FOG SEAL TO BE APPLIED TO THE EXISTING ASPHALT SHOULDER	V1	3" MILLING FOR PATCHING	Y	PROPOSED DIAMOND GRINDING