

PLAN @ END BENT 1

PLAN @ END BENT 2

NOTES

FOR BRIDGE APPROACH FILL INCLUDING GEOTEXTILE, 4" Ø DRAINAGE PIPE, AND #78M STONE BACKFILL, SEE ROADWAY PLANS.

GEOTEXTILE SHALL BE TYPE 1 IN ACCORDANCE WITH THE STANDARD SPECIFICATIONS SECTION 1056.

#78M STONE BACKFILL (CLASS V SELECT MATERIAL) SHALL BE IN ACCORDANCE WITH STANDARD SPECIFICATIONS SECTION 1016.

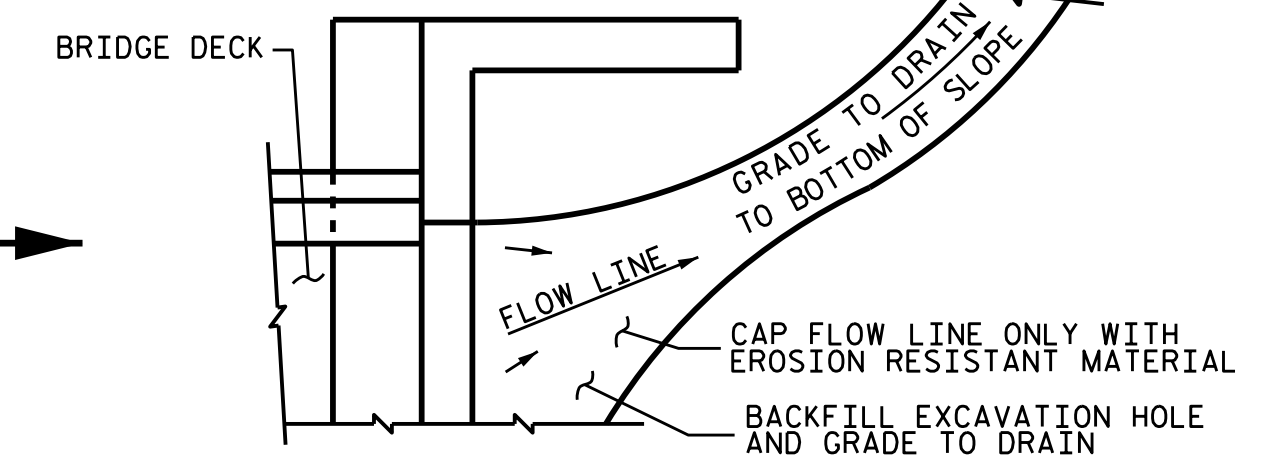
#78M STONE BACKFILL IS TO BE CONTINUOUS ALONG FILL FACE OF BACKWALL FROM OUTSIDE EDGE TO OUTSIDE EDGE OF APPROACH SLAB.

FOR THE 4" Ø DRAINAGE PIPE OUTLET(S), SEE ROADWAY STANDARD DRAWINGS.

AREA BETWEEN THE WINGWALL AND APPROACH SLAB SHALL BE GRADED TO DRAIN THE WATER AWAY FROM THE FILL FACE OF THE BRIDGE AND SHALL BE PAVED. SEE ROADWAY PLANS.

APPROACH SLAB GROOVING IS NOT REQUIRED.

ARC OFFSETS ARE NEGLIGIBLE AND NOT SHOWN.

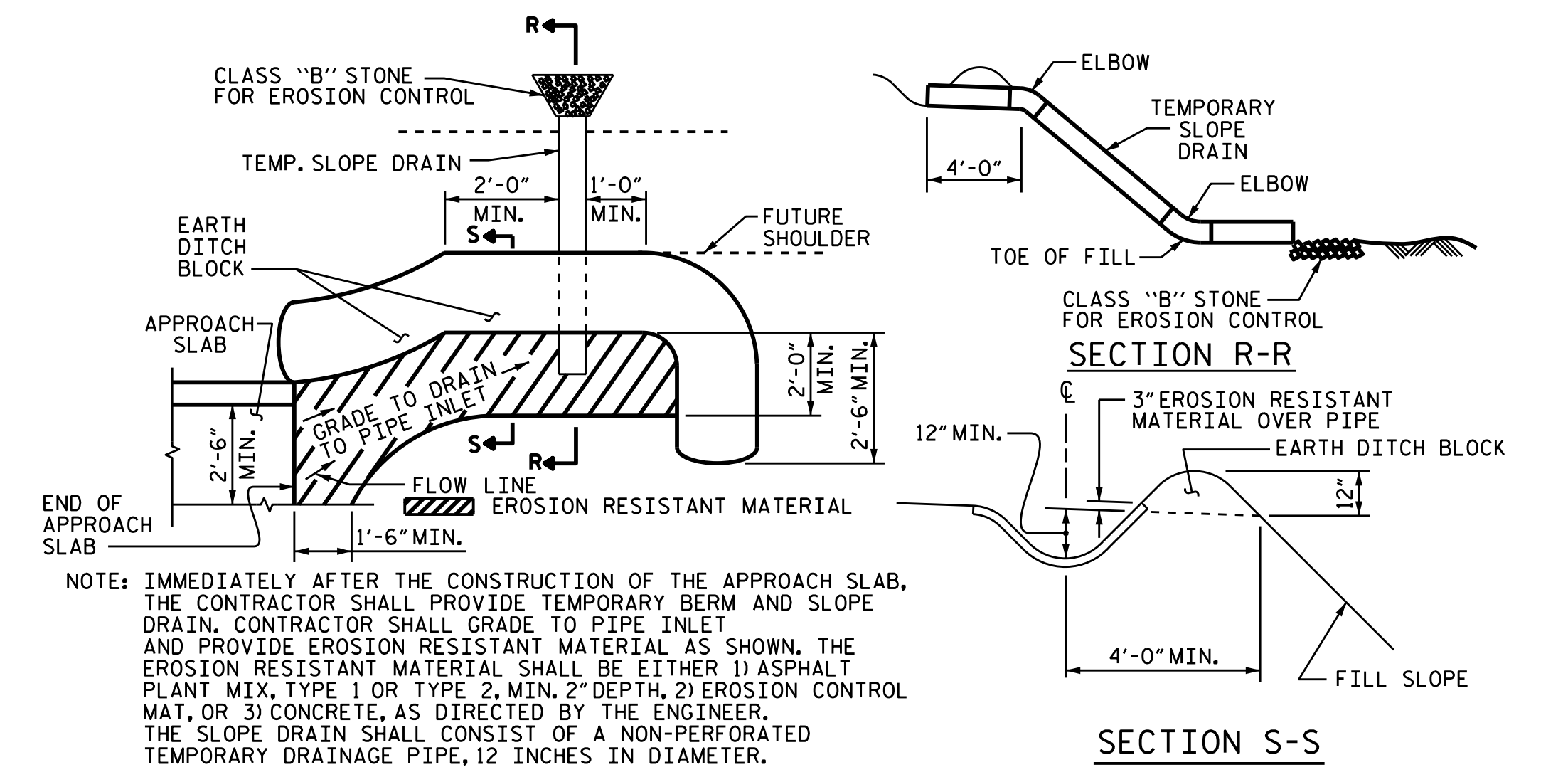


NOTE: IF THE APPROACH SLAB IS NOT CONSTRUCTED IMMEDIATELY AFTER THE BACKFILLING OF THE END BENT EXCAVATION, GRADE TO DRAIN TO THE BOTTOM OF THE SLOPE AND PROVIDE EROSION RESISTANT MATERIAL, SUCH AS FIBERGLASS ROVING OR AS DIRECTED BY THE ENGINEER TO PREVENT SOIL EROSION AND TO PROTECT THE AREA ADJACENT TO THE STRUCTURE. THE CONTRACTOR WILL BE REQUIRED TO REMOVE THESE MATERIALS PRIOR TO CONSTRUCTION OF THE APPROACH SLAB.

TEMPORARY DRAINAGE DETAIL

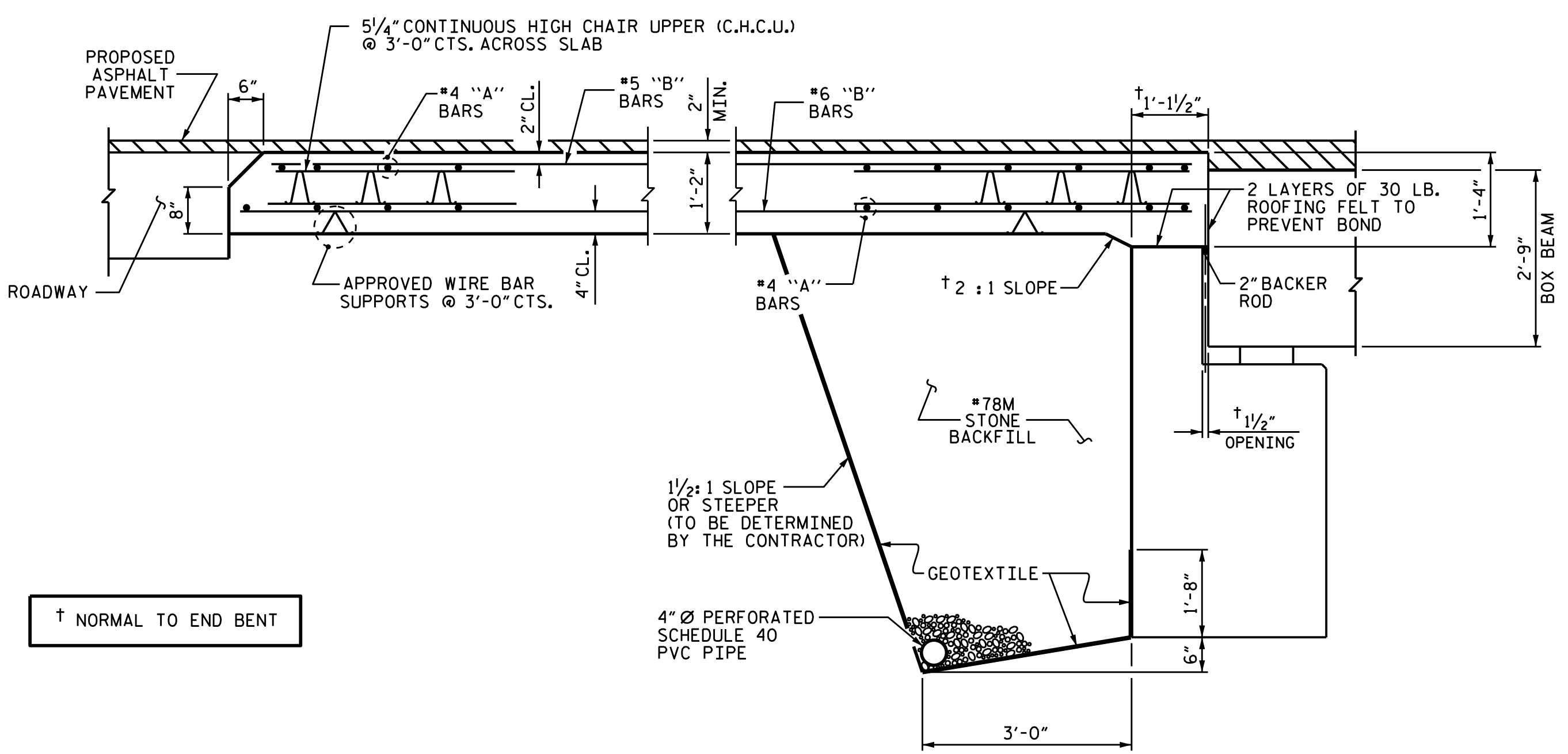
BILL OF MATERIAL					
APPROACH SLAB AT EB 1					
BAR NO.	SIZE	TYPE	LENGTH	WEIGHT	
* A1	26	#4	STR	19'-3"	334
A2	26	#4	STR	19'-1"	331
* B1	63	#5	STR	11'-4"	745
B2	63	#6	STR	11'-9"	1112
REINFORCING STEEL				LBS.	1,443
* EPOXY COATED REINFORCING STEEL				LBS.	1,079
CLASS AA CONCRETE				C. Y.	16.9
APPROACH SLAB AT EB 2					
BAR NO.	SIZE	TYPE	LENGTH	WEIGHT	
* A1	26	#4	STR	19'-3"	334
A2	26	#4	STR	19'-1"	331
* B1	63	#5	STR	11'-4"	745
B2	63	#6	STR	11'-9"	1112
REINFORCING STEEL				LBS.	1,443
* EPOXY COATED REINFORCING STEEL				LBS.	1,079
CLASS AA CONCRETE				C. Y.	17.0

SPLICE LENGTHS			
BAR SIZE	EPOXY COATED	UNCOATED	
#4	2'-0"	1'-9"	

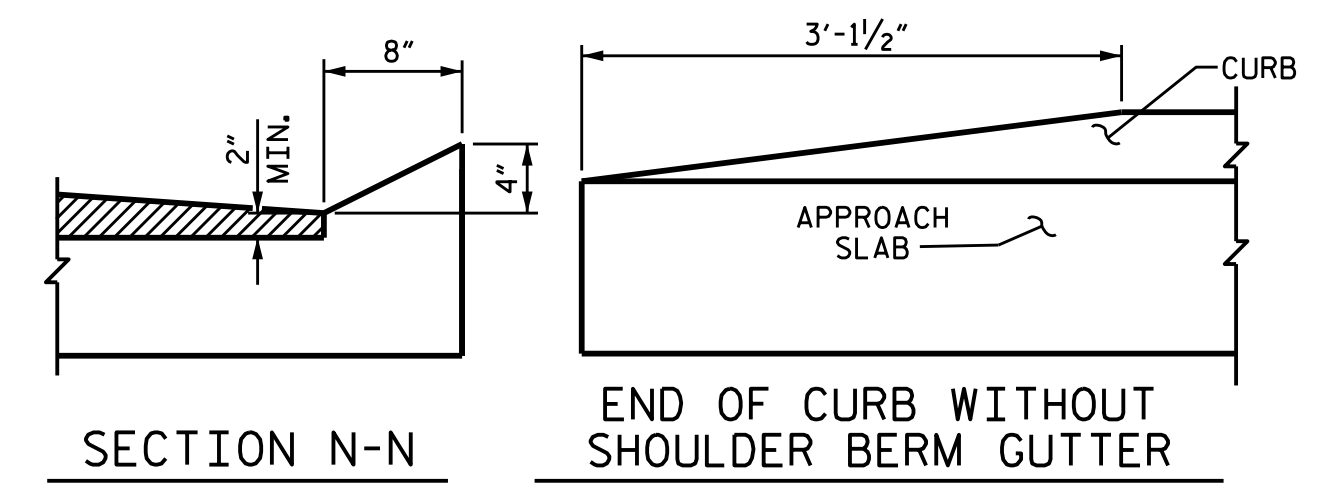


NOTE: IMMEDIATELY AFTER THE CONSTRUCTION OF THE APPROACH SLAB, THE CONTRACTOR SHALL PROVIDE TEMPORARY BERM AND SLOPE DRAIN. CONTRACTOR SHALL GRADE TO PIPE INLET AND PROVIDE EROSION RESISTANT MATERIAL AS SHOWN. THE EROSION RESISTANT MATERIAL SHALL BE EITHER 1) ASPHALT PLANT MIX, TYPE 1 OR TYPE 2, MIN. 2" DEPTH, 2) EROSION CONTROL MAT, OR 3) CONCRETE, AS DIRECTED BY THE ENGINEER. THE SLOPE DRAIN SHALL CONSIST OF A NON-PERFORATED TEMPORARY DRAINAGE PIPE, 12 INCHES IN DIAMETER.

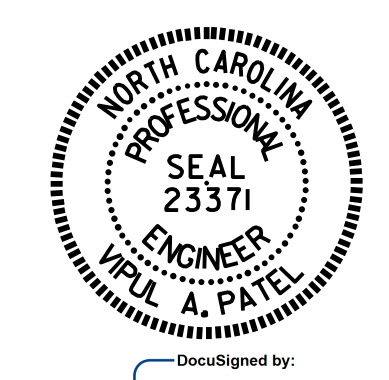
PLAN VIEW
TEMPORARY BERM AND SLOPE DRAIN DETAILS
(TO BE USED WHEN SHOULDER BERM GUTTER IS REQUIRED)



SECTION THROUGH SLAB



CURB DETAILS



PROJECT NO. B-4751
GASTON COUNTY
 STATION: 15+53.00 -L-

STATE OF NORTH CAROLINA DEPARTMENT OF TRANSPORTATION RALEIGH					
BRIDGE APPROACH SLAB FOR PRESTRESSED CONCRETE BOX BEAM UNIT (SUB-REGIONAL TIER)					
120° SKEW					
REVISIONS					SHEET NO.
NO.	BY:	DATE:	NO.	BY:	DATE:
1			3		
2			4		
TOTAL SHEETS					19

ASSEMBLED BY: N.D. AIUTO DATE: 1/28/15
 CHECKED BY: T.H. CARROLL DATE: 3/6/15
 DESIGN ENGINEER OF RECORD: N.D. AIUTO DATE: 3/6/15

DOCUMENT NOT CONSIDERED
 FINAL UNLESS ALL
 SIGNATURES COMPLETED