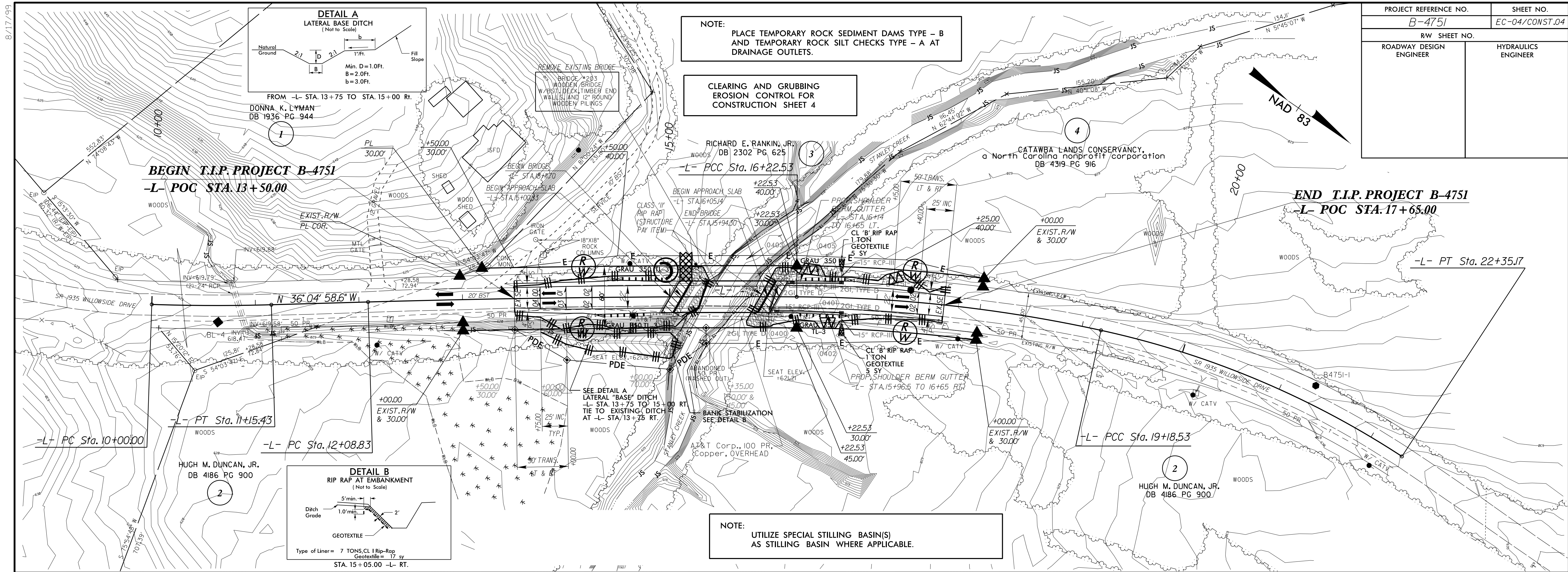


PROJECT REFERENCE NO. B-4751	SHEET NO. EC-04/CONST.04
RW SHEET NO.	HYDRAULICS ENGINEER
ROADWAY DESIGN ENGINEER	



**-L- SR 1935
WILLOWSIDE DR.**

BRIDGE HYDRAULIC DATA

DESIGN DISCHARGE	= 2000	CFS
DESIGN FREQUENCY	= 25	YRS
DESIGN HW ELEVATION	= 619.1	FT
BASE DISCHARGE	= 3559	CFS
BASE FREQUENCY	= 100	YRS
BASE HW ELEVATION	= 621.26	FT
OVERTOPPING DISCHARGE	= 4668	CFS
OVERTOPPING FREQUENCY	= 500+	YRS
OVERTOPPING ELEVATION	= 623.3	FT
	=	FT
DATE OF SURVEY	= 05/28/14	
W.S. ELEVATION AT DATE OF SURVEY	= 610.2	FT

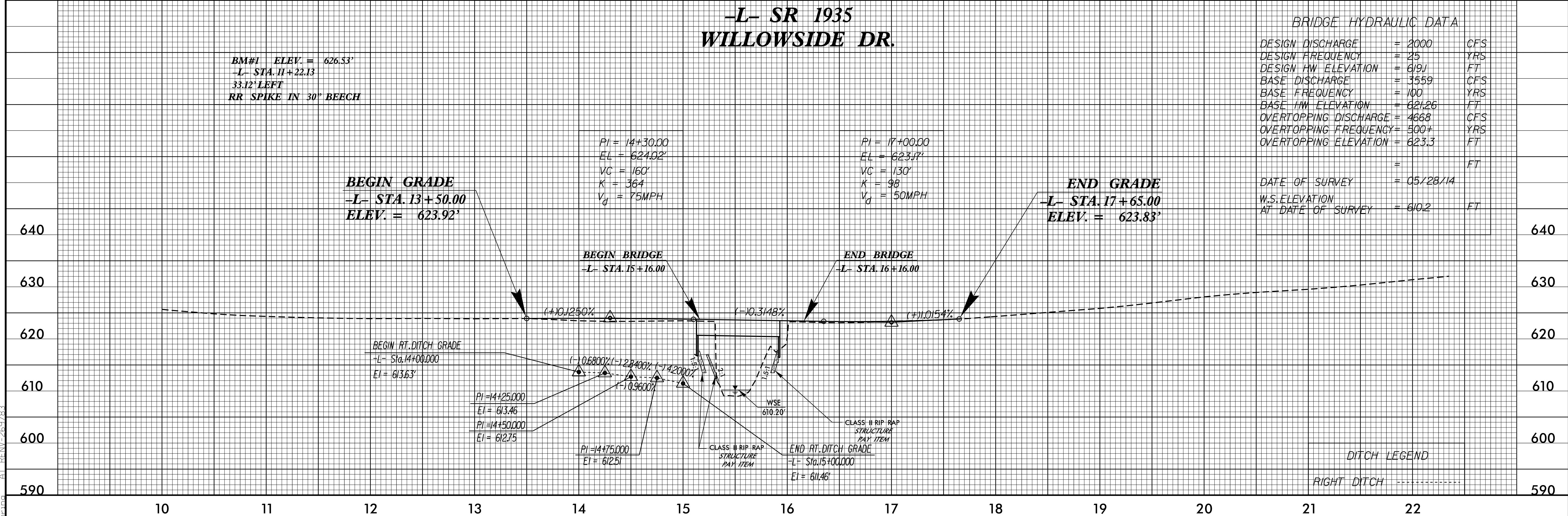
BM#1 ELEV. = 626.53'
-L- STA. 11+22.13
33.12' LEFT
RR SPIKE IN 30' BEECH

PI = 14+30.00
EL = 624.02'
VC = 160'
K = 364
V_d = 75MPH

PI = 17+00.00
EL = 623.17'
VC = 130'
K = 98
V_d = 50MPH

BEGIN GRADE
-L- STA. 13+50.00
ELEV. = 623.92'

END GRADE
-L- STA. 17+65.00
ELEV. = 623.83'



DITCH LEGEND
RIGHT DITCH -----

8/17/99
23 NOV 2015 12:42
C:\Users\j... \Desktop\B4751-EC-04-const-4.dgn
269783