

NOTES

ALL REINFORCING STEEL IN THE CLASSIC CONCRETE BRIDGE RAIL SHALL BE EPOXY COATED.

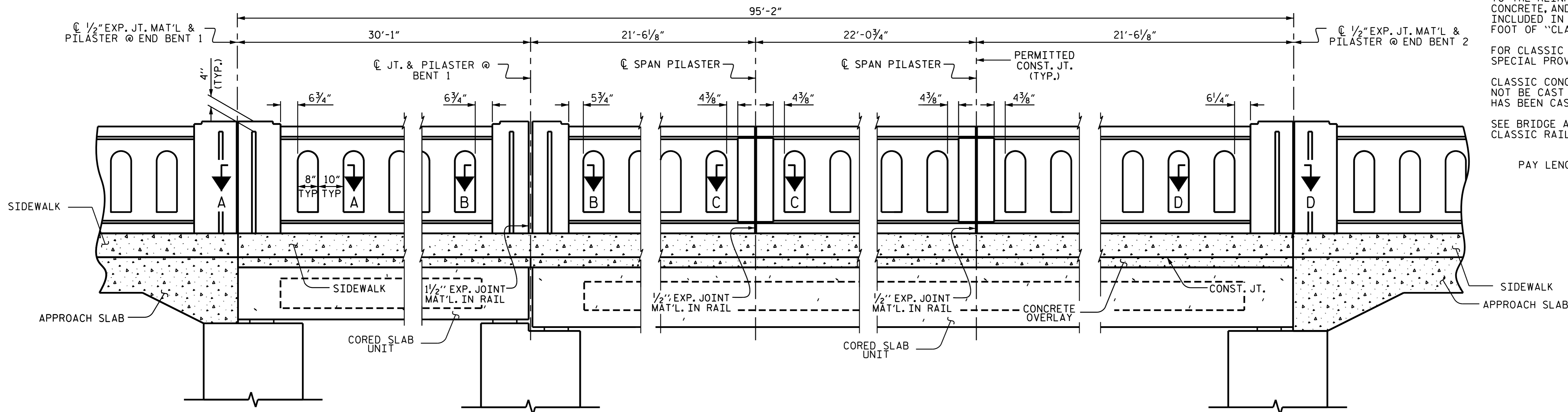
ALL PARTS OF THE CLASSIC CONCRETE BRIDGE RAIL INCLUDING BUT NOT LIMITED TO THE REINFORCING STEEL, CLASS AA CONCRETE, AND INCIDENTALS SHALL BE INCLUDED IN THE UNIT PRICE BID PER FOOT OF "CLASSIC CONCRETE BRIDGE RAIL".

FOR CLASSIC CONCRETE BRIDGE RAIL, SEE SPECIAL PROVISIONS.

CLASSIC CONCRETE BRIDGE RAILS SHALL NOT BE CAST UNTIL THE SIDEWALK CONCRETE HAS BEEN CAST AND CURED.

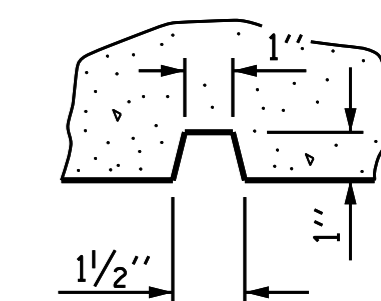
SEE BRIDGE APPROACH SLAB SHEETS, FOR CLASSIC RAIL ON APPROACH SLABS.

PAY LENGTH = 190.25 LIN. FT.

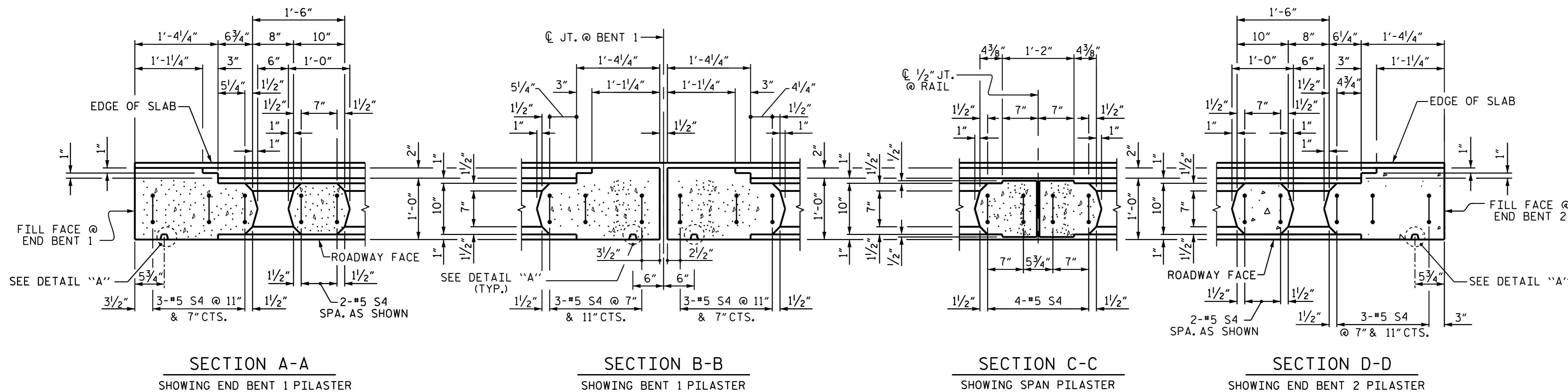


ROADWAY ELEVATION OF RAIL

CHAMFERS NOT SHOWN FOR CLARITY



DETAIL "A"



PARTIAL PLAN

LEFT SIDE SHOWN, RIGHT SIDE SIMILAR

PROJECT NO. B-5300
BEAUFORT COUNTY
 STATION: 18+77.50 -L-

SHEET 1 OF 4

DocuSigned by:
 A. Keith Paschal
 F8B9AD0823CAF...
 1/19/2016



STATE OF NORTH CAROLINA
 DEPARTMENT OF TRANSPORTATION
 RALEIGH

**CLASSIC CONCRETE
 BRIDGE RAIL AND
 SIDEWALK**

DRAWN BY: P.N.HOLDER DATE: 08/15
 CHECKED BY: K.P.SEDAI DATE: 08/15
 DESIGN ENGINEER OF RECORD: P.N.HOLDER DATE: 09/15

DOCUMENT NOT CONSIDERED
 FINAL UNLESS ALL
 SIGNATURES COMPLETED

REVISIONS						SHEET NO. S-12
NO.	BY:	DATE:	NO.	BY:	DATE:	
1			3			TOTAL SHEETS 30
2			4			