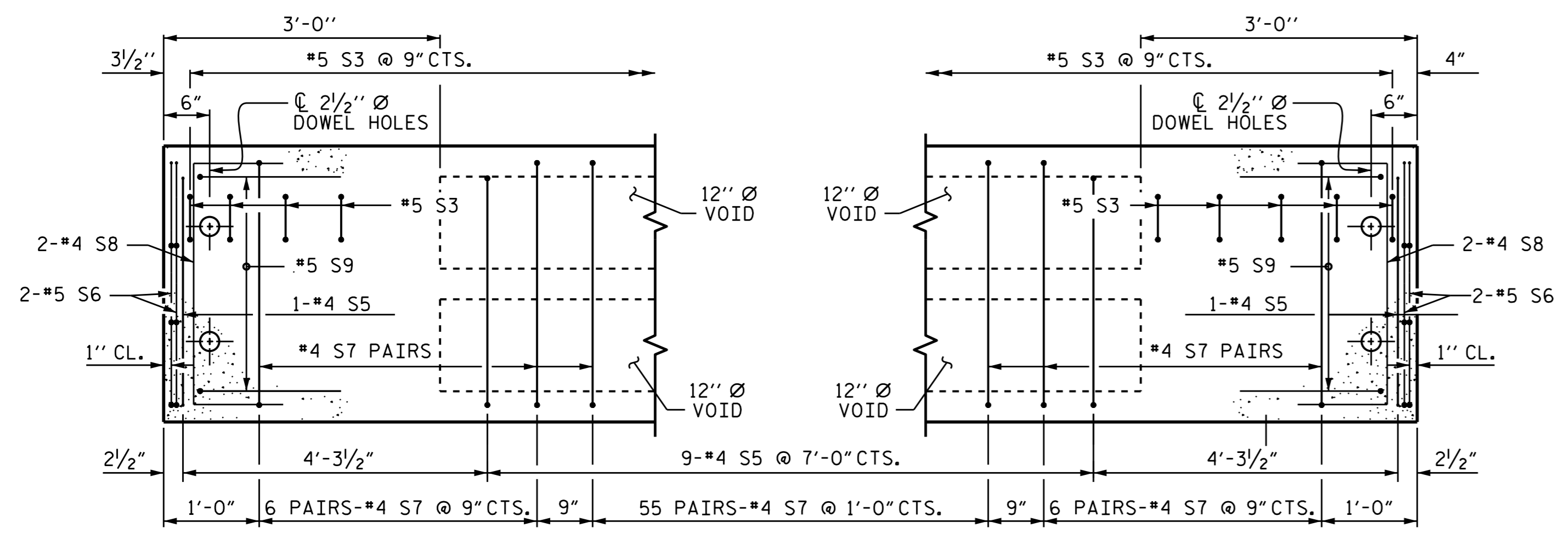


PLAN OF TYPE III CORED SLAB UNIT

FOR LOCATION OF S6 BARS AT ENDS OF SLAB, SEE "DETAIL A"
 FOR LOCATION OF S7 BARS, SEE "PLAN OF TYPE I CORED SLAB UNIT" SHEET 6 OF 7



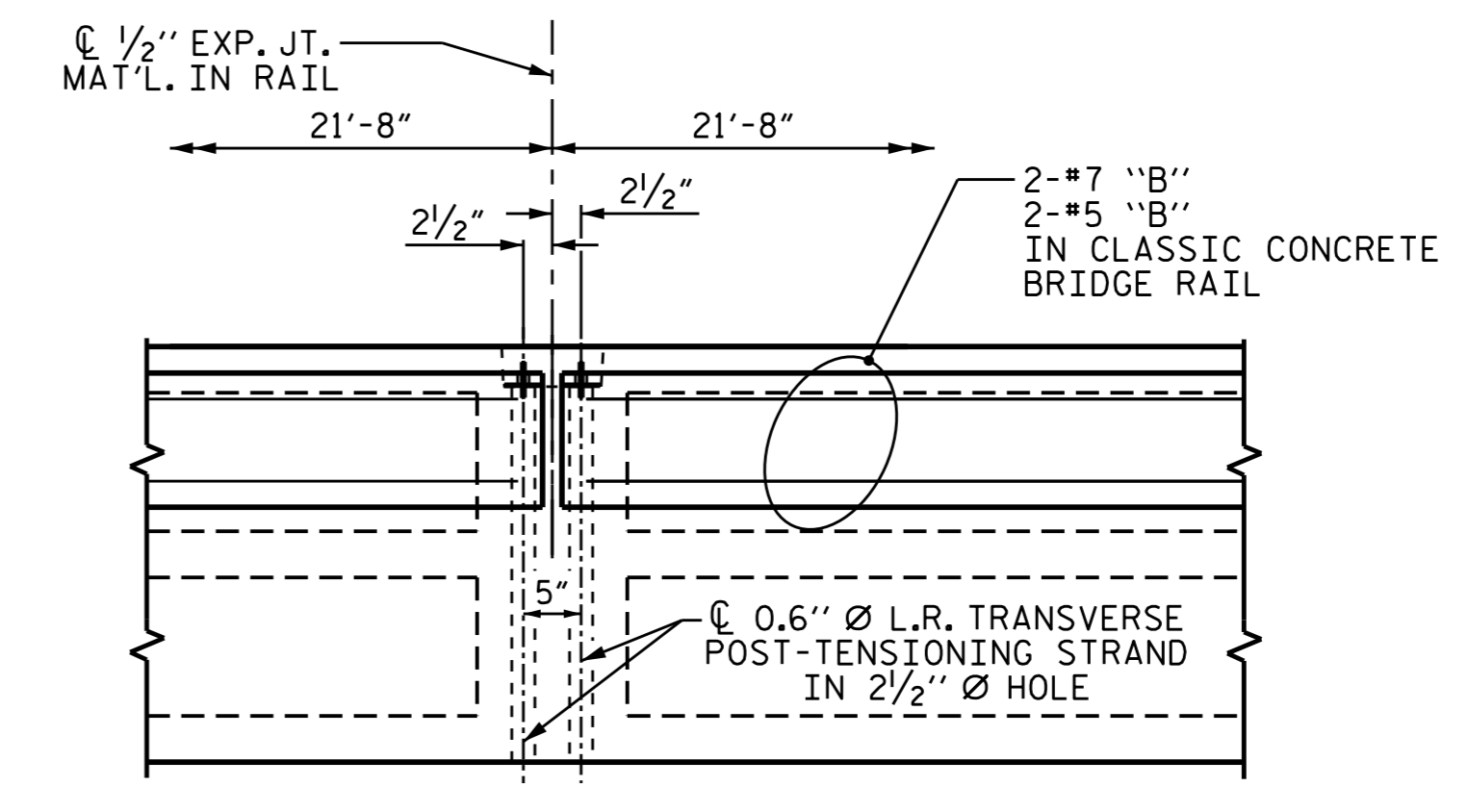
TYPE III @ BENT

TYPE II SIMILAR EXCEPT OMIT S3 BARS
 TYPE I SIMILAR EXCEPT OMIT S3 & S5 BARS

TYPE III @ END BENT

TYPE II SIMILAR EXCEPT OMIT S3 BARS
 TYPE I SIMILAR EXCEPT OMIT S3 & S5 BARS

DETAIL "A"



DETAIL "B"

#4 S7 BARS MAY BE SHIFTED AS NECESSARY
 TO MAINTAIN 1" CLEAR TO GROUTED RECESS AND
 2 1/2" TRANSVERSE POST-TENSIONING STRAND HOLES

PROJECT NO. B-5300
BEAUFORT COUNTY
 STATION: 18+77.50 -L-

SHEET 7 OF 7

Designed by:
A. Keith Paschal
 1/19/2016



STATE OF NORTH CAROLINA
 DEPARTMENT OF TRANSPORTATION
 RALEIGH

SUPERSTRUCTURE

**PLAN OF 65' UNIT
 SPAN "B" DETAILS**

DRAWN BY :	P.N.HOLDER	DATE :	07/15
CHECKED BY :	K.P.SEDAI	DATE :	08/17/15
DESIGN ENGINEER OF RECORD :	P.N.HOLDER	DATE :	09/01/15

DOCUMENT NOT CONSIDERED
 FINAL UNLESS ALL
 SIGNATURES COMPLETED

REVISIONS						SHEET NO. S-11 TOTAL SHEETS 30
NO.	BY:	DATE:	NO.	BY:	DATE:	
1			3			
2			4			