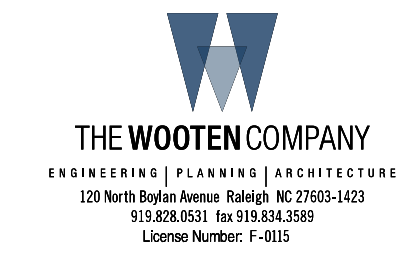


5/28/19

WATER LINES OWNED BY BEAUFORT COUNTY SEWER LINES OWNED BY TOWN OF BELHAVEN

PREPARED IN THE OFFICE OF:



PROJECT REFERENCE NO.

B-5300

SHEET NO.

UC-5

DESIGNED BY: JRG

DRAWN BY: TK

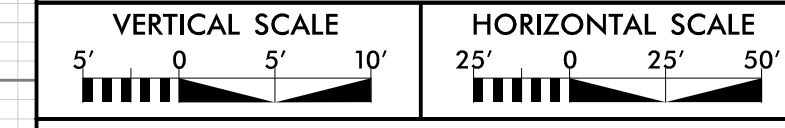
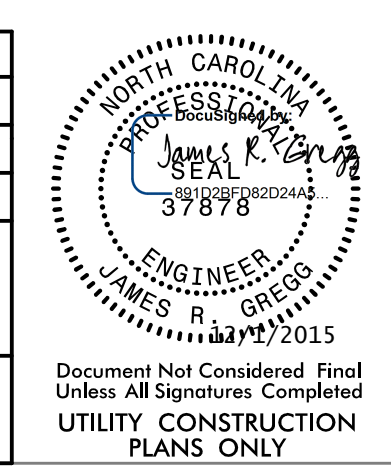
CHECKED BY: JRG

APPROVED BY: MDS

REVISED:

NORTH CAROLINA
DEPARTMENT OF
TRANSPORTATION

UTILITIES ENGINEERING SEC.
PHONE: (919) 707-6690
FAX: (919) 250-4151



WATER AND SEWER LINE
CONSTRUCTION SHOWN
ON THIS SHEET

UTILITY CONSTRUCTION

10

0

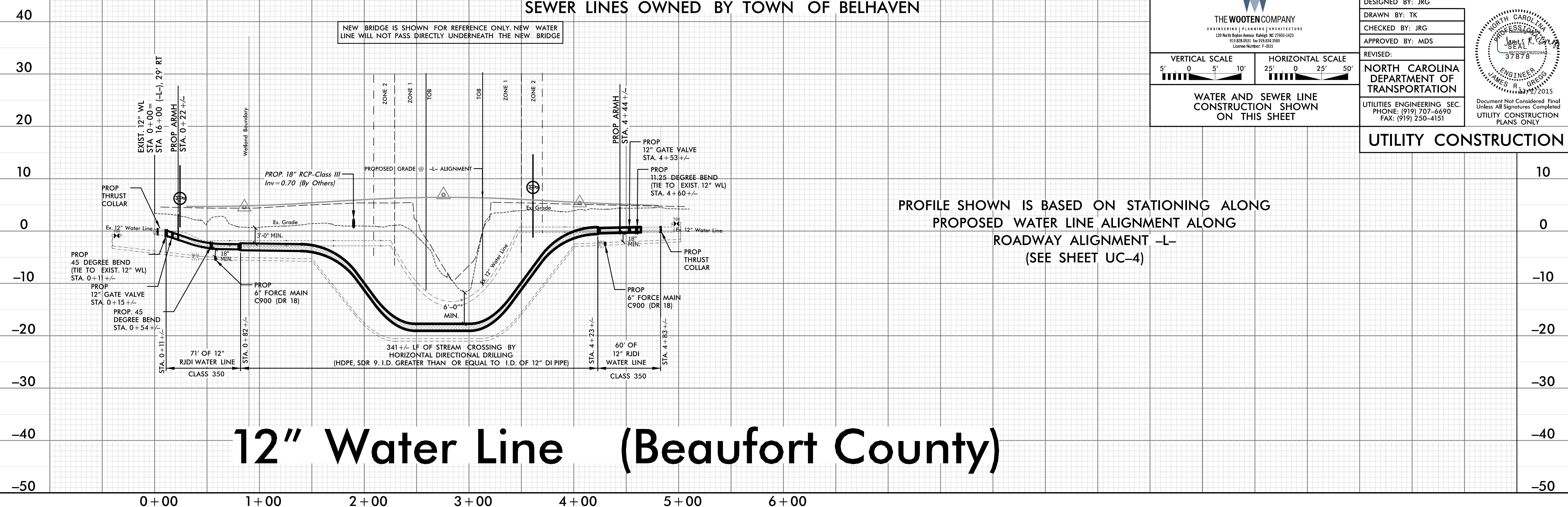
-10

-20

-30

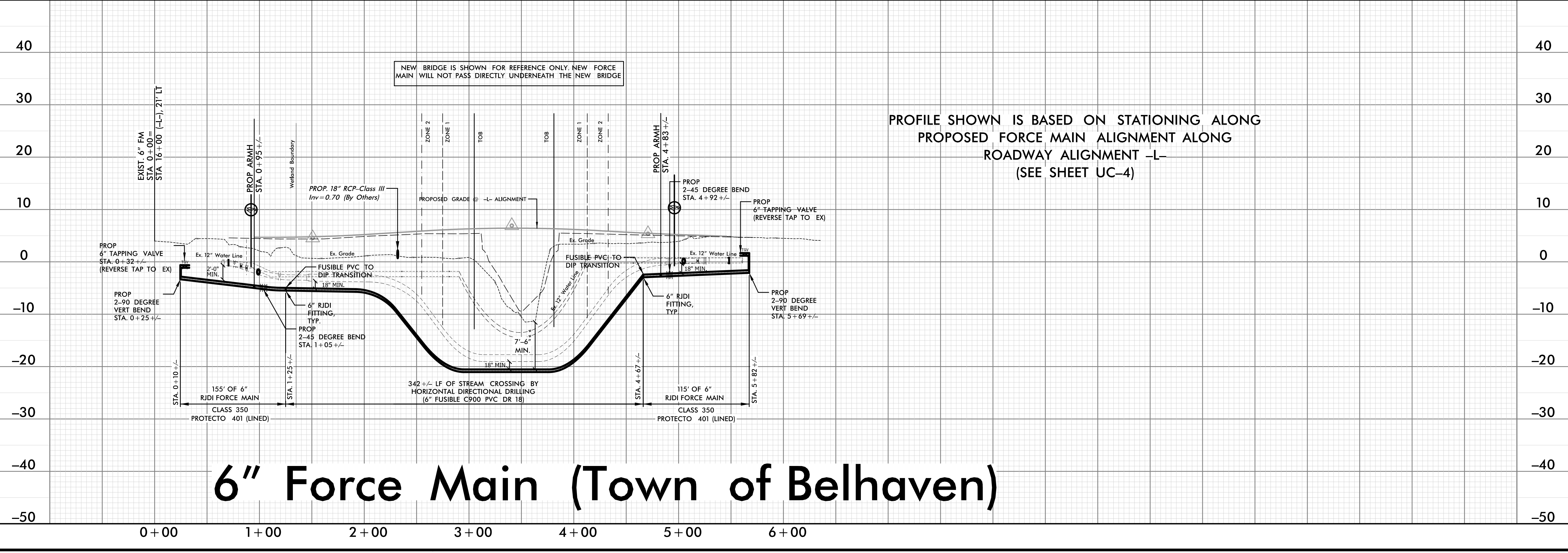
-40

-50



PROFILE SHOWN IS BASED ON STATIONING ALONG
PROPOSED WATER LINE ALIGNMENT ALONG
ROADWAY ALIGNMENT -L-
(SEE SHEET UC-4)

12" Water Line (Beaufort County)



PROFILE SHOWN IS BASED ON STATIONING ALONG
PROPOSED FORCE MAIN ALIGNMENT ALONG
ROADWAY ALIGNMENT -L-
(SEE SHEET UC-4)

6" Force Main (Town of Belhaven)

5/28/19