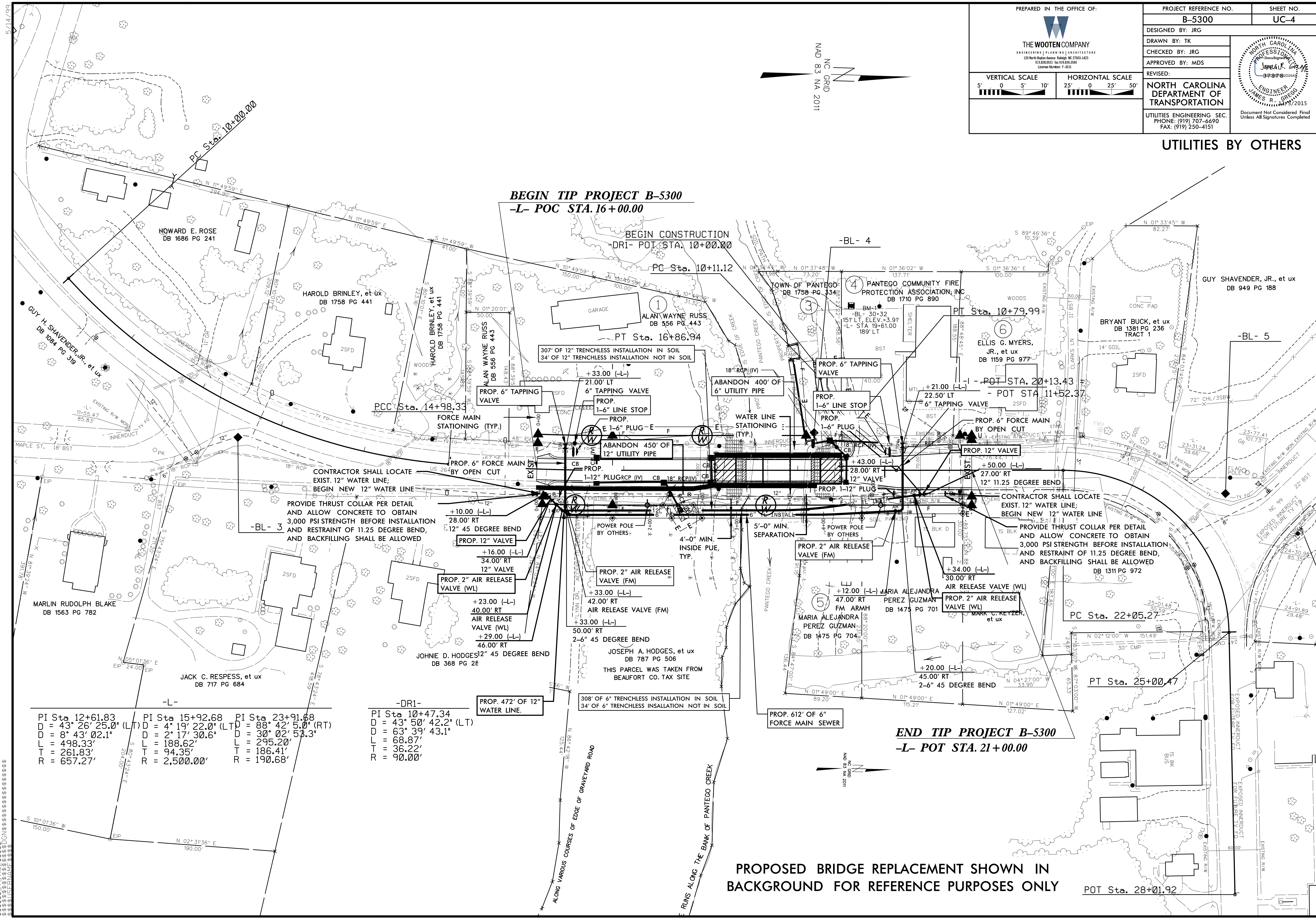


**UTILITIES BY OTHERS**



**BEGIN TIP PROJECT B-5300**  
**-L- POC STA. 16+00.00**

**END TIP PROJECT B-5300**  
**-L- POT STA. 21+00.00**

PI Sta 12+61.83 D = 43° 26' 25.0" (LT) D = 8° 43' 02.1" L = 498.33' T = 261.83' R = 657.27'	PI Sta 15+92.68 D = 4° 19' 22.0" (LT) D = 2° 17' 30.6" L = 188.62' T = 94.35' R = 2,500.00'	PI Sta 23+91.68 D = 88° 42' 5.0" (RT) D = 30° 02' 5.3" L = 295.20' T = 186.41' R = 190.68'
--	--	---

-DR1- PI Sta 10+47.34 D = 43° 50' 42.2" (LT) D = 63° 39' 43.1" L = 68.87' T = 36.22' R = 90.00'
---

**PROPOSED BRIDGE REPLACEMENT SHOWN IN BACKGROUND FOR REFERENCE PURPOSES ONLY**