

6/2/99

PAVEMENT SCHEDULE
(FINAL PAVEMENT DESIGN APRIL 30, 2014)

C1	PROP. APPROX. 1.5" ASPHALT CONCRETE SURFACE COURSE, TYPE S9.5B, AT AN AVERAGE RATE OF 168 LBS. PER SQ. YD.
C2	PROP. APPROX. 3" ASPHALT CONCRETE SURFACE COURSE, TYPE S9.5B, AT AN AVERAGE RATE OF 168 LBS. PER SQ. YD. IN EACH OF TWO LAYERS
C3	PROP. VAR. DEPTH ASPHALT CONCRETE SURFACE COURSE, TYPE S9.5B, AT AN AVERAGE RATE OF 112 LBS. PER SQ. YD. PER 1" DEPTH. TO BE PLACED IN LAYERS NOT LESS THAN 1 1/2" IN DEPTH OR GREATER THAN 2" IN DEPTH
D1	PROP. APPROX. 4" ASPHALT CONCRETE INTERMEDIATE COURSE, TYPE I19.0B, AT AN AVERAGE RATE OF 456 LBS. PER SQ. YD.
D2	PROP. VAR. DEPTH ASPHALT CONCRETE INTERMEDIATE COURSE, TYPE I19.0B, AT AN AVERAGE RATE OF 114 LBS. PER SQ. YD. PER 1" DEPTH, TO BE PLACED IN LAYERS NOT LESS THAN 2 1/2" IN DEPTH OR GREATER THAN 4" IN DEPTH
E1	PROP. APPROX. 4" ASPHALT CONCRETE BASE COURSE, TYPE B25.0B, AT AN AVERAGE RATE OF 456 LBS. PER SQ. YD.
E2	PROP. VAR. DEPTH ASPHALT CONCRETE BASE COURSE, TYPE B25.0B, AT AN AVERAGE RATE OF 114 LBS. PER SQ. YD. PER 1" DEPTH. TO BE PLACED IN LAYERS NOT LESS THAN 3" IN DEPTH OR GREATER THAN 5 1/2" IN DEPTH
L	PROP. APPROX. 2" - 3" OF CLASS IV AGGREGATE STABILIZATION AT AN AVERAGE RATE OF 140 LBS. PER CUBIC FOOT, TO BE PLACED IN LOCATIONS AS DIRECTED BY THE ENGINEER
R	2'-6" CONCRETE CURB AND GUTTER
S	4" CONCRETE SIDEWALK
T	EARTH MATERIAL
U	EXISTING PAVEMENT
W1	VARIABLE DEPTH ASPHALT PAVEMENT SEE STANDARD WEDGING DETAIL

NOTE: PAVEMENT EDGE SLOPES AND TRENCH SECTIONS ARE 1:1 UNLESS SHOWN OTHERWISE.

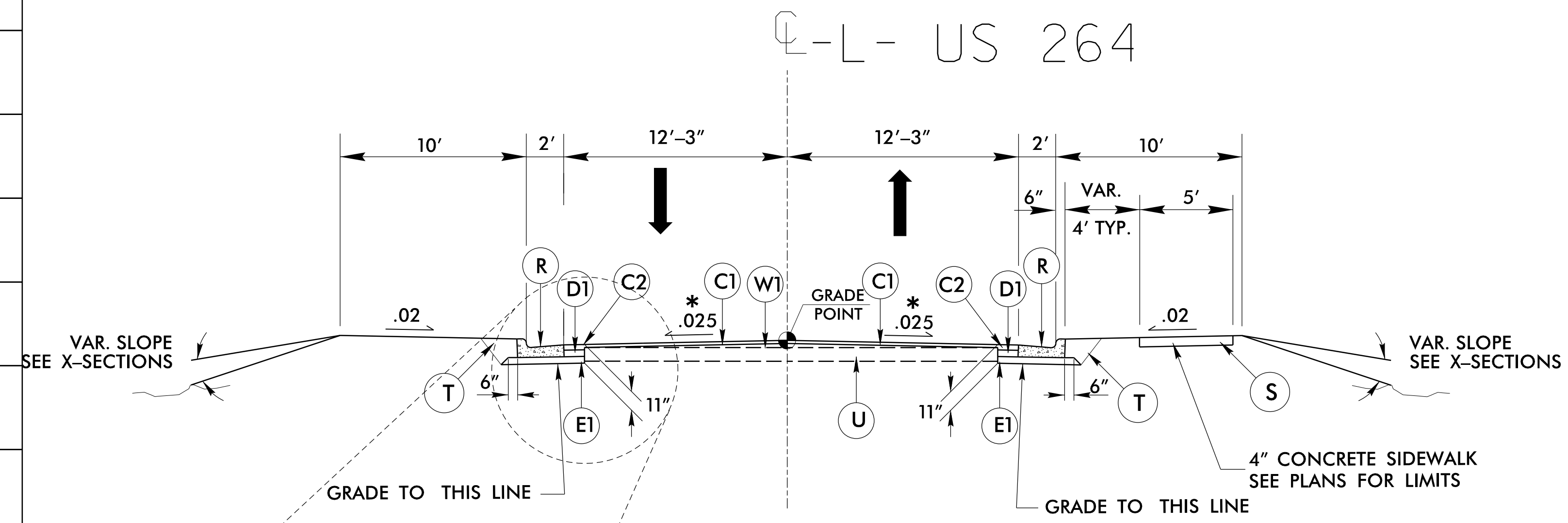


AMEC Foster Wheeler Environment & Infrastructure, Inc.
4021 Stirrup Creek Drive, Suite 100
Durham, North Carolina 27703
NC Engineering F-1253 NC Geology C-247
(919) 381-9900

PROJECT REFERENCE NO. B-5300	SHEET NO. 2A-1
ROADWAY DESIGN ENGINEER W. S. HOOD SEAL 014509 1/6/2016	PAVEMENT DESIGN ENGINEER CLARK S. MORRISON SEAL 022896 5/2016

DOCUMENT NOT CONSIDERED FINAL UNLESS ALL SIGNATURES COMPLETED

*.025 SUPERELEVATION CHOSEN FOR HYDRAULIC SPREAD

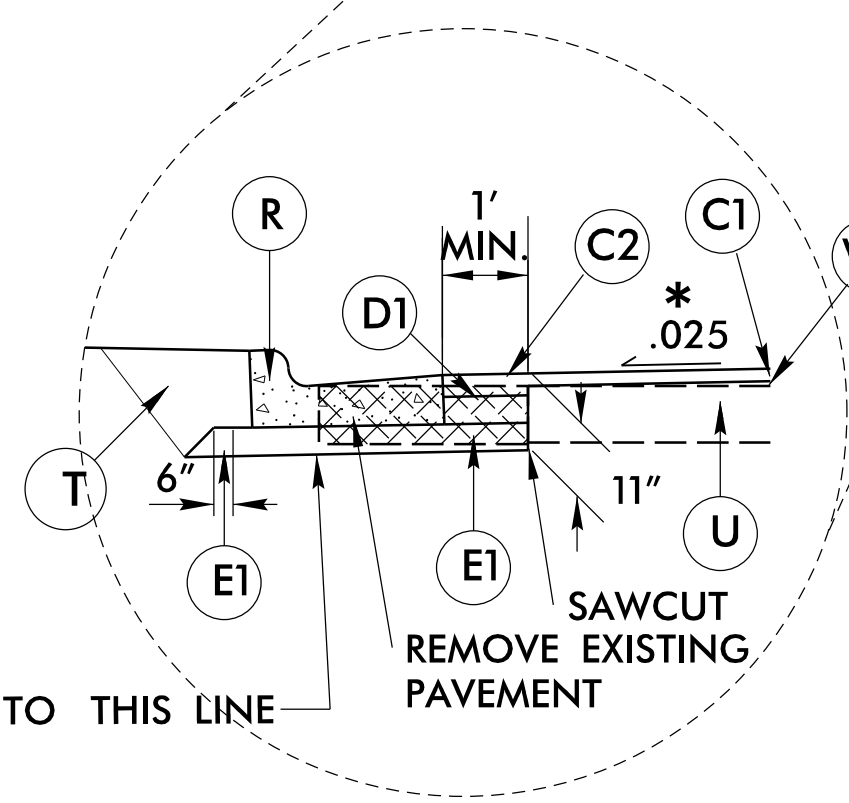


TYPICAL SECTION NO. 1

USE TYPICAL SECTION NO. 1

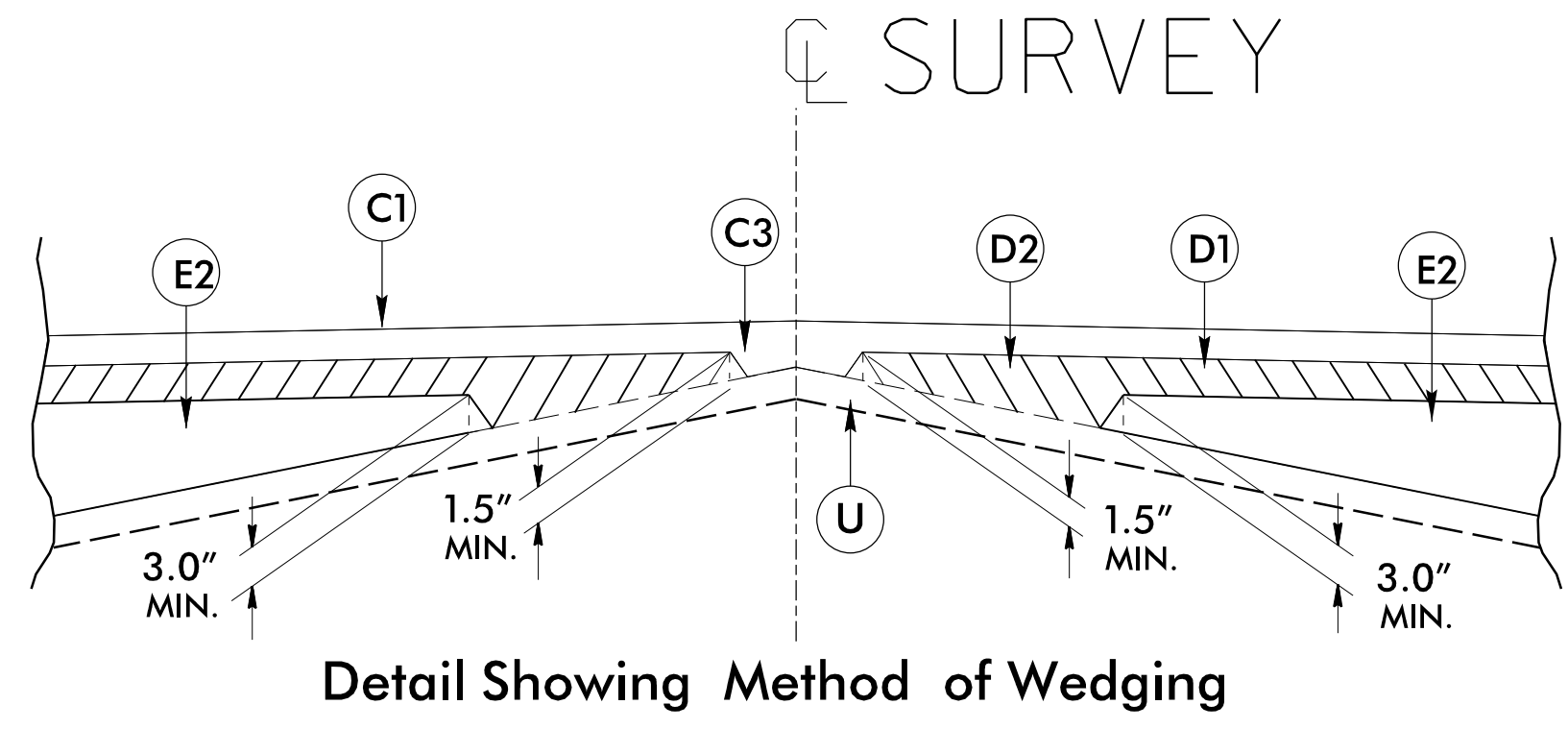
-L- STA. 16+00.00 TO -L- STA. 17+55.00

- NOTE:
- 1) TRANSITION FROM EXISTING PAVED SHOULDER TO PROPOSED CURB AND GUTTER SECTION (SEE PLAN)
 - 2) TRANSITION SIDEWALK FROM EXISTING SHOULDER AT -L- STA. 16+00.00 TO PROPOSED BERM

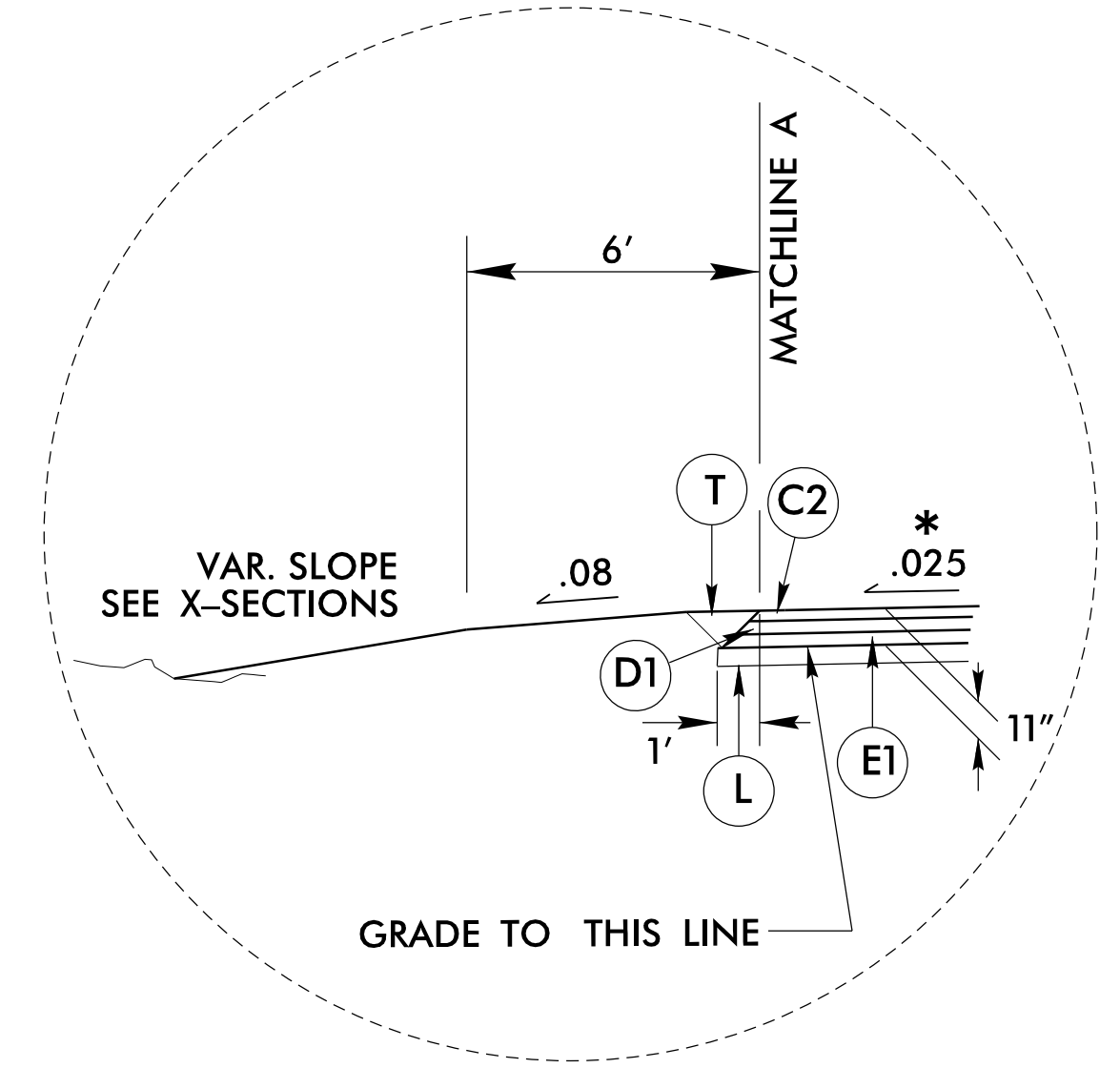


INSET "A"

USE IN CONJUNCTION WITH TYPICAL SECTION NO. 1 -L- STA. 16+15.00 TO -L- STA. 17+55.00 LT & RT
USE IN CONJUNCTION WITH TYPICAL SECTION NO. 3 -L- STA. 20+00.00 TO -L- STA. 21+00.00 RT

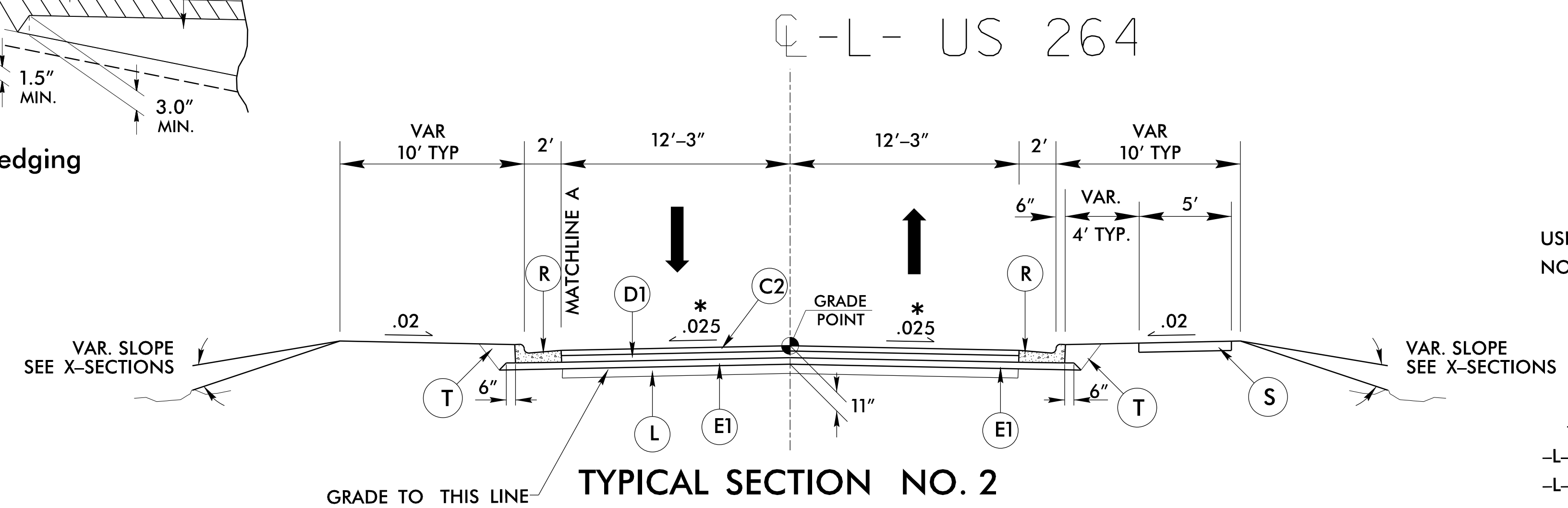


Detail Showing Method of Wedging



INSET "B"

USE IN CONJUNCTION WITH TYPICAL SECTION NO. 2 -L- STA. 19+26.19 (END BRIDGE) TO -L- STA. 20+00.00 LT



TYPICAL SECTION NO. 2

USE TYPICAL SECTION NO. 2

-L- STA. 17+55.00 TO -L- STA. 18+28.81 (BEGIN BRIDGE)
-L- STA. 19+26.19 (END BRIDGE) TO -L- STA. 20+00.00

28-DEC-2015 10:03 R:\B66664\B-5300_Rdy_tjw.dgn billboard