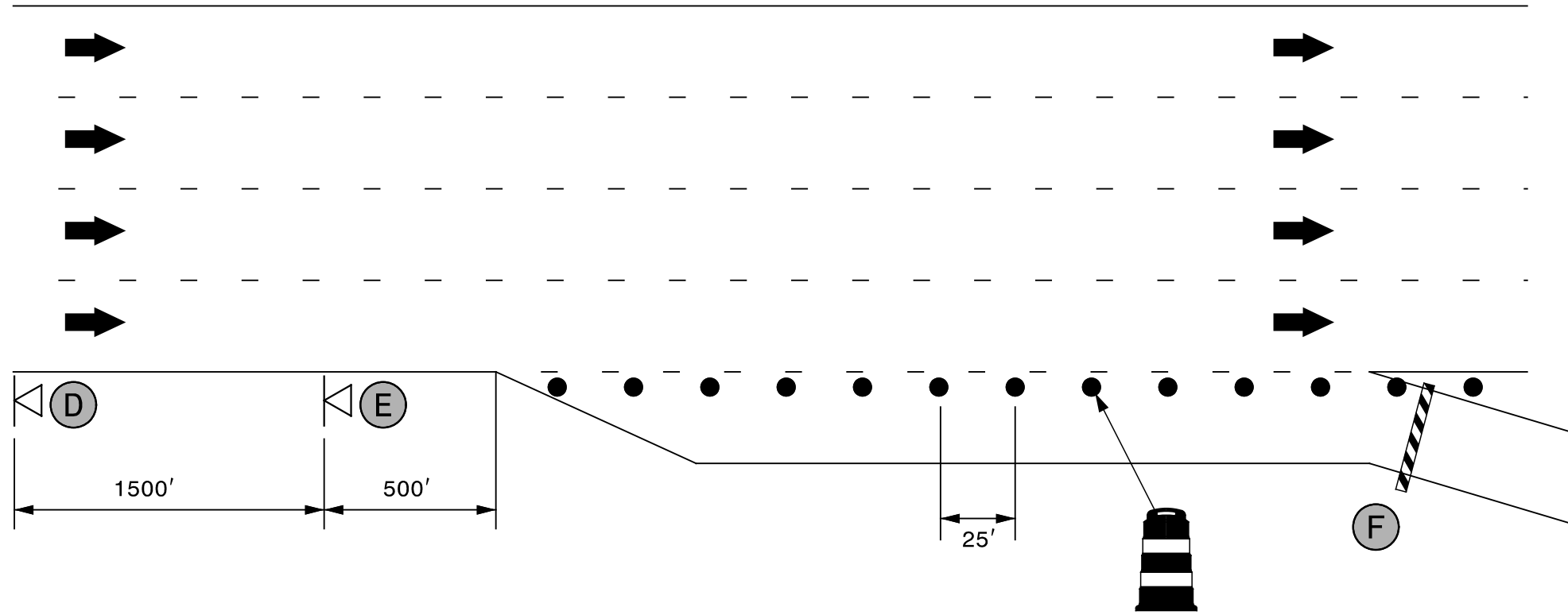
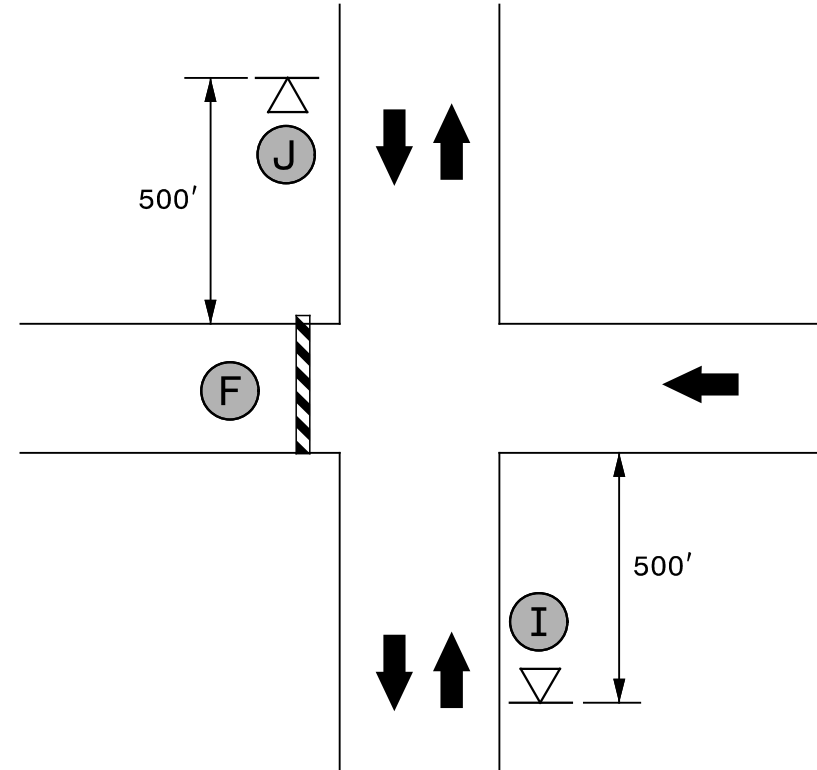


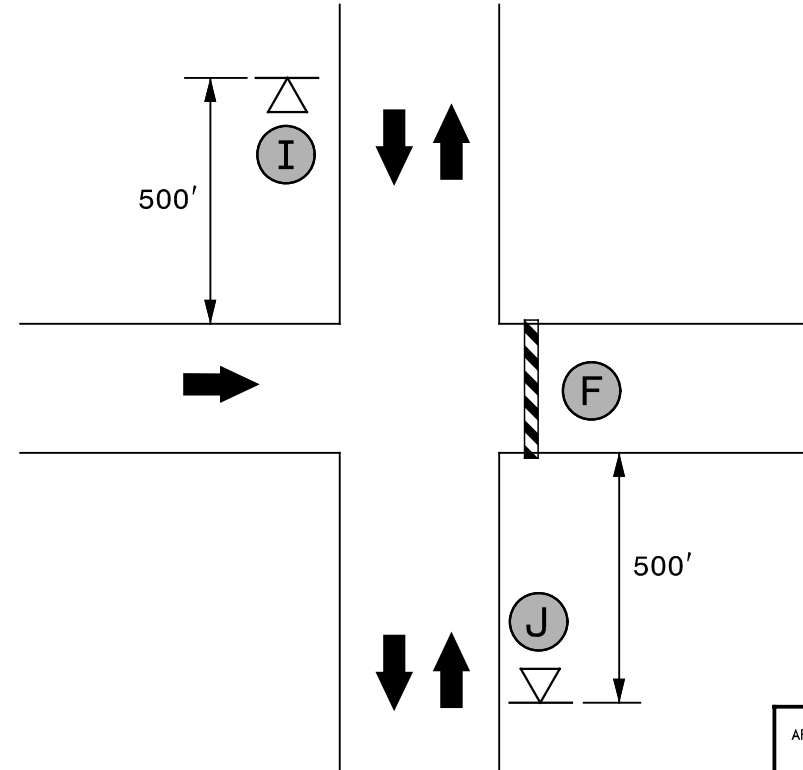
# RAMP A, RAMP C CLOSURE



## RAMP B, LOOP C CLOSURE



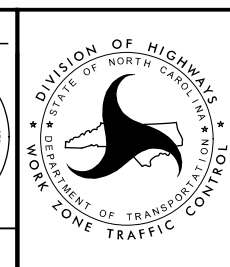
## RAMP D CLOSURE



NOTE: SEE TMP-2 FOR SIGN LEGEND

DocuSigned by:

APPROVED: *Steve Miller*  
 DATE: 12/7/2015  
 SEAL  
 DOCUMENT NOT CONSIDERED FINAL  
 UNLESS ALL SIGNATURES COMPLETED



SEAL  
 DIVISION OF HIGHWAYS  
 STATE OF NORTH CAROLINA  
 DEPARTMENT OF TRANSPORTATION  
 WORK ZONE TRAFFIC CONTROL  
 RAMP CLOSURE TYPICAL

**SEPI**  
 ENGINEERING & CONSTRUCTION  
 1025 Wade Avenue  
 Raleigh, NC 27605  
 Tel: 919-789-9977  
 Fax: 919-789-9591  
 License: C-2197

12/7/2015 10:11:15 AM G:\Tr\aff\I-5309 & I-5836 TMP\TMP-I-5309\_5836 TMP-19.dgn