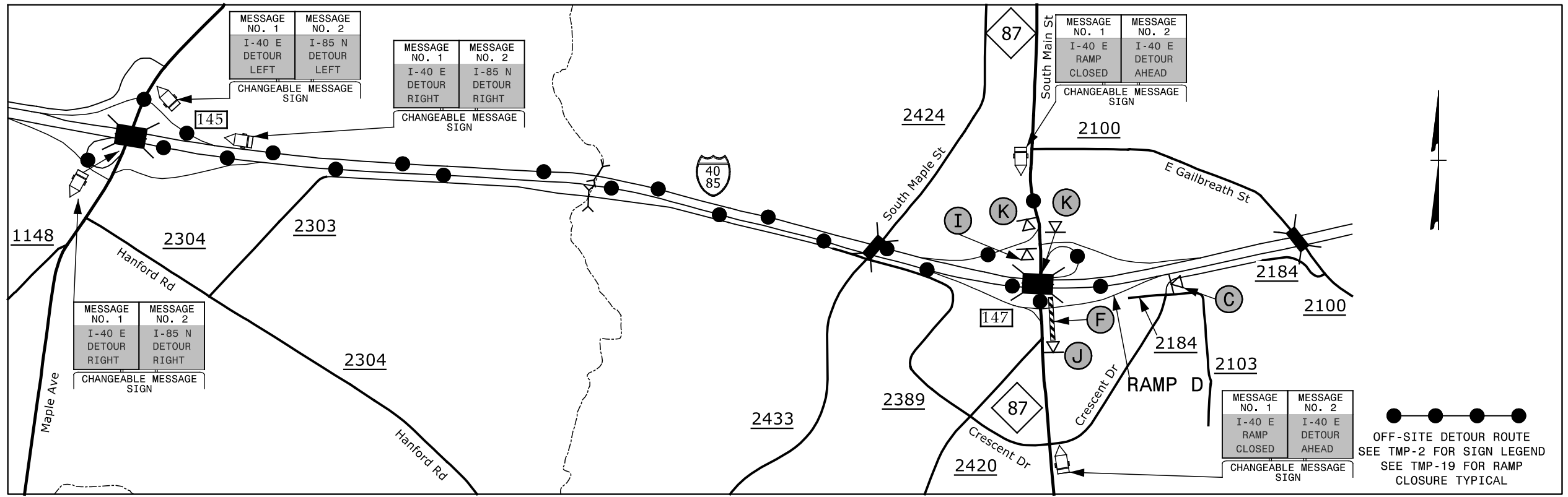


EXIT 147 RAMP D - I-40/I-85

PROJ. REFERENCE NO.	SHEET NO.
I-5309/I-5836	TMP-15



OFF-SITE DETOUR ROUTE
SEE TMP-2 FOR SIGN LEGEND
SEE TMP-19 FOR RAMP
CLOSURE TYPICAL

12/1/2015 12:17:01 PM G:\Tr\aff\I-5309 & I-5836 TMP\I-5309_5836 TMP-15.dgn

SEPI
ENGINEERING & CONSTRUCTION

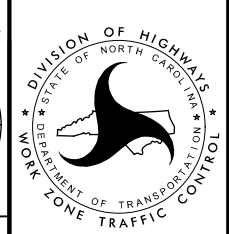
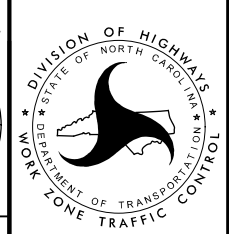
1025 Wade Avenue
Raleigh, NC 27605
Tel: 919-789-9977
Fax: 919-789-9591
License: C-2197

DocuSigned by:
Steve Miller

APPROVED: *Steve Miller*
DATE: 12/7/2015

SEAL

DOCUMENT NOT CONSIDERED FINAL
UNLESS ALL SIGNATURES COMPLETED



**EXIT 147
SOUTH MAIN STREET
DETOUR**