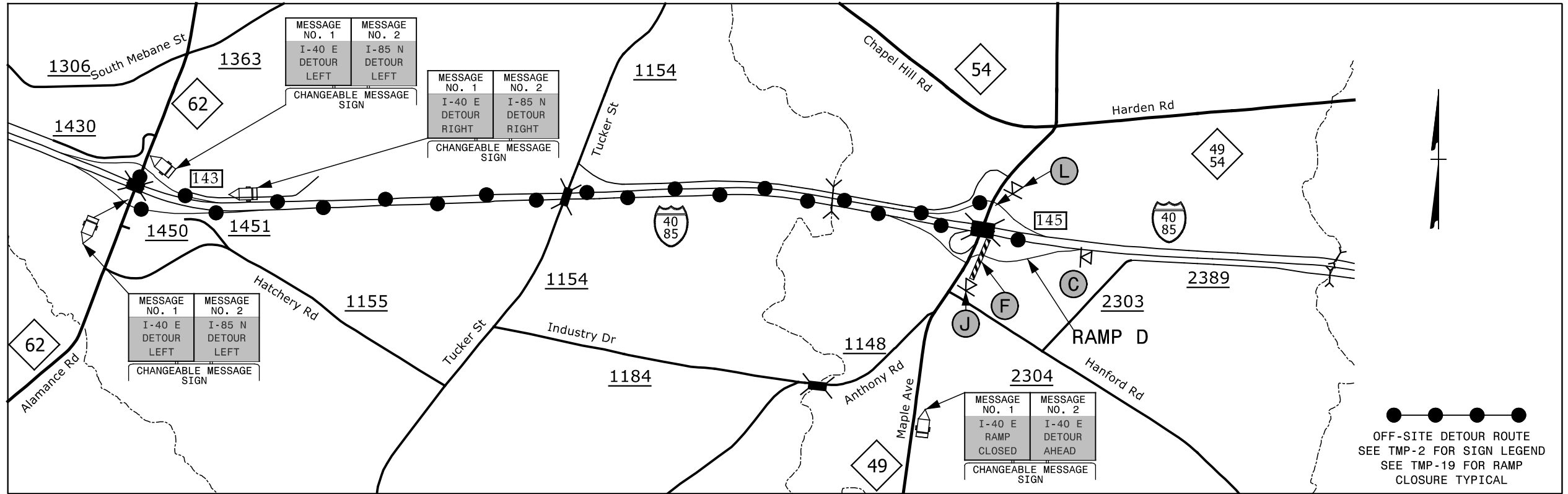


# EXIT 145 RAMP D - I-40/I-85

PROJ. REFERENCE NO.	SHEET NO.
I-5309/I-5836	TMP-12



12/1/2015 12:00:00 PM G:\Tr\aff\I-5309 & I-5836 TMP\TMP-I-5309\_5836 TMP-12.dgn

**SEPI**  
ENGINEERING & CONSTRUCTION

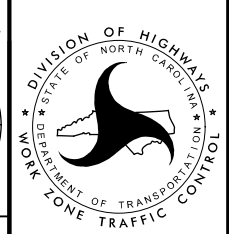
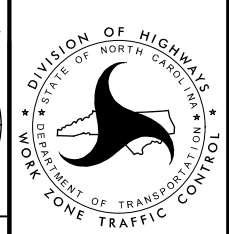
1025 Wade Avenue  
Raleigh, NC 27605  
Tel: 919-789-9977  
Fax: 919-789-9591  
License: C-2197

DocuSigned by:  
*Steve Miller*

APPROVED: *Steve Miller*  
DATE: 12/7/2015

SEAL

**DOCUMENT NOT CONSIDERED FINAL  
UNLESS ALL SIGNATURES COMPLETED**



**EXIT 145  
MAPLE AVENUE  
DETOUR**