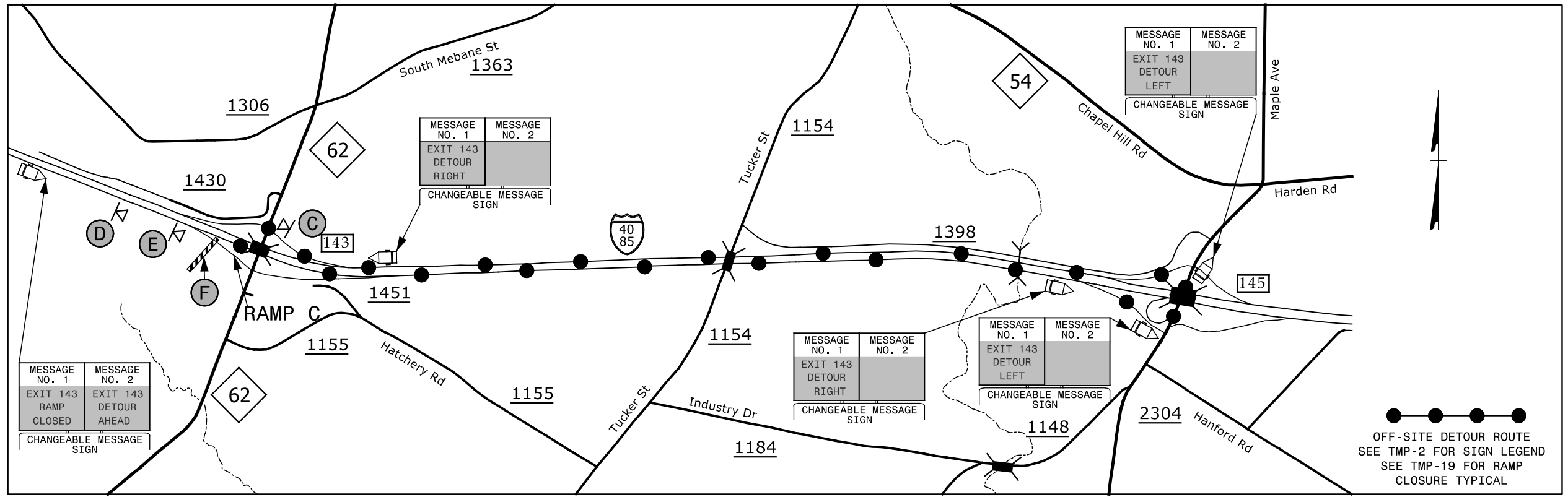
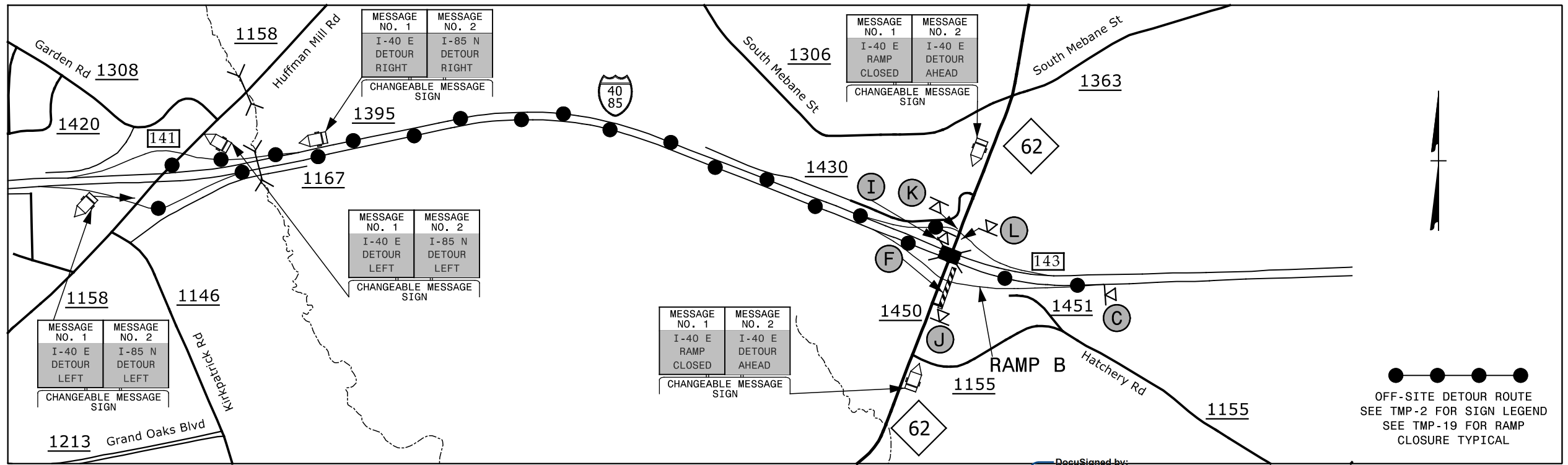


### EXIT 143 RAMP C - I-40/I-85



### EXIT 143 RAMP D - I-40/I-85



12/1/2015 12:17:20 PM G:\Tr\aff\I-5309 & I-5836 TMP\TMP-I-5309\_5836 TMP-9.dgn

**SEPI**  
ENGINEERING & CONSTRUCTION

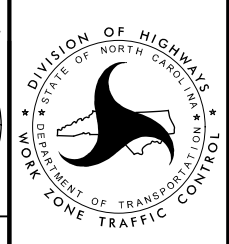
1025 Wade Avenue  
Raleigh, NC 27605  
Tel: 919-789-9977  
Fax: 919-789-9591  
License: C-2197

DocuSigned by:  
*Steve Miller*

APPROVED: *Steve Miller*  
DATE: 12/7/2015

SEAL

DOCUMENT NOT CONSIDERED FINAL  
UNLESS ALL SIGNATURES COMPLETED



**EXIT 143  
ALAMANCE ROAD  
DETOUR**