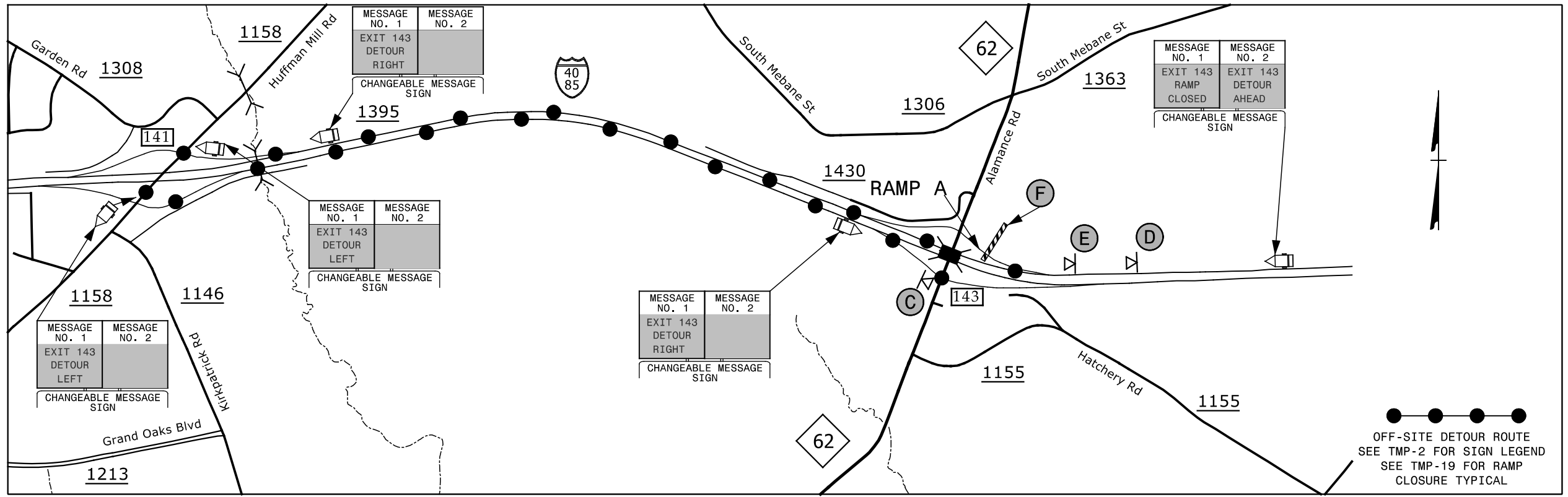
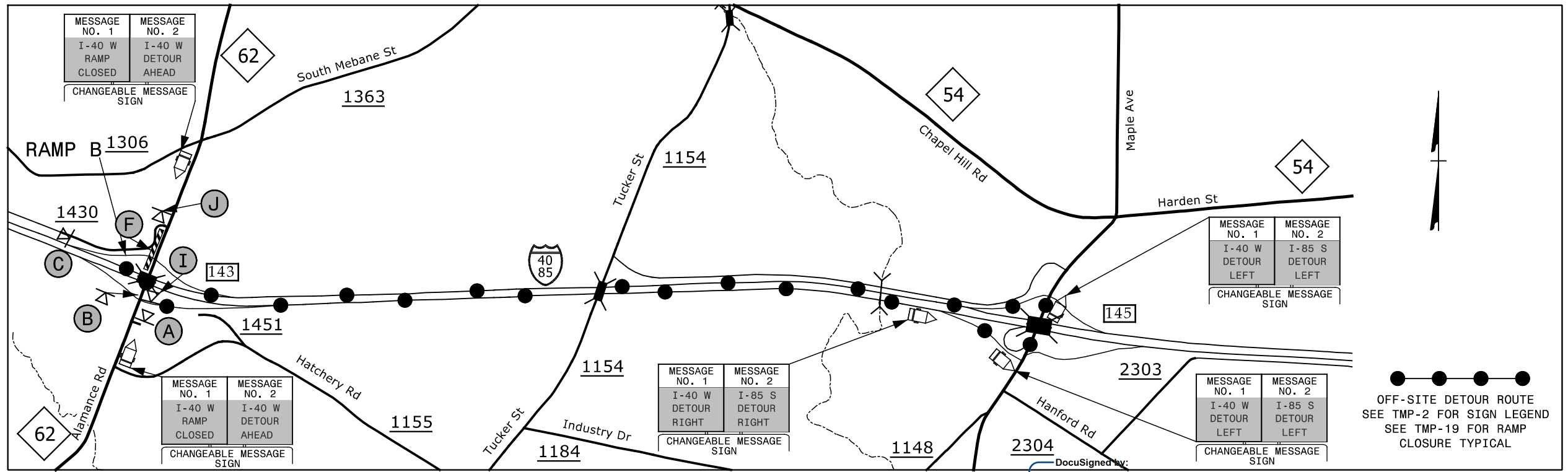


EXIT 143 RAMP A - I-40/I-85



EXIT 143 RAMP B - I-40/I-85



12/1/2015 12:07:00 PM G:\Tr\aff\tr\I5.022.00 I-5309 & I-5836 TMP\TMP-I-5309_5836 TMP-8.dgn

<p>1025 Wade Avenue Raleigh, NC 27605 Tel: 919-789-9977 Fax: 919-789-9591 License: C-2197</p>	<p>APPROVED: <i>Steve Miller</i></p> <p>DATE: 12/7/2015</p> <p>SEAL</p>			<h2>EXIT 143 ALAMANACE ROAD DETOUR</h2>
	<p>DOCUMENT NOT CONSIDERED FINAL UNLESS ALL SIGNATURES COMPLETED</p>			