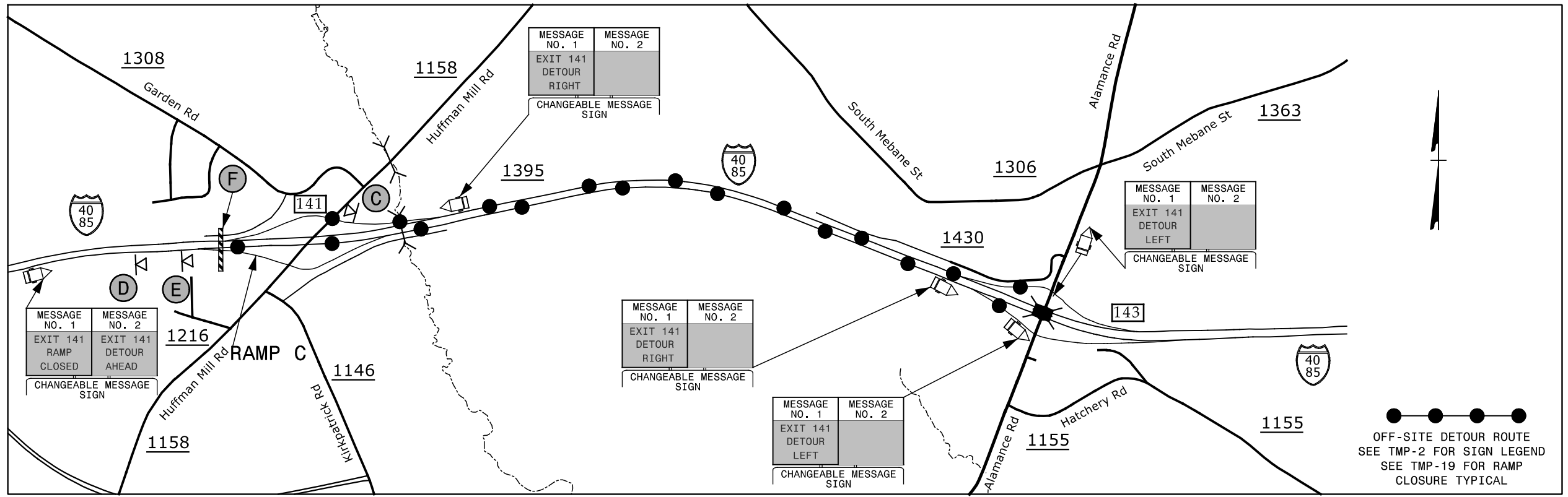
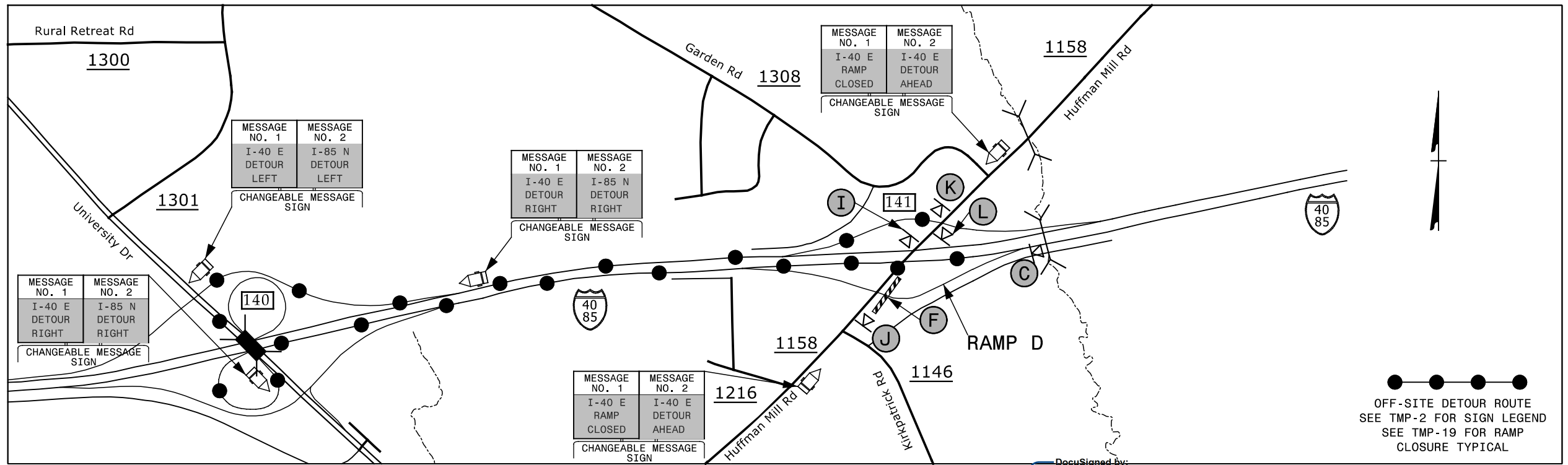


### EXIT 141 RAMP C - I-40/I-85



### EXIT 141 RAMP D - I-40/I-85



12/7/2015 10:51:15 AM G:\Traffic\I-5309 & I-5836 TMP\TMP-I-5309\_5836 TMP-7.dgn

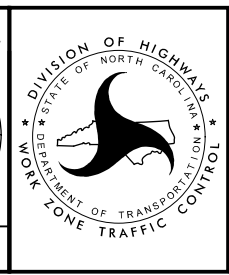
**SEPI**  
ENGINEERING & CONSTRUCTION

1025 Wade Avenue  
Raleigh, NC 27605  
Tel: 919-789-9977  
Fax: 919-789-9591  
License: C-2197

APPROVED: *Steve Miller*  
DATE: 12/7/2015

SEAL

DOCUMENT NOT CONSIDERED FINAL  
UNLESS ALL SIGNATURES COMPLETED



**EXIT 141  
HUFFMAN MILL ROAD  
DETOUR**

