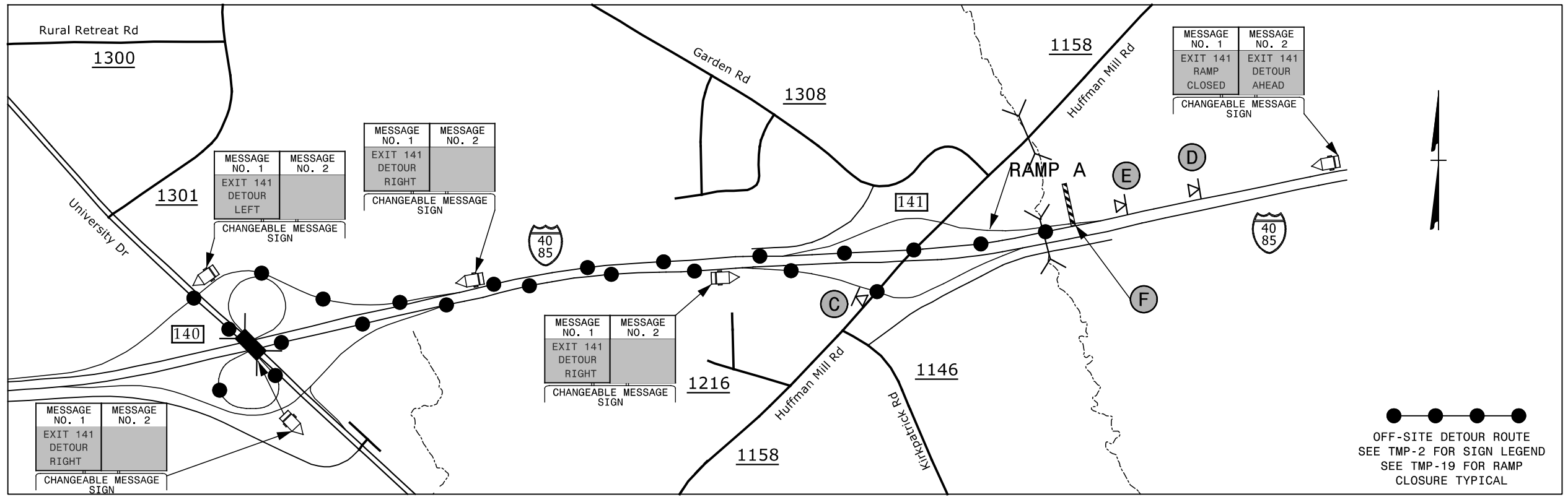
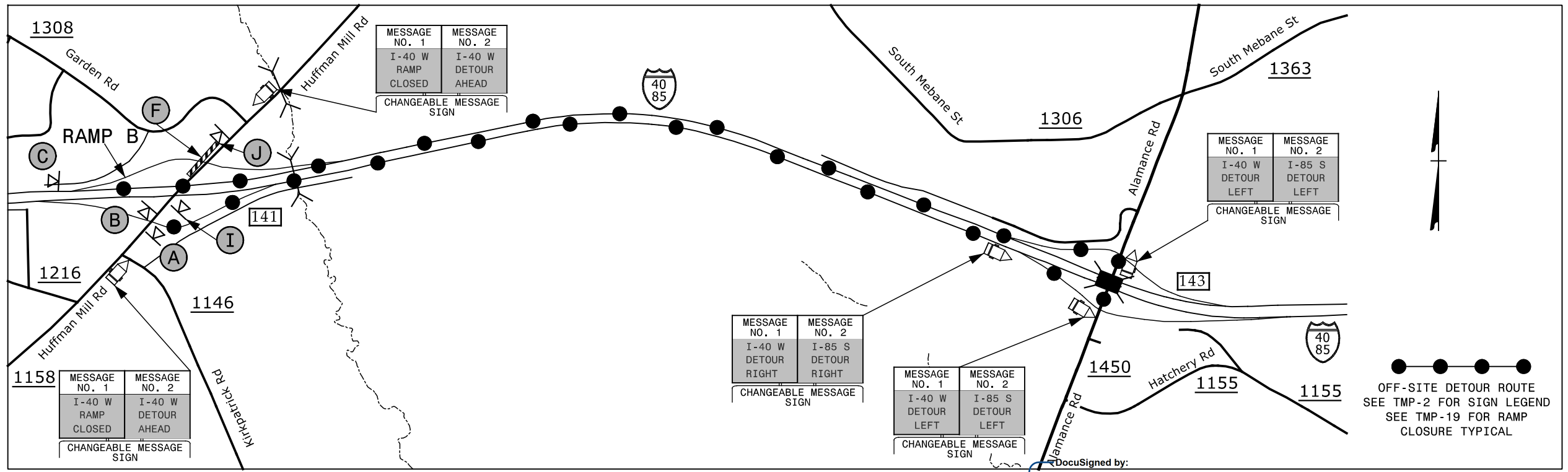


EXIT 141 RAMP A - I-40/I-85



EXIT 141 RAMP B - I-40/I-85



12/17/2015 12:07:00 PM G:\Tr\aff\tr\I5.022.00 I-5309 & I-5836 TMP\TMP-I-5309_5836 TMP-6.dgn

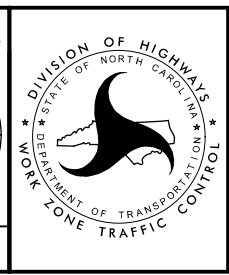
SEPI
ENGINEERING & CONSTRUCTION

1025 Wade Avenue
Raleigh, NC 27605
Tel: 919-789-9977
Fax: 919-789-9591
License: C-2197

APPROVED: *Steve Miller*
DATE: 12/7/2015

SEAL

DOCUMENT NOT CONSIDERED FINAL
UNLESS ALL SIGNATURES COMPLETED



**EXIT 141
HUFFMAN MILL ROAD
DETOUR**