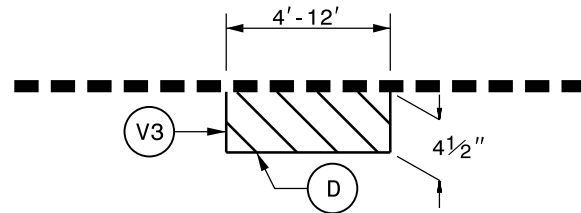


TYPICAL SECTION NO. 3

TO BE USED ON MAPS 2 THRU 11, 13 THRU 21, 23 THRU 26, 28 THRU 32

- *NOTE: TYPICAL SECTION CONSTRUCTION SEQUENCE:
1. MILL TRAVEL LANES 1½" AND FILL WITH 1½" SURFACE COURSE, TYPE S9.5C
 2. OVERLAY SHOULDERS WITH FOG SEAL

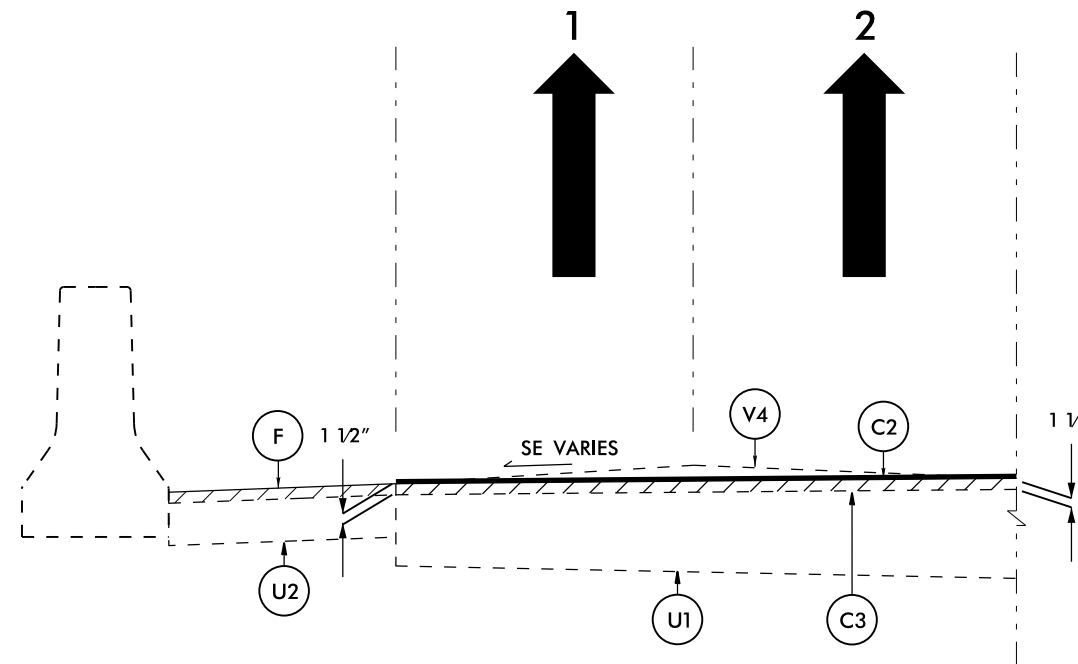
PATCHING DETAIL 1



MILL EXISTING ASPHALT PAVEMENT 4½" IN DEPTH AND FILL WITH INTERMEDIATE COURSE, TYPE I19.0B AT LOCATIONS AS DIRECTED BY THE ENGINEER.

TO BE USED IN CONJUNCTION WITH MAPS 1 AND 12

MILLING DETAIL 2



NOTE: LANES 1 & 2 SHALL BE MILLED AT THE SAME TIME. MILLED DEPTH SHALL BE 1½" ON LEFT SIDE OF LANE 1 AND ON RIGHT SIDE OF LANE 2. A STRINGLINE SHALL BE USED TO DETERMINE MILLING DEPTH ACROSS LANES 1 & 2.

NOTE: TO BE USED FROM APPROX. STA. 180+60.00 EB/NB AT THE EASTERN APPROACH OF BRIDGE FOR ALAMANCE RD/NC 62 NORTH TO APPROX. STA. 227+38 EB/NB (SR 1154 (TUCKER ST.))

PAVEMENT SCHEDULE

C1	PROP. APPROX. 2" ASPHALT CONCRETE SURFACE COURSE, TYPE S9.5D, AT AN AVERAGE RATE OF 224 LBS. PER SQ. YD.		
C2	PROP. APPROX. ¾" OPEN-GRADED ASPHALT FRICTION COURSE, TYPE FC-2 MODIFIED, AT AN AVERAGE RATE OF 90 LBS PER SQ. YD.		
C3	PROP. APPROX. 1½" ASPHALT CONCRETE SURFACE COURSE, TYPE S9.5D, AT AN AVERAGE RATE OF 168 LBS. PER SQ. YD.		
C4	PROP. APPROX. 1½" ASPHALT CONCRETE SURFACE COURSE, TYPE S9.5C, AT AN AVERAGE RATE OF 168 LBS. PER SQ. YD.		
D	PROP. APPROX. 4½" ASPHALT CONCRETE INTERMEDIATE COURSE, TYPE I19.0B, AT AN AVERAGE RATE OF 513 LBS. PER SQ. YD.		
F	PROPOSED FOG SEAL TO BE APPLIED TO THE EXISTING SHOULDER		
U1	EXISTING TRAVELWAY.	U2	EXISTING PAVED SHOULDER.
T	EARTH MATERIAL		

MILLING SCHEDULE

V1	MILLING ASPHALT PAVEMENT. 2" DEPTH.
V2	MILLING ASPHALT PAVEMENT 1½" DEPTH
V3	MILLING ASPHALT PAVEMENT 4½" DEPTH
V4	MILLING ASPHALT PAVEMENT 1½" TO 4"