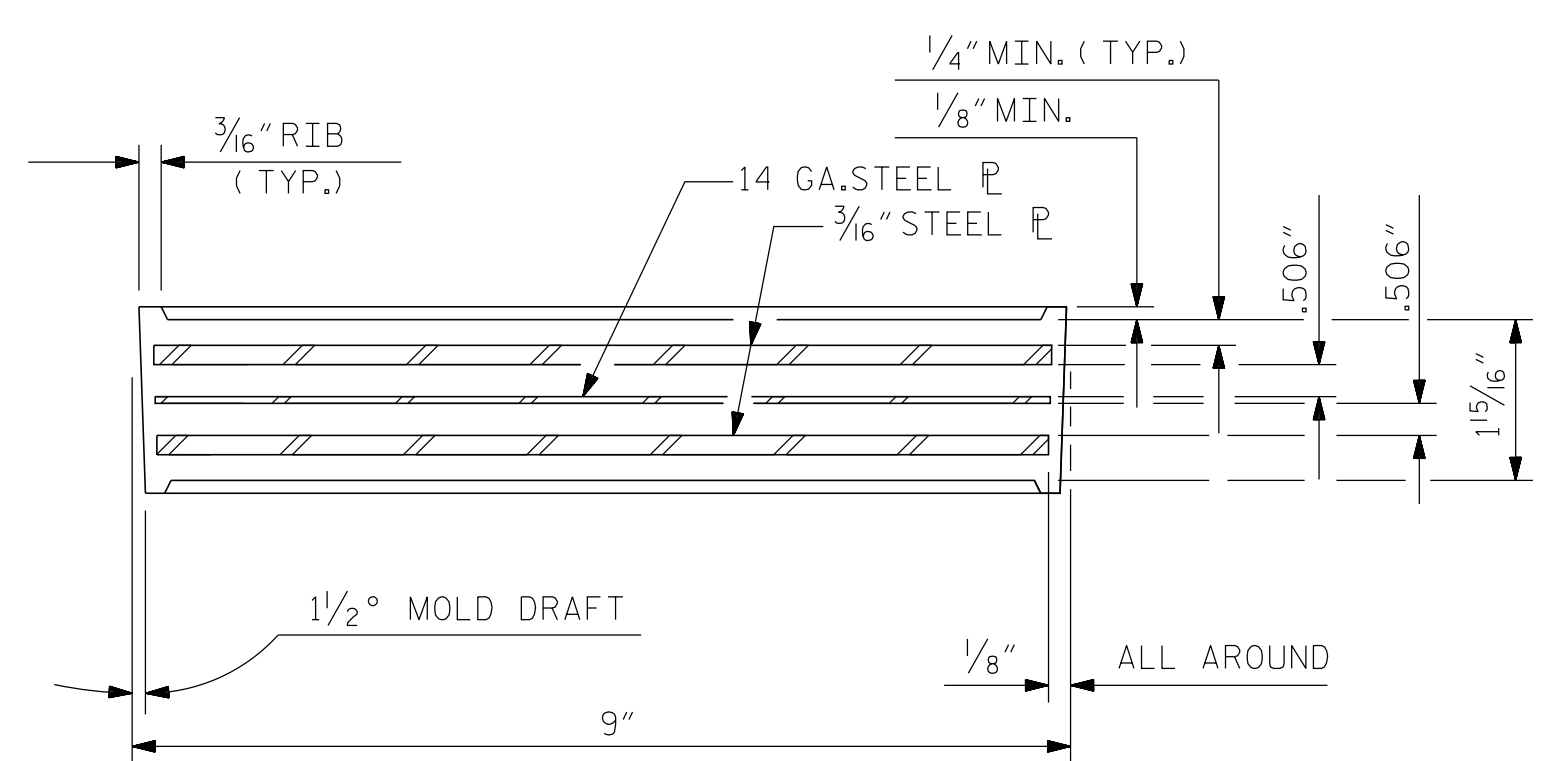
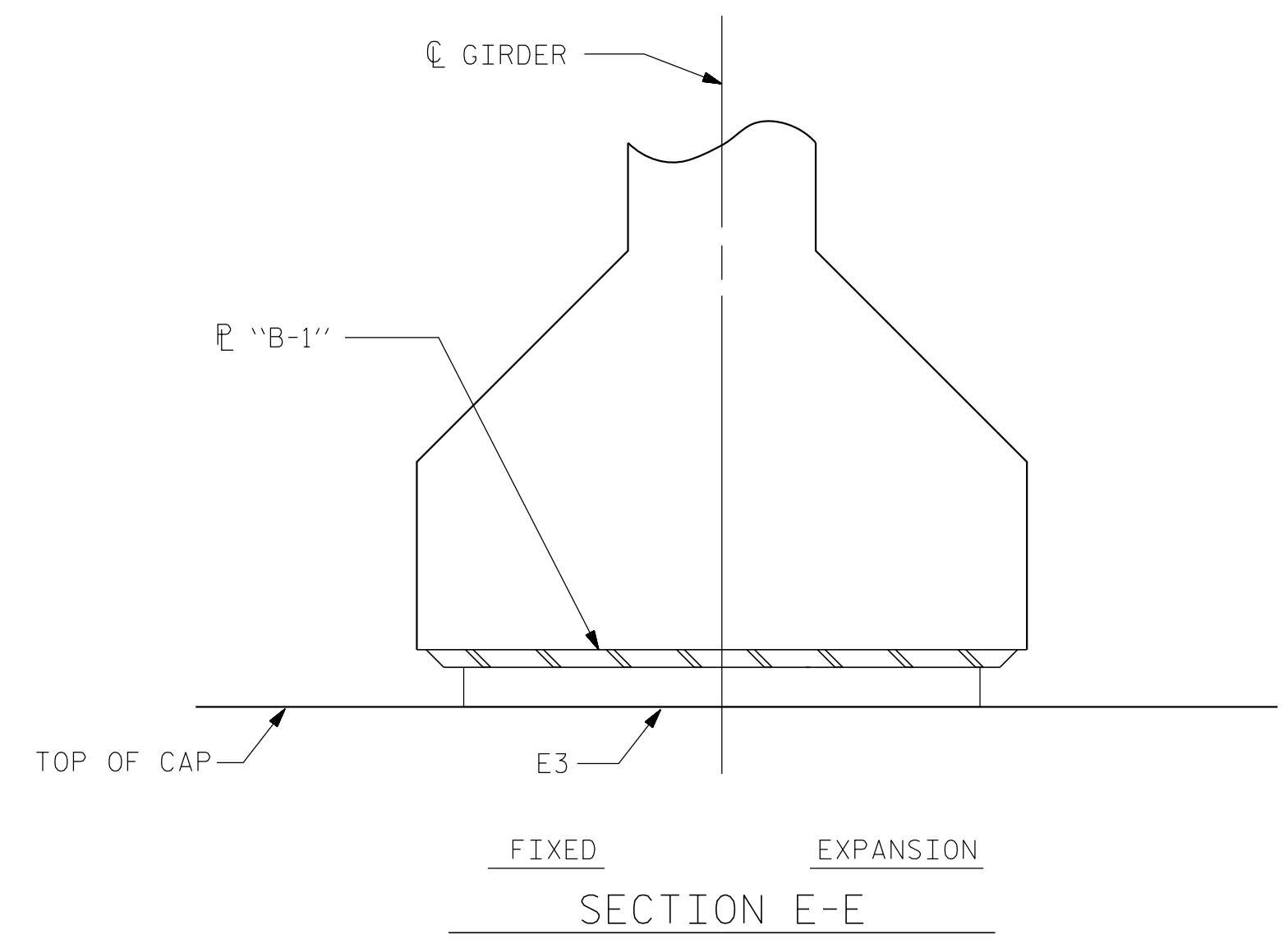
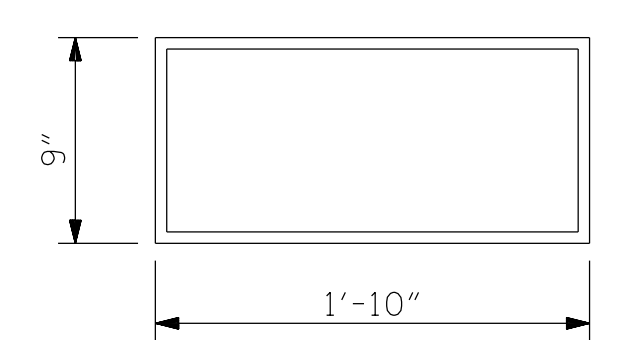


NOTES

ALL SURFACES OF BEARING PLATES SHALL BE SMOOTH AND STRAIGHT.  
 THE ELASTOMER IN THE STEEL REINFORCED BEARINGS SHALL HAVE A SHEAR MODULUS OF 0.160 KSI, IN ACCORDANCE WITH AASHTO M251.  
 FOR STEEL REINFORCED ELASTOMERIC BEARINGS, SEE SPECIAL PROVISIONS.



TYPICAL SECTION OF ELASTOMERIC BEARINGS



E3 (20 REQ'D )  
 PLAN VIEW OF ELASTOMERIC BEARING  
 TYPE IV

MAXIMUM ALLOWABLE SERVICE LOADS	
D.L.+L.L. (NO IMPACT)	
TYPE II	145 k
TYPE III	205 k
TYPE IV	225 k

PROJECT NO. R-5605  
TRANSYLVANIA COUNTY  
 STATION: 50+83.00 -L-

STATE OF NORTH CAROLINA  
 DEPARTMENT OF TRANSPORTATION  
 RALEIGH  
 STANDARD  
 ELASTOMERIC BEARING  
 DETAILS  
 PRESTRESSED CONCRETE GIRDER  
 SUPERSTRUCTURE

ASSEMBLED BY : PFC	DATE : 8/15
CHECKED BY : CMT	DATE : 8/15
DRAWN BY : WJH 8/89	REV. 10/1/11 MAA/OM
CHECKED BY : CRK 8/89	REV. 6/13 AAC/MAA
	REV. 1/15 MAA/TMG

Prepared in the Office of:  
  
**Mattern & Craig**  
 CONSULTING ENGINEERS • SURVEYORS  
 FIRM LICENSE No. C-1154  
 12 BROAD STREET  
 ASHEVILLE, NORTH CAROLINA 28801  
 (828) 254-2201 • FAX (828) 254-4562

REVISIONS						SHEET NO.
NO.	BY:	DATE:	NO.	BY:	DATE:	TOTAL SHEETS
1			3			51
2			4			51

\*\*\*\*\*SYTIME\*\*\*\*\*  
 \*\*\*\*\*DCNS\*\*\*\*\*  
 \*\*\*\*\*USERNAME\*\*\*\*\*