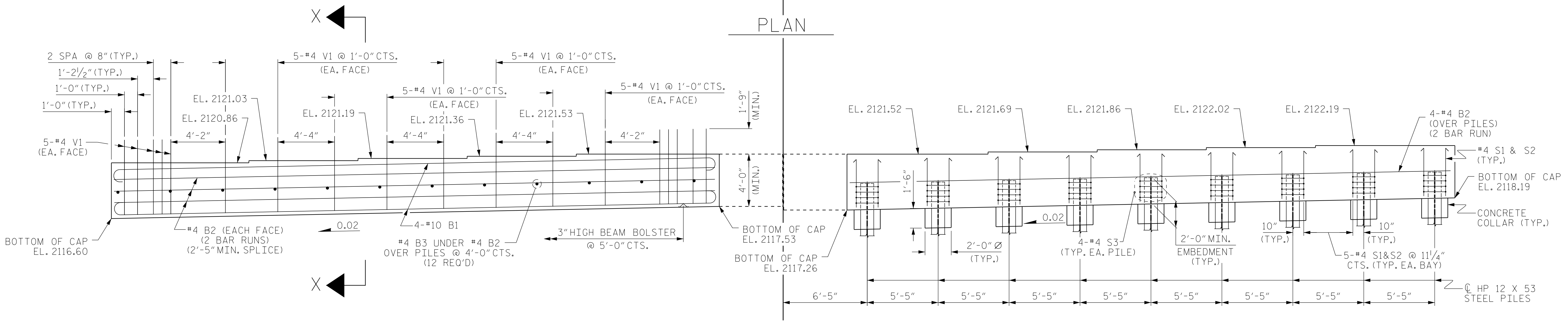


PLAN



WESTBOUND LANE
DETAILS SHOWN ARE TYPICAL FOR BOTH DIRECTIONS OF TRAFFIC

EASTBOUND LANE
DETAILS SHOWN ARE TYPICAL FOR BOTH DIRECTIONS OF TRAFFIC

ELEVATION

FOR WINGS, SEE SHEET 3 OF 4.
FOR SECTION X-X, SEE SHEET 4 OF 4.
CONCRETE COLLARS AND STEEL PILES NOT SHOWN IN PLAN VIEWS FOR CLARITY.
SEE "CORROSION PROTECTION FOR STEEL PILES DETAIL", SHEET 4 OF 4.

NOTES

- STIRRUPS IN CAP MAY BE SHIFTED AS NECESSARY TO CLEAR V1 BARS.
- FOR PILE SPLICE DETAILS, SEE SHEET 4 OF 4.
- FOR WING DETAILS, SEE SHEET 3 OF 4.
- THE TOP OF THE END BENT CAP, EXCEPT THE BEARING AREA, SHALL BE RAKED TO A DEPTH OF 1/4".

DRAWN BY : PEC DATE : 8/15
CHECKED BY : CMT DATE : 8/15

*****SYSTEM*****
*****DCN*****
*****USERNAME*****

Prepared in the Office of:
Mattern & Craig
CONSULTING ENGINEERS & SURVEYORS
FIRM LICENSE NO. C-1154
12 BROAD STREET
ASHEVILLE, NORTH CAROLINA 28801
(828) 254-2201 - FAX (828) 254-4582

DocuSigned by:
Steven A. Campbell 12/21/2015

PROJECT NO. R-5605
TRANSYLVANIA COUNTY
STATION: 36+73.00 -L-

SHEET 2 OF 4

STATE OF NORTH CAROLINA
DEPARTMENT OF TRANSPORTATION
RALEIGH

SUBSTRUCTURE
END BENT No. 2
(INTEGRAL)

| REVISIONS | | | | | | SHEET NO. |
|-----------|-----|-------|-----|-----|-------|--------------|
| NO. | BY: | DATE: | NO. | BY: | DATE: | S-20 |
| 1 | | | 3 | | | TOTAL SHEETS |
| 2 | | | 4 | | | 51 |