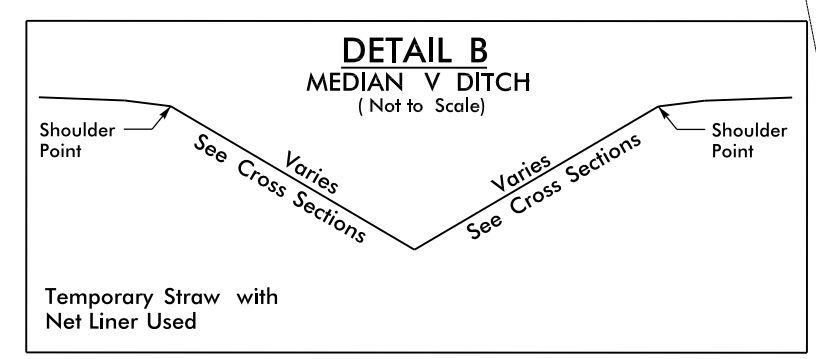


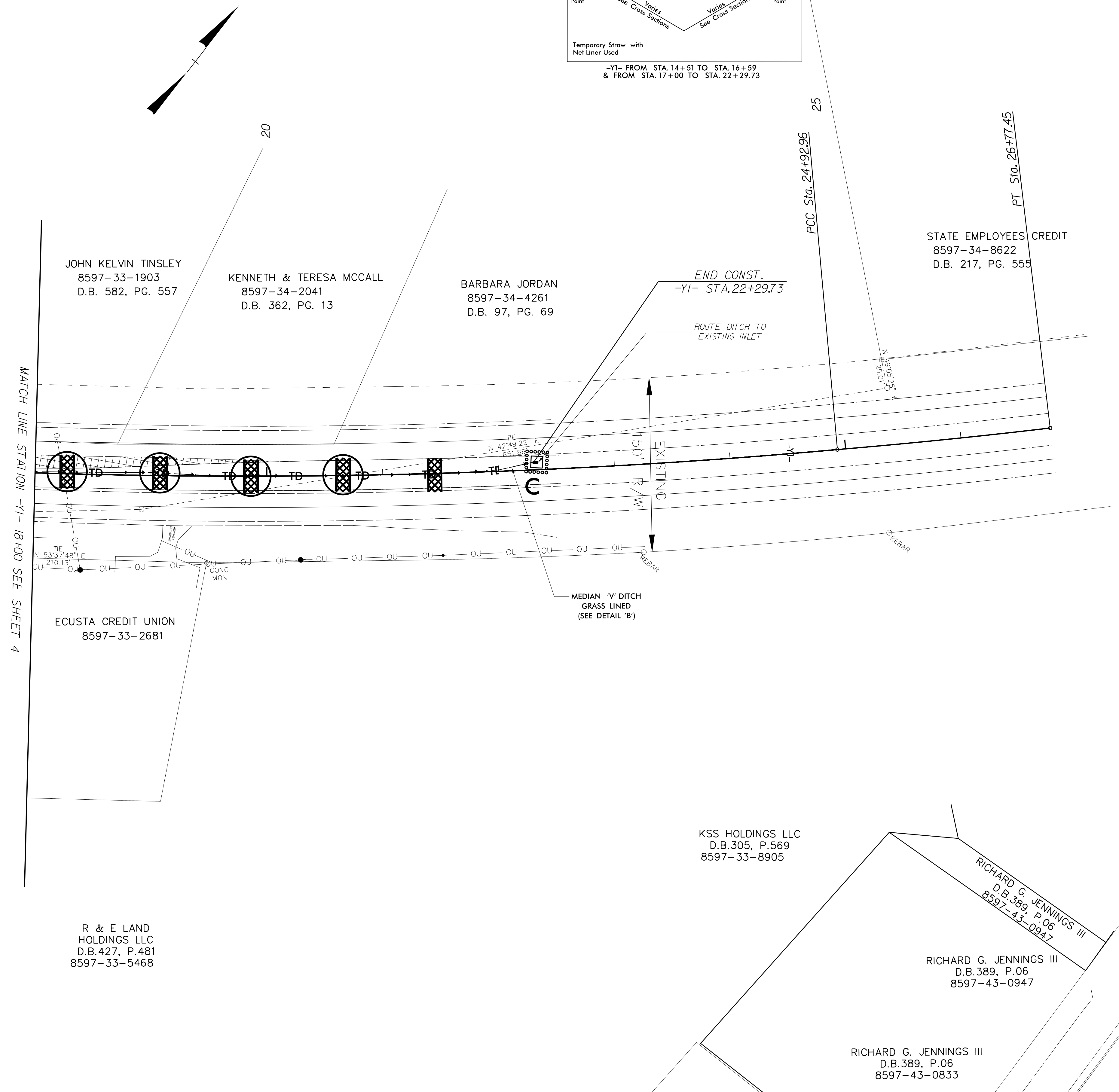
PROJECT REFERENCE NO. <i>R-5605</i>	SHEET NO. <i>EC-13/CONST.B</i>
RW SHEET NO.	
ROADWAY DESIGN ENGINEER	HYDRAULICS ENGINEER




-YI- FROM STA. 14+51 TO STA. 16+59
& FROM STA. 17+00 TO STA. 22+29.73

NOTES: ANY DEVIATION FROM OPTIONS GIVEN WILL REQUIRE PRIOR APPROVAL BY ENGINEER.

ADDITIONAL EROSION CONTROL DEVICES MAY NEED TO BE INSTALLED AS DIRECTED BY THE ENGINEER.



PLANS PREPARED BY :



WGLA Engineering, PLLC

214 N. King Street
Hendersonville, NC 28792
(828) 687-7177
wglac.com

FOR
DIVISION OF HIGHWAYS