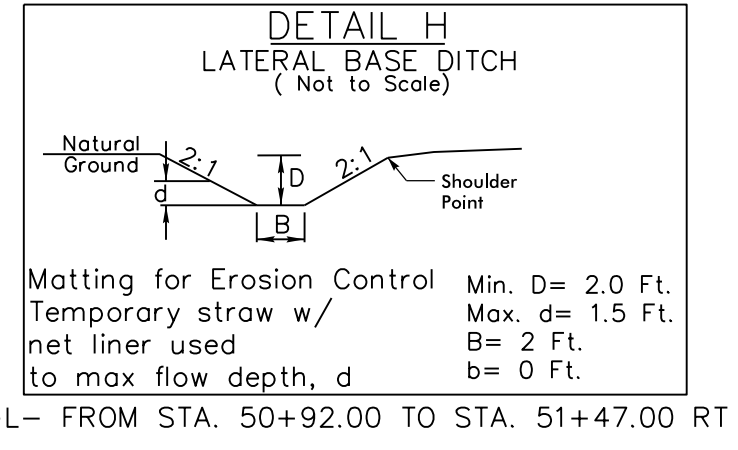
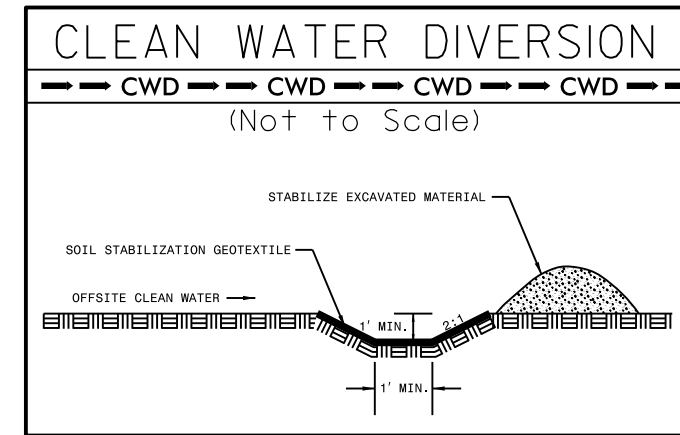
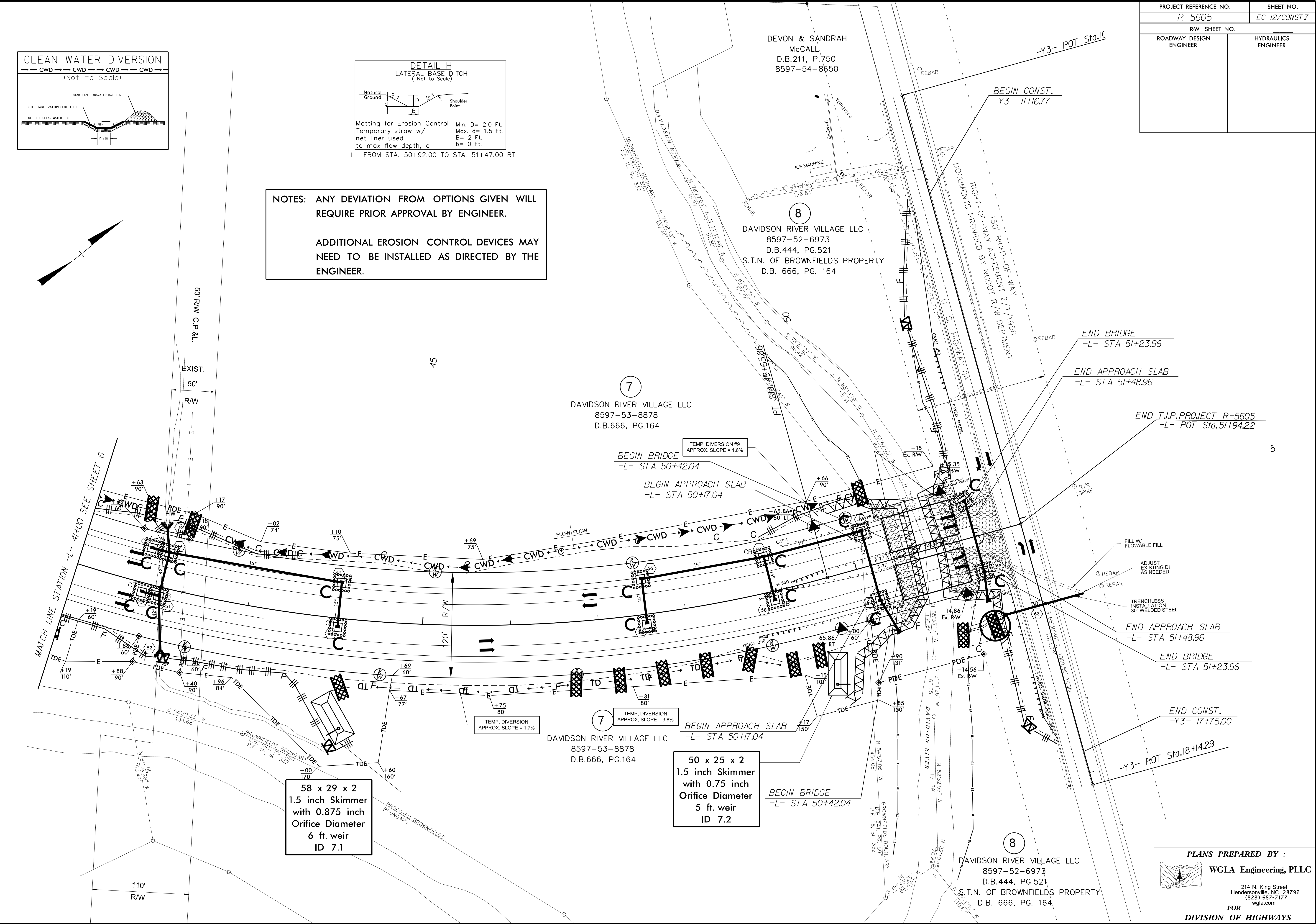
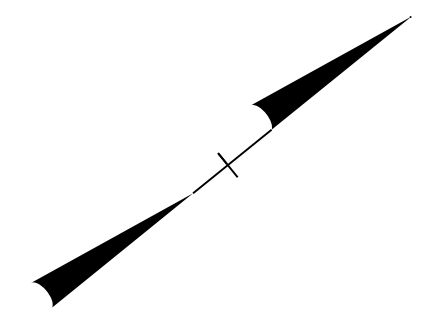


PROJECT REFERENCE NO. R-5605	SHEET NO. EC-12/CONST.7
RW SHEET NO.	
ROADWAY DESIGN ENGINEER	HYDRAULICS ENGINEER



NOTES: ANY DEVIATION FROM OPTIONS GIVEN WILL REQUIRE PRIOR APPROVAL BY ENGINEER.

ADDITIONAL EROSION CONTROL DEVICES MAY NEED TO BE INSTALLED AS DIRECTED BY THE ENGINEER.



PLANS PREPARED BY :

WGLA Engineering, PLLC

214 N. King Street
Hendersonville, NC 28792
(828) 687-7177
wglac.com

FOR
DIVISION OF HIGHWAYS